



Kodak

i1800 Series Scanners

High-Resolution Printer Accessory

Contents

Using the High-Resolution Printer Accessory	1
Printed Information.	1
Configuring your print string	3
Changing the horizontal print position	5
Changing the vertical print position	7
Omit printing on more than one document.	8
Performing a Print test	9
Installing a new printer cartridge	10
Storing the printer cartridge when not in use	12
Scanner maintenance guidelines when using the High-Resolution Printer	14
Replacement procedures	14
Replacing ink trays.	14
Scanner auto purging.	16
Printer cartridge care	16
Cleaning the print head	17
Troubleshooting	18

Using the High-Resolution Printer Accessory / for *Kodak* i1800 Series Scanners

A-61591
Part No. 9E8651
January 2008

This guide provides instructions for using the High-Resolution Printer Accessory / for the *Kodak* i1800 Series Scanners.

The High-Resolution Printer Accessory provides an effective way to apply information to the scanned document and use document management systems such as batching and time-stamping. It also provides a print capability that is programmed to support alphanumeric characters as defined by the application software. All print information is captured in a document header record. All printer controls and functions are accessible via the ISIS Driver and TWAIN Datasource.

Some features of the High-Resolution Printer Accessory are:

- Prints up to 40 characters per page, front pre-scan only
- Improved print quality
- A choice of red or black printer cartridges
- Auto purge
- Adjustable print contrast (via font selection: 50% Normal; 100% Bold)

Printed information

The information printed by the High-Resolution Printer Accessory is defined by the application software. Up to 40 characters per document can be printed. Printed information can include:

- Document image address
- Date
- Time
- Document sequential counter
- Custom message text

The same information may be printed on documents of all levels, or different information may be printed on documents of different levels. The orientation/rotation, format and style/font can all be selected.

Orientation/Rotation — you can select the orientation of the print string. Options are **0**, **90**, **180** or **270** degrees.

Style/Font — the Contrast of the print string can be adjusted. You can select **Normal** (50%) or **Bold/Large** (100%).

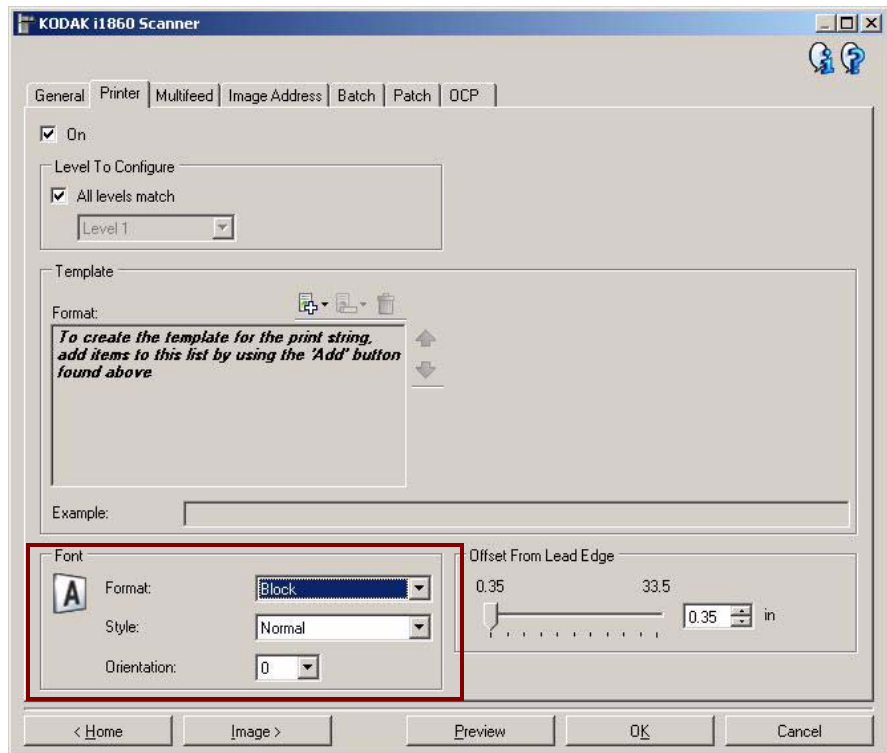
Configuring your print string

Configuring your High-Resolution Printer is done via the TWAIN Datasource or ISIS Driver. Detailed procedures for configuring print strings can be found in the *Image Processing Guide for Kodak i1800 Series Scanners*, A-61580.

NOTE: When using the High-Resolution Printer in a scanner with image address and patch reading enabled, all patches must be within 2.5 inches of the lead edge.

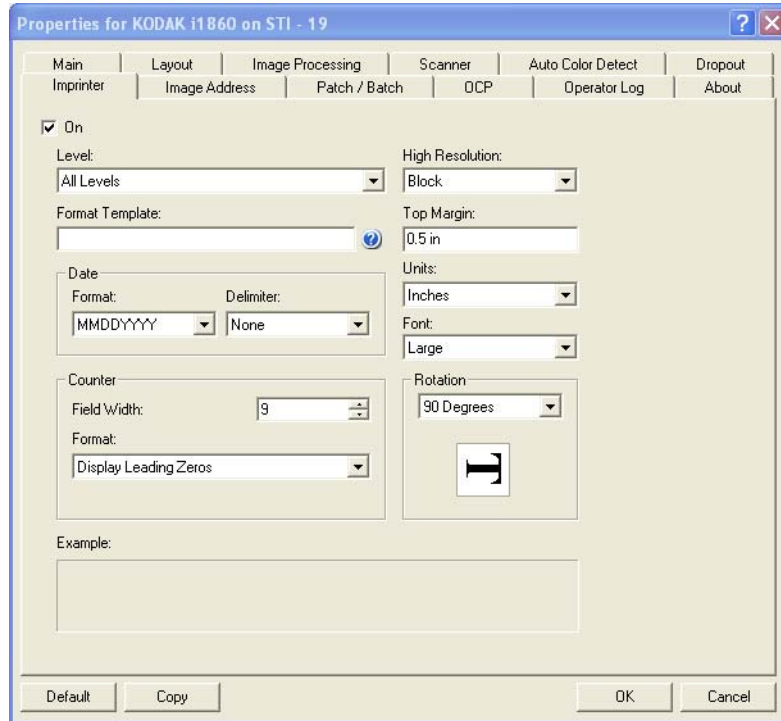
When using the High-Resolution Printer, you must decide whether to use single- or multi-character printing.

If your application software uses the TWAIN Datasource, access the Printer tab to define single- or multi-character printing.



Format — select either **Normal** (single-character) or **Block** (multi-character) format.

If your application software uses the ISIS Driver, access the Printer tab and select **Block** or **Normal** mode.

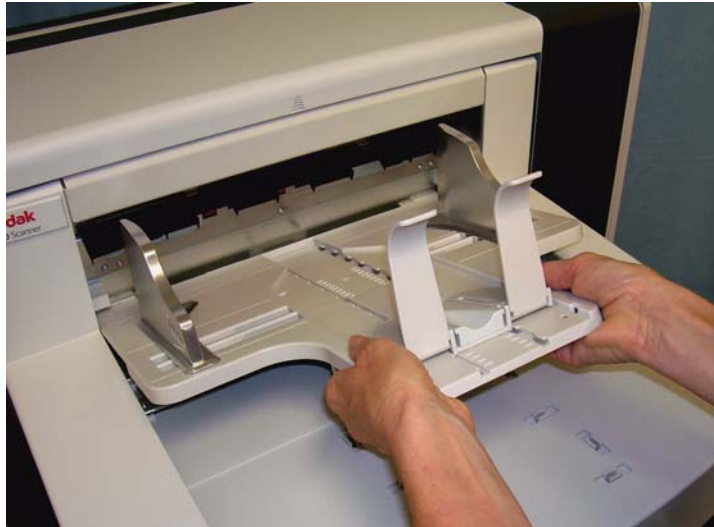


Changing the horizontal print position

The location of the information you want to print on a document is determined by the print position of the High-Resolution Printer Accessory within the scanner and the pre-defined print position.

To change the horizontal print position:

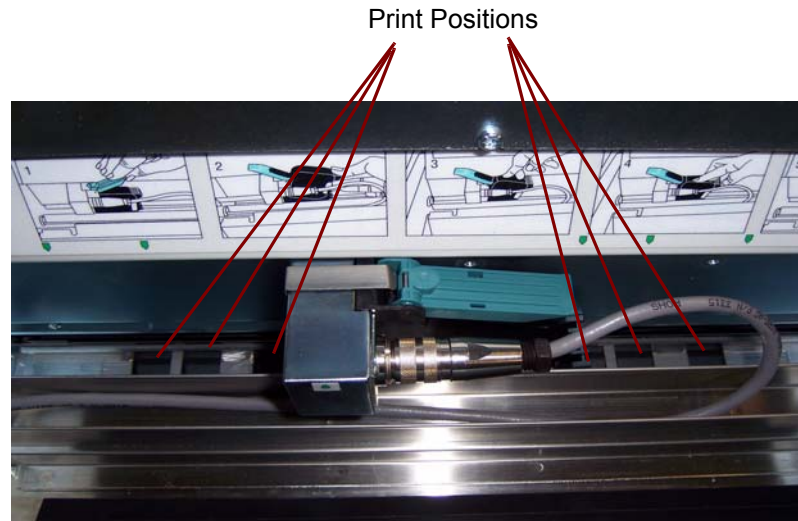
1. Remove the output tray.



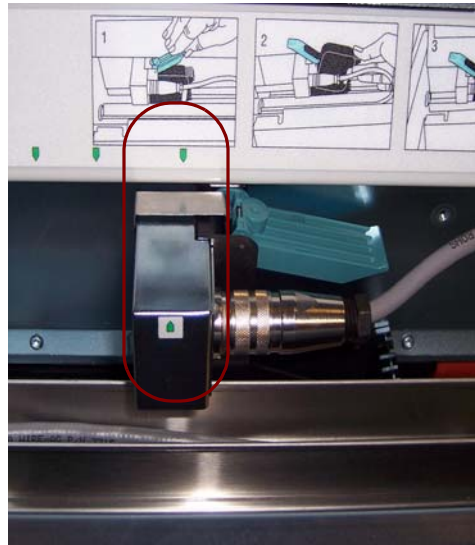
2. Open the print access cover.



There are 6 horizontal print positions. These positions are visible on the printer rail.



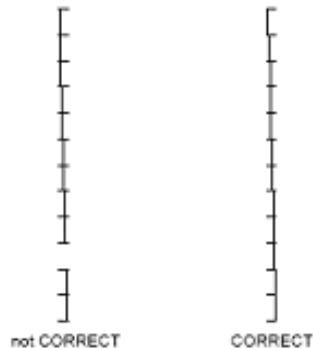
3. Slide the printer along the print rail until it is in the desired position. The arrow on the printer cartridge carrier should be aligned with the desired print position.



4. When finished, close the print access cover and reinstall the output tray.

Changing the vertical print position

The Print Test function allows you to print a “ladder” target where each vertical line is printed by one of the jets in the print head. If a line is missing, one of the jets is not working. Dabbing the print head with a Staticide wipe will often open clogged jets.



Omit printing on next document only

If you need to rescan a document(s) and want to avoid a duplicate print string on the same document, use the Omit Print option.

You can omit printing on the next document by selecting the **Omit Print** option on the scanner touchscreen. You must select **Omit Print** before feeding any document that you want to eliminate printing on.

NOTE: This example assumes that the application software has defined the *Omit Print* function.



Omit printing on more than one document

The Disable Print function allows you to temporarily disable printing on all documents in a batch. This may be useful if rescanning a stack of documents that have already been printed.

The Disable Print function is only available after the scanner is enabled (scanning started from the host PC). If you want to disable printing for the first document in the batch, then your host software should be set up to NOT automatically start scanning.

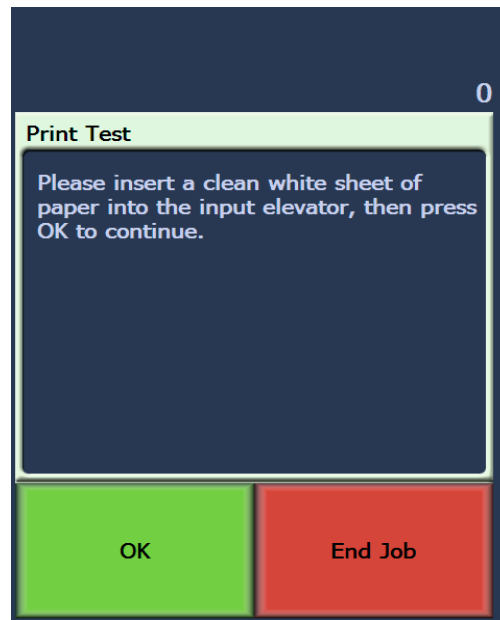
The **Disable Print** button is only available if printing has been enabled by the scanning application. Once **Disable Print** is turned on, no documents will be printed on until one of the following occurs:

- **Disable Print** is turned off, or
- the scanner is disabled because there are no more documents to scan (End Job) or a multifeed occurs and the scanner is set up via the Stop Scanning option on jam.

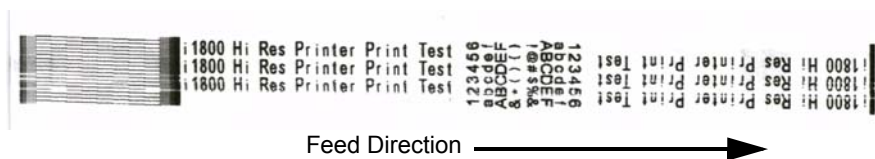
Performing a Print test

The print test checks to be sure the print head in the High-Resolution Printer is working properly.

1. Touch **Print Test**. The Print Test screen will be displayed.



2. Place a blank sheet(s) of paper in the input elevator.
3. Touch **OK**. The document(s) in the output tray will display the results of the print test.



4. Remove the document(s) from the output tray and evaluate the appearance of the test pattern.
 - If the pattern is complete, you are ready to begin.
 - If the pattern is not legible:
 - Check to see that the printer cartridge is installed properly. Repeat the print test.
 - If the pattern is still not legible, clean the print head on the printer cartridge.
 - If the pattern is still not legible, replace the printer cartridge.

See the section entitled, “Troubleshooting” later in the manual for more information.

Installing a new printer cartridge

Replace the printer cartridge when:

- printed characters appear light or uneven
- missing characters are evident
- a print test reveals inconsistent character quality
- cleaning has not improved the overall print quality

1. Remove the output tray.



2. Open the print access cover.



3. Lift the blue tab up to release the printer cartridge.



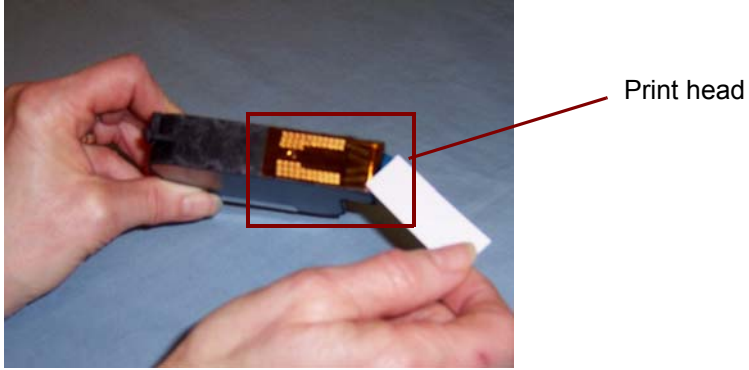
4. Lift the printer cartridge out from the printer carrier.



IMPORTANT: Dispose the empty printer cartridge in accordance with all federal, state and local laws.

5. Open the new printer cartridge package and remove it from the package.

6. Remove the protective tape from the bottom of the printer cartridge to expose the print head.



NOTE: The photo above is for illustrative purposes only. When removing the tape from the printer cartridge the print head should be facing down.

7. Place the new printer cartridge in the printer carrier and snap it into place.
8. Close the blue tab to hold the printer cartridge securely in place.
9. Close the print access cover and replace the output tray.
10. Run a print test.

Storing the printer cartridge when not in use

The maintenance station is provided to store your printer cartridge when the High-Resolution Printer is not in use. Proper printer cartridge storage is important for prolonging the life of the printer cartridge and to keep it from drying out.

NOTE: The maintenance station can be mounted on the scanner for easy use and access.

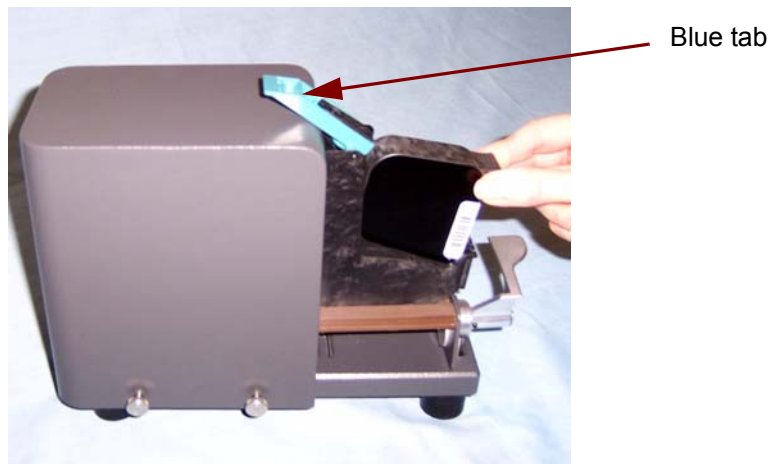


1. Remove the printer cartridge from the scanner. See the procedures in the section entitled, "Installing a new printer cartridge".

2. Rotate the release lever on the maintenance station and pull out the carrier.



3. Lift the blue tab on the carrier.
4. Insert the printer cartridge in the maintenance station as shown.



5. Close the blue tab and slide the carrier back into the maintenance station.
6. Rotate and latch the release lever.

Scanner maintenance guidelines when using the High-Resolution Printer

Depending on printing needs, more frequent cleaning of the scanner may be required. In addition, ink trays need to be replaced periodically.

Refer to the User's Guide for the *Kodak i1800 Series Scanners*, A-61555 for detailed scanner cleaning and maintenance procedures.

Replacement procedures

The following supplies can be obtained from your scanner supplier.

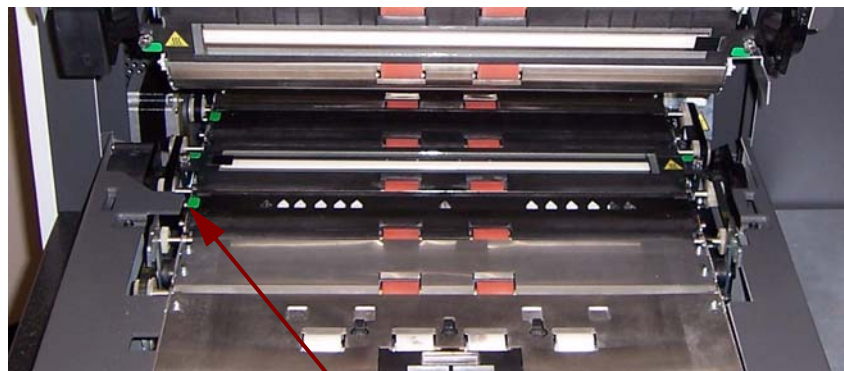
Supplies/Consumables	CAT No.
High-Resolution Printer Maintenance Kit for <i>Kodak i1800 Series Scanners</i>	877 6254
High-Resolution Printer Black Printer Cartridge for <i>Kodak i1800 Series Scanners</i> and <i>Kodak Imagemark Microimager 70</i>	822 1376
High-Resolution Printer Red Printer Cartridge for <i>Kodak i1800 Series Scanners</i> and <i>Kodak Imagemark Microimager 70</i>	145 6532

NOTE: Material Safety Data Sheets (MSDS) for chemical products are available on the Kodak website at: www.kodak.co/gomsgds. When accessing the MSDSs from the website, you will be required to provide the catalog number of the consumable you want the Material Safety Data Sheet for.

Replacing ink trays

The ink trays collect ink overflow. They should be replaced when there is a build-up of ink. A Maintenance Kit may be purchased through your supplier.

1. Open the pod.
2. Use the green tab to lift and remove the blotter strip cover to access the ink trays.



Remove Blotter Strip cover

3. Remove the soiled ink tray. You can replace one or both of the trays as necessary.



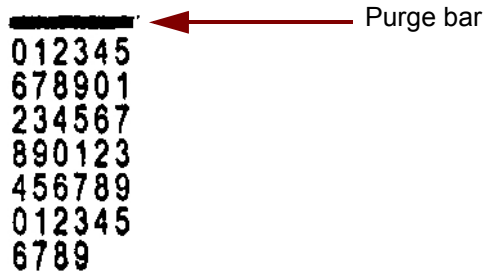
4. Discard the soiled ink tray(s).
5. Insert the new ink tray.



6. Replace the blotter strip cover.
7. Close the pod.

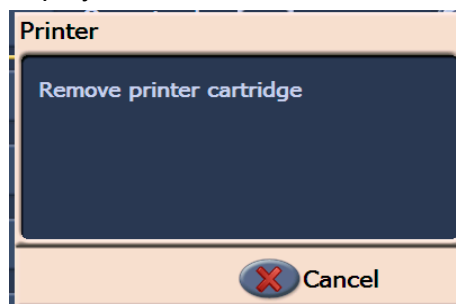
Scanner auto purging

In order to maintain ink flow and prevent cartridges from drying out, the scanner will automatically purge the printer cartridge. Purging is a process that forces a small amount of ink out of the print head. This ink is deposited in the ink trays or when documents are going through the transport, each document that gets printed on will have a purge bar.



If you are not printing frequently enough, purging will occur on a predetermined time interval. When the scanner determines that a purge is required and no paper is going through the transport, it will purge into the ink tray at the set interval.

When no documents are in the transport, the scanner will periodically auto purge for 3 minutes. After 3 minutes the following message will be displayed on the touchscreen, **Remove printer cartridge**.



- If you are finished using the High-Resolution Printer, remove the printer cartridge and place it in the maintenance station.

Printer cartridge care

For best results, follow these printer cartridge guidelines:

- Keep printer cartridges sealed in the original package until they are needed.
- Store the printer cartridges in an upright position.
- Do not remove protective tape until you are ready to install a new cartridge. Do not reapply the tape after it has been removed.
- Store the printer cartridges at room temperature (60 to 78°F).
- After removing the protective tape, avoid touching the print head nozzle.
- Store the printer cartridge in the maintenance station when you are not printing.

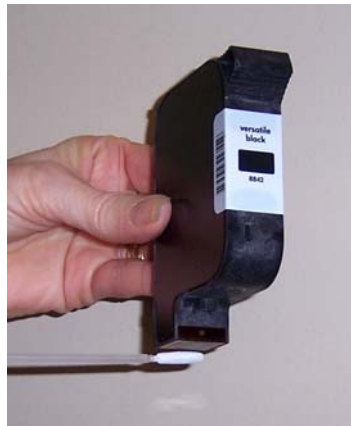
Cleaning the print head

The print head is the part of the printer cartridge which dispenses ink to the document. If the "Printer Cartridge Care" guidelines are not followed, ink can dry on the print head which could cause poor print quality.

Cleaning the print head may remove the dried ink and improve print quality. If cleaning does not produce satisfactory results, replace the printer cartridge.

To clean the print head:

1. Remove the printer cartridge from the carrier.
2. Hold the printer cartridge with the print head facing down.
3. Using a damp swab, dab (do not wipe) the print head. Continue to dab at the print head until a small amount of ink is transferred to the swab. Do not apply excessive force as it could scratch the nozzle area.



NOTE: If ink does not get transferred to the swab, replace the printer cartridge.

IMPORTANT: To avoid getting ink on your hands and clothing, use the recommended printing supplies.

Troubleshooting

Use the chart below as a guide to check possible solutions to problems you may encounter when using the High-Resolution Printer Accessory.

Problem	Possible Solution
Print quality is poor or inconsistent	Check the following: <ul style="list-style-type: none">• Be sure the printer cartridge is not empty.• Be sure the printer cartridge is properly installed.• Be sure the printer cartridge is in the correct position for printing.• Verify that the printer has been enabled in the application software and that the expected print string has been specified.• Run a print test to verify that all jets are functioning properly• Clean the print head.
Printing problems when starting up due to a dry print head	Remove the printer cartridge from the scanner and, using a damp swab, dab (do not wipe) the print head on the printer cartridge, replace the printer cartridge and try again.
Not printing	<ul style="list-style-type: none">• Check to be sure that the printer cartridge is securely in the desired print position in the scanner.• Be sure the tape is removed from the print head.
Ink streaks on the rear side of the scanned documents	<ul style="list-style-type: none">• Verify that the printer has been enabled in the application software and that the expected print string has been specified.

Troubleshooting

Use the chart below as a guide to check possible solutions to problems you may encounter when using the High Resolution Printer Accessory.

Problem	Possible Solution
Print quality is poor or inconsistent	Check the following: <ul style="list-style-type: none">• Be sure the printer cartridge is not empty.• Be sure the printer cartridge is properly installed.• Be sure the printer cartridge is in the correct position for printing.• Verify that the printer has been enabled in the application software and that the expected print string has been specified.• Run a print test to verify that all jets are functioning properly• Clean the print head.
Printing problems when starting up due to a dry print head	Remove the printer cartridge from the scanner and, using a damp swab, dab (do not wipe) the print head on the printer cartridge, replace the printer cartridge and try again.
Not printing	<ul style="list-style-type: none">• Check to be sure that the printer cartridge is securely in the desired print position in the scanner.• Be sure the tape is removed from the print head.
Ink streaks on the rear side of the scanned documents	<ul style="list-style-type: none">• Verify that the printer has been enabled in the application software and that the expected print string has been specified.

Free Manuals Download Website

<http://myh66.com>

<http://usermanuals.us>

<http://www.somanuals.com>

<http://www.4manuals.cc>

<http://www.manual-lib.com>

<http://www.404manual.com>

<http://www.luxmanual.com>

<http://aubethermostatmanual.com>

Golf course search by state

<http://golfingnear.com>

Email search by domain

<http://emailbydomain.com>

Auto manuals search

<http://auto.somanuals.com>

TV manuals search

<http://tv.somanuals.com>