

# **KODAK Photo Printer Visual Calibration Utility**

## **User Manual**

**Part No. 4J5912**

# Kodak

Eastman Kodak Company  
343 State Street  
Rochester, NY 14650

© Eastman Kodak Company, 2007

Kodak is a trademark of Eastman Kodak Company.

---

# Table of Contents

Installing the Calibration Utility .....	1
Launching the Calibration Utility.....	2
From the WINDOWS Printer Driver .....	2
From the WINDOWS Desktop .....	3
From the MACINTOSH OS 10.4 Desktop .....	3
Using the Calibration Utility .....	4
Uninstalling the Calibration Utility .....	7
WINDOWS XP Operating System .....	7
WINDOWS VISTA Operating System .....	7
MACINTOSH OS 10.4.....	7



---

# Calibrating the Printer

The KODAK Photo Printer Visual Calibration Utility (Calibration Utility) lets your Kodak printer produce the best possible color response. Calibration adjusts the response of the printer so that a specific data input value yields a specific color density output.

The printer is shipped with default factory calibration values. You can set up your printer and print right away without having to calibrate the printer. However, if you are dissatisfied with the color of your prints, follow the steps in this chapter to calibrate your printer.

## Installing the Calibration Utility

**IMPORTANT:** *You must have the printer driver installed to use the Calibration Utility.*

1. Download the KODAK Photo Printer Visual Calibration Utility from the Support Page for your printer. Visit [www.kodak.com](http://www.kodak.com).
2. Double-click the installer file.
3. Follow the on-screen instructions to install the calibration utility.

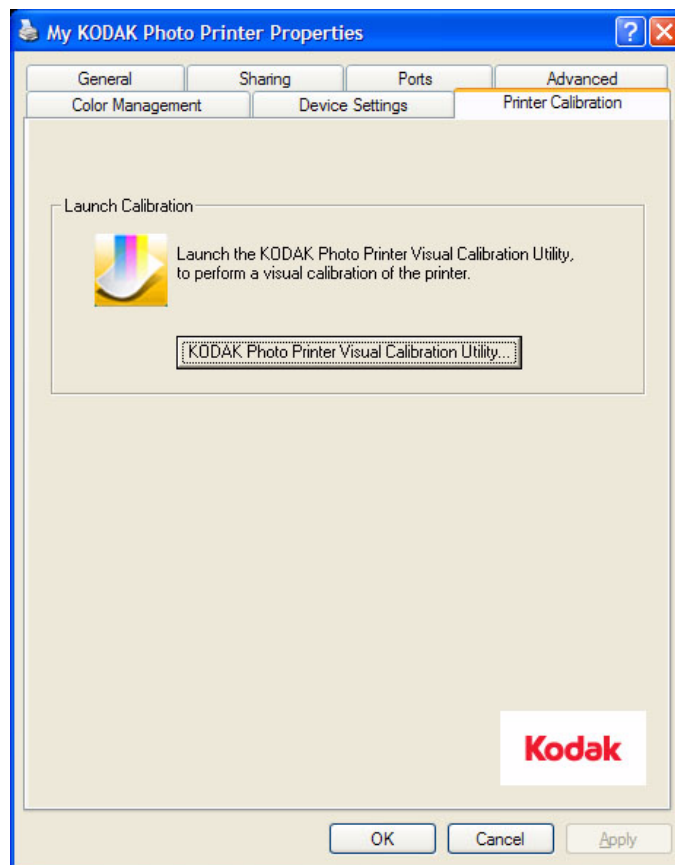
## Launching the Calibration Utility

### From the WINDOWS Printer Driver

1. For your operating system, do the following:

WINDOWS VISTA	WINDOWS XP
Select <b>Start&gt;Control Panel&gt;Hardware and Sound&gt;Printer.</b>	Select <b>Start&gt;Printers and Faxes.</b>

2. Click **KODAK Photo Printer.**
3. Select **File>Properties.**
4. Click the **Printer Calibration** tab.



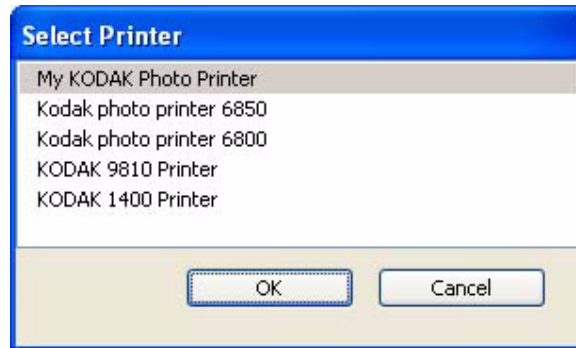
5. Click **KODAK Photo Printer Visual Calibration Utility...**

*The KODAK Photo Printer Visual Calibration Utility dialog box opens. The name of the printer and the paper installed appear in the upper left of the dialog box.*

## From the WINDOWS Desktop

1. Click **Start>Programs>KODAK Photo Printer>KODAK Photo Printer Calibration Utility**.

NOTE: If you have more than one Kodak printer that uses the Calibration Utility, the following dialog box may appear.



2. Select a printer to calibrate, and click **OK**.

*The KODAK Photo Printer Visual Calibration Utility dialog box opens. The name of the printer and the paper installed appear in the upper left of the dialog box.*

## From the MACINTOSH OS 10.4 Desktop

1. Double-click **KODAK Visual Calibration Utility** in the /Applications/Utilities folder.

NOTE: If you have more than one Kodak printer that uses the Calibration Utility, a Select Printer dialog box may appear.

2. Select a printer to calibrate, and click **OK**.

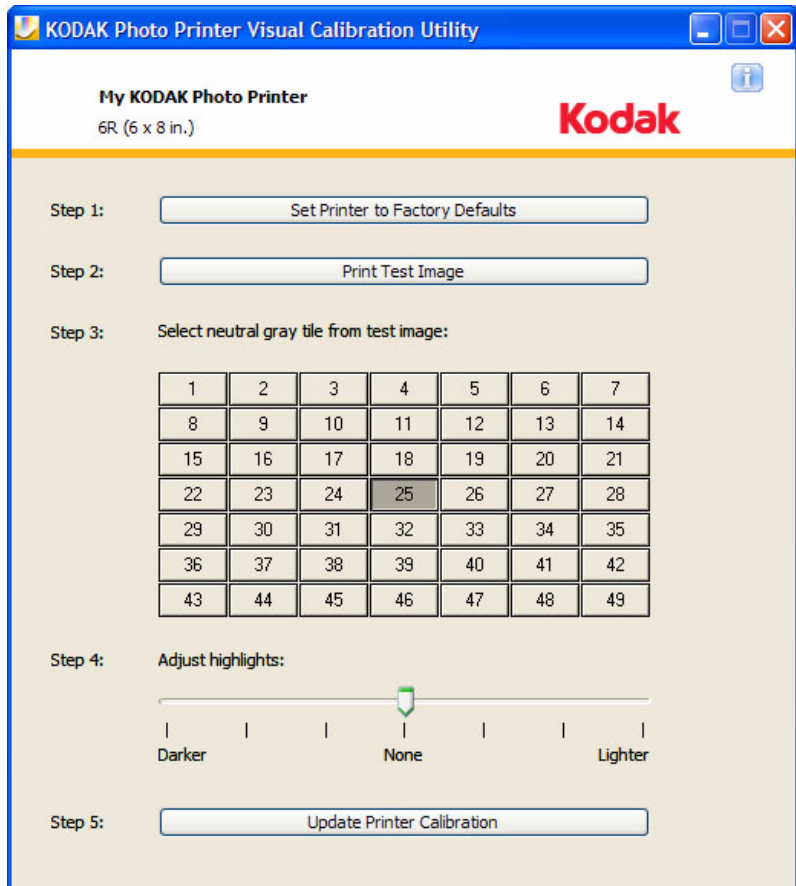
*The KODAK Photo Printer Visual Calibration Utility dialog box opens. The name of the printer and the paper installed appear in the upper left of the dialog box.*

## Using the Calibration Utility

Calibrate your printer whenever the color balance of the prints does not look right. You may also want to calibrate the printer after it has been serviced.

**IMPORTANT:** *Setting the printer to factory defaults returns the printer's calibration to known values.*

1. Click **Set Printer to Factory Defaults**.



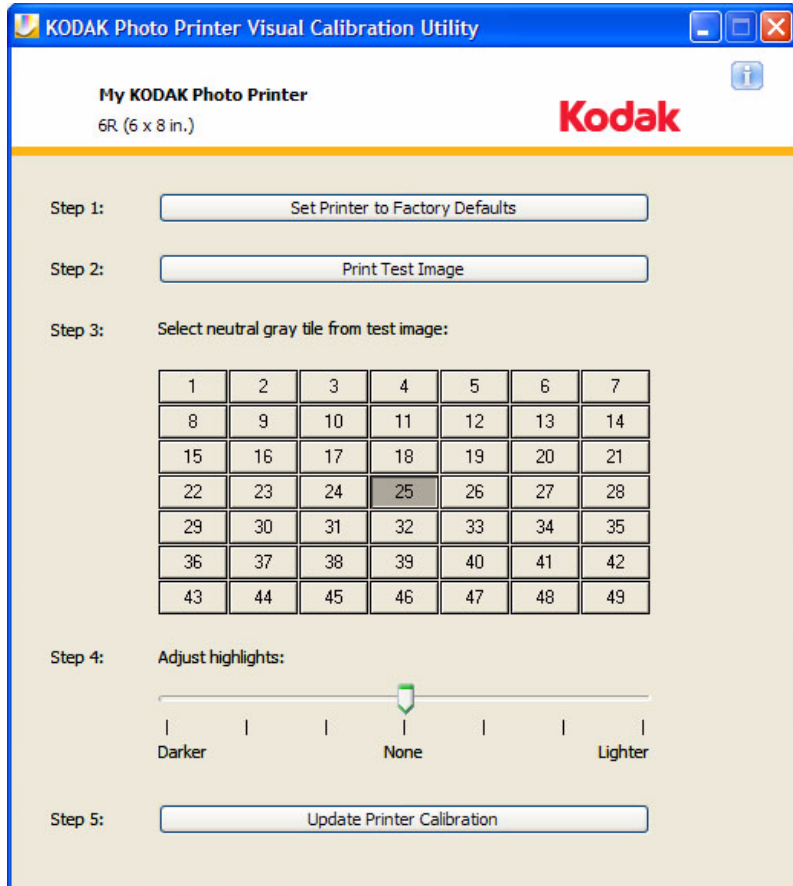


2. Click **Print Test Image**.

*The printer prints the test print.*



3. Examine the test print from the printer to determine the most neutral gray patch. Then click the patch in the Calibration Utility screen that corresponds with the most neutral patch on the test print.



**IMPORTANT:** *Only do Step 4 if you want to adjust the highlights so that your prints meet your personal preference. After adjusting the highlights, check your prints to make sure that they look the way you want.*

4. Move the slider to adjust the highlights.

**IMPORTANT:** *If you selected a patch in Step 3 or adjusted the highlights in Step 4, you must do Step 5.*

5. Click **Update Printer Calibration**.

*The calibration utility calculates a new calibration table, which is downloaded to the printer and updates any adjustment you made to the highlights.*

6. Click **Print Test Image** to make another test print to check the calibration results.

**NOTE:** Do Steps 3 - 6 until patch 25 is the most neutral gray.

## Uninstalling the Calibration Utility

### **WINDOWS XP Operating System**

1. Select **Start>Settings>Control Panel>Add or Remove Programs**.
2. Select the **KODAK Visual Calibration Utility**.
3. Click **Remove**.

### **WINDOWS VISTA Operating System**

1. Select **Start>Control Panel>Programs>Uninstall a program**.
2. Select the **KODAK Visual Calibration Utility**.
3. Click **Uninstall**.

### **MACINTOSH OS 10.4**

1. Drag the **KODAK Visual Calibration Utility** folder from **/Library/Printers/Kodak** to the Trash.
2. Drag the **KODAK Visual Calibration Utility** alias from **/Applications/Utilities** to the Trash.
3. Empty the Trash.



## Free Manuals Download Website

<http://myh66.com>

<http://usermanuals.us>

<http://www.somanuals.com>

<http://www.4manuals.cc>

<http://www.manual-lib.com>

<http://www.404manual.com>

<http://www.luxmanual.com>

<http://aubethermostatmanual.com>

Golf course search by state

<http://golfingnear.com>

Email search by domain

<http://emailbydomain.com>

Auto manuals search

<http://auto.somanuals.com>

TV manuals search

<http://tv.somanuals.com>