

# Operating Instructions

## Electric fire KH 1117





## Safety information

### ⚠ Danger of electrocution!

- Connect the appliance only to a 50 Hz grounded power socket with mains voltage of 230 V~ and that has been installed according to instructions.
- Do not bend or squeeze the power cord.
- To disconnect, always pull out the plug at the power socket, do not pull on the power cord.
- Never touch the chimney, power cord and power plug with wet hands.
- Do not use extension cables.
- Do not wind the power cord around the casing of the chimney.
- Unplug your chimney immediately after use. The power plug is completely free of power supply only when you pull it out of the power socket.
- Do not immerse the chimney in liquids under any circumstances and do not allow any liquids to enter the device casing of the chimney. Do not expose the appliance to humidity and do not use it outdoors. There exists the danger of electrocution. However, if liquid does enter the device casing, pull out the plug of the appliance from the power socket and have it repaired by a qualified technician.
- Never use the chimney in proximity of water or in damp cellar areas. The proximity to water presents a danger, even if the chimney is switched off.
- In case of a breakdown and before cleaning the chimney, pull out the power plug from power socket.
- If the power cord is damaged, have the chimney repaired by a qualified technician, before you use it again.
- Do not operate the chimney, if it has fallen down or is damaged. Have the appliance checked or repaired by qualified technicians.
- Do not open or repair the device casing of the chimney. In such cases, safety shall not be guaranteed and the warranty shall expire. Allow only authorised technicians to repair the defects in the chimney.

### ⚠ Fire hazard!

- Never place the chimney close to inflammable materials, liquids or gases. Leave at least a one meter space on all sides and on the top. Never place the chimney directly under a wall socket.
- Do not cover the appliance when in operation. Clean it at regular intervals.
- Never leave the chimney unsupervised when in operation.
- Always place the chimney on an even base. Otherwise, the chimney could tip over and lead to a fire.
- Never place the chimney close to heat sources, and protect the power cord from damages. Therefore, do not keep the power cord lying in front of the chimney.
- Do not use the chimney with a time switch or a similar appliance. In case of auto-start, there exists a fire hazard if the chimney is covered or has been set up incorrectly.

### ⚠ Risk of injury or burning

- Never insert objects or body parts such as fingers inside the chimney through the iron rods.
- Never allow children to use the chimney without the supervision of an adult. Explain to children the dangers of the appliance.
- The chimney heats up when in operation. Therefore, never carry it when hot and do so only by the handle provided for this purpose
- Lay the power cord such that no one treads or trips over it.

## Intended Use

The chimney is used for decorating and heating living rooms.

This chimney is exclusively meant for household use and may be used only for this purpose. Observance of all the information in these operating instructions, especially the safety instructions is also from this point of view.

This chimney is not intended for commercial or industrial use.

## Description of the appliance

- ① Function switch
- ② Thermostat
- ③ Flame regulator
- ④ Screws of the glass top
- ⑤ Glowing embers

## Technical Data

Rated voltage: .....230 V / ~50 Hz  
 Power rating: .....Max. 1850 Watt  
 Light bulb : .....2 candle bulbs, E-14, max. 25 W

## Before the First Use

- Before starting up the appliance, make certain that ...
- ⇒ the appliance or the accessories are in perfect condition,
  - ⇒ all the packing material has been removed.




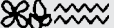
## Operation

The chimney is operated by means of three switches:

### Function switch:

You can set the basic functions with the Function switch.

⇒ Turn the Function switch ① step by step for the following settings:

Position	Setting
0	OFF
	only flames
	Ventilator without heating
	low heat emission (900 W)
	maximum heat emission (1850 W)

### Thermostat:

If you have selected a setting with heat emission through the Function switch ① you can control the room temperature with the thermostat ②.

⇒ Turn the Thermostat ② to the "max" position. As soon as the desire room temperature is reached...  
 ⇒ Turn the Thermostat ② back till you hear an audible click.

The in-built thermostat now ensures a constant room temperature.

### Flame regulator

With the Flame regulator ③ you can regulate the flame to any size.

⇒ Turn the Flame regulator ③ in the clock-wise direction until the desired flame size is obtained.

## Replacing the bulbs

### ⚠ Danger of life-threatening electric shock:

- Before you replace the bulbs, pull out the plug from the power socket,
- and let it cool down completely.
- Only use candle bulbs with an E-14 thread and max. 25 Watt

⇒ Loosen both the screws ④ with a slotted screwdriver.  
 ⇒ Carefully lift the glass top forward and put it down safely.

⇒ Take out the glowing embers ⑤ by pressing with both the hands and taking it forward.

⇒ Now replace the bulbs.  
 ⇒ Reassemble the chimney in reverse order and fix the glass plate with the screws.

## Cleaning

### ⚠ Danger of life-threatening electric shock:

- Before you clean the chimney, pull out the plug from the power socket,
- and let it cool down completely.
- Never immerse the chimney in water or other liquids for cleaning

⇒ Clean the casing with a damp cloth.  
 ⇒ Clean the glass plates with a glass cleaner.

Do not use cleansers or solvents. They can damage the plastic surfaces.

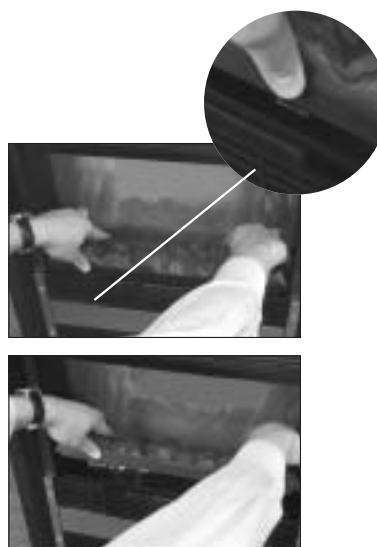
## Disposal

Never dispose off the appliance with normal household waste.

Enquire with your local town council or regional authority about the appropriate method of environment-friendly disposal.

## Warranty & customer service

The warranty conditions and service centre address can be found in the enclosed warranty slip.





## Free Manuals Download Website

<http://myh66.com>

<http://usermanuals.us>

<http://www.somanuals.com>

<http://www.4manuals.cc>

<http://www.manual-lib.com>

<http://www.404manual.com>

<http://www.luxmanual.com>

<http://aubethermostatmanual.com>

Golf course search by state

<http://golfingnear.com>

Email search by domain

<http://emailbydomain.com>

Auto manuals search

<http://auto.somanuals.com>

TV manuals search

<http://tv.somanuals.com>