

**Nikon****En GP-N100 Utility Software Manual**

Thank you for your purchase of a GP-N100. This manual describes how to use the GP-N100 Utility to download the latest assisted GPS data from Nikon servers to your GP-N100. To ensure trouble-free operation, read this manual thoroughly before proceeding and keep it where it will be read by all those who use the product.

** Assisted GPS**

Assisted GPS (A-GPS or aGPS) uses files containing supplementary information to reduce the time needed to determine the current position. Assisted GPS files for the GP-N100 remain valid for about two weeks after download. Note that the GP-N100 will continue to function normally in the absence of valid assisted GPS data, although more time may be required to determine the current position.

**System Requirements**

Before installing the GP-N100 Utility, confirm that your system meets the following requirements:

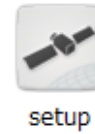
	<i>Windows</i>	<i>Mac OS</i>
<b>CPU</b>	Pentium 1.3 GHz or better	PowerPC G4 or G5, Intel
<b>OS</b>	Pre-installed versions of Windows 7 Home Basic/Home Premium/Professional/Enterprise/Ultimate (Service Pack 1), Windows Vista Home Basic/Home Premium/Business/Enterprise/Ultimate (Service Pack 2), Windows XP Home Edition/Professional (Service Pack 3). GP-N100 Utility runs as a 32-bit application in 64-bit editions of Windows 7 and Windows Vista.	Mac OS X version 10.4.11, 10.5.8, or 10.6.7
<b>RAM</b>	<ul style="list-style-type: none"> <li>• <b>Windows 7/Windows Vista:</b> 1 GB or more</li> <li>• <b>Windows XP:</b> 512 MB or more</li> </ul>	256 MB or more
<b>Hard-disk space</b>	A minimum of 200 MB available on the startup disk for installation and when GP-N100 Utility is running	
<b>Monitor</b>	<ul style="list-style-type: none"> <li>• <b>Resolution:</b> 1,024 × 768 pixels (XGA) or more</li> <li>• <b>Colors:</b> 16-bit color (High Color/thousands of colors) or more</li> </ul>	
<b>Miscellaneous</b>	<ul style="list-style-type: none"> <li>• Built-in USB port required. Operation is not guaranteed when the GP-N100 is connected via a USB hub.</li> <li>• Internet connection required</li> </ul>	

## Installation

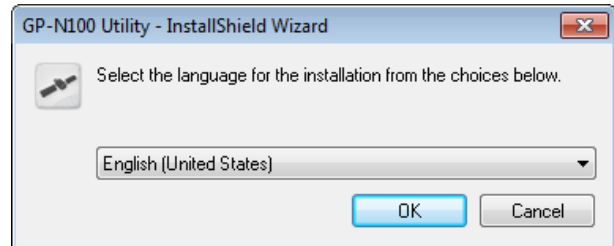
Before installing the GP-N100 Utility, log in to an account with administrator privileges.

### Windows

1 Double-click **setup** to start the installer.



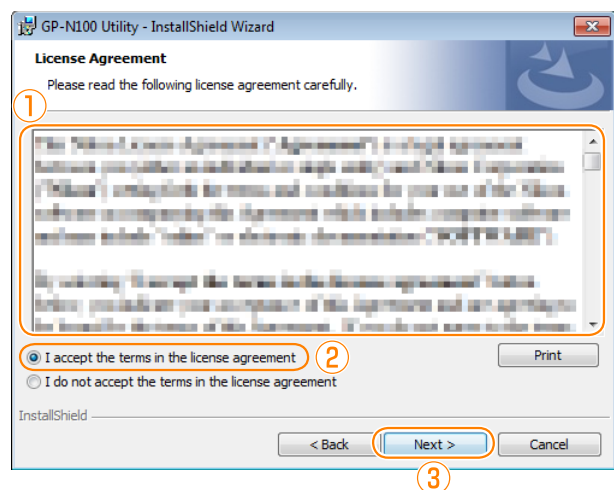
2 Select a language and click **OK**.



3 Click **Next**.

4 If prompted, select a region and click **Next**.

5 After reading the license agreement (1), select **I accept the terms in the license agreement** (2) and click **Next** (3).



6 Follow the on-screen instructions to complete installation.

7 Click **Finish** to exit the installer when installation is complete.

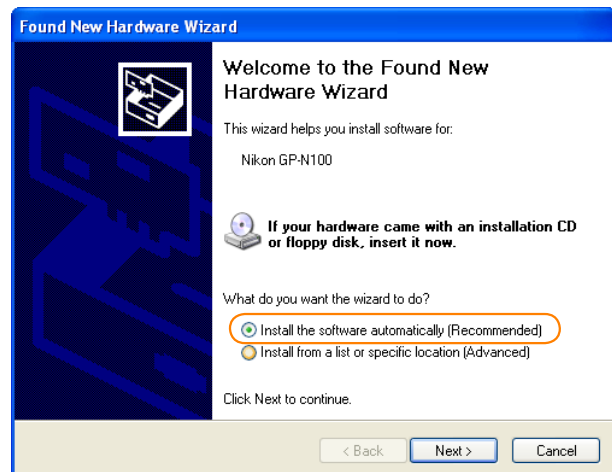
### Installing the Device Driver (Windows XP Only)

After installing the GP-N100 Utility under Windows XP, you will need to install the two GP-N100 device drivers.

- 1 After making sure that the computer is on and that Windows is running, connect the GP-N100 via USB. The "Found New Hardware Wizard" will start; if the dialog shown at right is displayed, select **No, not this time** and click **Next**. If this dialog is not displayed, proceed to Step 2.



- 2 Select **Install the software automatically (Recommended)** and click **Next** to start installation. If a warning is displayed during the install, click **Continue**.



- 3 Click **Finish** to exit the installer when installation is complete. Installation for the second driver will then begin as described in Step 1; follow the steps above to install the second driver.

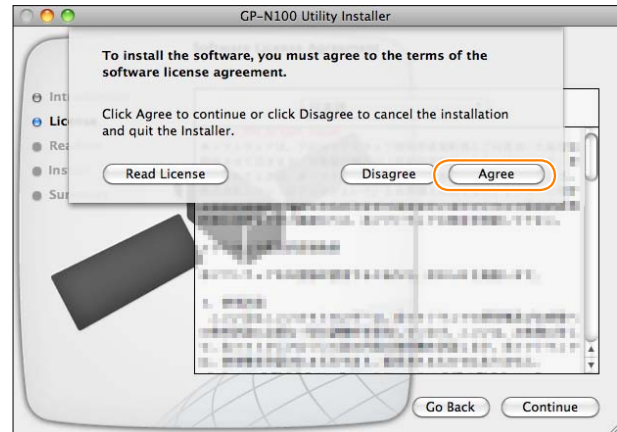
**Mac OS**

1 Double-click **Nikon GP-N100 Utility Installer** to start the installer.

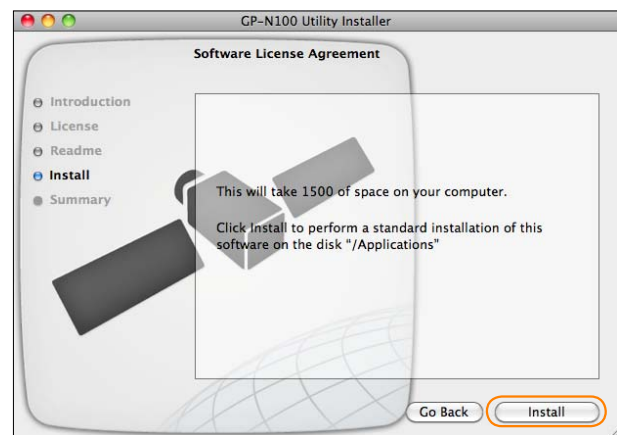


2 Follow the on-screen instructions to begin installation.

3 Click **Agree** to accept the license agreement when prompted.



4 Click **Install** and follow the on-screen instructions to complete installation.



5 Click **Quit** to quit the installer when installation is complete.

6 The computer must be restarted when installation is complete.

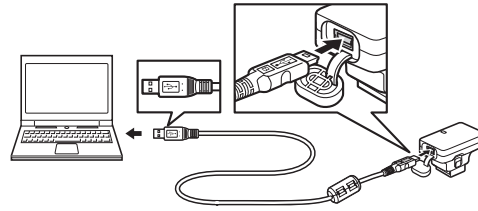
**✓ Adding the GP-N100 Utility to the Dock**

The GP-N100 Utility is not added to the Dock automatically. Add it to the Dock manually if required.

## Downloading Assisted GPS Data to the GP-N100

Follow the steps below to download assisted GPS data to the GP-N100.

- 1 Start the computer and connect the GP-N100 via USB.



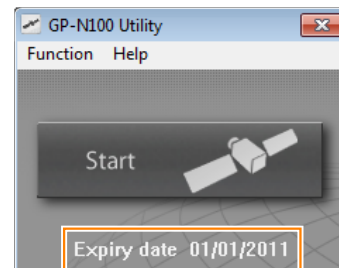
- 2 Start the GP-N100 Utility as described below (note that the GP-N100 Utility does not start automatically when the GP-N100 is connected).

**Windows:** Double-click the **GP-N100 Utility** shortcut on the desktop, or select **GP-N100 Utility > GP-N100 Utility** from the program list in the Windows start menu.

**Mac OS:** Double-click the **GP-N100 Utility** icon in the “Applications” folder.

- 3 Click **Start** to connect to the Internet and begin downloading assisted GPS data to the GP-N100.

- 4 When download is complete, click **OK** and confirm that the expiry date has been updated.



Expiry date

- 5 Quit GP-N100 Utility and disconnect GP-N100.

### ✓ Expiry Date

Assisted GPS files for the GP-N100 remain valid for about two weeks after download. Note that the GP-N100 will continue to function normally in the absence of valid assisted GPS data, although more time may be required to determine the current position.

### ✎ Menus

The menu options available in the GP-N100 Utility menus are described below.

#### GP-N100 Utility Menu (Mac OS Only)

Option	Description
About GP-N100 Utility	Display version information.
Quit GP-N100 Utility	Quit the GP-N100 Utility.

#### Help Menu

Option	Description
Show Help	View help for the GP-N100 Utility.
Version (Windows only)	Display version information.

#### Function Menu

Option	Description
Upload A-GPS file	Download the latest assisted GPS data from Nikon servers to the GP-N100.
Update Firmware	Download and install the latest firmware for the GP-N100, if available.
Exit (Windows only)	Exit the GP-N100 Utility.

## Free Manuals Download Website

<http://myh66.com>

<http://usermanuals.us>

<http://www.somanuals.com>

<http://www.4manuals.cc>

<http://www.manual-lib.com>

<http://www.404manual.com>

<http://www.luxmanual.com>

<http://aubethermostatmanual.com>

Golf course search by state

<http://golfingnear.com>

Email search by domain

<http://emailbydomain.com>

Auto manuals search

<http://auto.somanuals.com>

TV manuals search

<http://tv.somanuals.com>