

Senseo®

SL7810/65 Coffee Machine



Join the SENSEO® club!

Go to www.senseo.com and register
to receive exciting news about
SENSEO® Coffee!



**DOUWE
EGBERTS**



IMPORTANT SAFEGUARDS

When using electrical appliances, basic safety precautions should always be followed including the following:

Read all instructions before using the appliance.

1. Do not touch hot surfaces. Use handles or knobs. Care must be taken to prevent burns which can occur from touching hot parts or spilling hot liquids.
2. To protect against fire, electrical shock and injury to persons, do not immerse cord, plug, or appliance in water or other liquid.
3. Close supervision is necessary when any appliance is used by or near children.
4. Unplug from outlet when not in use and before cleaning. Allow to cool before putting on or taking off parts and before cleaning appliance.
5. Do not operate this appliance with a damaged cord or plug, or after the appliance malfunctions or has been damaged in any manner. For assistance call 1-866-473-6736
6. Use this appliance only for its intended purpose as described in this manual. Do not use accessory attachments not recommended by Sara Lee Corporation as they may result in fire, electric shock or injury to persons.
7. Do not use outdoors.
8. Do not let cord hang over edge of table or counter or touch hot surfaces. Operate on a flat, stable surface away from edge of counter to prevent accidental tipping.
9. Do not place Coffee Machine on or near a hot gas or electric burner, or in a microwave or oven.
10. This appliance is intended for household use ONLY; it is not for commercial or industrial use.
11. To disconnect Coffee Machine, press power button (I) to 'OFF', then remove plug from electrical outlet. Remove plug by gripping plug body and pulling it from the outlet. Never yank or twist cord to unplug.
12. Do not use Coffee Machine if lid has a cracked, loose, weakened or damaged lever.
13. This appliance does not work at temperatures below 50°F/10°C.

14. Do not use this appliance at altitudes higher than 6800 ft./ 2200m above sea level.
15. Flush the Coffee Machine with fresh water before using it for the first time (See 'Preparing the machine for use'). This will cause the boiler to fill with water; which is essential for the machine to work properly.
16. To prevent scalds and/or property damage, always make sure Coffee Machine lid is securely in place and properly locked before you start using the machine and during brew cycle. Do not force when opening or closing lid.
17. Do not open lid until Coffee Machine has finished brew cycle. Hot steam or hot water trapped under lid cover could burn your fingers.
- 18. Warning: To reduce the risk of fire or electric shock, do not remove the bottom cover. No user serviceable parts are inside. For assistance call 1-866-473-6736**

SAVE THESE INSTRUCTIONS

SPECIAL INSTRUCTIONS

This Coffee Machine has a short cord to reduce the hazards of becoming entangled in or tripping over a longer cord. An extension cord may be used if the rating is equal to or greater than the rating of the Coffee Machine. Use an extension cord rated 13 amperes or greater. Care must be taken to arrange extension cord so that it does not hang over the edge of counter top or table top, where it can be pulled on by children or tripped over unintentionally. Operating the Coffee Machine and another appliance at the same time from the same electrical circuit could cause an electrical overload, which would blow the fuse or trip the circuit breaker.

SPECIAL POLARIZED PLUG INSTRUCTIONS

This Senseo Coffee Machine has a polarized plug (one blade is wider than the other) as an added safety feature. To reduce the risk of electric shock:

- Plug will fit into polarized outlet only one way.
- If plug does not properly fit into outlet at first, reverse it.
- If plug still does not fit, contact a qualified electrician.

DO NOT ATTEMPT TO DEFEAT THIS SAFETY FEATURE IN ANY WAY.

WARNING:

- To avoid risk of personal injury or damage to property as a result of overflow, be sure that the cup or mug is centered under the coffee outflow unit during the brew cycle.
- Brewed coffee and coffee pods are very hot. Handle with care to avoid scalding.
- If coffee outflow unit overflows or fails to drain into cup/mug during brewing cycle, do not open lid or handle coffee outflow unit or coffee pod holder(s). Unplug Coffee Machine and wait for contents to cool before handling.
- Do not remove any part of Coffee Machine or cup/mug during the brew cycle as scalding could occur.
- Use only fresh, cool water in this appliance. Do not put any other liquids in this appliance except as instructed in the 'Descaling' section. Do not refill the water reservoir with hot water or coffee.
- DO NOT attempt to move an appliance containing hot liquids or during the brewing process. Allow appliance to cool completely before moving.
- Keep appliance at least 4 inches away from walls or other objects while operating. Do not place any object on top of coffee machine while operating.

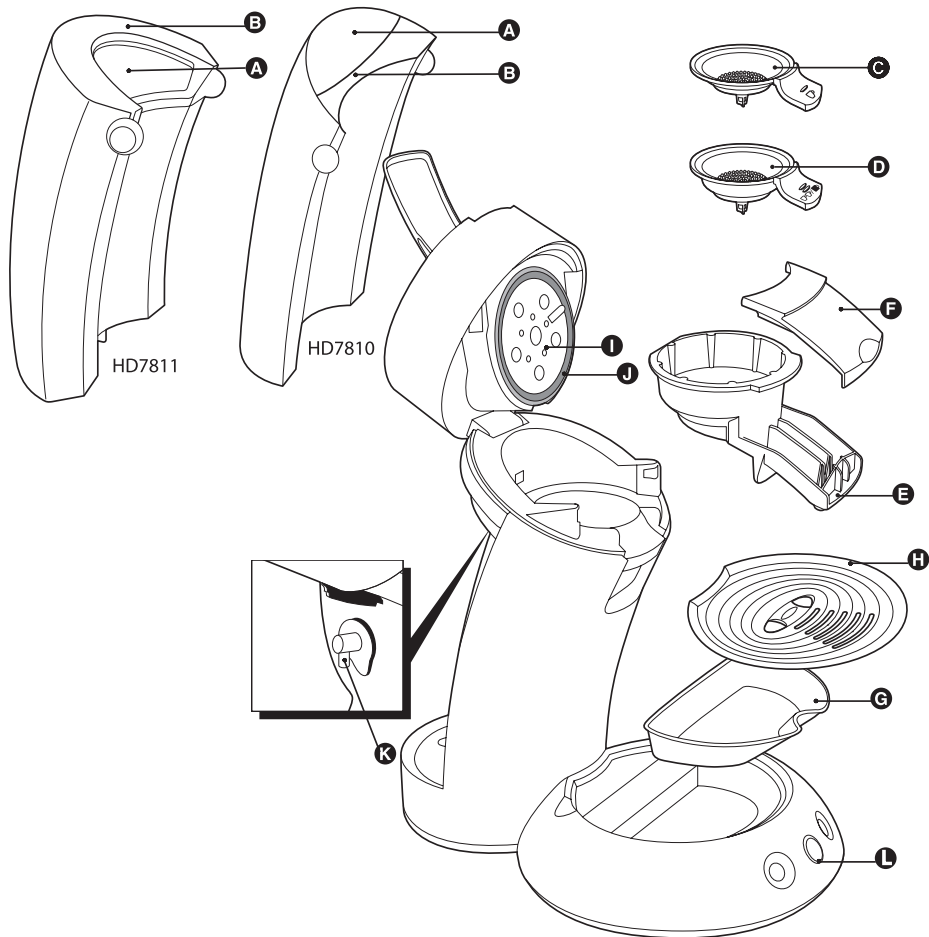
**PLEASE READ AND SAVE THIS
INSTRUCTION BOOKLET.**



TABLE OF CONTENTS

Features	6
Introduction	7
Preparing the machine for use	8
Brewing coffee	10
Cleaning	12
Descaling	13
Storage	14
Assistance	15
Trouble shooting guide	15
Warranty	17

To fully benefit from the support that Senseo offers, register your product at www.senseo.com



Features

- A** Water reservoir
- B** Reservoir splash guard
- C** 1-pod holder; for 1 small cup of coffee (125 ml/app. 4.0 oz)
- D** 2-pod holder; for 2 small cups of coffee (125 ml/app. 4.0 oz each) or 1 mug of coffee (250 ml/app. 8.0 oz)
- E** Coffee outflow unit
- F** Cover of coffee outflow unit
- G** Drip tray
- H** Cup tray
- I** Metal distribution disk
- J** Sealing ring
- K** Outflow valve
- L** Indicator light



Introduction

With the Senseo® coffee machine by Senseo you can enjoy a perfect cup of coffee - topped with a rich frothy coffee layer - whenever you feel like it. Each cup is freshly brewed, so you're always sure of that pure, smooth taste. The patented Senseo brewing system in combination with the special Senseo coffee pods makes sure you get only the very best in flavor and aroma from freshly roasted coffee.

To optimize the taste of the coffee, you should keep the following aspects in mind:

Fresh water

Use fresh water every day. Before using for the first time or if you have not used the machine for some time, rinse the water reservoir, fill it with fresh water and flush the machine before you begin brewing coffee (see 'Preparing the machine for use').

Senseo coffee pods

In order to avoid damage, use only Senseo coffee pods that have been specifically developed for your Senseo coffee machine for a pure, smooth taste. The Senseo coffee pods will stay fresh longer if you close the package by means of the keep-fresh seal after use or if you store them in a storage container.

A clean machine

Scale build-up may cause overheating of the heating element and may make the safety cut-out operate prematurely, switching off before the water boils. Scale may also reduce the working life of the machine and may lengthen the brewing time. Clean and descale your Senseo coffee machine regularly (see 'Cleaning' and 'Descaling'). Remove used coffee pods after brewing. If a used pod has been left in the coffee machine and you have not used the machine for some time, flush the machine before you use it again (see 'Preparing the machine for use').

Preparing the machine for use

- Use this Senseo coffee machine for its intended household use as described in this manual.

YOU CANNOT BREW COFFEE IF YOU HAVE NOT FLUSHED THE SENSEO COFFEE MACHINE FIRST!

The flushing cycle causes the boiler to be filled with water. After this the coffee machine is ready for use.

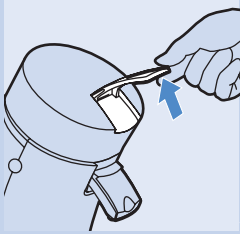
Flush the machine in the following way:



- 1** Remove the water reservoir.



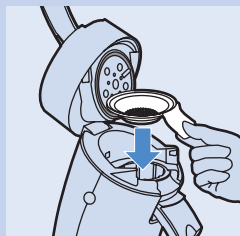
- 2** Fill the water reservoir with cold water up to the MAX indication and put it back into the machine.



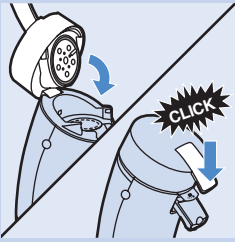
- 3** Release the lid by moving the lever upwards.



- 4** Open the lid.



- 5** Put either the 1- or 2-pod holder in the machine without using any coffee pod(s).



6 Close the lid and lock the lever.




- ▶ Make sure the lever is properly locked by pushing it down until it snaps home with a click.
- ▶ Never flush the machine with the lid open! The lid must be properly locked.

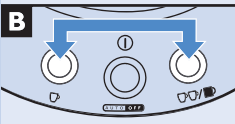
7 Put the plug into a 120V AC electrical outlet.



8 Put a bowl (with a capacity of at least 1.5 liters/1.6 qt.) under the coffee outflow unit to collect the water.



9 Press on/off button . Then press both the  and  buttons briefly at the same time.

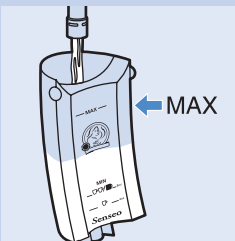


- ▶ The machine will fill itself with water from the water reservoir. This will take some time and you will probably not notice that this is happening. After a while, the machine will start flushing and it will switch itself off after the flushing cycle. During the flushing cycle the machine produces more noise than during a regular brewing cycle.

- ▶ Before brewing coffee for the first time, clean the coffee outflow unit and the pod holders with hot water and some dish soap or in a dishwasher. Clean the water reservoir thoroughly in hot water, if necessary with some dish soap.



- ▶ Now your Senseo coffee machine is ready for use!

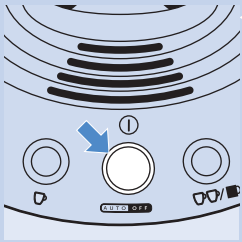
Brewing coffee



1 Fill the water reservoir with cold water up to the MAX indication and put it back into the machine.

Never pour milk, coffee, hot water or carbonated water into the water reservoir:

-  MIN: minimum amount of water required to brew one 4.0 oz. cup of Senseo coffee.
-  MIN: minimum amount of water required to brew one 8.0 oz. mug or two 4.0 oz. cups of Senseo coffee.
- HD7810: A full reservoir allows you to make up to five 4.0 oz. cups Senseo coffee.



2 Press on/off button .

The indicator light blinks while the water is heating up. Heating up takes approx. 90 seconds.

- ▶ The coffee machine is ready for use when the indicator light is lit continuously.



3 Release the lid by moving the lever upwards.

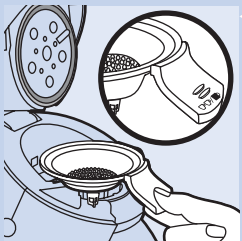
4 Open the lid.




5 First place the appropriate coffee pod holder in the machine.

- ▶ Make sure the coffee pod holder is clean and the sieve in the center is not clogged (i.e. with loose coffee grounds).

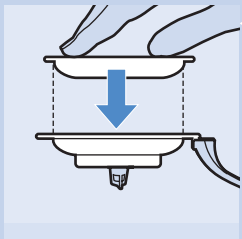
- ▶ If you want to make one 4.0 oz. cup of Senseo coffee, use the 1-pod holder.



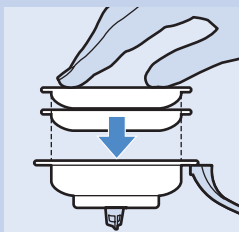
- ▶ If you want to make one 8.0 oz. mug or two 4.0 oz. cups of Senseo coffee, use 2 coffee pods in combination with the deeper 2-pod holder and the  button.

6 Place the Senseo coffee pod(s) properly in the center of the pod holder, with the flat Senseo side up and the rounded side facing down.

- ▶ Use Senseo coffee pods that have been specifically developed for your Senseo coffee machine for a pure and smooth taste.

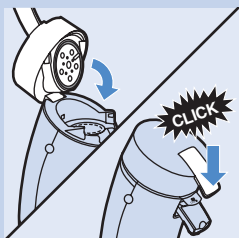


- ▶ Place 1 Senseo coffee pod in the 1-pod holder or



► Place 2 Senseo coffee pods in the 2-pod holder.

- Make sure the coffee in the pod(s) is evenly distributed and press the pod(s) lightly into the pod holder.
- Never use torn pods or normal ground coffee, as this could cause the machine to become blocked.



7 Close the lid and lock the lever.

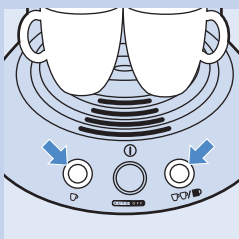
Always check if the lid is properly locked. The lever must be pushed down until it snaps home with a click.

Never start brewing coffee with the lid open! The lid must be properly closed.



8 Place one cup, two cups or one mug under the outflow openings.

If you are using cups, make sure they have a capacity of app. 5.0 oz. If you are using a mug, make sure the mug has a capacity of app. 10.0 oz. Do not use cups or mugs that are too large, as they will cause the coffee to get cold more quickly. If using one cup or one mug, be sure to position the cup or mug right under the coffee outflow unit with its two openings



9 Press the button indicating the number of cups of Senseo coffee you want to brew.

- ☕ for one 4.0 oz. cup
- ☕☕ for two 4.0 oz. cups or one 8.0 oz. mug

► The Senseo coffee machine starts brewing.

- The machine automatically supplies the optimal amount of water.
- You can interrupt the brewing process at any time by pressing the on/off button **⏻**. If you switch the machine back on after having interrupted the brewing process, the machine will NOT complete the interrupted brewing cycle.

Do not remove the water reservoir during a brewing cycle, as this will cause the machine to draw in air. When this happens, the next cup will only be partly filled.

If the mug/cups is/are half full when the machine stops brewing, there was not enough water left in the water reservoir to brew two cups or one mug. Refill the water reservoir and press button ☕ to fill up the two cups or mug.


 AUTO OFF

- 10** Remove and discard the coffee pod(s) after use by lifting the coffee pod holder out of the machine and emptying it. Coffee pod(s) should not be used more than one time.

Be careful when doing this, for there may still be some hot water/coffee on the coffee pod(s) or steam may escape. If the coffee pod sticks to the metal distribution disk inside the lid, let the pod cool down first before carefully removing it, making sure not to touch the hot metal disk.

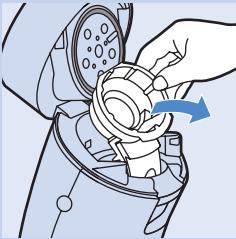
Tips

- ▶ By rinsing the coffee pod holders and the coffee outflow unit regularly, you will make sure that the coffee always tastes best.
- ▶ Senseo coffee will taste best if you stir it before drinking it.
- ▶ If you intend to make another cup of Senseo coffee later, just leave the coffee machine switched on. The machine will automatically switch itself off after app. one hour.

Cleaning

Never immerse the Senseo coffee machine in water or any other liquid.

Never clean the machine by flushing it with the lid open.

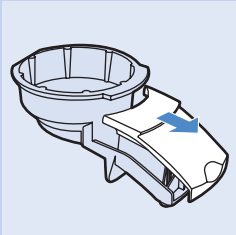


- 1** Always turn machine off and unplug the machine before cleaning it.

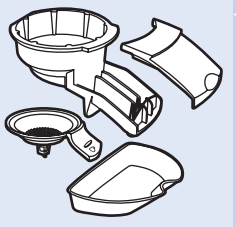
- 2** Clean the outside of the machine with a moist cloth.

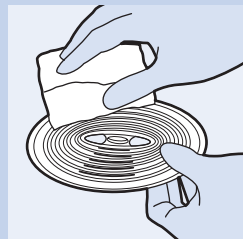
- 3** Remove the coffee outflow unit.

- ▶ You can disassemble the coffee outflow unit for more thorough cleaning!



- 4** Clean the coffee outflow unit, the pod holders and the drip tray in hot water, if necessary with some dish soap, or in the dishwasher.

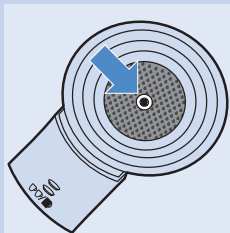




- 5** Hold the cup tray in your hand while cleaning it with hot water, if necessary with some dish soap.

The cup tray can also be cleaned in the dishwasher.

To clean the cup tray, remove it from the machine, as it might prove sharp when handled incorrectly. Always handle it carefully!



- 6** Clean the coffee pod holders in hot water, if necessary with some dishwashing soap or in the dishwasher.

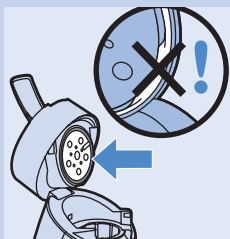
Check if the sieve in the center of the pod holders is clogged. If the sieve is clogged, unplug it by holding the pod holder under a running faucet. If necessary, you can use a soft brush to unplug the sieve.



- 7** Clean the water reservoir in hot water, if necessary with some dish soap or in the dishwasher.

- ▶ The splash guard on the water reservoir can be removed to allow thorough cleaning of the inside.
- ▶ If you are using a soft brush or mesh covered sponge, be careful not to damage the valve in the bottom of the water reservoir.

- 8** Rinse the parts with fresh water after cleaning and put them back into the machine.

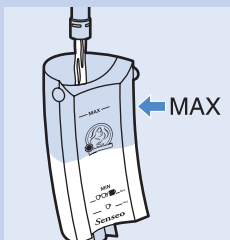


- 9** Clean the metal distribution disk with a moist cloth.

Be careful when you do this; make sure that the rubber sealing ring does not get stuck under the edge of the metal distribution disk. If it does, the coffee machine will start leaking!

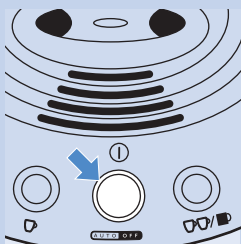
Descaling

Regular descaling will prolong the life of your Senseo coffee machine and will guarantee optimal brewing results for a long time. If the machine is used twice a day on average, it must be descaled once every 3 months.



- 1** Fill the water reservoir up to the MAX indication with white vinegar or with a mixture of descaler and water according to the instructions on the package of the descaler. Then put the water reservoir back into the coffee machine.

Use a citric acid based descaler.



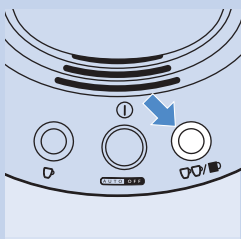
2 Press on/off button ①.

The machine is ready for use when the indicator light is lit continuously.




3 Place the 1-pod holder in the coffee machine, preferably with a used coffee pod in it. Close the lid and make sure it is properly locked.

We advise you to put a used coffee pod in the pod holder when you descale the machine, as it will serve as a 'filter' to prevent the sieve in the pod holder from getting clogged with scale residues.



4 Put a bowl with a capacity of at least 1.5 liters/1.6 qt. under the coffee outflow unit to collect the vinegar or the mixture of descaler and water.

5 Press button  and let the machine operate. Repeat this until the water reservoir is empty.

Never descale the Senseo coffee machine with the lid open. Make sure the lid is properly locked.

6 Repeat steps 1 to 5 with new vinegar or a new mixture of descaler and water.

7 Empty the water reservoir to remove the last vinegar or mixture of descaler and water. Repeat step 1 to 5 with fresh water only (i.s.o. vinegar or descaler) at least 3 times to fully clean the machine. Discard hot water each time.

Do not refill water reservoir with used hot water.

8 Discard the used coffee pod and clean the coffee pod holder after descaling to prevent the sieve in the center from getting clogged.

This coffee machine has no other user-serviceable parts. For assistance call 1-866-473-6736.

Storage

- Do If the coffee machine has already been used and therefore has been flushed with water, it may only be used and stored in a safe, frost-free place to prevent it from becoming damaged.
- Do Empty water reservoir before storing.

Assistance

For assistance call toll free: 1-866-4SENSEO (1-866-473-6736) or visit our website: www.senseo.com.

Information is available 24 hours a day, 7 days a week.

Troubleshooting guide

If you experience a problem with your Senseo coffee machine, you may find the solution in the table below. If the table does not provide the solution to your problem or if you have a question, see the chapter 'Assistance'.

Problem	Solution
The indicator light continues to blink slowly	<p>You need to flush the coffee machine. See 'Preparing the machine for use'.</p> <p>You are using the Senseo coffee machine at an altitude higher than 2200 m/6800 ft. above sea level. This has caused the water in the machine to start boiling before it has reached the required temperature, which prevents the machine from functioning properly. Switch the machine off and do not use it at altitudes higher than 2200 m/6800 ft. above sea level.</p>
The Senseo coffee machine does not produce coffee when used for the first time	The coffee machine must be flushed with water before using it for the first time, so that the boiler will be completely filled with water. Flush the coffee machine (see 'Preparing the machine for use') before you start brewing coffee.
The indicator light continues to blink rapidly	<p>Make sure that the water reservoir has been properly placed;</p> <p>Make sure that there is enough water in the water reservoir (water level above the ☺ MIN level if you want to brew one 4.0 oz. cup and above ☺☺ if you want to brew one 8.0 oz. mug or two 4.0 oz. cups);</p> <p>Make sure that the ambient temperature is not lower than 10°C/50°F. If it is lower, the appliance will not function properly.</p>
Water leaks from the coffee machine	<p>Make sure that the lid is properly closed (the lever must be properly locked);</p> <p>Make sure that the water reservoir has not been filled beyond the MAX level;</p> <p>Make sure that the sieve in the center of the coffee pod holder is not clogged. If it is, unclog the sieve by holding the coffee pod holder under a running tap. If necessary, you can use a soft brush, pin or a toothpick to unclog the sieve;</p> <p>Make sure the coffee pod(s) has/have been put properly in the center of the coffee pod holder with the flat Senseo side up;</p> <p>Make sure the sealing ring has not gotten stuck under the edge of the metal distribution disk (see drawing at the beginning of these instructions for use);</p> <p>Make sure that the drip tray does not overflow. It is unlikely that it will overflow, but it is easier to empty when half full than full.</p> <p>It is perfectly normal for some drops of water to spill onto the counter. This may happen, for instance, when you place or remove the water reservoir. Be careful when removing used coffee pods, for there may still be some water on the pods.</p>

Problem	Solution
	<p>Do not remove the water reservoir when the coffee machine is heating up, as this may cause some water to leak out of the machine (this water would normally end up in the water reservoir).</p> <p>In all other cases, call 1-866-473-6736 for assistance</p>
<p>The lid cannot be opened.</p>	<p>A vacuum may have temporarily formed under the lid. Turn the machine off. Pull the lever up as far as it will go and wait 24 hours before opening the lid.</p> <p>Make sure that the sieve in the center of the coffee pod holder is not clogged. If it is, unclog the sieve by holding the coffee pod holder under a running faucet. If necessary, you can use a soft to unclog the sieve.</p> <p>If problems continue to occur, call 1-866-473-6736 for assistance</p>
<p>The coffee machine produces less coffee than before.</p>	<p>Perhaps the sieve in the centre of the pod holder is clogged. If this is the case, unclog the sieve by rinsing the pod holder under a running faucet. If necessary, you can use a soft brush to unclog the sieve.</p> <p>Descal the machine (see 'Descaling').</p>
<p>The lid cannot be closed properly.</p>	<p>Check if a used coffee pod is sticking to the metal distribution disk. If this is the case, remove the used pod. Make sure that the sealing ring is lying flat.</p>
<p>The machine has been stored in a room that was not frost-free.</p>	<p>Call 1-866-473-6736 for assistance</p>
<p>The Senseo coffee is not strong enough.</p>	<p>Make sure you have used the correct number of pods and pressed the right button. Use 1 pod in combination with the 1-pod holder and the ☺ button. Use 2 pods in combination with the 2-pod holder and the ☺☺ button;</p> <p>Check if the coffee pod(s) has/have been placed properly in the center of the pod holder; to prevent water from escaping along the edge of the pod(s). When you are using two coffee pods on top of each other, make sure that the flat Senseo sides of both pods are facing up and rounded sides are facing down. Press the pods lightly into the pod holder;</p> <p>Make sure you have not used the same pod twice by accident. Do not use a pod twice, as it will give the coffee a bad taste. Use a fresh pod for every brew;</p> <p>The coffee in the pod needs to be evenly distributed;</p> <p>If you prefer a more robust flavor; Senseo coffee pods with a stronger blend are available.</p>
<p>The Senseo coffee is too strong</p>	<p>If you prefer a milder flavor; Senseo coffee pods with a milder blend are available.</p>
<p>The Senseo coffee is not hot enough</p>	<p>Do not use cups that are too large, as they will cause the coffee to get cold more quickly. When using cups, make sure they have a capacity of 150 ml/app. 5.0 oz. When using a mug, make sure it has a capacity of 280 ml/10.0 oz. When using a mug, always use 2 pods in combination with the 2-pod holder and the ☺☺ button.</p>



LIMITED WARRANTY

Sara Lee Corporation hereby warrants that if your Senseo Single Serve Gourmet Coffee Maker Model SL7810 (except cord, coffee pods and accessories) is found to be defective in materials or workmanship during the period one year from the date of purchase, Sara Lee Corporation will, at its option, either (1) repair or replace any defective product without charge to you, or (2) refund your purchase price. This warranty extends only to the original retail purchaser.

IMPORTANT: This warranty does not cover damage resulting from accident, misuse or abuse, lack of reasonable care, the affixing of any attachment not provided with the product, loss of parts, or subjecting the product to any but the specified voltage.¹ Use of unauthorized replacement parts will also void this warranty. Sara Lee Corporation will not pay for warranty service performed by a non-authorized repair service.

In order to obtain warranty service, call our Consumer Affairs Hotline at 1-866-473-6736. You will need proof of purchase to obtain a warranty remedy.

REPAIR, REPLACEMENT OR REFUND (AT THE OPTION OF SARA LEE CORPORATION) IS YOUR ONLY REMEDY UNDER THE ABOVE WARRANTY. SARA LEE CORPORATION SHALL NOT BE LIABLE FOR ANY OTHER INCIDENTAL, CONSEQUENTIAL OR INDIRECT COSTS, EXPENSES OR DAMAGES.

NO OTHER WARRANTY, WRITTEN OR ORAL, IS AUTHORIZED BY SARA LEE CORPORATION. ALL IMPLIED WARRANTIES, INCLUDING, BUT NOT LIMITED TO, THE IMPLIED WARRANTIES OF MERCHANTABILITY AND FITNESS FOR A PARTICULAR PURPOSE, ARE LIMITED TO THE DURATION OF THE APPLICABLE WRITTEN WARRANTY ABOVE.

Some states do not allow limitations on how long an implied warranty lasts, and some states do not allow the exclusion or limitation of incidental or consequential damages, so the above limitations and exclusions may not apply to you. This warranty gives you specific legal rights, and you may also have other rights which may vary from state to state.

¹ Read the instructions enclosed with your SENSEO unit carefully.

Manufactured for:

Sara Lee
3500 Lacey Road
Downers Grove, IL 60515


Call 1-866-4 Senseo (1-866-473-6736) or visit our website: www.senseo.com

SENSEO® is a registered trademark of Sara Lee/DE N.V. when used for coffee pods
©2009 Sara Lee Corporation







 100% recycled paper
100% papier recyclé

www.senseo.com

4222.200.0290.1



Free Manuals Download Website

<http://myh66.com>

<http://usermanuals.us>

<http://www.somanuals.com>

<http://www.4manuals.cc>

<http://www.manual-lib.com>

<http://www.404manual.com>

<http://www.luxmanual.com>

<http://aubethermostatmanual.com>

Golf course search by state

<http://golfingnear.com>

Email search by domain

<http://emailbydomain.com>

Auto manuals search

<http://auto.somanuals.com>

TV manuals search

<http://tv.somanuals.com>