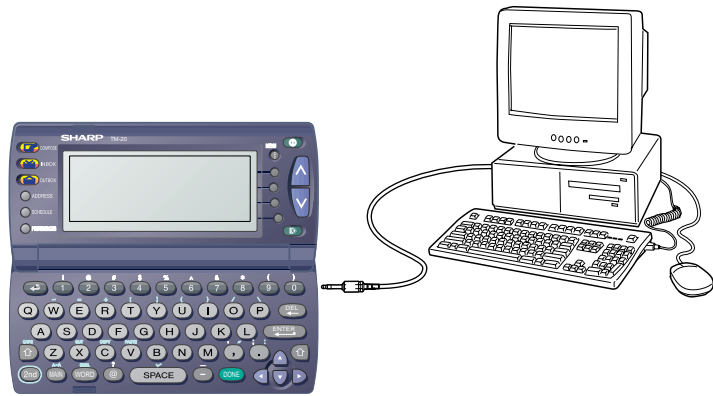


SHARP®

TM-20 PC Interface Software User's Guide



98LT(TINSE1323PCZZ)
OLY85EW000610
85-EW00-061078
PRINTED IN CHINA

What Does PC Link Do?

- Backup** Back up all TM-20 data to your PC
- Restore** Restore backup file to your TM-20
- Address Utility** Type new Address entries on your PC and then transfer them to your TM-20.

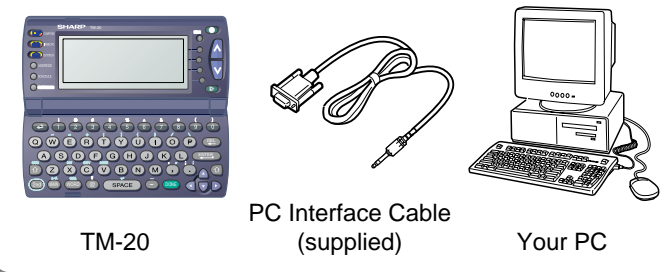
System Requirements

- * Windows 98, Windows 95, Windows NT4.0
- * IBM-compatible 486 or Pentium processor (33MHz or greater clock speed)
- * 8MB free hard disk space
- * 16MB RAM available
- * VGA monitor of better
- * Microsoft® Mouse or compatible Pointing Device
- * 3.5" disk drive
- * One available serial port with D-sub 9-pin connector

Before You Begin

Connecting Your TM-20 to Your PC

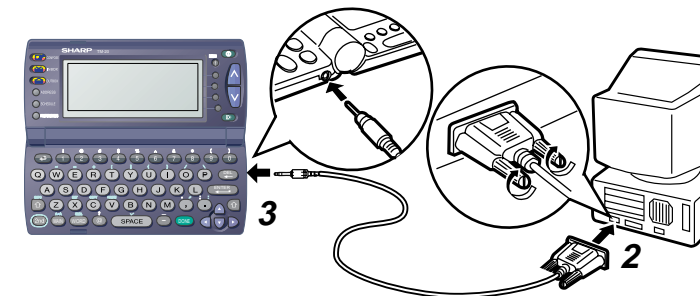
Requirements



1. First turn off your PC and TM-20 before connecting or disconnecting the PC interface cable.
2. Connect the standard 9-pin connector of the PC interface cable to one of the COM Ports on your PC.

Note:

You will need to purchase an adaptor if you wish to use a COM Port with a 25-pin connector.



3. Connect the other end of the PC interface cable to the PC interface connector of your TM-20.

Installing

1. Insert the PC Interface Software disk into your disk drive.
2. Click on the Windows [Start] button and then click [Run].
3. Type **a:1Setup.exe** (using the drive letter of your disk drive) and click on the [OK] button. A series of screens will be presented.
4. Follow the on-screen instructions.

Note:

The Select Program Folder screen determines the folder that is selected when you access the TM-20 PC Interface program group by clicking [Programs] in the [Start] menu. By default, the folder is named "PC Interface Software for Sharp TM-20". Changing the name is not recommended.

When installation is complete, a set of applications named **PC Interface Software for Sharp TM-20** will have been created. You can access these applications using Windows [Start]-[Programs]-[PC Interface Software for Sharp TM-20].

Getting Started

PC Interface Software Main Screen

To access the PC Interface Software for Sharp TM-20 main screen, click the Windows [Start] button, select [Programs] and then click [PC Interface Software for Sharp TM-20].



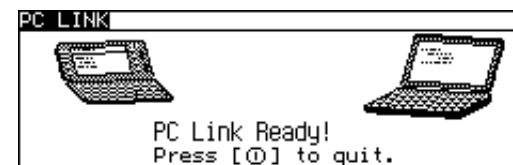
All TM-20 PC Interface operations can be accessed from the Main Screen.

Placing the TM-20 in PC Link Mode

When transferring data using the PC Interface Software, place the TM-20 in PC Link mode after first making sure that the TM-20 is properly connected to your PC.

TM-20 procedure

1. Press POWER Key (⏻) to turn on the power.
 2. Press (MAIN) in the lower left corner.
 3. Select PC Link (use ▲, ▼, ◀ and ▶ key in the lower right corner).
 4. Press (ENTER).
- When the following screen appears, the TM-20 is ready for PC Link.



Setting COM Port Options

After placing the TM-20 in PC Link mode, click [Option] on the Main Screen to open the Communication Port (COM Port) options window. When you click [Auto Detect], an appropriate COM Port will automatically be selected. When the appropriate port is selected, click [OK].

Backup and Restore

Making a Backup

1. Connect your TM-20 to your PC and place the TM-20 in PC Link mode. Refer to "Placing the TM-20 in PC Link Mode" on this Guide.
2. Click [Backup] on the Main Screen.



3. The TM-20's PC Interface Software will automatically fill in the Backup Filename field using today's date. You can retype the file name or select the file by clicking [Browse].
4. Click [NEXT].
5. A confirmation screen will appear. Click [Next] to start the backup process.

Note:

If you click [Cancel], the backup process will stop and return you to the Main Screen.

Restoring a Backup

Restoring data from the backup file on your PC will completely replace all the data in your TM-20 with the contents of the PC's backup file. Because the data in your TM-20 is completely deleted at the beginning of the restoration process, you cannot stop the process midway if you change your mind.

Before restoring from a backup file it is a good idea to perform a secondary backup (in case your original backup is damaged).

1. Connect your TM-20 to your PC and place the TM-20 in PC Link mode.
2. Click [Restore] on the Main Screen.
3. Click [Browse] and select the ".sbk" file you want to restore.
4. Click [NEXT].
5. A confirmation screen will appear. If you are sure you want to restore, click [NEXT]. Restoration will start and end automatically.

Address Utility - Data Input Tools

Click [Address Utility] on the Main Screen to open the Address Utility window.

Command Buttons

New button

Clears existing entries in Address Entry fields in preparation for a new entry. (Cursor will be located in the Last Name field.)

Save button

Places the data you have entered into the Waiting field.

Address Entry fields

Waiting field

Queues data waiting to be transferred to your TM-20.

Scroll bar

Scrolls the Waiting field from right to left (top to bottom) for easier viewing.

Option button

Opens the Communication Port (COM Port) options window.

Delete button

Deletes selected data from the Waiting field.

Send button

Transfers the data in the Waiting field to your TM-20.

Done button

Closes this window.

Entering Address

- Pressing [New] opens a blank form for creating a new entry.
- Enter the following new Address entry:

Last Name	Jones
First Name	Pat
Company	SHARP CORPORATION
Title	Supervisor
Work#	201-654-6546
FAX#	201-654-6547
E-mail1	Jpat@sharpsec.com

- When you have finished entering the information, click [Save]. The data you have entered will appear in the Waiting field.

Note:

The [Save] function cannot be used if both Last Name and First Name fields are blank.

Address Utility - Data Input Tools

Editing Waiting Data

You can edit Waiting items before you send them to the TM-20.

- First make sure that no entry is in any of the Address Entry fields. These fields should all be blank.
- In the Waiting field, select the item you want to edit and then double-click. The item you have selected will return to the Address Entry field.
- After you are finished making changes, click [Save] to update the Waiting item.

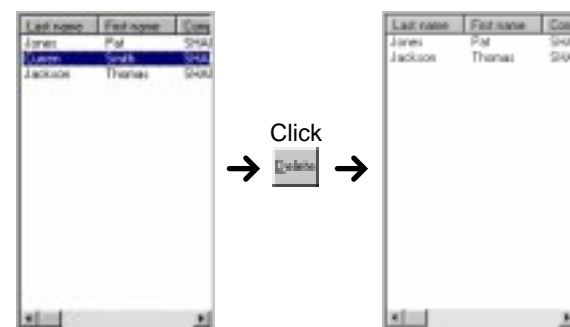
Note:

- If you double-click on a piece of data in the Waiting field while data is in any of the Address Entry fields, the data in the Address Entry fields will disappear.

Deleting Waiting Data

You can delete items from the Waiting field.

- To delete single items, select the item from the Waiting field and click [Delete].
- To delete multiple items, press Control while clicking each item in the Waiting field, then click [Delete].
- To delete a contiguous block of items, select the first item, press and hold the Shift key while selecting the last item to delete in the list. Then click [Delete].



Transferring Waiting Data

- Connect your TM-20 to your PC and place the TM-20 in PC Link mode. Refer to "Placing the TM-20 in PC Link Mode" in this Guide.
- On your PC, open the Address Utility window.
- Make sure that the TM-20 is in PC Link mode, then click [Send] to start the data transfer.
- When the data transfer is complete, a Transfer Complete message will appear on your PC. Items which have been transferred will be deleted from the Waiting field.

Appendix

Q & A

- Q:** Can I make entries on my TM-20 and send them to my PC and then edit them using the Address Utility?
- A:** No. You can only send data from your PC to your TM-20.
- Q:** If I turn off my PC with data remaining in the Waiting field, will the data be kept?
- A:** Yes. Data remaining in the Waiting field will not be lost if you turn off your PC. When you restart your PC, you will see the data remaining in the Waiting field, and you can continue data entry or data transfer. Any entries in the Address Entry fields will, however, be lost if you turn off your PC.
- Q:** Even when I select [Auto Detect] on the COM Port setting window, an error message appears and no COM Port is selected. What should I do?
- A:** If you are using a notebook PC, check BIOS and set the port to the serial port. There are cases when a port cannot be selected automatically even if BIOS is set correctly. In such a case, you must select an available port manually.

Customer Support

www.sharp-usa.com	Sharp Web Site Information and FAQs
1-630-378-3590	Sharp Customer Assistance Center (7am to 7pm CST M-F)

Free Manuals Download Website

<http://myh66.com>

<http://usermanuals.us>

<http://www.somanuals.com>

<http://www.4manuals.cc>

<http://www.manual-lib.com>

<http://www.404manual.com>

<http://www.luxmanual.com>

<http://aubethermostatmanual.com>

Golf course search by state

<http://golfingnear.com>

Email search by domain

<http://emailbydomain.com>

Auto manuals search

<http://auto.somanuals.com>

TV manuals search

<http://tv.somanuals.com>