

# SONY



# Guide to Sony 800MHz Wireless Microphones

*Systems Configurations for Professional Camcorders*



by Sony Professional Audio  
& Video Acquisition Group

## -Table of Contents -

|   |            |
|---|------------|
| <b>Overview of Sony Wireless Guide .....</b>                  | <b>1-4</b> |
| Configuration #1 WRR-855A/810A UHF Diversity Tune.....        | 5          |
| Configuration #2 Single WRR-855A / 810A / 805A UHF Tuner .... | 6, 7       |
| Configuration #3 WRR-855A UHF Diversity Tuner .....           | 7          |
| Configuration #4 WRR-855A UHF Diversity Tuner .....           | 8          |
| Sony Mounting Standards.....                                  | 9          |
| Optional Mounting Hardware & Accessories .....                | 9          |
| Portable UHF Tuners .....                                     | 10         |
| UHF Body-Pack Transmitters .....                              | 11         |
| Handheld UHF Transmitters .....                               | 12         |
| Suggested Application Packages .....                          | 13         |
| Frequency Selection and Coordination Chart .....              | 15-18      |
| Wireless Optional Accessories - Sales Models .....            | 19-21      |
| Camcorder / Wireless Microphone Configuration Chart .....     | 22-24      |

## How to specify a complete wireless system:-Overview

1. Select a suitable wireless receiver for the camcorder.
  - Use Overview of Camcorders for Wireless as help (Pages 1-4)
  - Use Suggested Applications Packages as Guide (Pg. 13)
  - Use Camcorder / Wireless Microphone Configuration Chart as a guide. (Pg. 22-24)
  - Select wireless receiver and transmitter using Wireless Product overview as a guide (Pg. 10-12)
  
2. Select the required mounting accessories
  - Use the Configuration #1 to #4 as guide (Pg. 5-9)
  - Select optional accessories using the tables on (Pg. 8, 9, 19-21)
  
3. Select the channel allocation.

Since wireless use is a secondary use of the spectrum it is necessary to choose operating frequencies not in (primary) use in a given area. If it is desired to use multiple wireless system at once, it is recommended that the user consult the Regional Audio Manager for help in choosing channels.

- Use Frequency Selection and Allocation Chart as first guide. (Pg. 15)
- Use Frequency Selection and Allocation Chart as a more detailed guide (Pg.16-18)

# OVERVIEW OF CAMCORDERS FOR WIRELESS:

## Summary of Sony Camcorders and Wireless Capability:

### 1A. Sony Digital Camcorders with Built-in Wireless Slot

(Camcorder as shipped - See Page 5 of Wireless Guide for details)

| <u>Camcorder Model</u>                      | <u>Wireless Models</u> | <u>Second Wireless</u>                          |
|---|------------------------|---|
| DNW-7; DNW-9WS<br>DNW-90; DNW-90WS<br>DNV-5 | WRR-855A               | WRR-855A w/BTA-801<br>or WRR-810<br>or WRR-805A |

### 1B. Sony Digital Camcorders with Built-in Wireless Slot

(Camcorders retrofitted (w/QR-SDH) for Anton Bauer Ni-Cad Batteries)

See Page 5 of Wireless Guide for details.

| <u>Camcorder Model</u>                      | <u>Wireless Models</u> | <u>Second Wireless</u>                          |
|---|------------------------|---|
| DNW-7; DNW-9WS<br>DNW-90; DNW-90WS<br>DNV-5 | WRR-855A               | WRR-855A w/BTA-801<br>or WRR-810<br>or WRR-805A |

### 2A. Sony Digital Camcorders

(Camcorders as shipped. - See Page 6 of Wireless Guide for details.)

| <u>Camcorder Model</u>  | <u>Wireless Models</u>                           | <u>Second Wireless</u> |
|---|--|------------------------|
| DVW-700; DVW-700WS<br>DVW-707; DVW-709WS<br>DVW-790WS<br>HDW-700(A)<br>HDW-F900 | WRR-855A w/BTA-801<br>or WRR-810A<br>or WRR-805A | No Provision           |

### 2B. Sony Digital Camcorders

(Camcorders retrofitted (w/QR-SDH) for Anton Bauer Ni-Cad Batteries.)

See Page 6 of Wireless Guide for details

| <u>Camcorder Model</u>                       | <u>Wireless Models</u>                          | <u>Second Wireless</u> |
|--|---|------------------------|
| DVW-700; DVW-700WS<br>HDW-700(A)<br>HDW-F900 | WRR-855A w/BTA-801<br>or WRR-810<br>or WRR-805A | No Provision           |

## 2C. Sony Digital Camcorders

(Camcorders as shipped. - See Page 7 of Wireless Guide for details)

### Camcorder Model

DSR-500WS; DSR-300

### Wireless Models

WRR-855A w/CA-WR855

### Second Wireless

No Provision

## 2D. Sony Digital Camcorders

Camcorders retrofitted (w/QR-DSR) for Anton Bauer Ni-Cad Batteries  
See Page 9 of Wireless Guide for details

### Camcorder Model

DSR-500WS; DSR-300

### Wireless Models

WRR-855A w/BTA-801

### Second Wireless

No Provision

## 3A. Sony Analog Camcorders - BetacamSP

(Camcorder as shipped w/NP-1 battery box , or retro fitted w/BP-90 battery box)  
See Page 7 of Wireless Guide for details

### Camcorder Model

BVW-D600 / D-600WS  
BVW-400(A); BVW-300(A)  
BVW-200; BVV-5  
UVW-100B; PVV-3

### Wireless Models

WRR-855A w/BTA-801  
or WRR-810A  
or WRR-805A

### Second Wireless

No Provision

## 3B. Sony Analog Camcorders - BetacamSP

(Camcorder retrofitted with V-wedge mount (w/BKW-L601) for Li-Ion batteries.)  
See Page 6 of Wireless Guide for details

### Camcorder Model

BVW-D600 / D-600WS  
BVW-400(A); BVW-300A  
BVW-200; BVV-5  
UVW-100B; PVV-3

### Wireless Models

WRR-855A w/BTA-801  
or WRR-810A  
or WRR-805A

### Second Wireless

No Provision

## 3C. Sony Analog Camcorders - BetacamSP

(Camcorders retrofitted (w/QRSP-200A or QRSP-400A) for use with Anton Bauer  
Ni-Cad Batteries.)  
See Page 6 of Wireless Guide for details.

### Camcorder Model

BVW-D600 / D-600WS  
BVW-400(A); BVW-300(A)  
BVW-200; BVV-5  
UVW-100B; PVV-3

### Wireless Models

WRR-855A w/BTA-801  
or WRR-810A  
or WRR-805A

### Second Wireless

No Provision

## -Professional Camcorder/Wireless System Configuration Guide-

The following is a comprehensive guide for setting up the right Sony wireless system with your camcorder. All configurations shown represent all current Sony professional camcorders and all current Sony wireless microphone models. Here are a few easy steps to configuring the proper system. Together with the details provided in this guide, these should help you to select the proper wireless equipment for use with your camcorder.

In general, a diversity system tuner (such as the **WRR-855A**) is better for more demanding applications. Especially where distance, or a lot of motion is a consideration, since it will provide greater freedom from “dropouts” due to multi-path signals.

In most other applications (where the environment is more predictable or where distance is not a factor), models such as the **WRR-810A** and **WRR-805A** will work very well and will provide a more cost-effective solution.

In any case, the choice of a system is based on the following criteria:

- A) Budget
- B) Size and weight requirements
- C) Application requirements (lavaliere or hand-held microphone) &
- D) Working distance (RF output between 5mW and 50mW)

**\*Note: Any Sony 800MHz transmitter can be used with any model Sony 800MHz receiver, as long as they are frequency matched (\*See Frequency Selection.)**

Please use the following as a guideline for determining your system’s requirements:

- 1) First, look at your camera: Is it a consumer model or broadcast model? What type of battery mounting system does it have (V-wedge, NP-1, BKW-L601)? Does it have an accessory DC power output? What type of audio connections does it have?

-This will help you determine which wireless models are directly compatible.

- 2) What mounting hardware comes with, or is available (optionally) for your camcorder?

-This will determine what (if any) additional hardware or accessories you will need to use a wireless system with your camcorder.

- 3) What is your application? (ENG, Broadcast Production, Event Videography, etc...?)

-This will determine which is the right wireless system for you, once you have decided your overall direction (\*See Suggested Application Systems). Certainly, budget may also be a consideration. That is why Sony has a wide selection of wireless components for every application and budget.

**Configuration # 1: WRR-855A/810A UHF Diversity Tuners**

|                                    |
|------------------------------------|
| (Betacam SX drop-in configuration) |
| <b>Models:</b>                     |
| DNW-7                              |
| DNW-9WS                            |
| DNW-90                             |
| DNW-90WS                           |
| DNV-5 (dockable VTR)               |

Fig. 1



DNW-9WS, shown with WRR-855A (above) in breakaway. BPL-60 battery is mounted via "V"-mount to rear of camera. WRR-855A power and audio connections are automatically made via multi-pin connector inside camera slot.

Fig.2



DNW-9WS, shown with WRR-855A in same configuration (installed-rear angle view)

Fig. 3



DNW-9WS, shown with one WRR-855A installed in same configuration, plus a second WRR-855A mounted to rear with A-8278-057-A mount and BTA-801A adapter. WRR-855A power is via 4-pin DC connector (supplied with BTA-801) to camera accessory power jack (shown) and audio via 12" XLR to XLR connection (user supplied).

Fig.4



\*SX camcorder shown with internally mounted WRR-855A and WRR-810A mounted externally with the optional A-8278-057-A bracket.

Typical Package:

| Required part:                            | Qty |
|---|-----|
| WRR-855A (tuner)                          | 1   |
| Transmitter                               | 1   |
| <b>Option ( for 2<sup>nd</sup> tuner)</b> |     |
| A8278-057-A bracket <sup>1</sup>          | 1   |
| WRR-855A                                  | 1   |
| BTA-801 (ADAPTER)                         | 1   |
| Transmitter                               | 1   |

<sup>1</sup> The A8278-057-A bracket is supplied with all Digital Betacam and HDW-700A camcorders, as well as with the Optional BKW-L601

**Note:** As below in configuration # 2, an Anton Bauer battery adapter, with their optional ABWMKKIT bracket, may be added for mounting of an additional tuner with the above listed models. WRR-810A or WRR-805A may also be used as a second tuner with the existing bracket (plus X-0248-167-1 dual plate adapter for WRR-805A).

## Configuration #2: Single WRR-855A / 810A / 805A UHF Tuners

**Works with:** Camcorders equipped with a NP-1 box, BP-90 (DC-500 box) BKW-L601 bracket -or- Anton Bauer battery adapter

|   |   |
|---|---|
| <p><b>This configuration applies to the following models:</b></p> <p><b>Digital Betacam: Has Integrated Li-Ion Battery Mount (V-mount)</b></p> <p>(Supplied w/ A8278-057-A bracket)</p> <ul style="list-style-type: none"> <li>Option: DC-L1 and DC-L90 Sony NiCad Box w/ V-wedge Mounts</li> <li>Option: Anton Bauer QR-SDH Battery Mount w/ ABWMKKIT wireless adapter plate</li> </ul> <p><b>Models:</b></p> <p>DVW-700</p> <p>DVW-700WS</p> <p>DVW-707</p> <p>DVW-709WS</p> <p>DVW-790WS</p> | <p><b>This configuration applies to the following models:</b></p> <p><b>Betacam/Betacam SP: Supplied with NP-1 box</b></p> <ul style="list-style-type: none"> <li>Option: BKW-L601 Li-Ion Battery Bracket</li> </ul> <p>(Includes A8278-057-A wireless bracket)</p> <ul style="list-style-type: none"> <li>Option: Anton Bauer QRSP-200/400A Battery Mount with ABWMKKIT wireless adapter plate (*see below)</li> </ul> <p><b>Models:</b></p> <p>BVW-300/300A* (QRSP-200A w/ ABWMKKIT)</p> <p>BVW-400/400A* (QRSP-400A w/ ABWMKKIT)</p> <p>BVW-D600 (QRSP-400A w/ ABWMKKIT)</p> <p>BVW-D600WS (QRSP-400A w/ ABWMKKIT)</p> <p>UVW-100B (QRSP-200A w/ ABWMKKIT)</p> <p>DXC-D30/PVV-3* (QRSP-200A w/ ABWMKKIT)</p> <p>DXC-D35/PVV-3 (QRSP-200A w/ ABWMKKIT)</p> <p>BVV-5 (QRSP-200A w/ ABWMKKIT)</p> <p>(*discontinued models)</p> |
| <p><b>HD-CAM: Has Integrated LiIon Battery Mount (V-mount)</b></p> <p>(Supplied w/ A8278-057-A bracket)</p> <ul style="list-style-type: none"> <li>Option: DC-L1 and DC-L90 Sony Ni-Cad Mounts</li> <li>Option: Anton Bauer QR-SDH Battery Mount with ABWMKKIT wireless adapter plate</li> </ul> <p><b>Models:</b></p> <p>HDW-700</p> <p>HDW-700A</p> <p>HDW-F900</p>   |   |

\* A-8278-057-A may be required for some models. See Configuration Chart.

Fig. 5



WRR-855A shown inserted in BTA-801A adapter mounted to BVW-D600 or BVW-600WS (fitted with a BKW-L601 and supplied A-8278-057-A bracket). Battery is BPL-90. Power via camcorder 4 pin DC connector. (Supplied w/BTA-801). Audio connection is via user supplied 12" XLR-XLR cable.

Fig. 6



WRR-810A shown mounted to BVW-600WS with A-8278-057-A bracket. Battery is BPL-60. Power via WRR-810A internal "AA" batteries. Audio is via XLR connector to camcorder audio input (user supplied).

Fig. 7



WRR-805A shown mounted to BVW-600WS with supplied case on A-8278-057-A bracket and optional X-0248-167-1 plate adapter. Battery is BPL-60. Power via WRR-805A internal "AA" batteries. Audio is via optional K-1334 XLR connector to camcorder audio input.



Fig. 8



WRR-855A inserted into BTA-801 adapter and mounted to a BVW-600WS via the NP-1 battery box. Power is provided via a 4-pin DC connector on camcorder (cable supplied with BTA-801). A WRR-810A or WRR-805A may also be mounted to the NP-1. The WRR-805A also requires the optional X-0248-167-1 dual bracket.

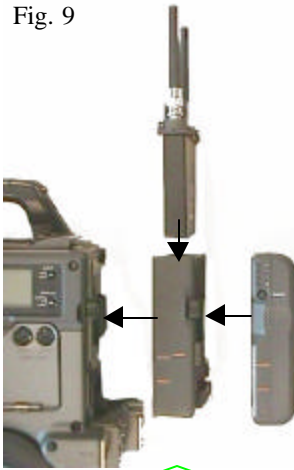
Typical package:

| Required part                                      | QTY |
|--|-----|
| WRR-855A, WRR-810A or WRR-805A                     | 1   |
| BTA-801 (for WRR-855A only)                        | 1   |
| * Optional X-0248-167-1bracket (for WRR-805A only) | 1   |
| * Transmitter                                      | 1   |

### Configuration #3: WRR-855A UHF Diversity Tuner

**Works with:** DVCAM models w/ CA-WR855 (optional adapter), or \*Anton Bauer QR-DSR optional adapter with ABWMKKIT wireless adapter plate.

Fig. 9



DVCAM/CAWRR-855A ass'ly shown in breakout with BPL-60A battery

Fig. 10



DVCAM/CAWR-855A (Shown assembled)

Fig. 11



DVCAM/CAWR-855A Shown assembled (rear angle)

| DVCAM Models:              |
|----------------------------|
| DSR-500WS                  |
| DSR-300 (A)                |
| DSR-200(/A) <sup>1 2</sup> |
| DSR-130WS <sup>2</sup>     |

\* A WRR-810A or WRR-805A may also be mounted to DVCAM models. WRR-810A requires the use of the optional A-8278-057-A bracket. The WRR-805A also requires this, plus the X-0248-167-1 dual bracket. These may not be mounted in addition to the CA-WR855 adapter box, as this leaves no additional space on the rear of the camcorder to mount the A-8278-057-A bracket.

Typical Package:  
(DSR-300 / 500WS)

| Required Part | QTY |
|---------------|-----|
| WRR-855A (ch) | 1   |
| CA-WR855      | 1   |
| *Transmitter  | 1   |

<sup>1</sup> Requires DABK-L201 adapter

<sup>2</sup> Supplied with NP-1 box. Requires optional BTA-801 adapter.

## Configuration # 4 WRR-805A UHF Tuner

**Works with:** Any consumer camcorder. Mount via supplied case/mount and 1/8" stereo mini-plug connector. For camcorder models using the A-8278-057-A or BKW-L601 bracket, the WRR-805A may be mounted using an optional, dual mounting adapter (X-0248-167-1).

Fig. 12



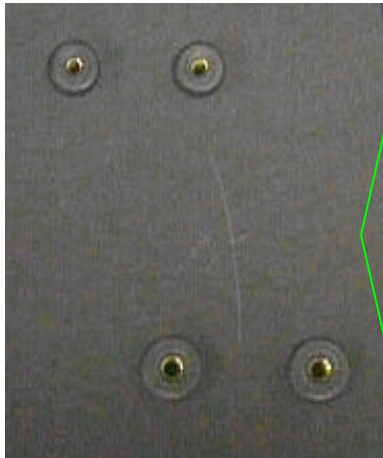
The **WRR-805A** Tuner shown mounted to a DCR-VX100 camcorder. Using a locking Velcro strap, mounting to the camcorder is very easy. The mount also rotates to facilitate the proper angle for reliable reception.

Fig. 13



Balanced mic/line inputs 1 & 2 (left) and 4-pin DC connector (right) on back of DSR-500 camcorder. Standard connectors on all Broadcast model Sony camcorders BETACAM, BetaSP, Digital Beta, HDCAM, DV (located opposite side on some models).

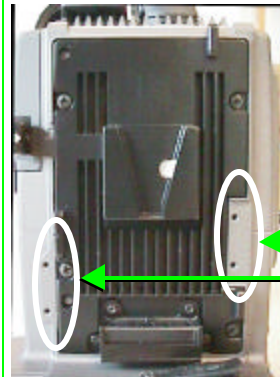
## Sony Wireless Mounting Standards



The **"4-hole"** mount is used by several Sony professional camcorder bracket systems, including:

- A-8278-057-A (included with: BKW-L601, BKW-L201, BKW-L403)
- X-0248-167-1
- BTA-801
- NP-1
- DC-500
- Anton Bauer QR-SDH or QR-DSR with ABWMK-KIT

Fig. 14



The **"V-Wedge"** mount is used by:

- CA-WR855 (for DSR-300 & 500 *only*)

The 4 rear-mounting screw holes will allow attachment of the A-8278-057-A bracket, alternatively.

**Anton Bauer Adapter System** (for use with compatible Anton Bauer NiCad batteries).

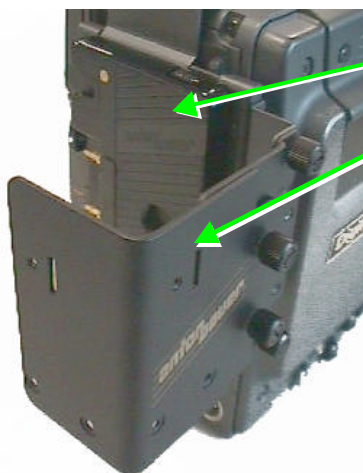


Fig. 15

**Anton Bauer QR-SDH** battery adapter shown with **ABWMK-KIT** mounted. The ABWMK-KIT comes supplied with a side mount and rear-mount plate adapter. These are both configured like the 4-hole mounting system above and allows mounting of the BTA-801, WRR-810A or X-0248-167-1 mounting adapter.



Fig. 16

**Anton Bauer QR-SDH** Shown again with just the side plate portion of the ABWMK-KIT. This side plate has three screw positions for mounting at various distances from the battery.

**\*Note:** The BTA 801A may be mounted to either of these two plates. However, the user will need to provide a slightly longer DC cable, as the one supplied with the BTA-801A

# Optional Mounting Hardware & Accessories

**X-0248-167-1 Dual Mount**



Will mount 1 or 2 WRR-805As (screws supplied) to a camcorder supplied with an NP-1, DC-500 or an A-8278-057-A bracket. The clip on back of WRR-805A case slides on.

**A-8278-057-A Mounting Bracket.**



For mounting of any Sony UHF portable tuner (with tuner supplied hardware shown) to most Sony professional camcorder models. Included with BKW-L601 battery mount.

**CA-WR855 Adapter.**



Using the "V" wedge mount system allows WRR-855A to be mount to DVCAM models and provides power and audio connections to/from the camcorder

**BTA-801 Adapter.**



Allows WRR-855A to be mounted to Sony camcorders equipped with an A-8278-057-A or NP-1, DC-500

**NP-1 Box**



Battery case/ mount. Supplied with Betacam, Betacam SP and some DVCAM models. Allows mounting of BTA-801A, WRR-810A or X-0248-167-1 bracket

**DC-500 Box**



**For the BP-L90 battery.** Optional battery case/mount for Betacam, Betacam SP and some DVCAM models. Allows mounting of BTA-801A, WRR-810A or X-0248-167-1 bracket

**Supplied Hardware.**



Top Piece



Bottom Piece

Included with the BTA-801A and WRR-810A. Mounts to 4-hole system on NP-1, A-8278-057-A, etc... Clips on the BTA-801A & WRR-810A insert into these.

**K-1334 Adapter Cable**



Converts the locking 1/8" mini-plug output of WRR-805A to balanced male XLR. This allows the WRR-805A to be connected to any professional camcorder.

**WRR-805A Case / mount**



(supplied accessory). Main case (left) can be mounted to optional dual bracket. Detached Velcro strap (right) allows mounting to handle of consumer camcorders.

## Anton Bauer Battery Adapters/Brackets \*

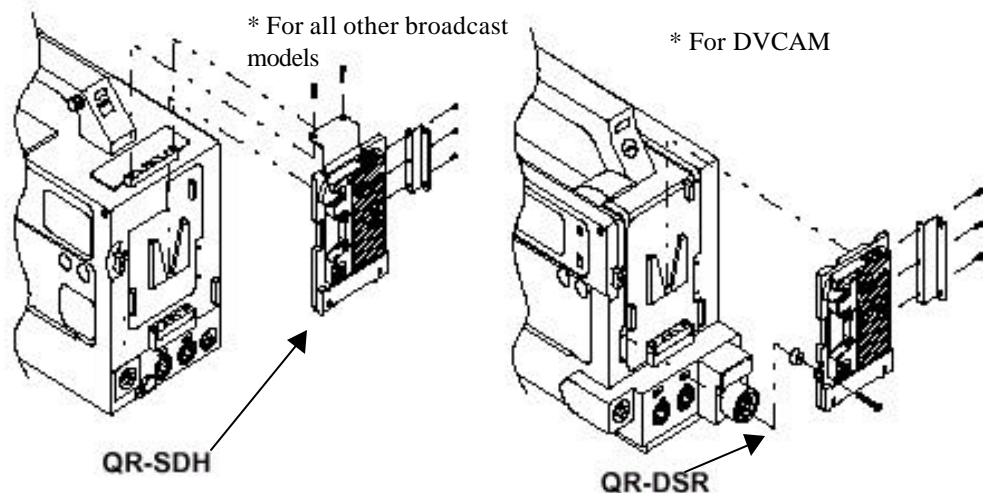


Fig. 16

\* Illustration shown provided by Anton Bauer

# Portable UHF Tuners

## WRR-855A (CH) Diversity UHF Tuner



- Diversity UHF synthesized tuner (94 channels)
- LCD display of status (AF, RF, CH, GROP, battery)
- Fits directly into Betacam SX camcorders
  - Returns audio back to camcorder
  - Transmits display information to SX model viewfinder
- Fits most Sony broadcast camcorders with BTA-801 or CA-WR855 adapter
- Receives power from camera:
  - SX models directly via multi-pin connector
  - DVCAM Via CA-WRR855
  - All other models via BTA-801 adapter box (4-pin accessory camera power)
- Available for channels 64/65, 66/67 & 68/69

## WRR-810A (CH) UHF Tuner



- UHF synthesized tuner (94 channels)
- LCD display of status (AF, RF, CH, GROP, battery)
- Fits most Sony broadcast camcorders with:
  - NP-1
  - BBKW-L601
  - DSBK-201
  - BKW-L403, or
  - Anton Bauer QRD-700
- Receives power from camera via 4-pin DC accessory output
- Balanced XLR audio out plugs into camcorder mic input
- Available for channels 64/65, 66/67 & 68/69

## WRR-805A UHF Non-Diversity Tuner



- Light-weight and low-cost
- UHF synthesized tuner (94 channels)
- LCD display of status (AF, RF, CH, GROP, battery)
- Fits most Sony consumer / prosumer camcorders via easy Velcro® strap-mount (mounts to camcorder handle).
- 6 hours of continuous power (2-“AA” alkaline batteries).
- Audio output via balanced 1/8” mini-jack or via optional XLR adapter cable.
- Variable headphone monitor output
- Optional balanced XLR audio connecting cable plugs into camcorder audio input
- Available for channels 64/65, 66/67 & 68/69

# UHF Transmitter Options:

## UHF Body-Pack Transmitters :

### WRT-805A (CH)



- **Low-cost**
- **Light weight**
- **10mW output**
- **6 hrs w/ 1 “AA” batteries**
- **Channels: 64/65, 66/67 & 68/69**

- **Accepts:**
  - ECM-121BMP- Same as above with short cord.
  - ECM-44BMP- Omni lav. General purpose
  - ECM-166BMP- Uni lavalier. Instrumental/vocal use
  - ECM-77BMP- Omni lavalier. High-quality vocal/instrumental
  - ECM-310BMP- Headset. Vocal/announcer

### WRT-822A (CH)



- **Sturdy and light-weight magnesium-alloy case**
- **10mW RF output**
- **8 hrs w/2 “AA” batteries**
- **Channels 64/65, 66/67 & 68/69**

- **Accepts:**
  - ECM-44BC Omni lav. General purpose
  - ECM-55BC Omni lav. General Purpose
  - ECM-66BC Uni lav. Instrumental/vocal use
  - ECM-166BC Uni lav. Instrumental/vocal use
  - ECM-77BC Omni lav. High-quality vocal/instrumental
  - ECM-310BC Headset. Vocal/announcer
  - ECM-350BC Headset. Vocal/announcer
  - EC-1.5CF 1.5m Microphone adapter cable

### WRT-860A (CH)



- **Rugged, all-metal case**
- **Ultra-compact, lightweight**
- **20mW RF output**
- **6 hrs. of continuous operation w/2 “AA” batteries**
- **Channels 64/65, 66/67 & 68/69**

- **Accepts:**
  - ECM-44BC Omni lav. General purpose
  - ECM-55BC Omni lav. General Purpose
  - ECM-66BC Uni lav. Instrumental/vocal use
  - ECM-166BC Uni lav. Instrumental/vocal use
  - ECM-77BC Omni lav. High-quality vocal/instrumental
  - ECM-310BC Headset. Vocal/announcer
  - ECM-350BC Headset. Vocal/announcer
  - EC-1.5CF 1.5m Microphone adapter cable

## Hand-held UHF Transmitters:

### WRT-800A68



- Electret condenser element
- Designed for general purpose / speech applications
- Low-cost UHF transmitter
- 5mW RF output
- 12 hrs w/1 "AA" battery
- Channel 68/69

### WRT-807A (CH)



- High-quality dynamic element (same as F-780) for demanding vocal applications
- Rugged, all-metal construction
- Integrated LCD display of transmitter function
- Locking on/off switch
- 5 hours of continuous operation w/ single "AA" alkaline battery
- 10 mW RF output
- Available on Channels 64/65, 66/67 & 68/69

### WRT-867A(CH)/X



- High-quality dynamic hyper-cardioid element (same as F-780/X)
- For critical vocal applications
- 10mW RF output
- 4 hrs w/1 "AA" battery
- Available on Channels 64/65, 66/67 & 68/69

### WRT-808A (CH)



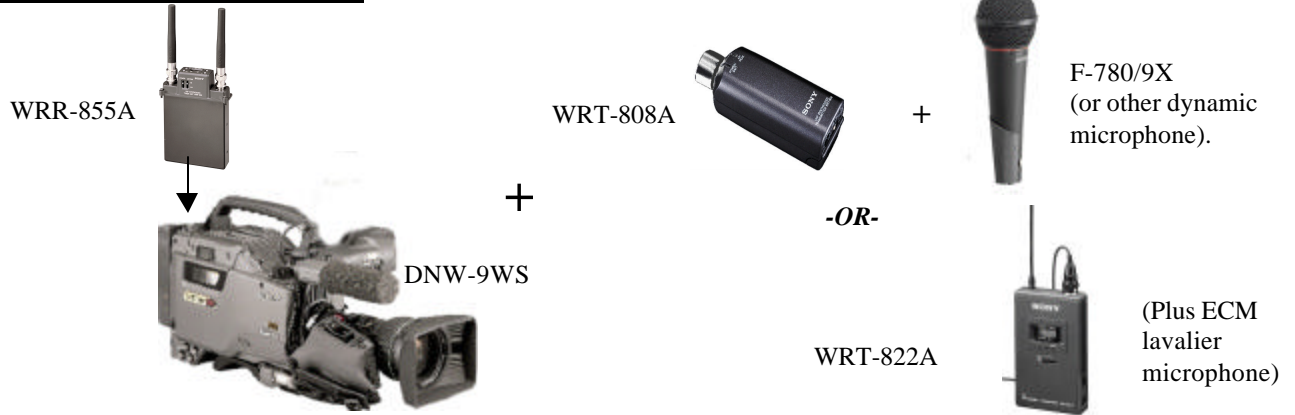
- Plug-on UHF transmitter for ENG applications
- Converts almost any mic\* to wireless operation
- Mic or line level (variable)
- 10mW/50mW RF output (switchable)
- 4 hrs continuous operation w/2 "AA" batteries
- Available on Channels 64/65, 66/67 & 68/69

#### **\*Works with:**

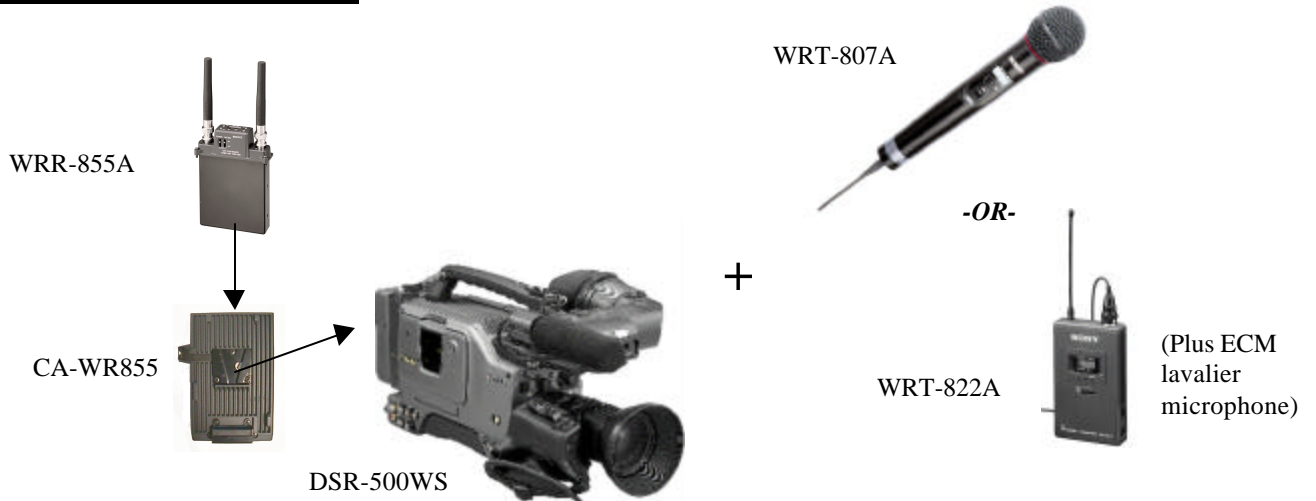
Any low-impedance XLR-balanced, non-phantom powered microphone or balanced, line-level source

## Suggested Application Packages

### Package #1 News/ENG



### Package #2 Production



### Package #3 Event Videography



(Page intentionally left blank)





# Frequency Selection and Coordination Charts

## **\*A Note about Frequency Selection –**

Sony's wireless systems operate across **6 TV** channels (64-69). Each system operates across a single pair of these channels: **64** operates on 64 & 65; **66** operates on 66 & 67; and **68** operates on 68 & 69. Each of these systems is tunable to any of 47 frequencies on each TV channel. After each model number is the designation (CH). This refers to 64, 66 or 68 versions of this model.

**Make sure to match the order frequency number (64, 66 or 68) on *both* the transmitter *and* receiver, as these each have a channel designation** (e.g.- WRT822A66 with WRR-855A66). Choice of order frequency is arbitrary, unless otherwise determined by a particular requirement (such as available frequencies in a given location. eg.: A TV station operating on channel 68 in your area would cause potential interference for wireless systems. However, channel 69 should still function properly, as should other channels. If you have any questions regarding order frequency selection, please consult your Regional Audio Account Manager.

- Features and specifications are subject to change without notice

| <b>GROUP Channels<br/>00 64/65</b>   |    |           |   |    |           |  |    |           |    |    |           |
|--|----|-----------|---|----|-----------|--|----|-----------|----|----|-----------|
| CH   |    | FREQUENCY | CH  |    | FREQUENCY | CH   |    | FREQUENCY | CH |    | FREQUENCY |
| 64   | 01 | 770.125   | 64  | 25 | 773.125   | 65   | 01 | 776.125   | 69 | 25 | 779.125   |
| 64   | 02 | 770.250   | 64  | 26 | 773.250   | 65   | 02 | 776.250   | 69 | 26 | 779.250   |
| 64   | 03 | 770.375   | 64  | 27 | 773.375   | 65   | 03 | 776.375   | 69 | 27 | 779.375   |
| 64   | 04 | 770.500   | 64  | 28 | 773.500   | 65   | 04 | 776.500   | 69 | 28 | 779.500   |
| 64   | 05 | 770.625   | 64  | 29 | 773.625   | 65   | 05 | 776.625   | 69 | 29 | 779.625   |
| 64   | 06 | 770.750   | 64  | 30 | 773.750   | 65   | 06 | 776.750   | 69 | 30 | 779.750   |
| 64   | 07 | 770.875   | 64  | 31 | 773.875   | 65   | 07 | 776.875   | 69 | 31 | 779.875   |
| 64   | 08 | 771.000   | 64  | 32 | 774.000   | 65   | 08 | 777.000   | 69 | 32 | 780.000   |
| 64   | 09 | 771.125   | 64  | 33 | 774.125   | 65   | 09 | 777.125   | 69 | 33 | 780.125   |
| 64   | 10 | 771.250   | 64  | 34 | 774.250   | 65   | 10 | 777.250   | 69 | 34 | 780.250   |
| 64   | 11 | 771.375   | 64  | 35 | 774.375   | 65   | 11 | 777.375   | 69 | 35 | 780.375   |
| 64   | 12 | 771.500   | 64  | 36 | 774.500   | 65   | 12 | 777.500   | 69 | 36 | 780.500   |
| 64   | 13 | 771.625   | 64  | 37 | 774.625   | 65   | 13 | 777.625   | 69 | 37 | 780.625   |
| 64   | 14 | 771.750   | 64  | 38 | 774.750   | 65   | 14 | 777.750   | 69 | 38 | 780.750   |
| 64   | 15 | 771.875   | 64  | 39 | 774.875   | 65   | 15 | 777.875   | 69 | 39 | 780.875   |
| 64   | 16 | 772.000   | 64  | 40 | 775.000   | 65   | 16 | 778.000   | 69 | 40 | 781.000   |
| 64   | 17 | 772.125   | 64  | 41 | 775.125   | 65   | 17 | 778.125   | 69 | 41 | 781.125   |
| 64   | 18 | 772.250   | 64  | 42 | 775.250   | 65   | 18 | 778.250   | 69 | 42 | 781.250   |
| 64   | 19 | 772.375   | 64  | 43 | 775.375   | 65   | 19 | 778.375   | 69 | 43 | 781.375   |
| 64   | 20 | 772.500   | 64  | 44 | 775.500   | 65   | 20 | 778.500   | 69 | 44 | 781.500   |
| 64   | 21 | 772.625   | 64  | 45 | 775.625   | 65   | 21 | 778.625   | 69 | 45 | 781.625   |
| 64   | 22 | 772.750   | 64  | 46 | 775.750   | 65   | 22 | 778.750   | 69 | 46 | 781.750   |
| 64   | 23 | 772.875   | 64  | 47 | 775.875   | 65   | 23 | 778.875   | 69 | 47 | 781.875   |
| 64   | 24 | 773.000   | 64  |    |           | 65   | 24 | 779.000   |    |    | 782.000   |
| <b>GROUP 11</b>  |    |           | <b>GROUP 12</b>   |    |           | <b>GROUP 13</b>  |    |           |    |    |           |
| CH   |    | FREQUENCY | CH  |    | FREQUENCY | CH   |    | FREQUENCY |    |    |           |
| 64   | 05 | 770.625   | 65  | 01 | 776.125   | 64   | 03 | 770.375   |    |    |           |
| 64   | 14 | 771.750   | 65  | 05 | 776.625   | 64   | 13 | 771.625   |    |    |           |
| 64   | 25 | 773.125   | 65  | 11 | 777.375   | 64   | 18 | 772.250   |    |    |           |
| 64   | 41 | 775.125   | 65  | 25 | 779.125   | 64   | 26 | 773.250   |    |    |           |
| 64   | 47 | 775.875   | 65  | 28 | 779.500   | 64   | 37 | 774.625   |    |    |           |
| 65   | 12 | 777.500   | 65  | 36 | 780.500   | 64   | 40 | 775.000   |    |    |           |
| 65   | 16 | 778.000   | 65  | 41 | 781.125   | 64   | 44 | 775.500   |    |    |           |
| 65   | 30 | 779.750   | 65  | 43 | 781.375   | 64   | 46 | 775.750   |    |    |           |
| 65   | 37 | 780.625   |   |    |           |  |    |           |    |    |           |
| 65   | 40 | 781.000   |   |    |           |  |    |           |    |    |           |
| 65   | 42 | 781.250   |   |    |           |  |    |           |    |    |           |
| 11-Channel Group. Use when both channels 65 & 65 are available   |    |           | 8-channel Group. Use when channel 64 is on air  |    |           | 8-channel Group. Use when channel 65 is on air   |    |           |    |    |           |
| <b>GROUP A1</b>  |    |           | <b>GROUP A2</b>   |    |           | <b>GROUP A3</b>  |    |           |    |    |           |
| CH   |    | FREQUENCY | CH  |    | FREQUENCY | CH   |    | FREQUENCY |    |    |           |
| 64   | 05 | 770.625   | 65  | 02 | 776.250   | 64   | 01 | 770.125   |    |    |           |
| 64   | 12 | 771.500   | 65  | 19 | 778.375   | 64   | 18 | 772.250   |    |    |           |
| 64   | 15 | 771.875   | 65  | 43 | 781.375   | 64   | 42 | 775.250   |    |    |           |
| 65   | 24 | 779.000   |   |    |           |  |    |           |    |    |           |
| 65   | 33 | 780.125   |   |    |           |  |    |           |    |    |           |
| For 19-Channel Group. Used in conjunction with tuners in other versions (66, 68) when <b>all</b> TV channels are available (64-69) |    |           | For 13-channel Group. Used in conjunction with tuners in other versions (66,68) when <b>all odd</b> numbered TV channels are available (65, 67, 69) |    |           | For 13-channel Group. Used in conjunction with tuners in other versions (66,68) when <b>all even</b> numbered TV channels are available (64, 66, 68) |    |           |    |    |           |

| <b>GROUP Channels</b>  |    |                  |   |    |                  |  |    |                  |           |    |                  |
|--|----|------------------|---|----|------------------|--|----|------------------|-----------|----|------------------|
| <b>00</b>  |    | <b>66/67</b>     |   |    |                  |  |    |                  |           |    |                  |
| <b>CH</b>  |    | <b>FREQUENCY</b> | <b>CH</b>   |    | <b>FREQUENCY</b> | <b>CH</b>  |    | <b>FREQUENCY</b> | <b>CH</b> |    | <b>FREQUENCY</b> |
| 66   | 01 | 782.125          | 66  | 25 | 785.125          | 67   | 01 | 788.125          | 67        | 25 | 791.125          |
| 66   | 02 | 782.250          | 66  | 26 | 785.250          | 67   | 02 | 788.250          | 67        | 26 | 791.250          |
| 66   | 03 | 782.375          | 66  | 27 | 785.375          | 67   | 03 | 788.375          | 67        | 27 | 791.375          |
| 66   | 04 | 782.500          | 66  | 28 | 785.500          | 67   | 04 | 788.500          | 67        | 28 | 791.500          |
| 66   | 05 | 782.625          | 66  | 29 | 785.625          | 67   | 05 | 788.625          | 67        | 29 | 791.625          |
| 66   | 06 | 782.750          | 66  | 30 | 785.750          | 67   | 06 | 788.750          | 67        | 30 | 791.750          |
| 66   | 07 | 782.875          | 66  | 31 | 785.875          | 67   | 07 | 788.875          | 67        | 31 | 791.875          |
| 66   | 08 | 783.000          | 66  | 32 | 786.000          | 67   | 08 | 789.000          | 67        | 32 | 792.000          |
| 66   | 09 | 783.125          | 66  | 33 | 786.125          | 67   | 09 | 789.125          | 67        | 33 | 792.125          |
| 66   | 10 | 783.250          | 66  | 34 | 786.250          | 67   | 10 | 789.250          | 67        | 34 | 792.250          |
| 66   | 11 | 783.375          | 66  | 35 | 786.375          | 67   | 11 | 789.375          | 67        | 35 | 792.375          |
| 66   | 12 | 783.500          | 66  | 36 | 786.500          | 67   | 12 | 789.500          | 67        | 36 | 792.500          |
| 66   | 13 | 783.625          | 66  | 37 | 786.625          | 67   | 13 | 789.625          | 67        | 37 | 792.625          |
| 66   | 14 | 783.750          | 66  | 38 | 786.750          | 67   | 14 | 789.750          | 67        | 38 | 792.750          |
| 66   | 15 | 783.875          | 66  | 39 | 786.875          | 67   | 15 | 789.875          | 67        | 39 | 792.875          |
| 66   | 16 | 784.000          | 66  | 40 | 787.000          | 67   | 16 | 790.000          | 67        | 40 | 793.000          |
| 66   | 17 | 784.125          | 66  | 41 | 787.125          | 67   | 17 | 790.125          | 67        | 41 | 793.125          |
| 66   | 18 | 784.250          | 66  | 42 | 787.250          | 67   | 18 | 790.250          | 67        | 42 | 793.250          |
| 66   | 19 | 784.375          | 66  | 43 | 787.375          | 67   | 19 | 790.375          | 67        | 43 | 793.375          |
| 66   | 20 | 784.500          | 66  | 44 | 787.500          | 67   | 20 | 790.500          | 67        | 44 | 793.500          |
| 66   | 21 | 784.625          | 66  | 45 | 787.625          | 67   | 21 | 790.625          | 67        | 45 | 793.625          |
| 66   | 22 | 784.750          | 66  | 46 | 787.750          | 67   | 22 | 790.750          | 67        | 46 | 793.750          |
| 66   | 23 | 784.875          | 66  | 47 | 787.875          | 67   | 23 | 790.875          | 67        | 47 | 793.875          |
| 66   | 24 | 785.000          | 66  |    |                  | 67   | 24 | 791.000          | 67        |    |                  |
| <b>GROUP 11</b>  |    |                  | <b>GROUP 12</b>   |    |                  | <b>GROUP 13</b>  |    |                  |           |    |                  |
| <b>CH</b>  |    | <b>FREQUENCY</b> | <b>CH</b>   |    | <b>FREQUENCY</b> | <b>CH</b>  |    | <b>FREQUENCY</b> |           |    |                  |
| 66   | 05 | 782.625          | 67  | 01 | 788.125          | 66   | 03 | 782.375          |           |    |                  |
| 66   | 14 | 783.750          | 67  | 05 | 788.625          | 66   | 13 | 783.625          |           |    |                  |
| 66   | 25 | 785.125          | 67  | 11 | 789.375          | 66   | 18 | 784.250          |           |    |                  |
| 66   | 41 | 787.125          | 67  | 25 | 791.125          | 66   | 26 | 785.250          |           |    |                  |
| 66   | 47 | 787.875          | 67  | 28 | 791.500          | 66   | 37 | 786.625          |           |    |                  |
| 67   | 12 | 789.500          | 67  | 36 | 792.500          | 66   | 40 | 787.000          |           |    |                  |
| 67   | 16 | 790.000          | 67  | 41 | 793.125          | 66   | 44 | 787.500          |           |    |                  |
| 67   | 30 | 791.750          | 67  | 43 | 793.375          | 66   | 46 | 787.750          |           |    |                  |
| 67   | 37 | 792.625          |   |    |                  |  |    |                  |           |    |                  |
| 67   | 40 | 793.000          |   |    |                  |  |    |                  |           |    |                  |
| 69   | 42 | 793.250          |   |    |                  |  |    |                  |           |    |                  |
| 11-Channel Group. Use when both channels 68 & 69 are available   |    |                  | 8-channel Group. Use when channel 68 is on air  |    |                  | 8-channel Group. Use when channel 69 is on air   |    |                  |           |    |                  |
| <b>GROUP A1</b>  |    |                  | <b>GROUP A2</b>   |    |                  | <b>GROUP A3</b>  |    |                  |           |    |                  |
| <b>CH</b>  |    | <b>FREQUENCY</b> | <b>CH</b>   |    | <b>FREQUENCY</b> | <b>CH</b>  |    | <b>FREQUENCY</b> |           |    |                  |
| 66   | 02 | 782.250          | 67  | 07 | 788.875          | 66   | 06 | 782.750          |           |    |                  |
| 66   | 24 | 785.000          | 67  | 33 | 792.125          | 66   | 32 | 786.000          |           |    |                  |
| 66   | 29 | 785.625          | 67  | 45 | 793.625          | 66   | 44 | 787.500          |           |    |                  |
| 67   | 16 | 790.000          |   |    |                  |  |    |                  |           |    |                  |
| 67   | 18 | 790.250          |   |    |                  |  |    |                  |           |    |                  |
| 67   | 39 | 792.875          |   |    |                  |  |    |                  |           |    |                  |
| For 19-Channel Group. Used in conjunction with tuners in other versions (64, 68) when <b>all</b> TV channels are available (64-69) |    |                  | For 13-channel Group. Used in conjunction with tuners in other versions (64,68) when <b>all odd</b> numbered TV channels are available (65, 67, 69) |    |                  | For 13-channel Group. Used in conjunction with tuners in other versions (64,68) when <b>all even</b> numbered TV channels are available (64, 66, 68) |    |                  |           |    |                  |

| <b>GROUP Channels</b>   |    |                  |   |    |                  |  |    |                  |           |    |                  |
|---|----|------------------|---|----|------------------|--|----|------------------|-----------|----|------------------|
| <b>00</b>   |    | <b>68/69</b>     |   |    |                  |  |    |                  |           |    |                  |
| <b>CH</b>   |    | <b>FREQUENCY</b> | <b>CH</b>   |    | <b>FREQUENCY</b> | <b>CH</b>  |    | <b>FREQUENCY</b> | <b>CH</b> |    | <b>FREQUENCY</b> |
| 68  | 01 | 794.125          | 68  | 25 | 797.125          | 69   | 01 | 800.125          | 69        | 25 | 803.125          |
| 68  | 02 | 794.250          | 68  | 26 | 797.250          | 69   | 02 | 800.250          | 69        | 26 | 803.250          |
| 68  | 03 | 794.375          | 68  | 27 | 797.375          | 69   | 03 | 800.375          | 69        | 27 | 803.375          |
| 68  | 04 | 794.500          | 68  | 28 | 797.500          | 69   | 04 | 800.500          | 69        | 28 | 803.500          |
| 68  | 05 | 794.625          | 68  | 29 | 797.625          | 69   | 05 | 800.625          | 69        | 29 | 803.625          |
| 68  | 06 | 794.750          | 68  | 30 | 797.750          | 69   | 06 | 800.750          | 69        | 30 | 803.750          |
| 68  | 07 | 794.875          | 68  | 31 | 797.875          | 69   | 07 | 800.875          | 69        | 31 | 803.875          |
| 68  | 08 | 795.000          | 68  | 32 | 798.000          | 69   | 08 | 801.000          | 69        | 32 | 804.000          |
| 68  | 09 | 795.125          | 68  | 33 | 798.125          | 69   | 09 | 801.125          | 69        | 33 | 804.125          |
| 68  | 10 | 795.250          | 68  | 34 | 798.250          | 69   | 10 | 801.250          | 69        | 34 | 804.250          |
| 68  | 11 | 795.375          | 68  | 35 | 798.375          | 69   | 11 | 801.375          | 69        | 35 | 804.375          |
| 68  | 12 | 795.500          | 68  | 36 | 798.500          | 69   | 12 | 801.500          | 69        | 36 | 804.500          |
| 68  | 13 | 795.625          | 68  | 37 | 798.625          | 69   | 13 | 801.625          | 69        | 37 | 804.625          |
| 68  | 14 | 795.750          | 68  | 38 | 798.750          | 69   | 14 | 801.750          | 69        | 38 | 804.750          |
| 68  | 15 | 795.875          | 68  | 39 | 798.875          | 69   | 15 | 801.875          | 69        | 39 | 804.875          |
| 68  | 16 | 796.000          | 68  | 40 | 799.000          | 69   | 16 | 802.000          | 69        | 40 | 805.000          |
| 68  | 17 | 796.125          | 68  | 41 | 799.125          | 69   | 17 | 802.125          | 69        | 41 | 805.125          |
| 68  | 18 | 796.250          | 68  | 42 | 799.250          | 69   | 18 | 802.250          | 69        | 42 | 805.250          |
| 68  | 19 | 796.375          | 68  | 43 | 799.375          | 69   | 19 | 802.375          | 69        | 43 | 805.375          |
| 68  | 20 | 796.500          | 68  | 44 | 799.500          | 69   | 20 | 802.500          | 69        | 44 | 805.500          |
| 68  | 21 | 796.625          | 68  | 45 | 799.625          | 69   | 21 | 802.625          | 69        | 45 | 805.625          |
| 68  | 22 | 796.750          | 68  | 46 | 799.750          | 69   | 22 | 802.750          | 69        | 46 | 805.750          |
| 68  | 23 | 796.875          | 68  | 47 | 799.875          | 69   | 23 | 802.875          | 69        | 47 | 805.875          |
| 68  | 24 | 797.000          |   |    |                  | 69   | 24 | 803.000          |           |    |                  |
| <b>GROUP 11</b>   |    |                  | <b>GROUP 12</b>   |    |                  | <b>GROUP 13</b>  |    |                  |           |    |                  |
| <b>CH</b>   |    | <b>FREQUENCY</b> | <b>CH</b>   |    | <b>FREQUENCY</b> | <b>CH</b>  |    | <b>FREQUENCY</b> |           |    |                  |
| 68  | 05 | 794.625          | 69  | 01 | 800.125          | 68   | 03 | 794.375          |           |    |                  |
| 68  | 14 | 795.750          | 69  | 05 | 800.625          | 68   | 13 | 795.625          |           |    |                  |
| 68  | 25 | 797.125          | 69  | 11 | 801.375          | 68   | 18 | 796.250          |           |    |                  |
| 68  | 41 | 799.125          | 69  | 25 | 803.125          | 68   | 26 | 797.250          |           |    |                  |
| 68  | 47 | 799.875          | 69  | 28 | 803.500          | 68   | 37 | 798.625          |           |    |                  |
| 69  | 12 | 801.500          | 69  | 36 | 804.500          | 68   | 40 | 799.000          |           |    |                  |
| 69  | 16 | 802.000          | 69  | 41 | 805.125          | 68   | 44 | 799.500          |           |    |                  |
| 69  | 30 | 803.750          | 69  | 43 | 805.375          | 68   | 46 | 799.750          |           |    |                  |
| 69  | 37 | 804.625          |   |    |                  |  |    |                  |           |    |                  |
| 69  | 40 | 805.000          |   |    |                  |  |    |                  |           |    |                  |
| 69  | 42 | 805.250          |   |    |                  |  |    |                  |           |    |                  |
| 11-Channel Group. Use when both channels 68 & 69 are available  |    |                  | 8-channel Group. Use when channel 68 is on air  |    |                  | 8-channel Group. Use when channel 69 is on air   |    |                  |           |    |                  |
| <b>GROUP A1</b>   |    |                  | <b>GROUP A2</b>   |    |                  | <b>GROUP A3</b>  |    |                  |           |    |                  |
| <b>CH</b>   |    | <b>FREQUENCY</b> | <b>CH</b>   |    | <b>FREQUENCY</b> | <b>CH</b>  |    | <b>FREQUENCY</b> |           |    |                  |
| 68  | 06 | 794.750          | 69  | 11 | 801.375          | 68   | 10 | 795.250          |           |    |                  |
| 68  | 20 | 796.500          | 69  | 22 | 802.750          | 68   | 21 | 796.625          |           |    |                  |
| 68  | 24 | 797.000          | 69  | 30 | 803.750          | 68   | 29 | 797.625          |           |    |                  |
| 68  | 40 | 799.000          | 69  | 36 | 804.500          | 68   | 35 | 798.375          |           |    |                  |
| 69  | 04 | 800.500          | 69  | 40 | 805.000          | 68   | 39 | 798.875          |           |    |                  |
| 69  | 17 | 802.125          | 69  | 43 | 805.375          | 68   | 42 | 799.250          |           |    |                  |
| 69  | 23 | 802.175          | 69  | 45 | 805.625          | 68   | 44 | 799.500          |           |    |                  |
| 69  | 47 | 805.875          |   |    |                  |  |    |                  |           |    |                  |
| For 19-Channel Group. Used in conjunction with tuners in other versions (64,66) when <b>all</b> TV channels are available (64-69) |    |                  | For 13-channel Group. Used in conjunction with tuners in other versions (64,66) when <b>all odd</b> numbered TV channels are available (65, 67, 69) |    |                  | For 13-channel Group. Used in conjunction with tuners in other versions (64,66) when <b>all even</b> numbered TV channels are available (64, 66, 68) |    |                  |           |    |                  |

## **WIRELESS OPTIONAL ACCESSORIES- SALES MODELS**

| <b>MODEL #</b>       | <b>DESCRIPTION</b>                              | <b>WORKS WITH MODELS:</b>   | <b>LIST PRICE</b> |
|----------------------|---|---|-------------------|
| <b>BTA-801</b>       | CAMCORDER ADAPTER FOR WRR-855A                  | <b>ALL BROADCAST MODEL CAMCORDERS</b> (MAY REQUIRE OPTIONAL BKW-L601 BATTERY ADAPTER OR ANTON BAUER EQUIVALENT) | \$500.00          |
| <b>AN-820A</b>       | ACTIVE ANTENNA                                  | ALL RACK-MOUNT TUNERS & DIVIDERS EXCEPT FOR WRR-800A/WRR-802A   | \$192.00          |
| <b>CA-WR855</b>      | DSR-300/500 CAMCORDER ADPTER FOR WRR-855A       | WRR-855A WITH DSR-300, AND DSR-500 CAMCORDERS ONLY  | \$475.00          |
| <b>EC.04CM</b>       | XLR MALE > SMC-9-4P ADAPTER CABLE               | WRR-810A  | \$44.00           |
| <b>EC-15CF</b>       | XLR FEMALE > SMC-9-4P ADAPTER CABLE             | WRT-820A, WRT-822A, WRT-860A  | \$65.00           |
| <b>ECM-121BMP</b>    | OMNI LAVALIER MIC                               | WRT-805A  | \$28.00           |
| <b>ECM-122BMP</b>    | OMNI LAVALIER MIC                               | WRT-805A  | \$28.00           |
| <b>ECM-166BC</b>     | UNI LAVALIER MIC                                | WRT-820A, WRT-822A, WRT-860A  | \$142.00          |
| <b>ECM-166BMP</b>    | UNI LAVALIER MIC                                | WRT-805A  | \$132.00          |
| <b>ECM-310BC</b>     | UNI HEADSET MIC                                 | WRT-820A, WRT-822A, WRT-860A  | \$105.00          |
| <b>ECM-310BMP</b>    | UNI HEADSET MIC                                 | WRT-805A  | \$105.00          |
| <b>ECM-350BC</b>     | UNI HEADSET MIC                                 | WRT-820A, WRT-822A, WRT-860A  | \$495.00          |
| <b>ECM-44BMP, BC</b> | OMNI LAVALIER MIC                               | <b>BMP-WRT-805A, BC-WRT-820A, WRT-822A, WRT-860A</b>  | \$168.00          |
| <b>ECM-55BC</b>      | OMNI LAVALIER MIC                               | WRT-820A, WRT-822A, WRT-860A  | \$285.00          |
| <b>ECM-66BC</b>      | UNI LAVALIER MIC                                | WRT-820A, WRT-822A, WRT-860A  | \$360.00          |
| <b>ECM-77BC</b>      | OMNI LAVALIER MIC                               | WRT-820A, WRT-822A, WRT-860A  | \$360.00          |
| <b>ECM-77BMP</b>     | OMNI LAVALIER MIC                               | WRT-805A  | \$345.00          |
| <b>GC-0.7MP/1</b>    | 1/8" MINIPLUG TO PHONE PLU ADAPTER CABLE        | WRT-805A  | \$55.00           |
| <b>K-1161</b>        | PHONE PLUG >SMC-9-4P ADAPTER CABLE              | ALL RACK-MOUNT TUNERS & DIVIDERS EXCEPT FOR WRR-800A/WRR-802A   | \$95.00           |
| <b>K-1314</b>        | 1/4 WAVE ANTENNAS (Pr.)                         | <b>ALL SONY RACK-MOUNT TUNERS</b>   | \$27.00           |
| <b>K-1324</b>        | SOLDERABLE 1/8" MINIPLUG                        | WRR-805A, WRT-805A  | \$24.00           |
| <b>K-1334</b>        | 1/8" LOCKING MINIPLUG TO XLR MALE ADAPTER CABLE | WRR-805A  | \$40.00           |
| <b>LCS-T805</b>      | GUITAR STRAP SOFT CASE                          | WRT-805A  | \$48.00           |
| <b>RK-800A</b>       | Rack-mount adapter kit                          | WRR-800A, WRR-802A  | \$37.00           |
| <b>SC-M800</b>       | CARRYING CASE                                   | FREEDOM PACKAGED SYSTEMS  | \$100.00          |

|                   |                                    |   |          |
|-------------------|------------------------------------|---|----------|
| <b>WBC-0.6B-P</b> | 50 OHM COAXIAL ANTENNA CABLE (.6M) | ALL RACK-MOUNT TUNERS & DIVIDERS EXCEPT FOR WRR-800A/WRR-802A | \$25.00  |
| <b>WBC-10B-5P</b> | 50 OHM COAXIAL ANTENNA CABLE (10M) | ALL RACK-MOUNT TUNERS & DIVIDERS EXCEPT FOR WRR-800A/WRR-802A | \$98.00  |
| <b>WBC-20B-5P</b> | 50 OHM COAXIAL ANTENNA CABLE (20M) | ALL RACK-MOUNT TUNERS & DIVIDERS EXCEPT FOR WRR-800A/WRR-802A | \$122.00 |
| <b>WBC-30B-5P</b> | 50 OHM COAXIAL ANTENNA CABLE (30M) | ALL RACK-MOUNT TUNERS & DIVIDERS EXCEPT FOR WRR-800A/WRR-802A | \$165.00 |
| <b>WBC-50B-5P</b> | 50 OHM COAXIAL ANTENNA CABLE (50M) | ALL RACK-MOUNT TUNERS & DIVIDERS EXCEPT FOR WRR-800A/WRR-802A |          |

## **WIRELESS SUPPLIED ACCESSORIES- REPLACEMENT PARTS**

| <b>WORKS WITH MODELS:</b>                        | <b>DESCRIPTION</b>      | <b>KCP PART/ORDER #</b> | <b>PRICE</b> |
|--|-------------------------|-------------------------|--------------|
| MB-806A, WRR-801A                                | MODULE PANEL COVER      | 2-545-750-01            |              |
| WRR-800A, WRR-822A                               | AC ADAPTER              | 1-467-114-22            |              |
| WRT-800A   | WINDSCREEN CAGE         | X-3679-322-2            |              |
| WRT-800A   | WINDSCREEN              | 3-603-339-01            |              |
| WRT-800A   | ADJUSTMENT SCREWDRIVER  | 3-603-337-02            |              |
| WRT-800A, WRT-805A, WRR-805A, WRT-807A           | RATTAIL ANTENNA         | 1-467-301-11            |              |
| WRT-805A   | BELT-MOUNT SPRING       | 2-545-245-01            |              |
| WRR-805A, WRT-820A, WRT-822A, WRT-860A, WRR-810A | AA BATTERY CAGE ASS'Y   | A-4521-033-D            |              |
| WRR-805A   | 1/8" CONNECTION CABLE   | 1-790-935-11            |              |
| WRR-805A   | SOFT CASE/MOUNT ADAPTER | 2-545-716-01            |              |
| WRT-807A   | WINDSCREEN CAGE         | X-3678-174-2            |              |
| WRT-807A   | WINDSCREEN              | 3-682-258-01            |              |
| WRT-807A   | MIC HOLDER              | A-4508-029-A            |              |
| WRT-807A   | HOLDER SCREW ADAPTER    | 2-525-614-11            |              |
| WRT-830A, WRT-810A                               | MIC HOLDER              | A-4508-029-A            |              |
| WRT-830A, WRT-810A                               | HOLDER SCREW ADAPTER    | 2-100-952-00            |              |
| WRT-820A, WRT-822A                               | SOFT BELT CASE w/mount  | 2-540-964-01            |              |
| WRT-820A, WRT-822A                               | ANTENNA                 | 1-501-458-12            |              |
| ICF-SC1PC  | RF FILTER CLAMP         | 1-469-089-11            |              |
| ICF-SC1PC  | AC ADAPTER (AC-S500)    | 1-475-527-11            |              |
| ICF-SC1PC  | HELICAL ANTENNA         | 1-501-969-11            |              |
| ICF-SC1PC  | EARPHONE                | 1-504-116-11            |              |
| ICF-SC1PC  | SERIAL INTERFACE CABLE  | 1-783-377-11            |              |
| ICF-SC1PC  | BELT CLIP               | 3-020-642-01            |              |
| ICF-SC1PC  | CD-ROM                  | 3-023-743-01            |              |
| ICF-SC1PC  | FREQUENCY GUIDE         | 3-026-187-01            |              |
| ICF-SC1PC  | MANUAL                  | 3-861-712-11            |              |
| WRT-820A, WRT-822A                               | SOFT CASE/MOUNT ADAPTER | 2-540-964-01            |              |
| WRR-855A   | HELICAL ANTENNA         | 1-501-612-11            |              |
| WRR-810A   | CASE/MOUNT ASSEMBLY     | A-8265-089-A            |              |
| BTA-801  | DC-POWER CABLE          | 1-751-484-11            |              |

|   |   |              |         |
|---|---|--------------|---------|
| BTA-801, WRR-810A   | <b>ADAPTER PLATE-TOP MOUNT</b>                  | 2-540-028-01 |         |
| BTA-801, WRR-810A   | SCREWS FOR ABOVE (X2)                           | 7-682-547-09 |         |
| BTA-801, WRR-810A   | <b>ADAPTER PLATE-BOTTOM MOUNT</b>               | X-316-708-01 |         |
| BTA-801, WRR-810A   | SCREWS FOR ABOVE (X2)                           | 7-682-560-09 |         |
| WRR-805A  | DUAL CAMCORDER MOUNT PLATE                      | X-0248-167-1 |         |
| ADAPTS BTA-801A & WRR-810A TO ALL PROFESSIONAL CAMCORDERS | CAMCORDER MOUNTING BRACKET                      | A-8278-057-A |         |
| <b>SAD700</b>   | Stand Adapter for Handheld Wireless Microphones |              | \$25.00 |

## Camcorder / Wireless Microphone Configuration Chart

| CAMCORDERS          |   |  |   |                            | WIRELESS TUNERS   |  |   |  | SUGGESTED WIRELESS PACKAGES |   |  |
|---------------------|---|--|---|----------------------------|---|--|---|--|-----------------------------|---|--|
| CAMERA MODEL #      | SUPPLIED MOUNTING HDWRE                                     | OPTIONAL MOUNTING HDWRE (CAMCORDER)  | WIRELESS RECEIVER POWER VIA:  | AUDIO INPUT CONNECTOR TYPE | AUDIO OUTPUT CONNECTOR TYPE   | COMPATIBLE UHF TUNER   | SUPPLIED HDWRE  | OPTIONAL MOUNTING HDWRE (TUNER)  | PACKAGE #1 Hand-held        | PACKAGE #2 Body-pack/lavalier                         | PACKAGE #3 Plug-on transmitter                           |
| <b>HDCAM</b>        |   |  |   |                            |   |  |   |  |                             |   |  |
| HDW-500             | V-wedge for Li-Ion batteries (Includes A8278-057-A bracket) | Anton Bauer QR-SDH, w/ABWMKKIT adapter   | WRR-855A-4-PIN 12V DC (w/BTA-801)<br>WRR-810A,<br>WRR-805A-internal "AA" batteries (x2) | XLR (X2).                  | BTA-801A,<br>WRR-810A<br>supplied XLR connector,<br>WRR-805A-optional K-1334 XLR cable required | WR-855A (64, 66, 68)<br>WRR-810A (64,66,68)<br>WRR-805A (64, 66, 68) | WRR-855A-1/4 WAVE ANTENNAS (x2)<br>WRR-810A-1/4 WAVE (x1)<br>WRR-805A-antenna, soft case, 1/8" cable                  | BTA-801 (Include plate adapter) (REQUIRED for WRR-855A)<br>X-0248-167-1, dual plate adpter required for WRR-805A | WRR-855A(CH) (tuner)        | WRR-855A(CH) (tuner)                                  | WRR-855A(CH) (tuner)                                     |
| HDW-700<br>HDW-700A |   |  |   |                            |   |  |   |  | WRT-807A(CH) (transmitter)  | WRT-860A(CH) w/ECM-77BC lavalier microphone           | WRT-808A(CH) (plus any dymamic hand-held mic)            |
| HDW-F900            |   |  |   |                            |   |  |   |  |                             |   |  |
| <b>BETACAM</b>      |   |  |   |                            |   |  |   |  |                             |   |  |
| UVW-100B            | NP-1  | BKW-L601 (INCLUDES A-8278-057-A bracket )<br>-or-<br>Anton Bauer QRSP-200A, w/ABWMKKIT adapter                     | WRR-855A-4-PIN 12V DC (w/BTA-801)<br>WRR-810A,<br>WRR-805A-internal "AA" batteries (x2) | XLR (X2).                  | BTA-801A,<br>WRR-810A<br>supplied XLR connector,<br>WRR-805A-optional K-1334 XLR cable required | WR-855A (64, 66, 68)<br>WRR-810A (64,66,68)<br>WRR-805A (64, 66, 68) | WRR-855A-1/4 WAVE ANTENNAS (x2)<br>WRR-810A-1/4 WAVE (x1), case, XLR cable<br>WRR-805A-antenna, soft case, 1/8" cable | BTA-801 (Include plate adapter) (REQUIRED for WRR-855A)<br>X-0248-167-1, dual plate adpter required for WRR-805A | WRR-855A(CH) (tuner)        | WRR-855A(CH) (tuner)                                  | WRR-855A(CH) (tuner)                                     |
| PVW-D30             |   |  |   |                            |   |  |   |  | WRT-807A (transmitter)      | WRT-860A(CH) w/ECM-77BC lavalier microphone           | WRT-808A68 (plus any dymamic hand-held mic)              |
| PVW-D35             |   |  |   |                            |   |  |   |  | WRT-800A68 or WRT-807A(CH)  | WRT-805A(CH) w/ECM-44BMP -or- WRT-822A(CH) w/ECM-77BC | Suggested microphones:<br>F-740/9X<br>F-780/X<br>ECM-510 |
| <b>BETCAM SP</b>    |   |  |   |                            |   |  |   |  |                             |   |  |
| BVW-300<br>BVW-300A | NP-1  | BKW-L601 -or- BKW-L403 (INCLUDES A-8278-057-A bracket )<br>-or-<br>Anaton Bauer QRSP-200A/400A w/ABWMK KIT adapter | WRR-855A-4-PIN 12V DC (w/BTA-801)<br>WRR-810A,<br>WRR-805A-internal "AA" batteries (x2) | XLR (X2).                  | BTA-801A,<br>WRR-810A<br>supplied XLR connector,<br>WRR-805A-optional K-1334 XLR cable required | WR-855A (64, 66, 68)<br>WRR-810A (64,66,68)<br>WRR-805A (64, 66, 68) | WRR-855A-1/4 WAVE ANTENNAS (x2)<br>WRR-810A-1/4 WAVE (x1), case, XLR cable<br>WRR-805A-antenna, soft case, 1/8" cable | BTA-801 (Include plate adapter) (REQUIRED for WRR-855A)<br>X-0248-167-1, dual plate adpter required for WRR-805A | WRR-855A(CH) (tuner)        | WRR-855A(CH) (tuner)                                  | WRR-855A(CH) (tuner)                                     |
| BVW-400<br>BVW-400A |   |  |   |                            |   |  |   |  | WRT-807A (transmitter)      | WRT-860A(CH) w/ECM-77BC lavalier microphone           | WRT-808A(CH) (plus any dymamic hand-held mic)            |
| BVW-D600WS          |   |  |   |                            |   |  |   |  |                             |   |  |
| BVW-D600            |   |  |   |                            |   |  |   |  |                             |   |  |
| PVV-3               |   |  |   |                            |   |  |   |  | WRT-800A68 or WRT-807A(CH)  | WRT-805A(CH) w/ECM-44BMP -or- WRT-822A(CH) w/ECM-77BC | Suggested microphones:<br>F-740/9X<br>F-780/X<br>ECM-510 |
| BVV-5               |   |  |   |                            | NONE  |  |   |  |                             |   |  |
| <b>BETACAM SX</b>   |   |  |   |                            |   |  |   |  |                             |   |  |



### Camcorder / Wireless Microphone Configuration Chart

|                             |  |   |   |   |   |   |  |   |   |  |   |   |
|-----------------------------|--|---|---|---|---|---|--|---|---|--|---|---|
| <b>DNW-7</b>                | V-wedge for Li-Ion battery Included. Built-in slot for WRR-855A  | <b>A-8278-057-A</b> bracket (For 2nd WL unit only)<br>-or-<br><b>Anton Bauer QR-SDH w/ABWMK KIT</b> adapter | <b>WRR-855A</b> supplied internally from camera   | XLR (X2)<br>(For externally mounted WL unit <u>ONLY</u> )                 | <b>BTA-801A, WRR-810A</b> supplied XLR connector, <b>WRR-805A</b> -optional K-1334 XLR cable required | <b>WR-855A</b> (64, 66, 68)<br><b>WRR-810A</b> (64,66,68)<br><b>WRR-805A</b> (64, 66, 68) | <b>WRR-855A-1/4 WAVE ANTENNAS (x2)</b><br><b>WRR-810A-1/4 WAVE (x1)</b> , case, XLR cable<br><b>WRR-805A</b> -antenna, soft case, 1/8" cable | <b>BTA-801</b> (REQUIRED FOR SECOND WRR-855A)         | <b>WRR-855A(CH) (tuner)</b>   | <b>WRR-855A(CH) (tuner)</b>  | <b>WRR-855A(CH) (tuner)</b>   |   |
| <b>DNW-9WS</b>              |  |   | <b>WRT-805A(CH) w/ECM-44BMP</b><br>-or-<br><b>WRT-822A(CH) w/ECM-77BC</b>                           |   |   |   |  |   | <b>WRT-808A(CH)</b> (plus any dynamic hand-held mic)<br>Suggested microphones:<br><b>F-740/9X</b><br><b>F-780/X</b><br><b>ECM-510</b> |  |   |   |
| <b>DNW-90</b>               |  |   |   |   |   |   |  |   |   |  |   |   |
| <b>DNW-90WS</b>             |  |   |   |   |   |   |  |   |   |  |   |   |
| <b>DNV-5</b>                |  |   |   |   |   |   |  |   |   |  |   |   |
| <b>DIGITAL BETACAM</b>      |  |   |   |   |   |   |  |   |   |  |   |   |
| <b>DVW-700</b>              | V-wedge for Li-Ion battery & <b>A8278-057-A</b> bracket included | Anton Bauer <b>QR-SDH w/ABWMK KIT</b> adapter   | <b>WRR-855A-4-PIN 12V DC (w/BTA-801)</b><br><b>WRR-810A, WRR-805A</b> -internal "AA" batteries (x2) | XLR (X2).   | <b>BTA-801A, WRR-810A</b> supplied XLR connector, <b>WRR-805A</b> -optional K-1334 XLR cable required | <b>WR-855A</b> (64, 66, 68)<br><b>WRR-810A</b> (64,66,68)<br><b>WRR-805A</b> (64, 66, 68) | <b>WRR-855A-1/4 WAVE ANTENNAS (x2)</b><br><b>WRR-810A-1/4 WAVE (x1)</b> , case, XLR cable<br><b>WRR-805A</b> -antenna, soft case, 1/8" cable | <b>BTA-801</b> (REQUIRED- Includes mounting hardware) | <b>WRR-855A(CH) (tuner)</b>   | <b>WRR-855A(CH) (tuner)</b>  | <b>WRR-855A(CH) (tuner)</b>   |   |
| <b>DVW-700WS</b>            |  |   | <b>WRT-805A(CH) w/ECM-44BMP</b><br>-or-<br><b>WRT-822A68 w/ECM-77BC</b>                             |   |   |   |  |   | <b>WRT-808A(CH)</b> (plus any dynamic hand-held mic)<br>Suggested microphones:<br><b>F-740/9X</b><br><b>F-780/X</b><br><b>ECM-510</b> |  |   |   |
| <b>DVW-707</b>              |  |   |   |   |   |   |  |   |   |  |   |   |
| <b>DVW-709WS</b>            |  |   |   |   |   |   |  |   |   |  |   |   |
| <b>DVW-790WS</b>            |  |   |   |   |   |   |  |   |   |  |   |   |
| <b>DVCAM</b>                |  |   |   |   |   |   |  |   |   |  |   |   |
| <b>DSR-130WS</b>            | <b>NP-1</b>  | Anaton Bauer <b>QRSP-200A w/ABWMK KIT</b> adapter   | <b>WRR-855A-4-PIN 12V DC</b><br><b>WRR-810A, WRR-805A</b> -internal "AA" batteries (x2)             | XLR (X2)<br>Not used for DSR-300 and 500WS with <b>WRR855A / CA-WR855</b> | <b>BTA-801A, WRR-810A</b> supplied XLR connector, <b>WRR-805A</b> -optional K-1334 XLR cable required | <b>WR-855A</b> (64, 66, 68)<br><b>WRR-810A</b> (64,66,68)<br><b>WRR-805A</b> (64, 66, 68) | <b>WRR-855A-1/4 WAVE ANTENNAS (x2)</b><br><b>WRR-810A-1/4 WAVE (x1)</b> , case, XLR cable<br><b>WRR-805A</b> -antenna, soft case, 1/8" cable | <b>BTA-801</b> (Include plate adapter)                | <b>WRR-855A(CH) (tuner)</b>   | <b>WRR-855A(CH) (tuner)</b>  | <b>WRR-855A(CH) (tuner)</b>   |   |
| <b>DSR-200 DSR-200A</b>     | -  | <b>DSBK-201</b>   | <b>WRR-810A, WRR-805A</b> -internal "AA" batteries (x2)   |   |   |   |  |   | <b>BTA-801</b> (Include plate adapter)  | -  | -   | -   |
| <b>DSR-300 DSR-300A</b>     | -  | <b>CA-WR855</b>   | <b>WRR-855A</b> powered through CA-WR855  |   |   |   |  |   | <b>CA-WR855</b>   | <b>WRT-807A(CH) or WRT-800A68</b>  | <b>WRT-805A(CH) w/ECM-44BMP</b><br>-or-<br><b>WRT-822A(CH) w/ECM-77BC</b>                         | <b>WRT-808A68</b> (plus any dynamic hand-held mic)<br>Suggested microphones:<br><b>F-740/9X</b><br><b>F-780/X</b><br><b>ECM-510</b> |
| <b>DSR-500WS</b>            | -  |   | <b>CA-WR855 or BTA-801 / A-8278-057-A</b>   |   |   |   |  |   | <b>WRR-810A, WRR-805A</b> internal "AA" batteries (x2)  |  |   |   |
| <b>DSR-PD1</b>              | -  | -   | <b>WRR-805A</b> internal "AA" batteries (x2)  |   |   |   |  |   | 1/8" MINIPLUG-BALANCED  | WRR-805A-Supplied 1/8" minplug or optional K-1334 XLR cable  | <b>WRR-805A</b> (64,66,68)  | 1/4 WAVE ANTENNA (x1), 1/8"-1/8" CABLE (x1). VINYL CASE   |
| <b>DSR-PD100 DSR-PD100A</b> | -  | -   | <b>WRR-810A WRR-805A</b> -Internal "AA" batteries (x2)  | 1/8" MINIPLUG-BALANCED OR XLR BALANCED (x1)                               | WRR-805A-Supplied 1/8" minplug or optional K-1334 XLR cable   | <b>WRR-805A</b> (64,66,68), <b>WRR-810A</b> (64, 66 & 68)                                 | <b>WRR-810A</b> - XLR audio connector, antenna, case<br><b>WRR-805A</b> - 1/8"-audio CABLE , case  | -   | <b>WRR-805A(CH) (Tuner)</b><br>plus<br><b>WRT-800A68</b> or<br><b>WRT-807A(CH) (Transmitter)</b>                                      | <b>WRR-805A(CH) (Tuner)</b> plus<br><b>WRT-805A(CH) (Transmitter) + mic (ECM-44BMP or ECM-77BMP)</b> | <b>WRR-805A(CH) (Tuner)</b> plus<br><b>WRT-808A(CH) (Transmitter) + mic (F-740/9X or F-780/X)</b> |   |

### Camcorder / Wireless Microphone Configuration Chart

|  |   |   |   |  |  |                               |   |   |           |           |           |
|--|---|---|---|--|--|-------------------------------|---|---|-----------|-----------|-----------|
| <b>DSR-PD150</b>   | - | - | <b>WRR-810A</b><br><b>WRR-805A</b> -<br>Internal "AA"<br>batteries (x2) | 1/8" MINIPLUG-<br>BALANCED (x1)<br>OR XLR<br>BALANCED (x2) | <b>WRR-810A</b> -<br>Supplied XLR cable<br><b>WRR-805A</b> -<br>Supplied 1/8" minplug<br>or optional K-1334<br>XLR cable | <b>WRR-805A</b><br>(64,66,68) | 1/4 WAVE<br>ANTENNA (x1),<br>1/8"-1/8" CABLE<br>(x1). VINYL<br>CASE | - | SEE ABOVE | SEE ABOVE | SEE ABOVE |
| DV   |   |   |   |  |  |                               |   |   |           |           |           |
| <b>DCR-VX1000</b><br><b>DCR-VX2000</b>   | - | - | <b>WRR-805A</b> -<br>Internal "AA"<br>batteries (x2)                    | 1/8" MINIPLUG-<br>BALANCED                                 | <b>WRR-810A</b> -<br>Supplied XLR cable<br><b>WRR-805A</b> -<br>Supplied 1/8" minplug<br>or optional K-1334<br>XLR cable | <b>WRR-805A</b><br>(64,66,68) | 1/4 WAVE<br>ANTENNA (x1),<br>1/8"-1/8" CABLE<br>(x1). VINYL<br>CASE | - | SEE ABOVE | SEE ABOVE | SEE ABOVE |
| <p>1) *The WRR-855A with the BTA-801, WRR-810A and the X-0248-167-1, use the same mounting system. These are all compatible with camcorder models using the BKW-L601, DSBK-201, BKW-L403, NP-1, BP-90B and Anton Bauer adapters. However, whereas the WRR-810A operates on it's own internal battery power, the WRR-855A will <i>ONLY</i> operate with power received from the camcorder battery.</p> <p>2) **The WRR-855A with the CA-WR855 adapter works <i>ONLY</i> with the DSR-300 &amp; 500(WS). The WRR-855A with no bracket or adapter, works <i>ONLY</i> with Betacam SX models (plug-in slot).</p> |   |   |   |  |  |                               |   |   |           |           |           |

## Free Manuals Download Website

<http://myh66.com>

<http://usermanuals.us>

<http://www.somanuals.com>

<http://www.4manuals.cc>

<http://www.manual-lib.com>

<http://www.404manual.com>

<http://www.luxmanual.com>

<http://aubethermostatmanual.com>

Golf course search by state

<http://golfingnear.com>

Email search by domain

<http://emailbydomain.com>

Auto manuals search

<http://auto.somanuals.com>

TV manuals search

<http://tv.somanuals.com>