

**BELKIN®**

**Concealed  
Surge Protector**

**BELKIN®**

**Concealed  
Surge Protector**



**BELKIN®**

[www.belkin.com](http://www.belkin.com)

Belkin Ltd.  
+44 (0) 1933 35 2000  
Rushden, United Kingdom

Belkin B.V.  
+31 (0) 20 654 7300  
Schiphol-Rijk, Netherlands

Belkin Sweden  
+46 (0) 8 5229 1870  
Kista, Sweden

Belkin SAS  
+33 (0) 1 41 03 14 40  
Boulogne-Billancourt, France

Belkin Iberia  
+34 91 625 80 00  
San Sebastián de los Reyes, Spain

Belkin Nordics & Baltics  
+45 (0) 3612 6000  
Brøndby, Denmark

Belkin GmbH  
+49 (0) 89 143405 0  
Munich, Germany

Belkin Italy & Greece  
+39 02 862 719  
Milano, Italy

Belkin Ltd.  
+971 (0) 4 369 2705  
Dubai Internet City, Dubai, UAE

© 2007 Belkin International, Inc. All rights reserved. All trade names are registered trademarks of respective manufacturers listed.

P36534uk

**User Manual**

BZ108130uk2M  
BZ108130ir2M

## Introduction

Thank you for purchasing the Belkin Concealed Surge Protector. Each year, frequent natural and man-made power disturbances corrupt the power supplied to your home and office electronics. The Concealed Surge Protector provides Belkin's 'Extreme' protection level and an innovative cable-management solution, providing a great way to organise and conceal your power cords. Please be sure to read through the Set Up Guide and Safety Information to ensure proper protection of your connected devices.

## Product Features

8 Surge Protected BlockSpace sockets, positioned for maximum connection flexibility.

Auxiliary Surge Protection through BT / RJ11\* and Coaxial cable ports. Providing additional surge protection for telephone, modem and Home Theatre equipment.

Integrated Cord Management - Molded slots enable multiple cables to be directed through the top of the unit and neatly marshalled out of the top or side.

Cord and Plug Concealing Cover - Creates an organised and professional look. Acts as a deterrent against pets, infants and children from accessing the socket connections.

## Set Up Guide

### Step 1: Connect your equipment

Plug your equipment into the eight available sockets. Please refer to the Safety Information paragraph prior to connecting the Surge Protector to a mains power supply.

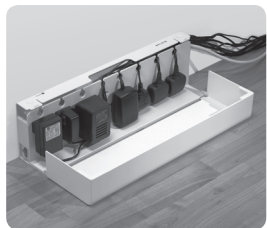
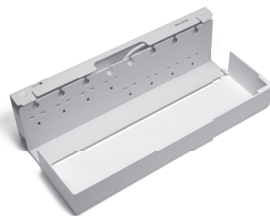
### Step 2: Connect your peripheral devices

Connect any BT / RJ11\* or Coaxial cable enabled device for added surge protection.

\* on Irish model BZ108130ir2M

### Step 3: Organize your cables

Route all power cables through the slots above the plug sockets. Cables can then be directed through either side or out of the top of the Surge Protector.



### Step 4:

#### Activate the Surge Protector

Close the Concealing Cover and plug the unit into the AC wall outlet. Make sure the power switch is in the ON position.

### Step 5:

#### Mounting instructions (Optional)

Use the two mounting holes on the back of the Surge Protector to secure it to your wall or baseboard. Install two screws into your wall or baseboard making sure that at least 1/4 inch of the screw is still exposed. Insert the screws into the mounting holes of the baseboard and lock into place.

NOTE: hardware not included.

## Safety Information

**CAUTION:** Do not overload unit. The total output current of the AC adaptor blocks is not intended to be more than seven Amps. Large AC adaptor blocks must not be plugged in adjacent to one another.

It is recommended that AC adaptor blocks are alternated between standard plugs to enable sufficient air ventilation between sockets and avoid the risk of over heating, when the concealing cover is closed.

**CAUTION:** The on/off switch incorporates a light indicating the presence of live mains at the surge protector. This is not an indicator of live mains availability at the socket outlets.

To determine the output current of plugged-in devices, read the device-rating label. This label may be located on the transformer block plug, on the equipment, or in the manufacturer's user manual. Add the **input** current rating of all plugged-in devices to find the total current. If the total input current of the AC adaptor blocks is greater than 7 Amps, unplug equipment from the unit.

To prevent any risk of electrical shock, unplug the unit before cleaning.

Do not "daisy-chain" this product or use it with extension cords. The Belkin Concealed Surge Protector's cord must be plugged directly into an AC power source.

Use indoors and in dry locations. Not for use with aquariums or other water-related products.

Device-Rating-Label Example:

MODEL NO.: BE123456
INPUT: 100-240V <b>1.0A</b> 50/60Hz
OUTPUT: 12V 2.6A
Made in China

## Free Manuals Download Website

<http://myh66.com>

<http://usermanuals.us>

<http://www.somanuals.com>

<http://www.4manuals.cc>

<http://www.manual-lib.com>

<http://www.404manual.com>

<http://www.luxmanual.com>

<http://aubethermostatmanual.com>

Golf course search by state

<http://golfingnear.com>

Email search by domain

<http://emailbydomain.com>

Auto manuals search

<http://auto.somanuals.com>

TV manuals search

<http://tv.somanuals.com>