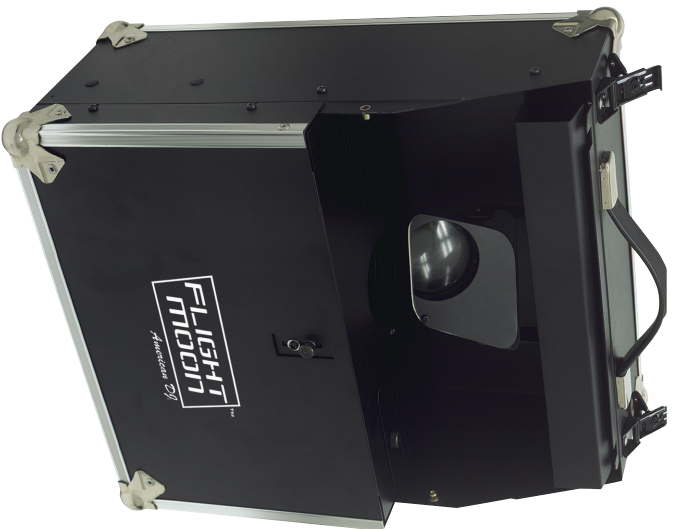


# American DJ®

## FLIGHT MOON™



## User Instructions

Revised 9/01

**American DJ®**  
4295 Charter Street  
Los Angeles CA. 90058  
[www.americandj.com](http://www.americandj.com)

### Flight Moon™

### General Information

**Unpacking:** Thank you for purchasing the Flight Moon™ by American DJ®. Every unit has been thoroughly tested and has been shipped in perfect operating condition. Carefully check the shipping carton for damage that may have occurred during shipping. If the carton appears to be damaged, carefully inspect your fixture for any damage and be sure all equipment necessary to operate the unit has arrived intact. In the event damage has been found or parts are missing, please contact our toll free customer support number for further instructions. Do not return this unit to your dealer without first contacting customer support.

**Introduction:** The Flight Moon™ projects twenty vibrant colorful beams outwards in a moon flower configuration. The beams rotate back and forth to the beat of music. It will also create a great strobe flower effect. A manually adjustable mirror allows you to direct the light beams where you want them. The rugged, powder coated metal flight case with protective corners and seams makes the Flight Moon™ safe to transport anywhere. A poll mount socket is fitted in the bottom of the unit for tripod mounting. You can connect multiple Flight Moon™ units together to operate in a master/slave configuration. The unit may also be operate by an universal DMX controller. The optional footswitch control, which takes place of the protective cover, allows manual control of the color wheel, strobbing, auto mode, slow fade mode and blackout.

**Customer Support:** American DJ® provides a toll free customer support line, to provide set up help and to answer any question should you encounter problems during your set up or initial operation. You may also visit us on the web at [www.americandj.com](http://www.americandj.com) for any comments or suggestions. Service Hours are Monday through Friday 9:00 a.m. to 5:00 p.m. Pacific Standard Time.

Voice: (800) 322-6337  
Fax: (323) 582-2610  
E-mail: [support@americandj.com](mailto:support@americandj.com)

**Warning!** To prevent or reduce the risk of electrical shock or fire, do not expose this unit to rain or moisture.

**Caution!** There are no user serviceable parts inside this unit. Do not attempt any repairs yourself, doing so will void your manufacturer warranty. In the unlikely event your unit may require service please contact your nearest American DJ® dealer.

## Flight Moon™

## Contents

Introduction.....	3
Customer Support.....	3
Product Registration.....	4
Features.....	3
DMX Traits.....	3
Set-Up.....	3
Lamp & Fuse Replacement.....	3
Specifications.....	3
Optional Foot Switch.....	3

## Flight Moon™

## General Instructions

To optimize the performance of this product, please read these operating instructions carefully to familiarize yourself with the basic operations of this unit. These instructions contain important safety information regarding the use and maintenance of this unit. Please keep this manual with the unit, for future reference.

## Flight Moon™

## Product Registration

The Flight Moon™ carries a one year (365 days) limited warranty. Please fill out the enclosed warranty card to validate your purchase. All returned service items whether under warranty or not, must be freight pre-paid and accompany a return authorization (R.A.) number. If the unit is under warranty, you must provide a copy of your proof of purchase invoice. Please contact American Dj® customer support for a R.A. number.

## Flight Moon™

## Features

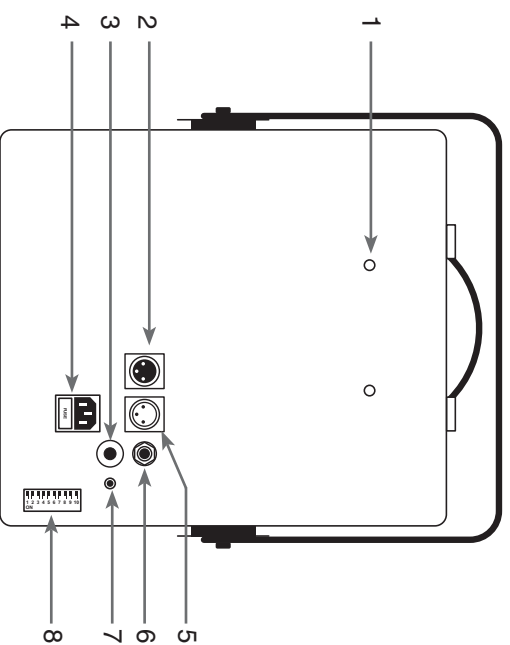
- Micro-Stepping Motors for Smooth Color Transitions
- DMX-512 Protocol Compatible (Uses 2 DMX Channels)
- Full Manual Focusing
- Fan Cooled.
- 7 Colors Plus White
- Master/Slave Operation
- Internal Microphone with Volume Sensitivity Knob
- Easy Lamp Replacement
- ZB-JCR H5 15v/150w Lamp
- Variable Speed Strobe Function
- Optional FlightMoon/C Remote Controller

## Flight Moon™

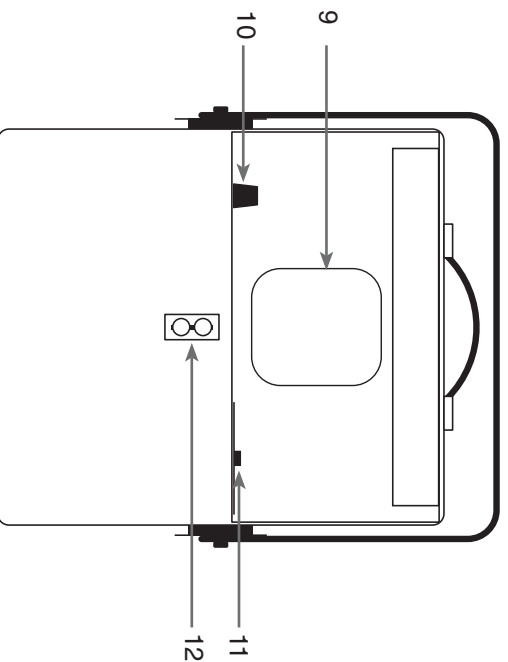
## Safety Precautions

- To reduce the risk of electrical shock or fire, do not expose this unit rain or moisture
- Do not spill water or other liquids into or on to your unit.
- Be sure that the local power outlet match that of the required voltage for your unit.
- Do not attempt to operate this unit if the power cord has been frayed or broken.
- Do not attempt to remove or break off the ground prong from the electrical cord. This prong is used to reduce the risk of electrical shock and fire in case of an internal short.
- Disconnect from main power before making any type of connection.
- Do not remove the cover under any conditions. There are no user serviceable parts inside.
- Never operate this unit when it's cover is removed.
- Never plug this unit in to a dimmer pack
- Always be sure to mount this unit in an area that will allow proper ventilation. Allow about 6" (15cm) between this device and a wall.
- Do not attempt to operate this unit, if it becomes damaged.
- This unit is intended for indoor use only, use of this product outdoors voids all warranties.
- During long periods of non-use, disconnect the unit's main power.
- Always mount this unit in safe and stable matter.
- Power-supply cords should be routed so that they are not likely to be walked on or pinched by items placed upon or against them, paying particular attention to cords at plugs, convenience receptacles, and the point where they exit from the appliance.
- Cleaning -The fixture should be cleaned only as recommended by the manufacturer. See page 7 for cleaning details.
- Heat -The appliance should be situated away from heat sources such as radiators, heat registers, stoves, or other appliances (including amplifiers) that produce heat.
- The fixture should be serviced by qualified service personnel when:
  - A. The power-supply cord or the plug has been damaged.
  - B. Objects have fallen, or liquid has been spilled into the appliance.
  - C. The appliance has been exposed to rain or water.
  - D. The appliance does not appear to operate normally or exhibits a marked change in performance.

## REAR



## FRONT



- 1. Thumb Holders** - These two thumb screw holders are designed to secure the front panel when the unit is in use.
- 2. XLR Input Jack** - This jack is used to accept an incoming DMX signal or Master/Slave signal.
- 3. Microphone** - This microphone receives external low frequencies to trigger the unit in Sound-Active and Master/Slave mode.
- 4. Power Inlet/Fuse Holder** - This housing stores a 5 amp GMA pro-

tective fuse and is also used as the main power supply connection. Use only properly grounded IEC power cord. Always replace with the exact same type fuse, unless otherwise instructed, by an authorized American DJ® service technician.

- 5. XLR Output Jack** - This jack is used to transmit the incoming DMX signal to another DMX fixture, or transmit a Master/Slave signal to the next Flight Moon™ in the chain. For best results in DMX or Master/Slave mode terminate this jack if it is the last unit in the chain. See "Terminator" on page 12.
- 6. Flight Moon/C Controller Jack** - This jack is for use with the optional FlightMoon/C footswitch controller only. *Do not attempt to connect an audio signal this jack, this will damage the PC board and void your manufactures warranty!*
- 7. Power Indicator** - This light is used to indicate proper operation.
- 8. Dip Switches** - These switches serve two functions. In master slave mode these switches are used to assign a specific head address. In DMX mode these switches are used to assign a DMX address to the unit. In DMX mode each switch corresponds to a specific value based on DMX encoding. See page 10 for a detailed explanation of DMX encoding.
- 9. Mirror** - This is a highly reflective surface mirror specifically designed to optimize and enhance beam output. Never use glass cleaner that contains ammonia to clean the surface of the mirror (such as Windex).
- 10. Audio Sensitivity Knob** - This adjust audio sensitivity of the internal microphone (3). Turning the sensitivity knob in the clockwise direction will increase the sensitivity to sound. Turning the knob in the counter clockwise direction will decrease the fixture's sensitivity to sound.
- 11. Lamp Socket Assembly Plate** - This plate accesses the lamp socket assembly. **Lamp Socket Assembly** - This assembly holds a ZB-JCR H5 15V/150W lamp.
- 12. Focusing Adjustments** - This thumb screws are used to focus the high quality lens.



**Operating Modes:** This unit may be operated in 3 different modes:

- **Stand-Alone Mode (Usually for single unit operation)** - The unit will react to sound, chasing through the several built in programs. You can also use the optional FlightMoon/C remote control to blackout, change color, and change operation of the unit.
- **Master/Slave Mode** - Allows you to daisy chain up to 4 fixtures together for a synchronized light show. The fixtures will react to sound chasing through several built in programs. You can also use the optional FlightMoon/C remote control.

- **DMX Control Mode** - This function will allow you to control each fixtures DMX traits with a standard DMX 512 controller such as the American DJ® Show Designer™ or DMX Operator.™

**NOTE:** Stand-Alone and Master/Slave operation require a sound source to operate properly. The units will blackout to conserve lamp life when inactive for more than 60 seconds. A single sound source will reactivate the units.

**Universal DMX Control:** This function allows you to use a universal DMX 512 controller as the American DJ® DMX Operator™ or Show Designer™ to control the internal dish movement and change color. The use of a DMX controller will allow you to customize the use of fixtures allowing you to control the rotation of the internal dish as well as colors. Operating through a DMX controller allows the freedom to create unique programs tailored to one's individual needs.

1. The Flight Moon™ uses two DMX channels. Channel 1 controls the color and strobe function, channel 2 controls the internal mirror movement. See page 15 for detailed description of the DMX traits.
2. To control your fixture in DMX mode, follow the set-up procedures on pages 10-12 as well as the set-up specifications that are included with your DMX controller.
3. Use the controller's faders to control the various DMX fixture traits.
4. This will allow you to create your own programs.
5. When using a DMX controller and setting up for DMX operation follow the dip switch settings on page 15.
6. For help operating in DMX operation consult the manual included with your DMX controller.
7. For longer cable runs (more than a 100 feet) use a terminator on the last fixture.

**Stand-Alone Operation (Sound Active):** This function allows a single unit to run to the beat of the music. Only use this function when running a single unit, or when running several units as individuals.

1. To activate the Sound-Active mode be sure the number 10 dip-switch is set to the on position. Refer to "Master Unit" on the Master-Slave DIP SWITCH chart on page 15).
2. The unit will now react to the low frequencies of music via the internal microphone.
3. Adjust the Audio Sensitivity Knob (10) located on the of the unit to make the unit more or less sensitive to sound. Turning the sensitivity knob in the clockwise direction will increase the sensitivity, turning the knob in the counter-clockwise direction will decrease the fixture's sensitivity to sound.
4. The optional FlightMoon/C Controller may be used with this function for blackout.

**Master-Slave Operation (Sound Active):** This function will allow you to link up to 4 units together and operate without a controller. The units will be sound activated. In Master-Slave operation one unit will act as the controlling unit and the others will react to the controlling units programs. Any unit can act as a Master or as a Slave.

1. Using standard XLR microphone cables, daisy chain your units together via the XLR connector on the rear of the units. Remember the Male XLR connector is the input and the Female XLR connector is the output. The first unit in the chain (master) will use the female XLR connector only - The last unit in the chain will use the male XLR connector only. For longer cable runs we suggest a terminator at the last fixture.
2. Follow the chart on page 15 for proper unit dip switch settings.
3. The optional FlightMoon/C Mini-Controller may be used with this function for blackout.
4. After all the units settings have been set and are plugged in, adjust the sensitivity knob on the rear of the master unit to make them react to sound.

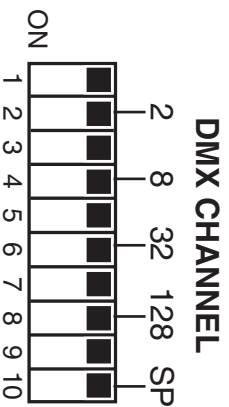
**Power Supply:** Before plugging your unit in, be sure the source voltage in your area matches the required voltage for your American Dj® Flight Moon.™ The American Dj® Flight Moon™ is available in a 120V and 220V version. Because line voltage may vary from venue to venue, you should be sure your unit voltage matches the wall outlet voltage before attempting to operate you fixture.

**DMX-512:** DMX is short for Digital Multiplex. This is a universal protocol used as a form of communication between intelligent fixtures and controllers. A DMX controller sends DMX data instructions from the controller to the fixture. DMX data is sent as serial data that travels from fixture to fixture via the DATA "IN" and DATA "OUT" XLR terminals located on all DMX fixtures (most controllers only have a DATA "OUT" terminal).

**DMX Linking:** DMX is a language allowing all makes and models of different manufactures to be linked together and operate from a single controller, as long as all fixtures and the controller are DMX compliant. To ensure proper DMX data transmission, when using several DMX fixtures try to use the shortest cable path possible. The order in which fixtures are connected in a DMX line does not influence the DMX addressing. For example; a fixture assigned a DMX address of 1 may be placed anywhere in a DMX line, at the beginning, at the end, or anywhere in the middle. When a fixture is assigned a DMX address of 1, the DMX controller knows to send DATA assigned to address 1 to that unit, no matter where it is located in the DMX chain.

**Dip-switches in DMX mode:** This unit uses dip switches to assign a DMX address. Each dip switch represents a binary value.

Dip Switch 1 address equals 1  
 Dip Switch 2 address equals 2  
 Dip Switch 3 address equals 4  
 Dip Switch 4 address equals 8  
 Dip Switch 5 address equals 16  
 Dip Switch 6 address equals 32  
 Dip Switch 7 address equals 64  
 Dip Switch 8 address equals 128  
 Dip Switch 9 address equals 256  
 Dip Switch 10 - Some unit omit dip switch 10, when a unit does



included dip switch 10 it is used for special functions such as sound activation.

Each dip switch has a preset value. A specific DMX address is set by combining the dipswitches that sum your desired value. For example: To achieve a DMX address of 21, combine dip switches 1, 3, and 5. Sense dipswitch 1 has a value of 1, dipswitch 3 has a value of 4, and dipswitch 5 has a value of 16, the combination of the create a DMX value of 21.

Set DMX address 21:

Dipswitch # 1 = 1  
 Dipswitch # 3 = 4  
 Dipswitch # 5 = 16  
 = 21

Set DMX address 201:

Dipswitch # 1 = 1  
 Dipswitch # 4 = 8  
 Dipswitch # 7 = 64  
 Dipswitch # 8 = 128  
 = 201

### Data Cable (DMX Cable) Requirements (For DMX and Master/

**Slave Operation):** The Flight Moon™ can be controlled via DMX-512 protocol. The American Dj® Flight Moon™ is a two channel DMX unit. The DMX address is set on the front panel of the Flight Moon™. Your unit and your DMX controller require a standard 3-pin XLR connector for data input and data output (Figure 1). If you are making your own cables, be sure to use standard two conductor shielded cable (This cable may be purchased at almost all pro sound and lighting stores). Your cables should be made with a male and female XLR connector on either end of the cable. Also remember that DMX cable must be daisy chained and can not be split.



Figure 1

**Notice:** Be sure to follow figures two and three when making your own cables. Do not use the ground lug on the XLR connector. Do not connect the cable's shield conductor to the ground lug or allow the shield conductor to come in contact with the XLR's outer casing. Grounding the shield could cause a short circuit and erratic behavior.



Figure 2

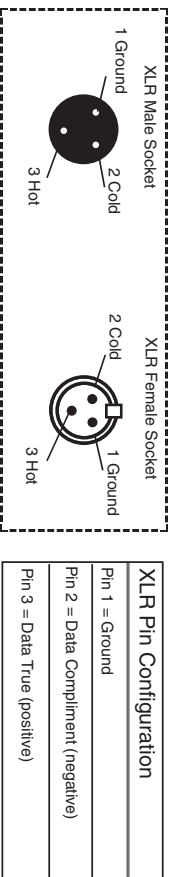


Figure 3

**Special Note: Line Termination.** When longer runs of cable are used, you may need to use a terminator on the last unit to avoid erratic behavior. A terminator is a 90-120 ohm 1/4 watt resistor which is connected between pins 2 and 3 of a male XLR connector (DATA + and DATA -). This unit is inserted in the female XLR connector of the last unit in your daisy chain to terminate the line. Using a cable terminator (ADJ part number Z-DMX/T) will decrease the possibilities of erratic behavior.



Termination reduces signal errors and avoids signal transmission problems and interference. It is always advisable to connect a DMX terminal. (Resistance 120 Ohm 1/4 W) between PIN 2 (DMX-) and PIN 3 (DMX+) of the last fixture.

Figure 4

**5-Pin XLR DMX Connectors.** Some manufacturers use 5-pin XLR connectors for DATA transmission in place of 3-pin. 5-pin XLR fixtures may be implemented in a 3-pin XLR DMX line. When inserting standard 5-pin XLR connectors in to a 3-pin line a cable adaptor must be used, these adaptors are readily available at most electric stores. The chart below details a proper cable conversion.

3-Pin XLR to 5-Pin XLR Conversion		
Conductor	3-Pin XLR Female (Out)	5-Pin XLR Male (In)
Ground/Shield	Pin 1	Pin 1
Data Complement (- signal)	Pin 2	Pin 2
Data True (+ signal)	Pin 3	Pin 3
Not Used		Do Not Use
Not Used		Do Not Use

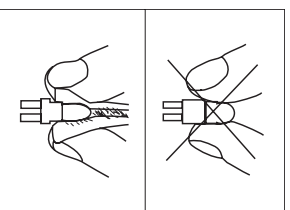
**Caution:** Always replace with the exact same type lamp and fuse, unless otherwise specified by an authorized American DJ® technician. Replace with anything other than the specified part can damage your unit and will void your manufactures warranty.

**Warning:** If, after replacing the lamp or fuse either one continues to blow, STOP using the unit. Contact customer support for further instructions, you may have to return the unit for servicing. Continuing to use the unit may cause serious damage.

**Fuse Replacement:** Disconnect the unit's main power supply. Insert a standard flat head screw driver in to the fuse holder housing. Turn the screwdriver in counter-clockwise direction to remove the fuse holder. Remove the fuse holder to expose the fuse. Remove the old fuse and discard it. Replace the fuse with the same type. Insert the fuse holder back into it's housing and turn it in clockwise direction to lock the holder in place.

**Lamp Replacement:** Caution! Never attempt to change the lamp while the fixture is plugged in. Always disconnect the main power and allow the unit ample time to cool before attempting to replace the lamp. Lamp replacement has been made simple by incorporating the use of a flip-up front cover that is retained by thumb screws.

1. Be sure to follow the proper handling procedures that deal with halogen lamps.
2. Remove the thumb screw on the top/rear of the unit that holds the lamp socket assembly cover in place.
3. After removing the thumb screw, slide out the cover from the rear of the unit to expose the lamp socket assembly.
4. Carefully remove the old lamp and discard it in the trash.
5. Replace the lamp with an exact match and reassemble in reverse order.



**Halogen Lamp Warning:** This fixture is fitted with halogen lamps which are highly susceptible to damage if improperly handled. Never touch the lamps with your bare fingers as the oil from your hands will shorten lamp life. Also, never move the fixture until the lamps have had ample time to cool. Remember, lamps are not covered under warranty conditions.

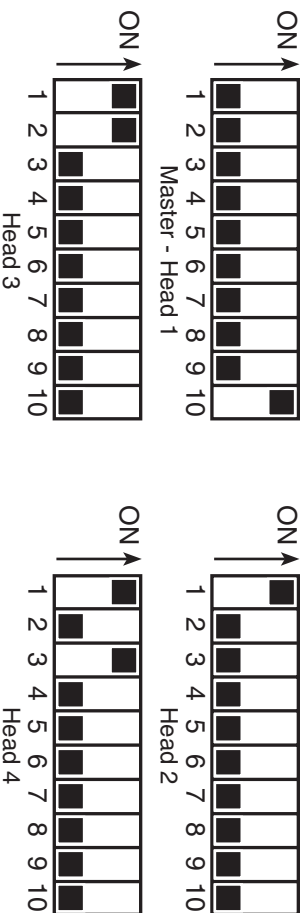




## Flight Moon™

## Master/Slave Settings

This chart details the Master/Slave dip switch setting for Master/Slave configuration for four units. Use these dip switch setting when you will be using two or more fixtures in a Master/Slave configuration. The "Master - Head 1" settings should only be used once.



## Flight Moon™

## Focusing

1. To focus a Flight Moon,™ it is best to first turn down the music sensitivity knob to its minimum position.
2. Loosen the two thumb screws on the front of the unit that hold the lens in place.
3. Adjust the focus by manually sliding the lens up and down.
4. Tighten the thumb screw after you achieve your desired focus.

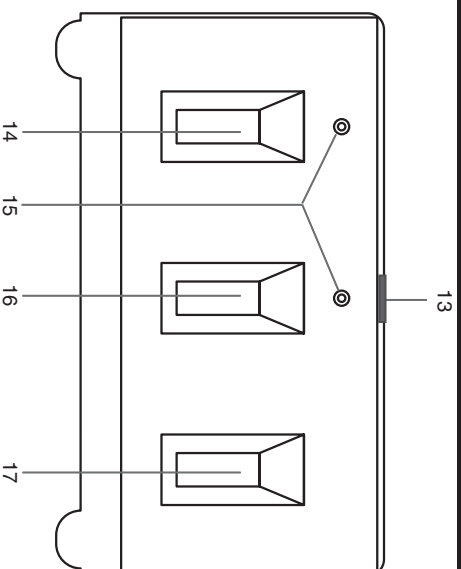
## Flight Moon™

## Optional Foot Controller

The FlightMoon/C™ controller may be purchased separately allowing you to control the main unit, and any others connected to it, while it is in sound-active or master/slave mode. You can set the unit to blackout, change colors, and change operating modes. If you have more than one unit, make sure the remote control is plugged into the first unit in the daisy chain. The remote control will not have any effect if the unit(s) is in DMX mode.

## Flight Moon™

## Optional Foot Controller Cont.



**13. Output Jack** - This is a stereo output jack used to link the foot controller to the main unit. Be sure only to use a stereo to stereo 1/4" male plug for proper functionality.

**14. Effect Switch** - This switch will dictate the functionality of the *Function Switch (16)*. Holding down the switch for more than 1 second will change the mode. Mode 1 is indicated by the green LED. When in mode 2 the green LED is off.

**15. LED Function Indicators** - These green LEDs indicate current activity.

**16. Function Switch** - This switch works in conjunction with the *Effect Switch (14)* to dictate the unit's function. Holding down the switch for more than 2 seconds will change function. The remote can control 4 different operating function (2 in each mode) plus blackout.

**MODE 1 (Effect LED On):** Function 1 (LED On) - Tapping the function switch slowly changes colors.  
Function 2 (LED off) - Tapping the function switch rapidly changes colors.  
Function 1 (LED on) - Units will react quickly to an audio source.  
Function 2 (LED off) - Unit will react slowly to an audio source

**17. Blackout Switch** - This button will blackout out the unit regardless of the current operation.



This chart list the DMX dip switch setting for DMX address 1 through 511. Follow the instructions below to configure fixture dip switches with your desired DMX address.

**DMX Address Quick Reference Chart**

DMX Dip Switch Settings					Dip Switch Position				
#1	#2	#3	#4	#5	#9	#8	#7	#6	DMX Address
X = OFF O = ON									
X	X	X	X	X	X	X	X	X	3
X	X	X	X	X	X	X	X	X	64
X	X	X	X	X	X	X	X	X	128
X	X	X	X	X	X	X	X	X	192
X	X	X	X	X	X	X	X	X	256
X	X	X	X	X	X	X	X	X	320
X	X	X	X	X	X	X	X	X	384
X	X	X	X	X	X	X	X	X	448
X	X	X	X	X	X	X	X	X	511
X	X	X	X	X	X	X	X	X	1
X	X	X	X	X	X	X	X	X	33
X	X	X	X	X	X	X	X	X	66
X	X	X	X	X	X	X	X	X	99
X	X	X	X	X	X	X	X	X	132
X	X	X	X	X	X	X	X	X	165
X	X	X	X	X	X	X	X	X	198
X	X	X	X	X	X	X	X	X	231
X	X	X	X	X	X	X	X	X	264
X	X	X	X	X	X	X	X	X	297
X	X	X	X	X	X	X	X	X	330
X	X	X	X	X	X	X	X	X	363
X	X	X	X	X	X	X	X	X	396
X	X	X	X	X	X	X	X	X	429
X	X	X	X	X	X	X	X	X	462
X	X	X	X	X	X	X	X	X	495
X	X	X	X	X	X	X	X	X	528
X	X	X	X	X	X	X	X	X	561
X	X	X	X	X	X	X	X	X	594
X	X	X	X	X	X	X	X	X	627
X	X	X	X	X	X	X	X	X	660
X	X	X	X	X	X	X	X	X	693
X	X	X	X	X	X	X	X	X	726
X	X	X	X	X	X	X	X	X	759
X	X	X	X	X	X	X	X	X	792
X	X	X	X	X	X	X	X	X	825
X	X	X	X	X	X	X	X	X	858
X	X	X	X	X	X	X	X	X	891
X	X	X	X	X	X	X	X	X	924
X	X	X	X	X	X	X	X	X	957
X	X	X	X	X	X	X	X	X	990
X	X	X	X	X	X	X	X	X	1023
X	X	X	X	X	X	X	X	X	1056
X	X	X	X	X	X	X	X	X	1089
X	X	X	X	X	X	X	X	X	1122
X	X	X	X	X	X	X	X	X	1155
X	X	X	X	X	X	X	X	X	1188
X	X	X	X	X	X	X	X	X	1221
X	X	X	X	X	X	X	X	X	1254
X	X	X	X	X	X	X	X	X	1287
X	X	X	X	X	X	X	X	X	1320
X	X	X	X	X	X	X	X	X	1353
X	X	X	X	X	X	X	X	X	1386
X	X	X	X	X	X	X	X	X	1419
X	X	X	X	X	X	X	X	X	1452
X	X	X	X	X	X	X	X	X	1485
X	X	X	X	X	X	X	X	X	1518
X	X	X	X	X	X	X	X	X	1551
X	X	X	X	X	X	X	X	X	1584
X	X	X	X	X	X	X	X	X	1617
X	X	X	X	X	X	X	X	X	1650
X	X	X	X	X	X	X	X	X	1683
X	X	X	X	X	X	X	X	X	1716
X	X	X	X	X	X	X	X	X	1749
X	X	X	X	X	X	X	X	X	1782
X	X	X	X	X	X	X	X	X	1815
X	X	X	X	X	X	X	X	X	1848
X	X	X	X	X	X	X	X	X	1881
X	X	X	X	X	X	X	X	X	1914
X	X	X	X	X	X	X	X	X	1947
X	X	X	X	X	X	X	X	X	1980
X	X	X	X	X	X	X	X	X	2013
X	X	X	X	X	X	X	X	X	2046
X	X	X	X	X	X	X	X	X	2079
X	X	X	X	X	X	X	X	X	2112
X	X	X	X	X	X	X	X	X	2145
X	X	X	X	X	X	X	X	X	2178
X	X	X	X	X	X	X	X	X	2211
X	X	X	X	X	X	X	X	X	2244
X	X	X	X	X	X	X	X	X	2277
X	X	X	X	X	X	X	X	X	2310
X	X	X	X	X	X	X	X	X	2343
X	X	X	X	X	X	X	X	X	2376
X	X	X	X	X	X	X	X	X	2409
X	X	X	X	X	X	X	X	X	2442
X	X	X	X	X	X	X	X	X	2475
X	X	X	X	X	X	X	X	X	2508
X	X	X	X	X	X	X	X	X	2541
X	X	X	X	X	X	X	X	X	2574
X	X	X	X	X	X	X	X	X	2607
X	X	X	X	X	X	X	X	X	2640
X	X	X	X	X	X	X	X	X	2673
X	X	X	X	X	X	X	X	X	2706
X	X	X	X	X	X	X	X	X	2739
X	X	X	X	X	X	X	X	X	2772
X	X	X	X	X	X	X	X	X	2805
X	X	X	X	X	X	X	X	X	2838
X	X	X	X	X	X	X	X	X	2871
X	X	X	X	X	X	X	X	X	2904
X	X	X	X	X	X	X	X	X	2937
X	X	X	X	X	X	X	X	X	2970
X	X	X	X	X	X	X	X	X	3003
X	X	X	X	X	X	X	X	X	3036
X	X	X	X	X	X	X	X	X	3069
X	X	X	X	X	X	X	X	X	3102
X	X	X	X	X	X	X	X	X	3135
X	X	X	X	X	X	X	X	X	3168
X	X	X	X	X	X	X	X	X	3201
X	X	X	X	X	X	X	X	X	3234
X	X	X	X	X	X	X	X	X	3267
X	X	X	X	X	X	X	X	X	3300
X	X	X	X	X	X	X	X	X	3333
X	X	X	X	X	X	X	X	X	3366
X	X	X	X	X	X	X	X	X	3399
X	X	X	X	X	X	X	X	X	3432
X	X	X	X	X	X	X	X	X	3465
X	X	X	X	X	X	X	X	X	3498
X	X	X	X	X	X	X	X	X	3531
X	X	X	X	X	X	X	X	X	3564
X	X	X	X	X	X	X	X	X	3597
X	X	X	X	X	X	X	X	X	3630
X	X	X	X	X	X	X	X	X	3663
X	X	X	X	X	X	X	X	X	3696
X	X	X	X	X	X	X	X	X	3729
X	X	X	X	X	X	X	X	X	3762
X	X	X	X	X	X	X	X	X	3795
X	X	X	X	X	X	X	X	X	3828
X	X	X	X	X	X	X	X	X	3861
X	X	X	X	X	X	X	X	X	3894
X	X	X	X	X	X	X	X	X	3927
X	X	X	X	X	X	X	X	X	3960
X	X	X	X	X	X	X	X	X	3993
X	X	X	X	X	X	X	X	X	4026
X	X	X	X	X	X	X	X	X	4059
X	X	X	X	X	X	X	X	X	4092
X	X	X	X	X	X	X	X	X	4125
X	X	X	X	X	X	X	X	X	4158
X	X	X	X	X	X	X	X	X	4191
X	X	X	X	X	X	X	X	X	4224
X	X	X	X	X	X	X	X	X	4257
X	X	X	X	X	X	X	X	X	4290
X	X	X	X	X	X	X	X	X	4323
X	X	X	X	X	X	X	X	X	4356
X	X	X	X	X	X	X	X	X	4389
X	X	X	X	X	X	X	X	X	4422
X	X	X	X	X	X	X	X	X	4455
X	X	X	X	X	X	X	X	X	4488
X	X	X	X	X	X	X	X	X	4521
X	X	X	X	X	X	X	X	X	4554
X	X	X	X	X	X	X	X	X	4587
X	X	X	X	X	X	X	X	X	4620
X	X	X	X	X	X	X	X	X	4653
X	X	X	X	X	X	X	X	X	4686
X	X	X	X	X	X	X	X	X	4719
X	X	X	X	X	X	X	X	X	4752
X	X	X	X	X	X	X	X	X	4785
X	X	X	X	X	X	X	X	X	4818
X	X	X	X	X	X	X	X	X	4851
X	X	X	X	X	X	X	X	X	4884
X	X	X	X	X	X	X	X	X	4917
X	X	X	X	X	X	X	X	X	4950
X	X	X	X	X	X	X	X	X	4983
X	X	X	X	X	X	X	X	X	5016
X	X	X	X	X	X	X	X	X	5049
X	X	X	X	X	X	X	X	X	5082
X	X	X	X	X	X	X	X	X	5115

The center numbers of this chart (1-511) represent a DMX address. The "X"s and "O"s along the top and side of the chart represent dip switch position ("X" for off and "O" for on). Find your desired DMX address from the center chart. Identify the position for dip switches 1-5 from the chart on the left and dip switches 6-9 from the chart on the top. Adjust the dip switches on your fixture to match the position settings of the chart. For fixtures with 10 dip switches; dip switch 10 is reserved for special functions.

**1-YEAR LIMITED WARRANTY**

A. American Dj® hereby warrants, to the original purchaser, American Dj® products to be free of manufacturing defects in material and workmanship for a period of 1 Year (365 days) from the date of purchase. This warranty shall be valid only if the product is purchased within the United States of America, including possessions and territories. It is the owner's responsibility to establish the date and place of purchase by acceptable evidence, at the time service is sought.

B. For warranty service, send the product only to the American Dj® factory. All shipping charges must be pre-paid. If the requested repairs or service (including parts replacement) are within the terms of this warranty, American Dj® will pay return shipping charges only to a designated point within the United States. If the entire instrument is sent, it must be shipped in its original package. No accessories should be shipped with the product. If any accessories are shipped with the product, American Dj® shall have no liability whatsoever for loss of or damage to any such accessories, nor for the safe return thereof.

C. This warranty is void if the serial number has been altered or removed; if the product is modified in any manner which American Dj® concludes, after inspection, affects the reliability of the product; if the product has been repaired or serviced by anyone other than the American Dj® factory unless prior written authorization was issued to purchaser by American Dj®; if the product is damaged because not properly maintained as set forth in the instruction manual.

D. This is not a service contract, and this warranty does not include maintenance, cleaning or periodic check-up. During the period specified above, American Dj® will replace defective parts at its expense, and will absorb all expenses for warranty service and repair labor by reason of defects in material or workmanship. The sole responsibility of American Dj® under this warranty shall be limited to the repair of the product, or replacement thereof, including parts, at the sole discretion of American Dj®. All products covered by this warranty were manufactured after January 1, 1990, and bear identifying marks to that effect.

E. American Dj® reserves the right to make changes in design and/or improvements upon its products without any obligation to include these changes in any products theretofore manufactured.

F. No warranty, whether expressed or implied, is given or made with respect to any accessory supplied with products described above. Except to the extent prohibited by applicable law, all implied warranties made by American Dj® in connection with this product, including warranties of merchantability or fitness, are limited in duration to the warranty period set forth above. And no warranties, whether expressed or implied, including warranties of merchantability or fitness, shall apply to this product after said period has expired. The consumer's and/or Dealer's sole remedy shall be such repair or replacement as is expressly provided above; and under no circumstances shall American Dj® be liable for any loss or damage, direct or consequential, arising out of the use of, or inability to use, this product.

G. This warranty is the only written warranty applicable to American Dj® Products and supersedes all prior warranties and written descriptions of warranty terms and conditions heretofore published.

H. Lamps are not covered under this or any other warranty, either written or implied.

## **Technical Specifications:**

**Model:**

**Flight Moon™**

**Lamps:**

ZB-JCR H5 15v/150w

**Voltage:**

120v/60Hz or 220v/50Hz

(Voltage is preset at the factory)  
20"(H) x 8.5"(W) x 9.25"(D)

with yoke collapsed

**Dimensions:**

7 Colors, plus White

**Colors**

25 Lbs.

**Weight:**

5 A GMA (120v)/3A GMA (220v)

**Fuse:**

None

**Duty Cycle:**

2 Channels

**DMX:**

Yes

**Sound Active:**

Any Safe, Secure Position

**Working Position:**

Fan Cooled

**Ventilation:**

1 Year (365 days)

**Warranty:**

**Please Note:** Specifications and improvements in the design of this unit and this manual are subject to change without any prior written notice.

A Division of the American DJ® Group of Companies

©American DJ® World Headquarters:

4295 Charter Street Los Angeles, CA 90058 USA

Tel: 323-582-2650 Fax: 323-582-2610

Web: [www.americandj.com](http://www.americandj.com) E-mail: [info@americandj.com](mailto:info@americandj.com)

## Free Manuals Download Website

<http://myh66.com>

<http://usermanuals.us>

<http://www.somanuals.com>

<http://www.4manuals.cc>

<http://www.manual-lib.com>

<http://www.404manual.com>

<http://www.luxmanual.com>

<http://aubethermostatmanual.com>

Golf course search by state

<http://golfingnear.com>

Email search by domain

<http://emailbydomain.com>

Auto manuals search

<http://auto.somanuals.com>

TV manuals search

<http://tv.somanuals.com>