



# TV Tuner

*My Cinema Series*

**User Manual**

E5440

Eighth Edition V8

February 2010

**Copyright © 2010 ASUSTeK Computer Inc. All Rights Reserved.**

No part of this manual, including the products and software described in it, may be reproduced, transmitted, transcribed, stored in a retrieval system, or translated into any language in any form or by any means, except documentation kept by the purchaser for backup purposes, without the express written permission of ASUSTeK Computer Inc. ("ASUS").

Product warranty or service will not be extended if: (1) the product is repaired, modified or altered, unless such repair, modification or alteration is authorized in writing by ASUS; or (2) the serial number of the product is defaced or missing.

ASUS PROVIDES THIS MANUAL "AS IS" WITHOUT WARRANTY OF ANY KIND, EITHER EXPRESS OR IMPLIED, INCLUDING BUT NOT LIMITED TO THE IMPLIED WARRANTIES OR CONDITIONS OF MERCHANTABILITY OR FITNESS FOR A PARTICULAR PURPOSE. IN NO EVENT SHALL ASUS, ITS DIRECTORS, OFFICERS, EMPLOYEES OR AGENTS BE LIABLE FOR ANY INDIRECT, SPECIAL, INCIDENTAL, OR CONSEQUENTIAL DAMAGES (INCLUDING DAMAGES FOR LOSS OF PROFITS, LOSS OF BUSINESS, LOSS OF USE OR DATA, INTERRUPTION OF BUSINESS AND THE LIKE), EVEN IF ASUS HAS BEEN ADVISED OF THE POSSIBILITY OF SUCH DAMAGES ARISING FROM ANY DEFECT OR ERROR IN THIS MANUAL OR PRODUCT.

SPECIFICATIONS AND INFORMATION CONTAINED IN THIS MANUAL ARE FURNISHED FOR INFORMATIONAL USE ONLY, AND ARE SUBJECT TO CHANGE AT ANY TIME WITHOUT NOTICE, AND SHOULD NOT BE CONSTRUED AS A COMMITMENT BY ASUS. ASUS ASSUMES NO RESPONSIBILITY OR LIABILITY FOR ANY ERRORS OR INACCURACIES THAT MAY APPEAR IN THIS MANUAL, INCLUDING THE PRODUCTS AND SOFTWARE DESCRIBED IN IT.

Products and corporate names appearing in this manual may or may not be registered trademarks or copyrights of their respective companies, and are used only for identification or explanation and to the owners' benefit, without intent to infringe.

# Contents

Notices.....	v
Safety information .....	vi
About this guide .....	vii

## Chapter 1: Hardware information

1.1	System requirements.....	1-2
1.2	Card/Box layout.....	1-2
1.3	Before you proceed .....	1-3
1.4	Installation .....	1-4
1.4.1	Installing the ASUS TV Tuner Card.....	1-4
1.4.2	Installing the ASUS USB TV Box .....	1-5
1.4.3	Installing the ASUS TV Express Card.....	1-5
1.5	Connecting cables and devices.....	1-6

## Chapter 2: Software information

2.1	Device driver installation.....	2-2
2.1.1	Installing Microsoft® DirectX®.....	2-2
2.1.2	Installing the driver.....	2-3
2.1.3	Uninstalling the driver .....	2-6
2.2	CyberLink® PowerCinema ( <i>optional</i> ).....	2-7
2.3	Arcsoft TotalMedia ( <i>optional</i> ).....	2-7
2.4	Presto! PVR ( <i>optional</i> ).....	2-8
2.5	ASUS Splendid Technology .....	2-8
2.6	ASUS VideoSecurity Online .....	2-9
2.7	ASUS EZVCR .....	2-10
2.8	ASUS Eee PC Installation.....	2-11
2.9	ASUS Plug and Play TV ( <i>optional</i> ) .....	2-12
2.10	ASUS Pop-up TV ( <i>optional</i> ) .....	2-12
2.11	ASUS GadgeTV .....	2-12

## Appendix: Reference information

A.1	Remote control ( <i>optional</i> ) .....	A-2
A.1.1	39-key remote control .....	A-2
A.1.2	21-key remote control .....	A-4
A.1.3	46-key remote control .....	A-6
A.1.4	41-key remote control .....	A-8

## Contents

A.2	International TV systems and standards (Analog TV).....	A-11
A.3	International TV systems and standards (DVB-T).....	A-13
A.4	International TV systems and standards (ATSC).....	A-14
A.5	International TV systems and standards (DMB-TH) .....	A-14

## Notices

### Federal Communications Commission Statement

This device complies with Part 15 of the FCC Rules. Operation is subject to the following two conditions:

- This device may not cause harmful interference, and
- This device must accept any interference received including interference that may cause undesired operation.

This equipment has been tested and found to comply with the limits for a Class B digital device, pursuant to Part 15 of the FCC Rules. These limits are designed to provide reasonable protection against harmful interference in a residential installation. This equipment generates, uses and can radiate radio frequency energy and, if not installed and used in accordance with manufacturer's instructions, may cause harmful interference to radio communications. However, there is no guarantee that interference will not occur in a particular installation. If this equipment does cause harmful interference to radio or television reception, which can be determined by turning the equipment off and on, the user is encouraged to try to correct the interference by one or more of the following measures:

- Reorient or relocate the receiving antenna.
- Increase the separation between the equipment and receiver.
- Connect the equipment to an outlet on a circuit different from that to which the receiver is connected.
- Consult the dealer or an experienced radio/TV technician for help.



---

The use of shielded cables for connection of the monitor to the graphics card is required to assure compliance with FCC regulations. Changes or modifications to this unit not expressly approved by the party responsible for compliance could void the user's authority to operate this equipment.

---

### Canadian Department of Communications Statement

This digital apparatus does not exceed the Class B limits for radio noise emissions from digital apparatus set out in the Radio Interference Regulations of the Canadian Department of Communications.

**This class B digital apparatus complies with Canadian ICES-003.**

### REACH

Complying with the REACH (Registration, Evaluation, Authorisation, and Restriction of Chemicals) regulatory framework, we published the chemical substances in our products at ASUS REACH website at <http://green.asus.com/english/REACH.htm>.

# Safety information

## Electrical safety

- To prevent electric shock hazard, disconnect the power cable from the electric outlet before relocating the system.
- When adding or removing devices to or from the system, ensure that the power cables for the devices are unplugged before the signal cables are connected. If possible, disconnect all power cables from the existing system before you add a device.
- Before connecting or removing signal cables from the motherboard, ensure that all power cables are unplugged.

## Operation safety

- The ASUS My Cinema U3000 TV Box becomes hot after prolonged use. Handle the TV Box with care to prevent discomfort from heat exposure. The heat will not affect the operation of the TV box so you may continue using it as desired.
- Before installing the motherboard and adding devices on it, carefully read all the documentation that comes with the package.
- Before using the product, ensure that all cables are correctly connected and the power cables are not damaged. If you detect any damage, contact your dealer immediately.
- To avoid short circuits, keep paper clips, screws, and staples away from connectors, slots, sockets, and circuitry.
- Avoid dust, humidity, and extreme temperatures. Do not place this product in a location where it may get wet.
- Place this product on a flat and stable surface.
- We recommend that you use this product in environments with an ambient temperature below 35°C.
- If you encounter technical problems with this product, contact a qualified service technician or your retailer.



---

**DO NOT** throw this product in municipal waste. This product has been designed to enable proper reuse of parts and recycling. This symbol of the crossed out wheeled bin indicates that the product (electrical and electronic equipment) should not be placed in municipal waste. Check local regulations for disposal of electronic products.

---



---

**DO NOT** throw the battery in municipal waste. This symbol of the crossed out wheeled bin indicates that the battery should not be placed in municipal waste.

---

### *Lithium-Ion Battery Warning*

**CAUTION:** Danger of explosion if battery is incorrectly replaced. Replace only with the same or equivalent type recommended by the manufacturer. Dispose of used batteries according to the manufacturer's instructions.

## About this guide

This user guide contains the information you need when installing and configuring the ASUS TV Tuner Card/Box/Stick.

## How this guide is organized

This user guide contains the following parts:

- **Chapter 1: Hardware information**  
This chapter lists the hardware setup procedures that you have to perform when installing the ASUS TV Tuner Card/Box/Stick.
- **Chapter 2: Software information**  
This chapter gives information on how to install device drivers and applications for the ASUS TV Tuner Card/Box/Stick.
- **Appendix: Reference information**  
This chapter includes information on the remote controller, key table, and international TV systems and standards.

## Where to find more information

Refer to the following sources for additional information and for product and software updates.

1. **ASUS website**  
The ASUS website provides updated information on ASUS hardware and software products.
2. **Optional documentation**  
Your product package may include optional documentation, such as warranty flyers, that may have been added by your dealer. These documents are not part of the standard package.

## Conventions used in this guide

To make sure that you perform certain tasks properly, take note of the following symbols used throughout this manual.



**DANGER/WARNING:** Information to prevent injury to yourself when trying to complete a task.



**CAUTION:** Information to prevent damage to the components when trying to complete a task.



**IMPORTANT:** Instructions that you **MUST** follow to complete a task.



**NOTE:** Tips and additional information to help you complete a task.



# Chapter 1

This chapter lists the hardware setup procedures that you have to perform when installing the ASUS TV Tuner.

# Hardware information

## 1.1 System requirements

Before installing the ASUS TV Tuner Card/Box/Stick, ensure that your system meets the following requirements:

Item	Description
<b>Slot</b>	For PCI TV tuner card : One available PCI slot For PCI-E TV tuner card: One available PCI Express slot For TV box: One available USB 2.0 port For TV express card: One available Express Card port
<b>Processor</b>	For notebook: Intel® Pentium® M 1.3GHz or above is recommended For PC: Intel® Pentium® 4 2.6GHz or above is recommended
<b>Memory</b>	For XP/MCE: 512MB or higher is recommended For Vista Basic/Vista Premium: 1GB or higher is recommended
<b>Graphics card</b>	Graphics card with at least 32MB video memory
<b>Optical drive</b>	CD-ROM drive for driver installation
<b>Hard disk space</b>	At least 1GB free hard disk space For XP/MCE: 1GB or higher is recommended For Vista Basic/Vista Premium: 15GB or higher is recommended
<b>Audio</b>	Microsoft® DirectX-compatible audio device
<b>Operating system</b>	Microsoft® Windows® Vista Premium/Vista Basic/XP/MCE 2005
<b>Software/utilities</b>	Microsoft® DirectX 9.0 or higher Microsoft® Windows® Media Player 9 or higher

## 1.2 Card/Box layout

Click [here](#) for the ASUS TV Tuner Card/Box/Stick layout.



---

Drawings are for reference only. The actual device layout may differ.

---

## 1.3 Before you proceed

Take note of the following precautions before you install the ASUS TV Tuner Card/Box/Stick.



- 
- Unplug the power cord from the wall socket before touching any component.
  - Use a grounded wrist strap or touch a safely grounded object or a metal object, such as the power supply case, before handling components to avoid damaging them due to static electricity.
  - Hold components by the edges to avoid touching the ICs on them.
  - Keep all components, such as the host adapter, in their antistatic bag until you are ready to install them. Likewise, whenever you uninstall any component, place it on a grounded antistatic pad or in the bag that came with it.
  - Before you install or remove any component, ensure that the ATX power supply is switched off or the power cord is detached from the power supply. Failure to do so may cause severe damage to the motherboard and peripherals.
-

## 1.4 Installation

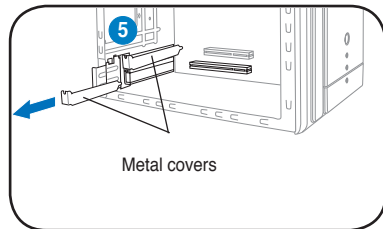


- You can install the ASUS TV Tuner Card only on a motherboard with a PCI/PCIe slot.
- Illustrations in this section are for reference only. Your system chassis and configuration may differ from what is shown.

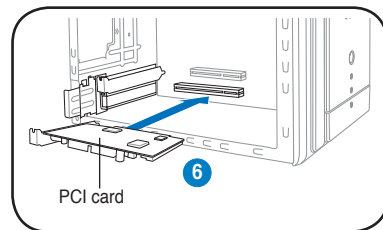
### 1.4.1 Installing the ASUS TV Tuner Card

To install the ASUS TV Tuner Card:

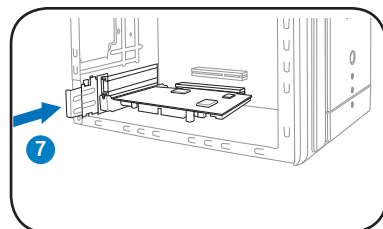
1. Unplug the power cord.
2. Remove the system unit cover. Refer to the documentation that came with your system for detailed instructions.
3. Locate the PCI bus expansion slot. Ensure that this slot is unobstructed.
4. Unlock the expansion card cover.
5. Remove the metal cover opposite the slot that you intend to use.



6. Align the card connector with the slot and press firmly until the card is completely seated on the slot.



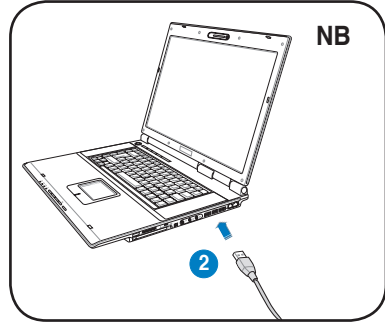
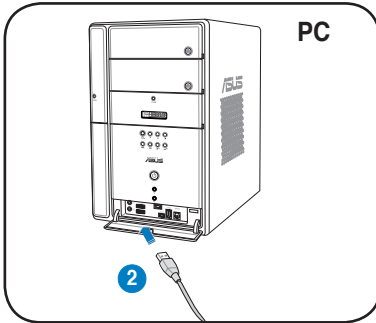
7. Replace the expansion card lock to secure the card to the chassis.



## 1.4.2 Installing the ASUS USB TV Box

To install the ASUS USB TV Box:

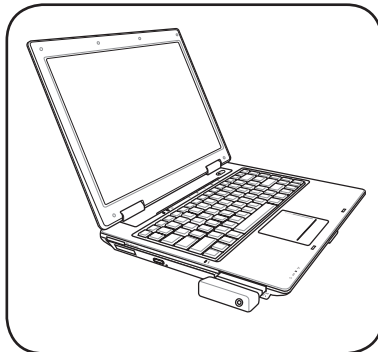
1. Place the ASUS USB TV Box on a flat and stable surface close to your computer.
2. Connect the USB cord A series plug to a USB 2.0 port on your computer.



## 1.4.3 Installing the ASUS TV Express Card

To install the ASUS TV Express Card:

1. Place your notebook or desktop computer on a flat and stable surface.
2. Locate the Express Card port.
3. Connect the ASUS TV Express Card to the Express Card port on your computer.



## 1.5 Connecting cables and devices

---



There are various types of cable TV (CATV) and antenna connections. Consult your dealer for the type of adapter, splitter, A/B switch, or combiner that may be required when connecting the ASUS TV Tuner Card/Box/Stick to devices.

---

The ASUS TV Tuner Card/Box/Stick can receive up to 100 channels. If you do not have a CATV system, you may use an indoor or outdoor antenna that carries only VHF channels, UHF channels, or both VHF and UHF channels to connect to the ASUS TV Tuner Card/Box.

Click [here](#) for more information on connecting cables and devices.

# Chapter 2

This chapter gives information on how to install drivers and applications for the ASUS TV Tuner.

# Software information

## 2.1 Device driver installation

You need to install the device drivers on your computer so you can use the ASUS TV Tuner Card/Box/Stick. Refer to this chapter when installing the device drivers.



- The setup screens in this chapter are for reference only. They may not exactly match the contents displayed on your screen.
- The contents of the Support CD are subject to change at any time without notice.

### 2.1.1 Installing Microsoft® DirectX®

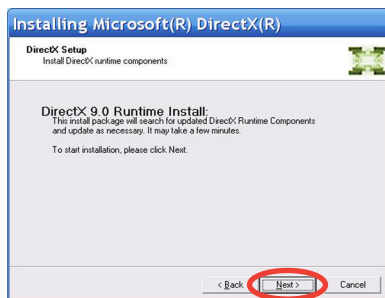
Microsoft® Direct® X allows 3D hardware acceleration support in Windows® 98, Windows® 2000, Windows® XP, and Windows® Vista OS.



- Ensure that you install Microsoft® DirectX® before installing the ASUS TV Tuner Card/Box/Stick driver.
- For software MPEG support in Windows® 98, you must first install Microsoft® Direct® X, then install a MPEG-compliant video player.

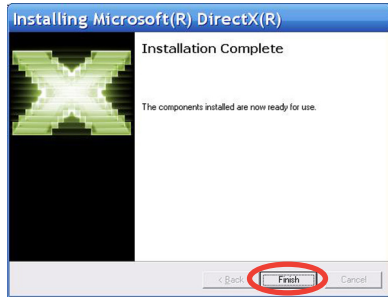
To install Microsoft® DirectX®:

1. Place the Installation CD into the optical drive. An autorun screen appears if Autorun is enabled on your computer. You may also double-click **Setup32.exe** from the root directory to run the Installation CD.
2. Read the Microsoft® End User License Agreement. Click **I accept the agreement**, then click **Next**.
3. Click **Next** to start the installation. The installation program automatically installs the DirectX® 9.0 runtime libraries to your system.





4. This message appears when the setup is completed. Click **Finish** to complete the installation process.



## 2.1.2 Installing the driver

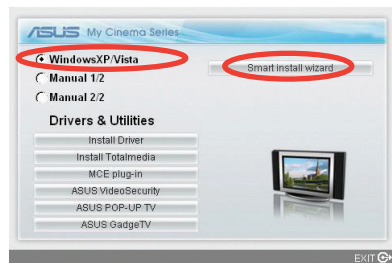
### Installing the driver automatically

To install the driver and applications automatically:

1. Start your computer.
2. Windows® automatically detects the ASUS TV Tuner Card/Box/ Stick and displays the **Found New Hardware Wizard** window. Click **Cancel**.



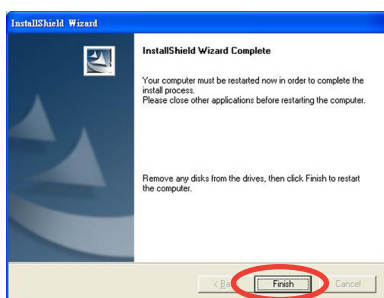
3. Place the Support CD into the optical drive. From the autorun screen, select **Windows XP/Vista**, then click **Smart Install wizard**. This wizard automatically installs all the driver and applications for your ASUS TV Tuner Card/Box/Stick and synchronizes the TV country settings with your OS.



- Click **Install now!**. A progress bar appears to indicate the installation status.



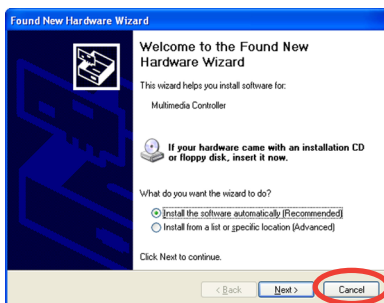
- Click **Finish** to complete the installation process.



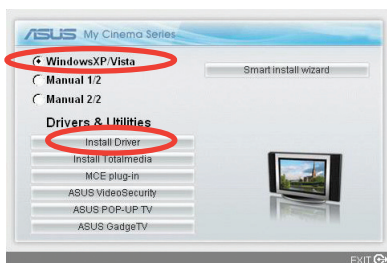
## Installing the driver manually

To install the driver and applications manually:

- Start your computer.
- Windows® automatically detects the ASUS TV Tuner Card/Box/ Stick and displays the **Found New Hardware Wizard** window. Click **Cancel**.



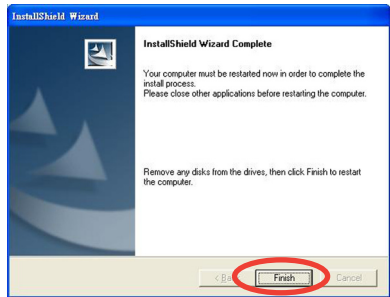
- Place the Support CD into the optical drive. From the autorun screen, select **Windows XP/ Vista**, then click **Install Driver**.



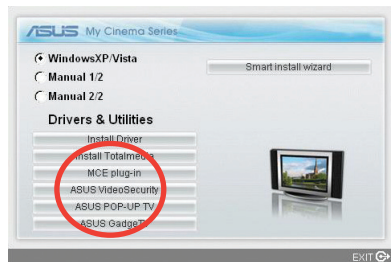
- Click **Install now!**. A progress bar appears to indicate the installation status.



- Click **Finish** to complete the driver installation process.



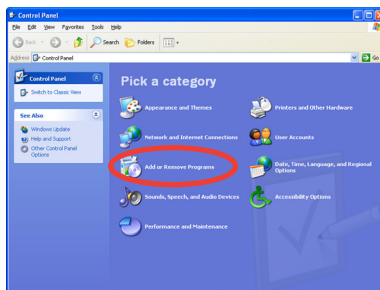
- Select the application that you want to use on your computer. Follow the onscreen instructions to complete the installation.



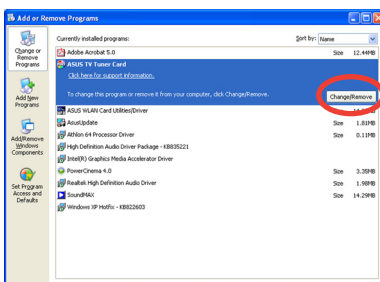
## 2.1.3 Uninstalling the driver

If you want to update the driver, or if you no longer need them, refer to this section to completely uninstall the drivers from your system to save disk space.

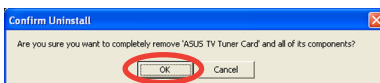
1. Click **Start > Control Panel**.
2. Double-click **Add or Remove Programs**.



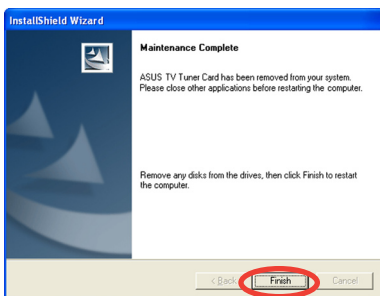
3. Select **ASUS TV Tuner Card**.
4. Click **Change/Remove**.



5. Click **OK**.



6. Close other applications and remove any disks from the drives. Click **Finish** to restart your computer.



## 2.2 CyberLink® PowerCinema (optional)

---



If you are running Windows® MCE/Vista Premium, you cannot watch TV using the CyberLink® PowerCinema and MCE application at the same time.

---

This application allows you to watch TV and DVDs, listen to FM radio or music CDs, or browse pictures stored in your computer. Use the mouse or the remote control to navigate through the user interface. Refer to **Appendix A.1** for details on the remote control.



For more information on this application, refer to the Cyberlink PowerCinema User's Guide in the Support CD.

---

## 2.3 Arcsoft TotalMedia (optional)

---



If you are running Windows® MCE/Vista Premium, you cannot watch TV using the Arcsoft TotalMedia and MCE application at the same time.

---

This application allows you to watch TV and DVDs, listen to FM radio or music CDs, or browse pictures stored on your computer. Use the mouse or the remote control to navigate through the user interface. Refer to **Appendix A.1** for details on the remote control.

Using the ASUS PE9400 Combo:

- To watch NTSC TV, select **ASUS PE9400 BDA Analog TV Tuner** to scan channel in TV setting menu.
  - To watch ATSC program, select **ASUS PE9400 BDA ATSC Tuner**, then select antenna to scan channel in TV setting menu.
  - To watch Clear Qam program, select **ASUS PE9400 BDA ATSC Tuner**, then select cable to scan channel in TV setting menu.
- 



For more information on this application, refer to the Arcsoft TotalMedia User Guide in the Support CD.

---

## 2.4 Presto! PVR (optional)



If you are running Windows® MCE/Vista Premium, you cannot watch TV using the Presto! PVR and MCE application at the same time.

This application allows you to watch TV. Use the mouse or the remote control to navigate through the user interface. Refer to **Appendix A.1** for details on the remote control.



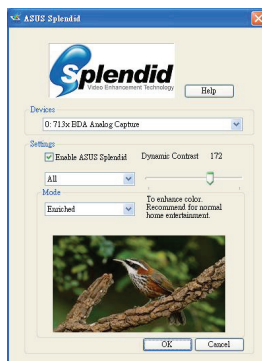
For more information on this application, refer to the Presto! PVR User Guide in the Support CD.

## 2.5 ASUS Splendid Technology

ASUS Splendid Analog TV Video Enhancement Technology takes computer graphics capabilities to the next level by automatically enhancing image quality, depth, color intensity, and image details for the best visual results. With ASUS Splendid meeting high visual demands, watching movies and TV on your computer can indeed be a splendid experience.



ASUS Splendid Video Enhancement Technology makes colors come alive and brings out optimum brightness and contrast levels even in dark scenes. You may choose from four viewing profiles for different video viewing conditions. Select the profile that best suits your viewing environment: Enriched (Standard), Vivid Color (Color-enhanced), Theater (Cinematic effects), and Crystal Clear (Enhanced contrast).



## 2.6 ASUS VideoSecurity Online

VideoSecurity Online is a powerful monitoring and motion-detecting software. With video capture devices such as CCD, V8, digital Hi-8 and others, you can use VideoSecurity Online to:

- find intruders;
- monitor your environment;
- detect changes in a specified location; and
- know in advance who your visitors are.

Upon detection of any variation, VideoSecurity Online will do the following:

- Save the date/time information on when the condition started, and when to release tracing to a database file (watchdog.mdb).
- Capture the condition detected and save it into a bitmap file with reference to an image that represents the normal situation before VideoSecurity Online started detecting the variation. You may view any image processing software to view, modify, or distribute the image.



---

This database file is saved in the Programs folder.

---

VideoSecurity Online also lets you choose from four options on how to handle the variation or unusual condition detected.

## 2.7 ASUS EZVCR

ASUS EZVCR is a program that allows you to watch and record live TV on your PC or notebook. ASUS EZVCR also lets you to listen to radio programs on systems that support this function.



---

For more information, check the help file in EZVCR.

---

The image below shows the main ASUS EZVCR user interface window.



### System requirements

#### Software

- Microsoft® Windows® XP with SP2 and Microsoft® DirectX 9 or above.
- ASUS DVD 6.0

#### Hardware

- ASUS TV Tuner device
- Sound card
- Processor: Intel® Pentium 4 2GHz or above, AMD K7-2000+ or above, Intel® Centrino 1G or above
- Memory: At least 256 MB
- VGA card: At least 64 MB RAM
- Hard disk space: At least 500 MB free hard disk space



## 2.8 ASUS Eee PC Installation

For ASUS Eee PC Linux OS, there are two ways to install drivers and applications: with or without Internet connection.

If you have Internet connection, follow these steps (recommended):

1. Connect to the Internet.
2. Select the **Setting** tab, and click the **Add/Remove** icon.
3. Select the **Play** tab, click the TV driver and TV application to install the driver and application.
4. Restart the Eee PC.

If you do not have Internet connection, follow these steps:

1. Copy the file to the home directory.
2. Press **Ctrl+Alt+T**.
3. In the console, type **sudo su** to get root privilege.
4. Type **tar xvzf dvbt-4eeepc.tar.gz**
5. Type **install-xxxx** to install the driver and application.
6. Reboot to apply the changes.



---

For ASUS Eee PC Microsoft® Windows® OS, refer to section **2.1: Device driver installation** to install drivers and applications.

---

After the installation, you can run the application from the icon displayed on the desktop.

Watching TV programs on your Eee PC:

1. Press **F1** to select the country when launching first time.
2. Press **F1** to select the scan channel.
3. Close the TV application to save the channels.
4. Restart the TV application and enjoy watching TV programs on your Eee PC.



---

The steps above are based on ASUS U3100 mini, and It might be different when using other ASUS TV product. Download the latest driver and read the instructions from the ASUS website at [www.asus.com](http://www.asus.com).

---

## 2.9 ASUS Plug and Play TV *(optional)*

ASUS Plug and Play TV is a user-friendly application that delivers better TV experience. With ASUS Plug and Play TV, you can watch TV programs by just plugging a USB dongle.

## 2.10 ASUS Pop-up TV *(optional)*

ASUS Pop-up TV is a user-friendly application that delivers better TV experience. With ASUS Pop-up TV, you can watch TV programs by just plugging a USB dongle.

## 2.11 ASUS GadgeTV

ASUS GadgeTV is a user-friendly application that allows you to watch TV, record TV, and play video files on the Windows® sidebar.

### System requirements

#### Windows® Vista

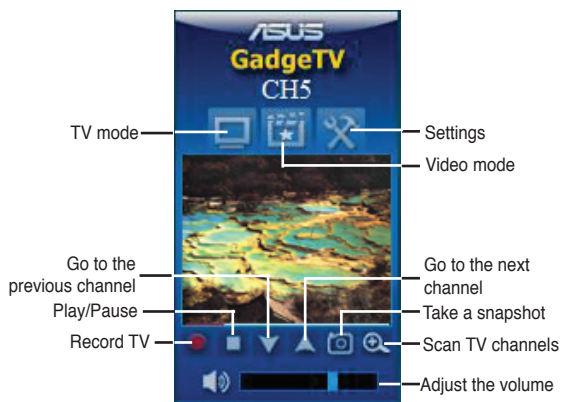
- ASUS TV Tuner device
- ASUS TV application

#### Windows® XP

- Google desktop
- ASUS TV Tuner device
- ASUS TV application

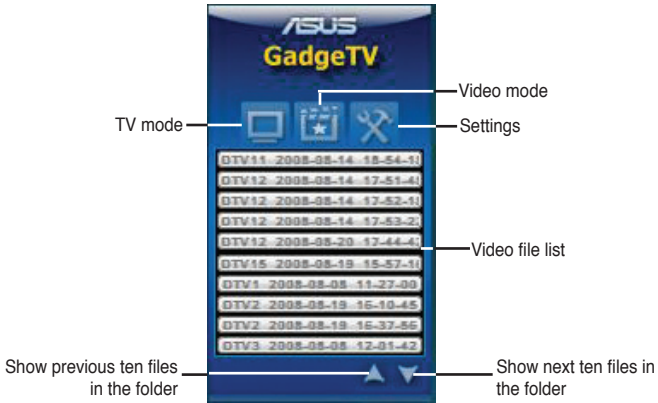
The pictures below show the main ASUS GadgeTV user interfaces.

### TV Mode

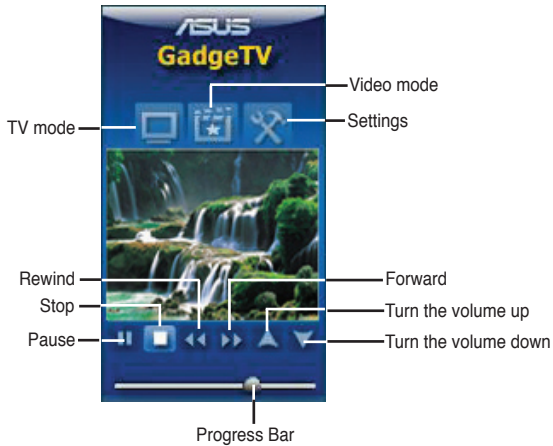


## Video mode

### • Video file list



### • Playback control





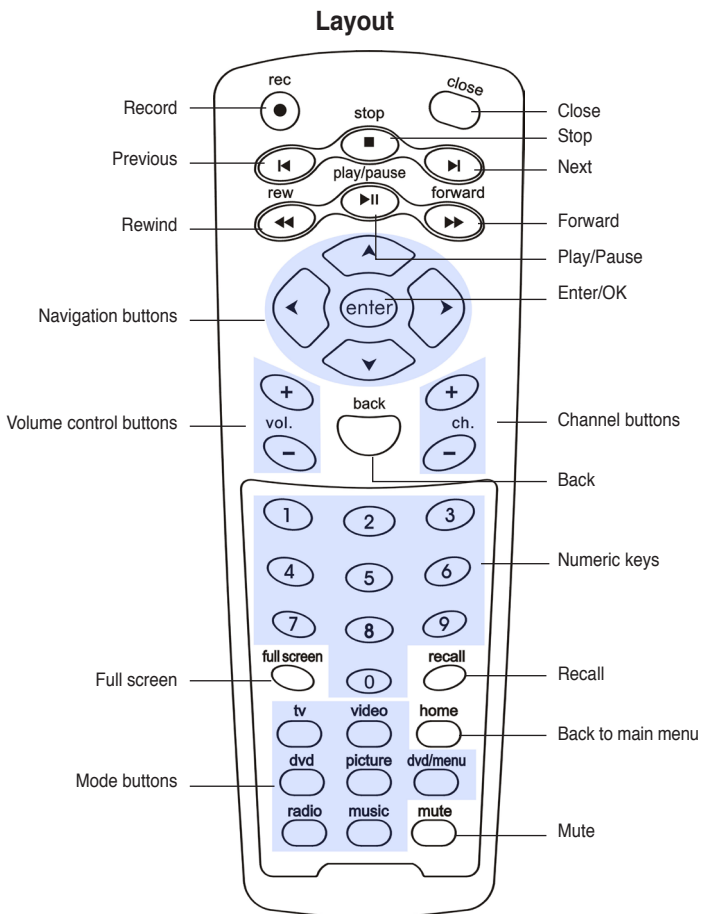
# Appendix

This chapter includes information on the optional remote control, key table, and international TV systems and standards.













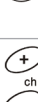








# Reference information

## A.1 Remote control (optional)








### A.1.1 39-key remote control



## Key table

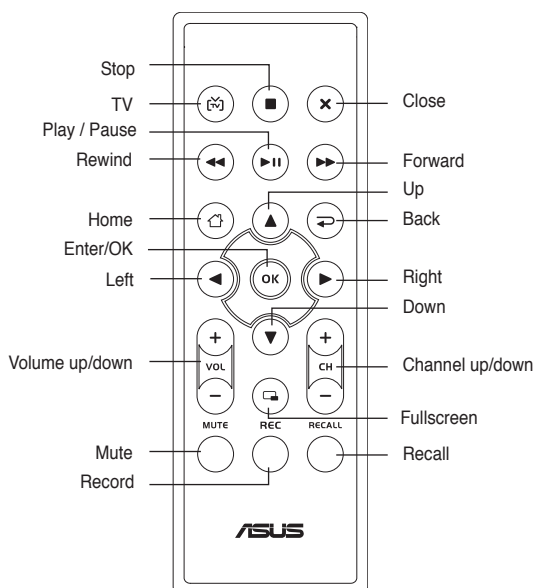
Button	Mode					
	TV	FM	DVD	VIDEO	PHOTO	MUSIC
 tv	TV mode	–	–	–	–	–
 radio	–	Radio mode	–	–	–	–
 dvd	–	–	DVD mode	–	–	–
 video	–	–	–	Video mode	–	–
 picture	–	–	–	–	Photo mode	–
 music	–	–	–	–	–	Music mode
 home	Back to main menu	Back to main menu	Back to main menu	Back to main menu	Back to main menu	Back to main menu
 dvd/menu	–	–	DVD menu	–	–	–
 mute	Mute	Mute	Mute	Mute	Mute	Mute
 full screen	Full screen	Full screen	Full screen	Full screen	Full screen	Full screen
 recall	Back to previous channel	–	–	–	–	–
 back	Back to previous page	Back to previous page	Back to previous page	Back to previous page	Back to previous page	Back to previous page
 ch. + –	Channel up/down	Search forward/backward	Next/previous chapter	–	–	–
 vol. + –	Volume up/down	Volume up/down	Volume up/down	Volume up/down	Volume up/down	Volume up/down
 0 ~ 9	0 ~9	0 ~9	0 ~9	–	–	–
 enter	Enter	Enter	Enter	Enter	Enter	Enter
	Up	Up	Up	Up	Up	Up
	Down	Down	Down	Down	Down	Down
	Left	Left	Left	Left	Left	Left
	Right	Right	Right	Right	Right	Right
 rec	Record	Record	Record	Record	Record	Record

(Continued on the next page)

Button	Mode					
	TV	FM	DVD	VIDEO	PHOTO	MUSIC
	Close app	Close app	Close app	Close app	Close app	Close app
	Stop	Stop	Stop	Stop	Stop	Stop
	Previous chapter	Previous chapter	Previous chapter	Previous chapter	Previous chapter	Previous chapter
	Next chapter	Next chapter	Next chapter	Next chapter	Next chapter	Next chapter
	Rewind	Rewind	Rewind	Rewind	Rewind	Rewind
	Forward	Forward	Forward	Forward	Forward	Forward
	Play/pause	Play/pause	Play/pause	Play/pause	Play/pause	Play/pause




















## A.1.2 21-key remote control

### Layout



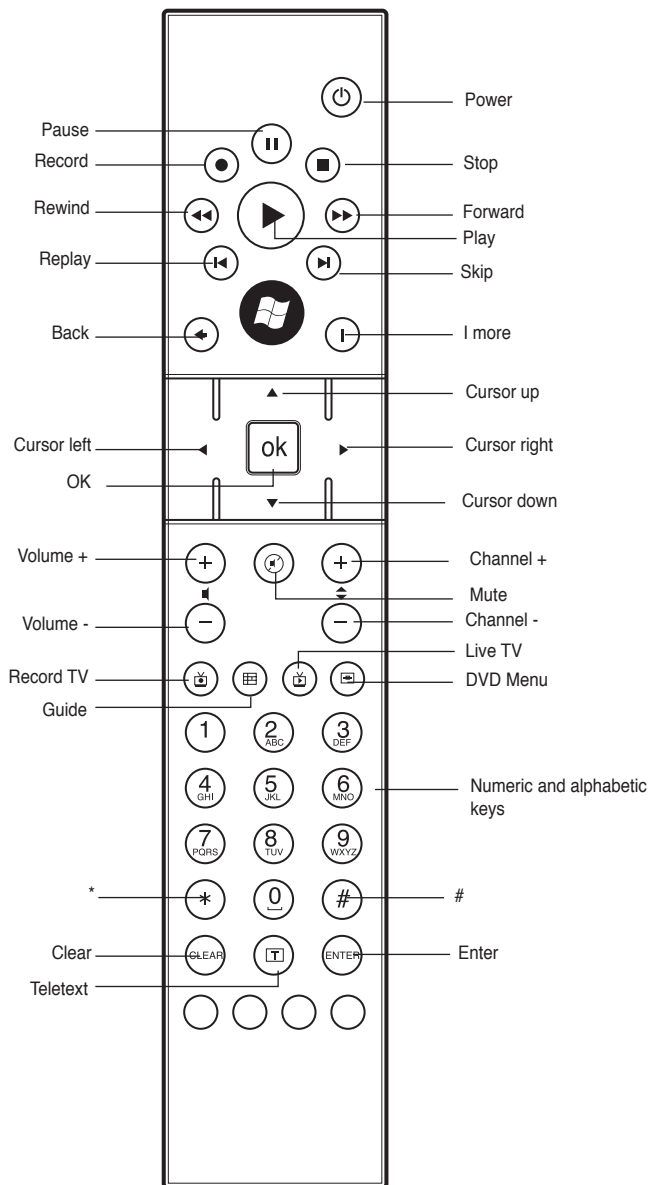


## Key table

Button	Mode					
	TV	FM	DVD	VIDEO	PHOTO	MUSIC
	TV mode	–	–	–	–	–
	Stop	Stop	Stop	Stop	Stop	Stop
	Close	Close	Close	Close	Close	Close
	Rewind	Rewind	Rewind	Rewind	Rewind	Rewind
	Play/Pause	Play/Pause	Play/Pause	Play/Pause	Play/Pause	Play/Pause
	Forward	Forward	Forward	Forward	Forward	Forward
	Back to main menu	Back to main menu	Back to main menu	Back to main menu	Back to main menu	Back to main menu
	Back to previous menu	Back to previous menu	Back to previous menu	Back to previous menu	Back to previous menu	Back to previous menu
	Channel up/down	Search forward/backward	Next/previous chapter	–	–	–
	Volume up/down	Volume up/down	Volume up/down	Volume up/down	Volume up/down	Volume up/down
	Enter/OK	Enter/OK	Enter/OK	Enter/OK	Enter/OK	Enter/OK
	Up	Up	Up	Up	Up	Up
	Down	Down	Down	Down	Down	Down
	Left	Left	Left	Left	Left	Left
	Right	Right	Right	Right	Right	Right
	Fullscreen	Fullscreen	Fullscreen	Fullscreen	Fullscreen	Fullscreen
	Record	Record	Record	Record	Record	Record
	Mute	Mute	Mute	Mute	Mute	Mute
	Back to previous channel	–	–	–	–	–

## A.1.3 46-key remote control

### Layout

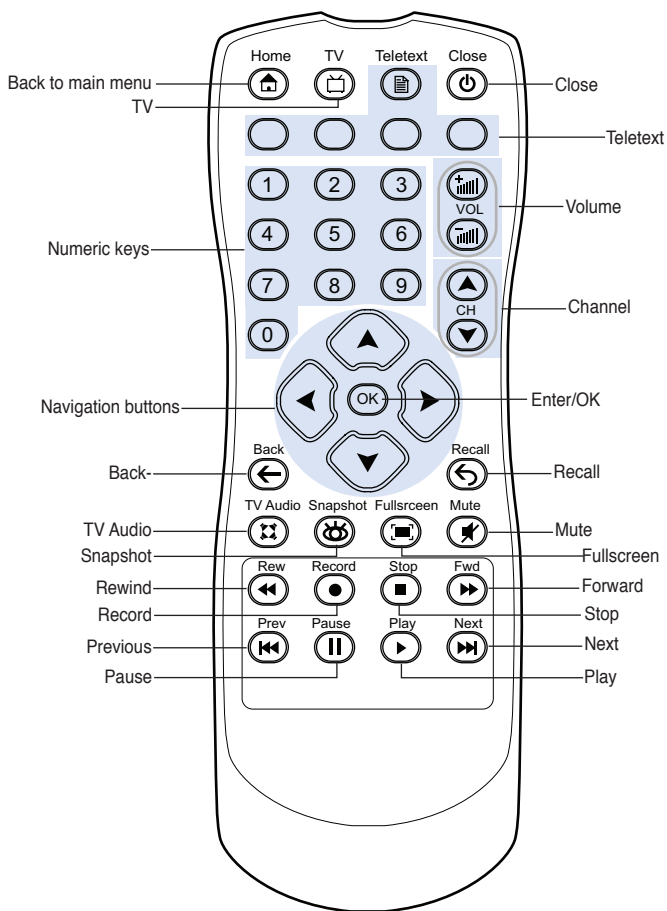


## Key table


















Button	Mode					
	TV	FM	DVD	VIDEO	PHOTO	MUSIC
	Power	Power	Power	Power	Power	Power
	Pause	Pause	Pause	Pause	Pause	Pause
	Stop	Stop	Stop	Stop	Stop	Stop
	Record	Record	Record	Record	Record	Record
	Rewind	Rewind	Rewind	Rewind	Rewind	Rewind
	Play	Play	Play	Play	Play	Play
	Forward	Forward	Forward	Forward	Forward	Forward
	Replay	Replay	Replay	Replay	Replay	Replay
	Skip	Skip	Skip	Skip	Skip	Skip
	I more	-	-	-	-	-
	Back to previous	Back to previous	Back to previous	Back to previous	Back to previous	Back to previous
	OK	OK	OK	OK	OK	OK
	Up	Up	Up	Up	Up	Up
	Right	Right	Right	Right	Right	Right
	Left	Left	Left	Left	Left	Left
	Down	Down	Down	Down	Down	Down
	Channel up/down	Search forward/backward	Next/previous chapter	-	-	-
	Volume up/down	Volume up/down	Volume up/down	Volume up/down	Volume up/down	Volume up/down
	Mute	Mute	Mute	Mute	Mute	Mute
	Record TV	-	-	-	-	-
	Guide	Guide	Guide	Guide	Guide	Guide
	TV mode	-	-	-	-	-
	Back to DVD menu	Back to DVD menu	Back to DVD menu	Back to DVD menu	Back to DVD menu	Back to DVD menu
	0~9	0~9	0~9	-	-	-
	Clear	Clear	-	-	-	-
	Teletext	-	-	-	-	-
	Enter	Enter	Enter	Enter	Enter	Enter

## A.1.4 41-key remote control










### Layout



## Key table

Button	Mode					
	TV	FM	DVD	VIDEO	PHOTO	MUSIC
Home 	Back to main menu	Back to main menu	Back to main menu	Back to main menu	Back to main menu	Back to main menu
TV 	TV Mode	-	-	-	-	-
Teletext 	Teletext	-	-	-	-	-
Close 	Close	Close	Close	Close	Close	Close
	0~9	0~9	0~9	-	-	-
	Volume up/down	Volume up/down	Volume up/down	Volume up/down	Volume up/down	Volume up/down
	Channel up/down	Search forward/backward	Next/previous chapter	-	-	-
	Up	Up	Up	Up	Up	Up
	Down	Down	Down	Down	Down	Down
	Left	Left	Left	Left	Left	Left
	Right	Right	Right	Right	Right	Right
	Enter/OK	Enter/OK	Enter/OK	Enter//OK	Enter//OK	Enter//OK
Back 	Back to previous	Back to previous	Back to previous	Back to previous	Back to previous	Back to previous
Recall 	Back to previous channel	Back to previous channel	Back to previous channel	Back to previous channel	Back to previous channel	Back to previous channel
TV Audio 	Stereo	-	-	-	-	-
Snapshot 	Snapshot	-	Snapshot	Snapshot	-	-
Fullscreen 	Fullscreen	-	Fullscreen	Fullscreen	Fullscreen	-

(Continued on the next page)

Button	Mode					
	TV	FM	DVD	VIDEO	PHOTO	MUSIC
Mute 	Mute	Mute	Mute	Mute	Mute	Mute
Rew 	Rewind	Rewind	Rewind	Rewind	Rewind	Rewind
Record 	Record	Record	Record	Record	Record	Record
Stop 	Stop	Stop	Stop	Stop	Stop	Stop
Fwd 	Forward	Forward	Forward	Forward	Forward	Forward
Prev 	Previous chapter	Previous chapter	Previous chapter	Previous chapter	Previous chapter	Previous chapter
Pause 	Pause	Pause	Pause	Pause	Pause	Pause
Play 	Play	Play	Play	Play	Play	Play
Next 	Next chapter	Next chapter	Next chapter	Next chapter	Next chapter	Next chapter

## A.2 International TV systems and standards (Analog TV)



- TV systems and standards may change anytime without notice. This list is provided for reference only.
- Ensure that your TV card complies with the system or standard used in your country or location.

AREA	TV	STEREO	SUBTITLE
Albania	PAL B/G		
Argentina	PAL-N		
Australia	PAL B/G	FM-FM	Teletext
Austria	PAL B/G	FM-FM	Teletext
Azores Is. (Portugal)	PAL B		
Bahamas	NTSC M		
Bahrain	PAL B		
Barbados	NTSC N		
Belgium	PAL B/G	Nicam	Teletext
Bermuda	NTSC M		
Brazil	PAL-M	MTS	
Bulgaria	SECAM D		
Canada	NTSC M	MTS	CC
Canary Is.	PAL B		
China	PAL D		
Colombia	NTSC N		
Cyprus	PAL B		
Czech Republic	SECAM/PAL D/K		
Denmark	PAL B	Nicam	TeleText
Egypt	SECAM B		
Faroe Islands (DK)	PAL B		
Finland	PAL B/G	Nicam	TeleText
France	SECAM E/L		
Gambia	PAL I		
Germany	PAL B/G	FM-FM	TeleText
Germany (prev East)	SECAM/PAL B/G		
Gibraltar	PAL B		
Greece	SECAM B/H		
Hong Kong	PAL I	Nicam	
Hungary	PAL B/G	Nicam	
Iceland	PAL B		
India	PAL B		
Indonesia	PAL B		
Iran	SECAM H		
Ireland	PAL I	Nicam	TeleText

(Continued on the next page)

AREA	TV	STEREO	SUBTITLE
Israel	PAL B/G	Nicam	TeleText
Italy	PAL B/G	FM/FM	TeleText
Jamaica	SECAM M		
Japan	NTSC J		
Jordan	PAL B		
Kenya	PAL B		
Korea	NTSC M		
Luxembourg	PAL B/G		TeleText
Madeira	PAL B		
Madagascar	SECAM B		
Malaysia	PAL B		
Malta	PAL B/G		
Mauritius	SECAM B		
Mexico	NTSC M	MTS	CC
Monaco	SECAM/PAL L/G		
Morocco	SECAM B		
Netherlands	PAL B/G	FM-FM	TeleText
New Zealand	PAL B/G	Nicam	TeleText
North Korea	SECAM/PAL D, D/K		
Norway	PAL B/G	Nicam	
Pakistan	PAL B		
Paraguay	PAL N		
Peru	NTSC M		
Philippines	NTSC M		
Poland	PAL D/K		Teletext
Portugal	PAL B/G	Nicam	Teletext
Romania	PAL G		
Russia	SECAM D/K		
Saudi Arabia	SECAM B		
Seychelles	PAL I		
Singapore	PAL B		
South Africa	PAL I		
South Korea	NTSC N		
Spain	PAL B/G	Nicam	
Sri Lanka	PAL B/G		
Sweden	PAL B/G	Nicam	Teletext
Switzerland	PAL B/G	FM-FM	TeleText
Tahiti	SECAM KI		
Taiwan	NTSC M		
Thailand	PAL B		
Trinidad	NTSC M		
Tunisia	SECAM B		
Turkey	PAL B		TeleText
Ukraine	SECAM D/K		
United Arab Emirates	PAL B/G		
United States	NTSC M		
United Kingdom	PAL I		
Vietnam	NTSC/SECAM M/D		
Yugoslavia	PAL B/G		
Zambia	PAL B/G		
Zimbabwe	PAL B/G		



## A.3 International TV systems and standards (DVB-T)

TYPE	LOCATION	BW	BAND
DVB-T+PAL	Australia	7 MHz	V/UHF
DVB-T+PAL	Austria	8 MHz	UHF
DVB-T+PAL	Belgium	8 MHz	UHF
DVB-T+PAL	Denmark	8 MHz	UHF
DVB-T+PAL	Estonia	8 MHz	UHF
DVB-T+PAL	Faroe Island	8 MHz	UHF
DVB-T+PAL	Finland	8 MHz	UHF
DVB-T+PAL	France	8 MHz	–
DVB-T+PAL	Germany	7/8 MHz	V/UHF
DVB-T+PAL	Hungary	8 MHz	UHF
DVB-T+PAL	Italy	7/8 MHz	V/UHF
DVB-T+PAL	India	–	–
DVB-T+PAL	Ireland	8 MHz	UHF
DVB-T+PAL	Latvia	8 MHz	UHF
DVB-T+PAL	Lithuania	–	–
DVB-T+PAL	Luxembourg	–	–
DVB-T+PAL	Netherland	8 MHz	UHF
DVB-T+PAL	Norway	8 MHz	UHF
DVB-T+PAL	Poland	8 MHz	UHF
DVB-T+PAL	Portugal	8 MHz	UHF
DVB-T+PAL	Singapore	8 MHz	UHF
DVB-T+PAL	Slovakia	–	–
DVB-T+PAL	Slovenia	7/8 MHz	V/UHF
DVB-T+PAL	S-Africa	8 MHz	UHF
DVB-T+PAL	Spain	8 MHz	UHF
DVB-T+PAL	Sweden	8 MHz	UHF
DVB-T+PAL	Switzerland	8 MHz	UHF
DVB-T+PAL	UK	8 MHz	UHF
DVB-T+NTSC	Taiwan	6 MHz	UHF

## A.4 International TV systems and standards (ATSC)

TYPE	LOCATION	BW	BAND
ATSC	USA	6 MHz	V/UHF
ATSC	Canada	6 MHz	V/UHF

## A.5 International TV systems and standards (DMB-TH)

TYPE	LOCATION	BW	BAND
DMB-TH	China	8 MHz	V/UHF
DMB-TH	Hong Kong	8 MHz	V/UHF

<b>Manufacturer:</b>	ASUSTeK Computer Inc.
<b>Address:</b>	No.150, LI-TE RD., PEITOU, TAIPEI 112, TAIWAN
<b>Authorised representative in Europe:</b>	ASUS Computer GmbH
<b>Address:</b>	HARKORT STR. 21-23, 40880 RATINGEN, GERMANY

## Free Manuals Download Website

<http://myh66.com>

<http://usermanuals.us>

<http://www.somanuals.com>

<http://www.4manuals.cc>

<http://www.manual-lib.com>

<http://www.404manual.com>

<http://www.luxmanual.com>

<http://aubethermostatmanual.com>

Golf course search by state

<http://golfingnear.com>

Email search by domain

<http://emailbydomain.com>

Auto manuals search

<http://auto.somanuals.com>

TV manuals search

<http://tv.somanuals.com>