



PBS45

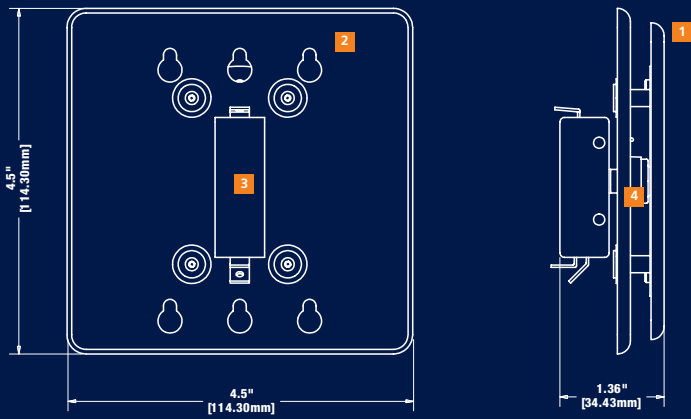
This square push plate is the perfect solution for fast and easy installation. Screws on the front plate allow for quick removal while still remaining functional, aesthetically appealing and weather resistant.

A Plate Revolution, Now!

PBS45 Series

Stainless Steel 4 1/2" Square Removable Face Plate Push Plates

- Screws are on the outside surface allowing easy removal or installation of push plate
- Perfect for wall applications because they are easy to see, but unobtrusive to the aesthetics of the building
- Beveled edges provide a tamper and vandal proof solution to your push plate needs, allowing no room to get objects between plate and box
- An all-active plate activates with any "push" location
- Stainless steel finish will not deteriorate/rust where it is touched; scratch and scuff resistant
- Text and logo are baked on for leading durability
- Screws come in multiple sizes (#6), which fit both single and double gang mounting boxes
- Push plates come in multiple colors and sizes that allow you to easily meet specifications and customer requests
- Weather boot between plate and back plate for all weather applications
- Lifetime warranty allows you to save money in the long run



Components

- 1 Front Plate
- 2 Back Plate
- 3 Cherry Switch
- 4 Weatherboot

Technical Specifications/ Mounting Hardware

- a. 16 gauge, 304 2B Stainless Steel Faceplate
- b. 16 gauge, 304 2B Stainless Steel Backplate
- c. Stainless Steel 6-32 x 1" Phillips head mounting screws
- d. Stainless Steel 6-32 x 1/4" Phillips or tamper-resistant Spanner head assembly screw
- e. Cherry Switch: Single-pole, 15A, COM/ NO/ NC contacts
- f. Powdercoat then clear coated faceplates available on certain styles
- g. Wire nuts

Custom Specifications

BEA proposes a variety of custom solutions for your push plates:

Abrasive Etching/Engraved – This method creates a very accurate and deep “scratch” in the plate that is then filled with paint to create the custom logo/text on the surface of the plate.

Pad Printed – Logo/text is stamped onto the surface of the steel plate using a special pad. The logo is only printed on the surface of the plate.

Embossing – This process requires the use of a special tool designed to punch the back of the face plate with the custom information. A special coating is added to create a dramatic 3D embossing for your push plate.

Contact Information

BEA Inc.
 RIDC Park West
 100 ENTERPRISE DRIVE
 PITTSBURGH, PA 15275

PHONE 1-412-249-4100
 FAX 1-888-523-2462
 TOLL FREE 1-800-5 BEA INC

BEA West
 190 East
 Arrow Highway Suite A
 San Dimas, CA 91773-3314
 FAX 1-888-523-2462
 TOLL FREE 1-877-232-9378

www.beasensors.com

Download from www.Somanuals.com. All Manuals Search And Download.

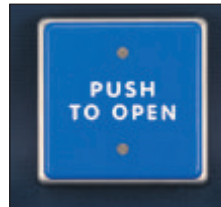
PBS45 Series



10PBS451 - Text and Logo 10PBS45 - Text only



10PBS45LL- Logo Only 10PBS451B - Text and Logo blue



10PBS45B - Text only blue

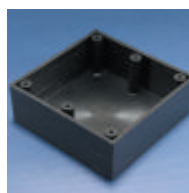
Mounting Components



10BOX45SQSM
 Mount Box



10BOXDG45C
 Double Gang Mount Box



10BOXDG4H
 Double Gang Mount Box



10BOLLARD



Free Manuals Download Website

<http://myh66.com>

<http://usermanuals.us>

<http://www.somanuals.com>

<http://www.4manuals.cc>

<http://www.manual-lib.com>

<http://www.404manual.com>

<http://www.luxmanual.com>

<http://aubethermostatmanual.com>

Golf course search by state

<http://golfingnear.com>

Email search by domain

<http://emailbydomain.com>

Auto manuals search

<http://auto.somanuals.com>

TV manuals search

<http://tv.somanuals.com>