

Step 1. Unpack Appliance

Unpack DiMeda. Move it to the place of operation. **Warning:** DiMeda is heavy; use care in lifting it. Save packaging materials. To transport DiMeda, use the original packaging.

Step 2. Insert drives

The system was configured with the drives in a set order. Each drive is labeled. It is important that you insert the 24 drives into the front of the array in the following order:

0-0	0-1	0-2	0-3
0-4	0-5	0-6	0-7
0-8	0-9	0-10	0-11
1-0	1-1	1-2	1-3
1-4	1-5	1-6	1-7
1-8	1-9	1-10	1-11

Step 3. Cable DiMeda

- Attach electrical cables, as shown in Figure 1. For greater redundancy, attach electrical cables to at least two separate power sources.

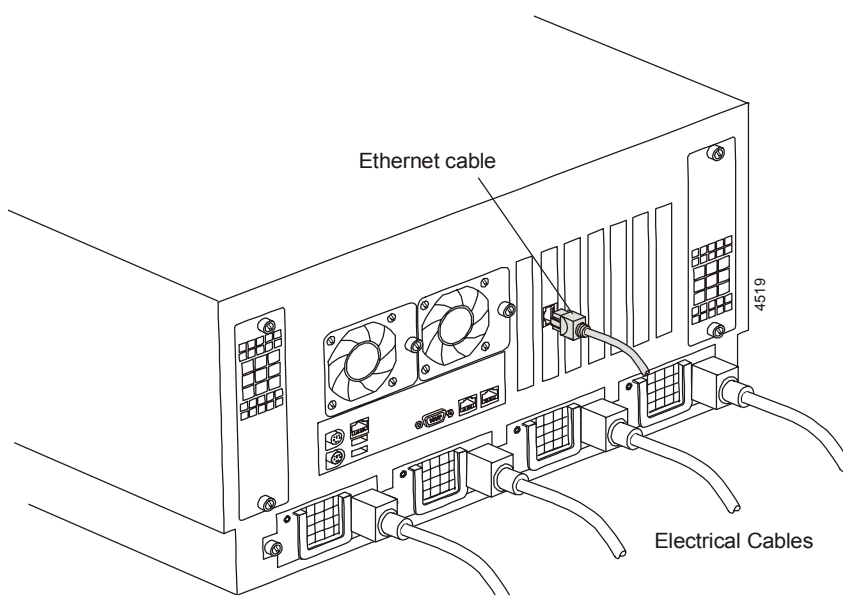


Figure 1. Cables

- Attach an Ethernet cable from Port 0 to a node on the network.
- Power up DiMeda by pressing the small round On/Standby button on the front left of the machine, as shown in Figure 2.

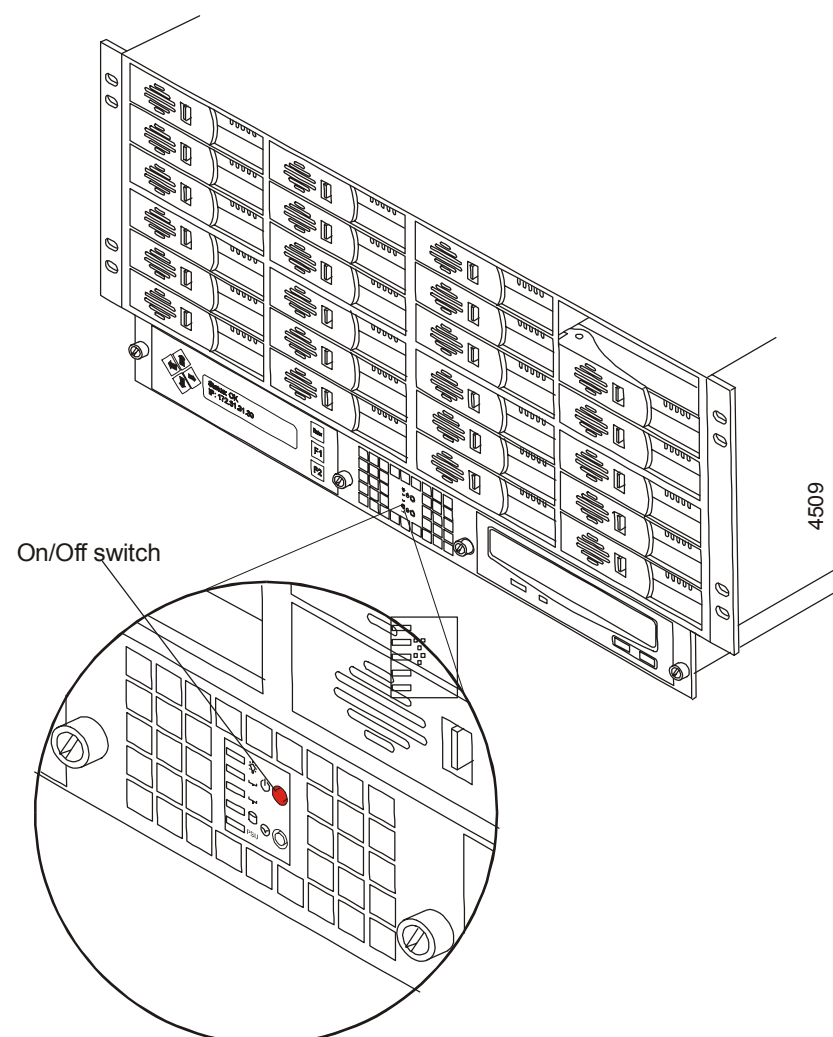


Figure 2. On/Standby Button

Step 3. Open DiMeda Software on Workstation

- From any network machine, recognize DiMeda by adding an IP address within the subnet range of 172.31.0.0.
- Open DiMeda software in a Web browser (such as Netscape, Internet Explorer, or Mozilla) by entering the following in the browser address bar:

`https://172.31.31.30:9890`

Notice the s in the https: address. Make sure the advanced Internet options include cookies and JavaScript (or JIT).

- Read and agree to the license agreement.
- Enter the password, which is the appliance serial number which appears along the top of the frame, as shown in Figure 3.

Appliance Serial Number

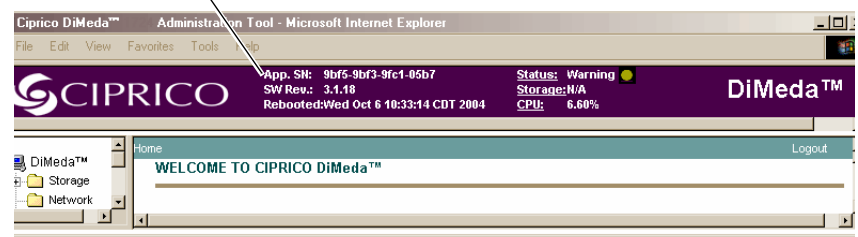


Figure 3. Appliance Serial Number

The appliance software opens and defaults to the setup window. Click on Setup. The Configure Network Ports window appears.

Note: At any time during Setup, click on the Back icon to review or change prior windows. Configuration is not complete until Step 10.

Step 4. Configure Network Ports

Configure network ports to work in your environment. Do not enable jumbo frames unless you are certain your software supports them. The public IP address for Port 0 (external) is the DiMeda address on the network. After setting port values, click on Next.

Note: For detailed information about DiMeda configuration options, click on the Help icon (?) in the upper right corner of each window.

Step 5. Set Up a Name and IP Address

- Review the local domain name. The default is Default.Domain.
- Review the gateway address and netmask. The default gateway address is 0.0.0.0 (no gateway).
- Enter the node name for DiMeda. Click on Next.

Step 6. Change the Password

Change the DiMeda password for security. (Remember to write it down.) Click on Next.

Step 7. Set Date and Time

Select the correct time zone, date, and time. Click on Next.

Step 8. Configure SNMP

Simple Network Management Protocol (SNMP) notifies an SNMP manager via traps when an event occurs in the DiMeda system. To disable SNMP, leave the window blank. Click on Next. To enable SNMP, do the following:

- Enter a community name.
- If you have an SNMP manager running on a host, enter the IP address of the SNMP server for Host 1 or 2 for either SNMP Version 1 or 2. Both versions of SNMP report error conditions. SNMP2 is an updated version that has better security, automatic continuous feedback, and potentially provides more error information. DiMeda will send event notices to that host.
- Choose the severity level that will trigger an event notification. Click on Next.

(Continue on the reverse side.)

Step 9. Configure SMTP

Simple Mail Transfer Protocol (SMTP) notifies an administrator via e-mail when an event occurs in the DiMeda system. To disable SMTP, leave the window blank and click on the Next icon. To enable SMTP, click in the Enable box and do the following:

- Enter the IP address of the mail server.
- Remove a contact by clicking on its name and the Remove button.
- Add, edit, or maintain the default contact by clicking on the appropriate button. The SMTP Contact window appears.
- Enter the name, e-mail address, event severity, and time during which this contact will be notified. Click on OK to return to the SMTP window. Click on Next.

Step 10. Save and Reboot

- In the SMTP window, click on the Save icon. DiMeda asks if you are sure you want to save this configuration.
- Click on OK. A message appears, reporting that the setup was successful and requesting that you reboot.
- Click on Reboot Now. A message appears, telling you the system is rebooting.
- Close the browser. *Do not power down the enclosure.*
- After two minutes, open a browser. In the address bar, enter the public IP address you created in Step 4. Rebooting takes between 2 and 10 minutes. Refresh until the Welcome window appears.
- Enter the password you created in Step 6.

Step 11. Create a File System

A welcome window appears, reminding you to create a file system. Click on the Yes button. The File System Creation window appears.

- Click on the device from the Available Devices List. The size of the file system you are creating appears.
- Choose one of these File System Types: Video application or General Purpose application.
- Enter the mount point.
- Choose a method for communicating with client systems when exchanging files between computers: NFS (Unix), CIFS (Windows), or both. Click on Next.

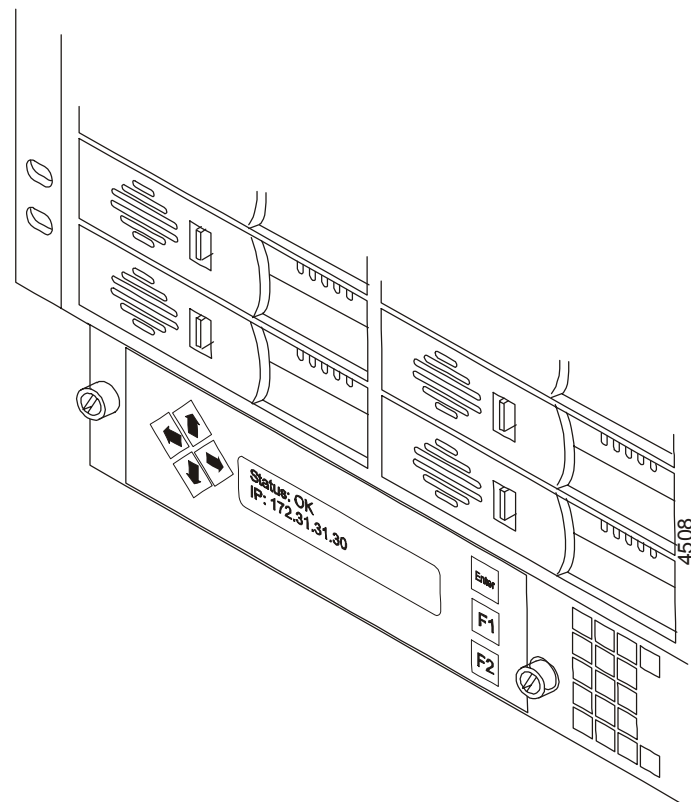
Step 12. Create Shares

If you chose NFS, the NFS Share window appears. Specify NFS options. If you chose CIFS, the CIFS Share window appears. Specify CIFS options. If you chose AFP, the AFP Share window appears. Specify AFP options. Click on the Save icon.

DiMeda is now attached to your network, ready to store, retrieve, and share files between your networked clients - reliably and at high speed.

LCD Display

The liquid crystal display (LCD) panel enables you to enter commands. Use the arrow, F1, F2, and Enter buttons to view status or enter commands.



- To view Status, press F1.
- To view the menu, press F2.
- To select or confirm a menu option, press Enter.

Status

The LCD screen displays the following status:

- Booting
- Good
- Halted
- Monitor (when the appliance is in monitor mode)
- Warning

Actions

To **shut down** the array, do the following:

- Press F2 to view the menu.
- Use the up or down arrow to select Shutdown.
- Press Enter. The system asks you to confirm.
- Press Enter again.

To **reboot**, do the following:

- Press F2 to view the menu.
- Press the up or down arrow until Reboot appears.
- Press Enter. The system asks you to confirm.
- Press Enter again.

To **change the IP address**, do the following

- Press F2 to view the menu.
- Use the up or down arrow to select Set IP.
- Press Enter. The system displays the current IP address.
- Use the up and down arrows to change numbers. Use the left and right arrows to move from digit to digit.
- Press Enter when the new IP address is complete. If the update was successful, the LCD displays the following:

```
IP address was set
F1=Status F2=Menu
```

- If the update was unsuccessful, the LCD displays the following:

```
Error setting IP Addr.
F1=Status F2=Menu
```

Free Manuals Download Website

<http://myh66.com>

<http://usermanuals.us>

<http://www.somanuals.com>

<http://www.4manuals.cc>

<http://www.manual-lib.com>

<http://www.404manual.com>

<http://www.luxmanual.com>

<http://aubethermostatmanual.com>

Golf course search by state

<http://golfingnear.com>

Email search by domain

<http://emailbydomain.com>

Auto manuals search

<http://auto.somanuals.com>

TV manuals search

<http://tv.somanuals.com>