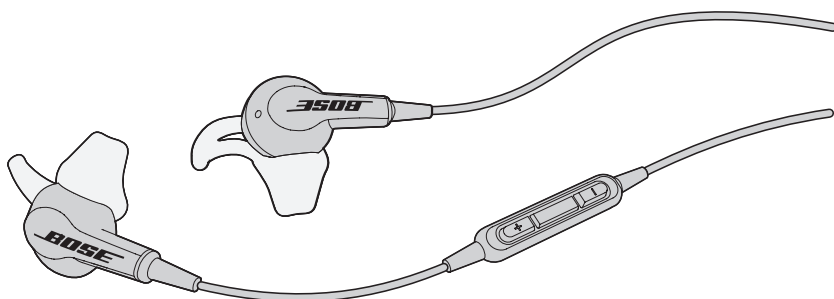


BOSE[®]



Bose[®] SoundSport[™]

in-ear headphones

for use with select iPod, iPhone and iPad models

Owner's Guide

Important Safety Information

Please read this owner's guide carefully and keep for future reference.



WARNINGS:

- **DON'T** use the headphones at a high volume for any extended period.
 - To avoid hearing damage, use your headphones at a comfortable, moderate volume level.
 - Turn the volume down on your device before placing the headphones in your ears, then turn the volume up gradually until you reach a comfortable listening level.
- **DO** use caution and follow applicable laws regarding mobile phone and headphone use if using the headphones for phone calls while driving. Some jurisdictions impose specific limitations, such as single earpiece configuration, on the use of such products while driving. **DON'T** use the headphones for any other purpose while driving.
- **DO** focus on your safety and that of others if you use the headphones while engaging in any activity requiring your attention, e.g., while riding a bicycle or walking in or near traffic, a construction site or railroad, etc. Remove the headphones or adjust your volume to ensure you can hear surrounding sounds, including alarms and warning signals.
- **DON'T** use mobile phone adapters to connect headphones to airplane seat jacks, as this could result in personal injury such as burns or property damage due to overheating.
- **DO** remove headphones and disconnect immediately if you experience a warming sensation or loss of audio.
- **DON'T** submerge or expose for extended period to water, or wear while participating in water sports, i.e. swimming, waterskiing, surfing, etc.
- **DON'T** place naked flame sources, such as lighted candles, on or near the product.



WARNING:

Contains small parts which may be a choking hazard. Not suitable for children under age 3.



WARNING:

This product contains magnetic material. Contact your physician if you have questions on whether this might affect the operation of your implantable medical device.



This symbol means the product must not be discarded as household waste, and should be delivered to an appropriate collection facility for recycling. Proper disposal and recycling helps protect natural resources, human health and the environment. For more information on disposal and recycling of this product, contact your local municipality, disposal service, or the shop where you bought this product.



This product conforms to all applicable EU directive requirements. The complete declaration of conformity can be found at www.Bose.com/compliance

Names and Contents of Toxic or Hazardous Substances or Elements						
	Toxic or Hazardous Substances and Elements					
Part Name	Lead (Pb)	Mercury (Hg)	Cadmium (Cd)	Hexavalent (CR(VI))	Polybrominated Biphenyl (PBB)	Polybrominated diphenylether (PBDE)
PCBs	X	0	0	0	0	0
Metal parts	X	0	0	0	0	0
Plastic parts	0	0	0	0	0	0
Speakers	X	0	0	0	0	0
Cables	X	0	0	0	0	0
O: Indicates that this toxic or hazardous substance contained in all of the homogeneous materials for this part is below the limit requirement in SJ/T 11363-2006. X: Indicates that this toxic or hazardous substance contained in at least one of the homogeneous materials used for this part is above the limit requirement in SJ/T 11363-2006.						

©2014 Bose Corporation. No part of this work may be reproduced, modified, distributed, or otherwise used without prior written permission.

About your Bose® SoundSport™ in-ear headphones.....	4
Carton contents.....	4
Connecting to your iPod, iPhone, or iPad.....	5
Using the headphones with your iPod, iPhone, or iPad.....	5
Headphone controls	5
Basic functions	6
Media playback functions	6
Importance of proper fit.....	7
Fitting the headphones to your ear	7
Changing the ear tips	8
Adjusting for comfort and stability.....	9
Using the adjustment slider	9
Using the clothing clip	9
Using a single earpiece.....	9
Troubleshooting	10
Cleaning.....	11
Limited warranty	11

Made for



iPod



iPhone



iPad

iPad, iPhone, iPod, iPod classic, iPod nano, iPod touch, iPod shuffle, and Retina are trademarks of Apple Inc., registered in the U.S. and other countries. iPad Air and iPad mini are trademarks of Apple Inc. The trademark "iPhone" is used with a license from Apple Inc.

"Made for iPod," "Made for iPhone," and "Made for iPad" mean that an electronic accessory has been designed to connect specifically to iPod, iPhone, or iPad, respectively, and has been certified by the developer to meet Apple performance standards. Apple is not responsible for the operation of this device or its compliance with safety and regulatory standards. Please note that the use of this accessory with iPod, iPhone, or iPad may affect wireless performance.

Please complete and retain for your records:

The serial and model numbers can be found on the warranty card.

Serial number _____

Model number _____

Purchase date _____

We suggest you keep your receipt with this owner's guide.

Using the headphones

About your Bose® SoundSport™ in-ear headphones

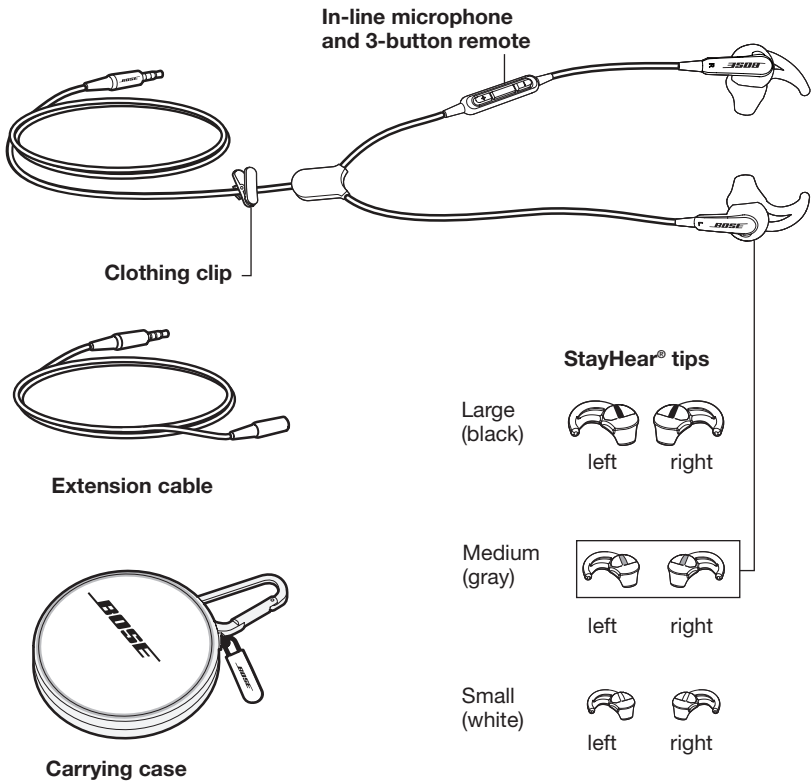
The Bose® SoundSport™ in-ear headphones offer full, balanced sound that conventional sports earbuds can't match.

System Features

- Exclusive TriPort® technology delivers natural-sounding lows, even at higher volumes.
- Sweat and weather-resistant.
- Proprietary StayHear® tips conform to your ears' shape, so they stay comfortably in place even during long, vigorous exercise.
- Lightweight, durable carrying case stores and protects headphones.
- Inline microphone and remote provide control for select iPod and iPhone models.
- Engineered and tested for lasting quality and durability.
- Available in different colors to fit your style.

Unpacking the system

Carefully unpack the carton and confirm that the following parts are included:

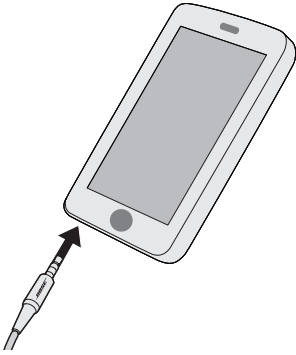


Note: The headphones come with medium (gray) StayHear® tips attached.

Using the headphones

Connecting to your iPod, iPhone, or iPad

Connect the headphones to the standard 3.5 mm headphone input on your device.



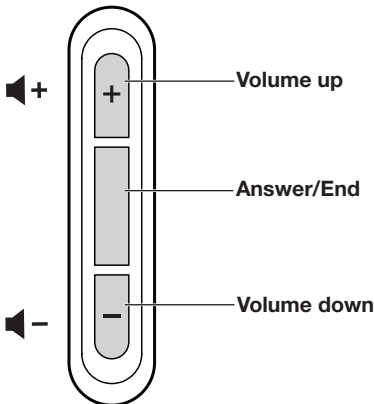
Using the headphone with your iPod, iPhone, or iPad

The Bose® SoundTrue™ in-ear headphones come with an inline microphone and 3-button remote.

Made for:

iPhone 5s, iPhone 5c, iPhone 5, iPhone 4s, iPhone 4, iPhone 3GS, iPad Air, iPad mini with Retina display, iPad (3rd and 4th generation), iPad mini, iPad 2, iPad, iPod touch (2nd through 5th generation), iPod classic, iPod nano (4th through 7th generation), and iPod shuffle (3rd and 4th generation).

Headphone controls



Basic functions

Increase volume	Press and release the + button.
Decrease volume	Press and release the – button.
Answer a call	When you receive an incoming call, press and release the Answer/End button to answer.
End a call	Press and release the Answer/End button.
Decline an incoming call	Press and hold the Answer/End button for about two seconds, then release.
Switch to an incoming or on-hold call and put the current call on-hold	While on a call, press and release the Answer/End button once. Press and release again to switch back to the first call.
Switch to an incoming or on-hold call and end the current call	While on a call, press and hold the Answer/End button for about two seconds, then release.
Use Voice Control	Press and hold the Answer/End button. For more information on Voice Control, refer to your iPhone User's Guide.

Media playback functions

Play or pause a song or video	Press and release the Answer/End button.
Skip to the next song or chapter	Press and release the Answer/End button twice quickly.
Fast forward	Press and release the Answer/End button twice quickly and hold the second press.
Go to the previous song or chapter	Press and release the Answer/End button three times quickly.
Rewind	Press and release the Answer/End button three times quickly and hold the third press.

Using the headphones

Importance of proper fit

When you wear the headphones properly, they provide the comfort and clarity you expect from Bose.

Fitting the headphones to your ear

The headphone earpiece has a soft StayHear® tip attached, allowing it to rest comfortably in the bowl of your ear. The wing part of the tip fits just under your ear ridge.

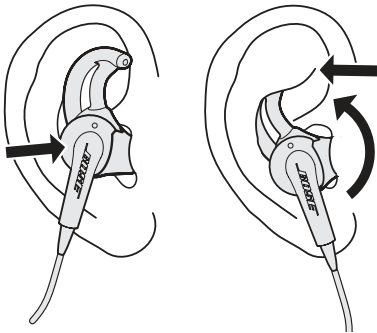
Note: Each StayHear® tip is marked with an **L** (Left) or an **R** (Right) to indicate which earpiece it is designed to fit. Be sure to attach the Left tip to the Left earpiece and the Right tip to the Right earpiece.



To determine if the tip is the right size:

1. Insert the earpiece into the canal just enough for the headphone to rest lightly against your ear.
2. Tilt the headphone back and press the tip wing under the ear ridge until it is secure.

The tips should fit comfortably yet securely in the bowl of the ear.



Changing the ear tips

Select the type and size of eartip that provides you with the best comfort and fit.

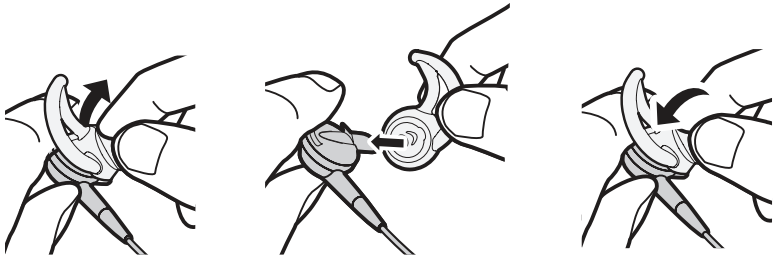
1. Gently peel the edges of the attached tip away from the earpiece, using care not to tear the tip.

Caution: To prevent damage, do not pull on the StayHear® tip wing.

2. Position the opening of the new tip over the nozzle and the small slot over the nozzle hook.

Note: Each tip is marked with either an **L** or an **R** to indicate which earpiece it is for. Be sure to attach the left StayHear® tip to the left earpiece and the right StayHear® tip to the right earpiece.

3. Ease the base of the tip down around the base of the earpiece until the tip feels secured.



Attaching the extension cable

Attach the extension cable to create extra cable length between the headphones and your mobile device.

1. Connect the female end of the extension cable to the headphone cable.
2. Connect the other end of the extension cable to the standard 3.5 mm headphone input on your device.

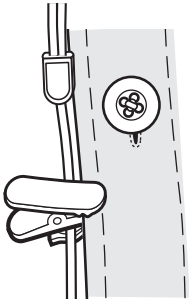
Using the headphones

Adjusting for comfort and stability

There are several ways you can adjust your headphones to provide additional comfort and stability. You can customize how you wear your headphones using the adjustment slider and clothing clip.

Using the clothing clip

Use the clothing clip to fasten the cable to your clothing, for convenience, stability, and to help manage the cable. This can be helpful during high-movement activities or when using the headphones in a single earpiece configuration.



Using a single earpiece

The Bose® SoundSport™ in-ear headphones can be used with only the right (R) earpiece in your ear. This allows you to take calls and still hear surrounding sounds.

Troubleshooting

If you experience any trouble using your headphones, try the following troubleshooting instructions.

Problem	What to do
No audio/intermittent audio	<ul style="list-style-type: none">• Securely connect the headphones plug to the headphone input.• Try another audio device.
Excessive bass	<ul style="list-style-type: none">• Turn off any audio enhancement features on the audio source.
Microphone is not picking up sound	<ul style="list-style-type: none">• Make sure you are using a compatible device. See “Made for” on page 6.• Securely connect the headphones plug to the headphone input.• Make sure the microphone opening on the back of the Answer/End button is not blocked.• Try another phone call.• Try another compatible device.
Phone not responding to remote (button) presses	<ul style="list-style-type: none">• Securely connect the headphones plug to the headphone input.• For multi-press functions: Vary speed of presses.
Apple product not responding to remote	<ul style="list-style-type: none">• Full controls may not be available for some Apple products.
Ear tips falling off	<ul style="list-style-type: none">• Securely attach the ear tips to the earpiece and nozzle hook.
Lost ear tip	<ul style="list-style-type: none">• Contact Bose® for replacement tips.
Sound is muffled from earpiece	<ul style="list-style-type: none">• Clear any debris or wax build-up from the ear tips and headphones nozzles.• Unplug the headphones from the audio source, then plug back in making sure they are securely connected.• Try another audio device.

Using the headphones

Cleaning

Your headphones may require periodic cleaning:

Ear tips: Remove the ear tips from the headphones. Wash them with a mild detergent and water. Make sure you thoroughly rinse and dry them before putting them back on the headphones.

Headphones' nozzles: Clean only with a dry, soft cotton swab or equivalent. Never insert any cleaning tool into the nozzle.

Limited warranty

The Bose® SoundSport™ in-ear headphones are covered by a limited warranty. Details of the limited warranty are provided on the product registration card that is included in the carton. Please refer to the card for instructions on how to register. Failure to register will not affect your limited warranty rights.

The warranty information provided with this product does not apply in Australia and New Zealand. See our website at www.bose.com.au/warranty or www.bose.co.nz/warranty for details of the Australia and New Zealand warranty.



728308-0010

BOSE[®]
Better sound through research[®]

©2014 Bose Corporation, The Mountain,
Framingham, MA 01701-9168 USA
AM728308 Rev. 00

Free Manuals Download Website

<http://myh66.com>

<http://usermanuals.us>

<http://www.somanuals.com>

<http://www.4manuals.cc>

<http://www.manual-lib.com>

<http://www.404manual.com>

<http://www.luxmanual.com>

<http://aubethermostatmanual.com>

Golf course search by state

<http://golfingnear.com>

Email search by domain

<http://emailbydomain.com>

Auto manuals search

<http://auto.somanuals.com>

TV manuals search

<http://tv.somanuals.com>