



# **USER GUIDE**

## WIRELESS AV ADAPTER

Model: 29599

# TABLE OF CONTENTS

|                                     |    |
|-------------------------------------|----|
| Introduction.....                   | 2  |
| Features.....                       | 3  |
| System Requirements.....            | 4  |
| Package Contents.....               | 5  |
| Device Overview.....                | 6  |
| Software/Device Installation.....   | 7  |
| Using the Wireless AV Adapter.....  | 14 |
| Frequently Asked Questions.....     | 21 |
| Video Playback Tips.....            | 24 |
| Technical Specifications.....       | 25 |
| Cables To Go One Year Warranty..... | 26 |
| Important Safety Information.....   | 27 |
| Appendix                            |    |
| Association with other devices..... | 28 |
| Cable Association Procedure.....    | 29 |
| PIN Association Procedure.....      | 31 |
| PIN Change Procedure.....           | 33 |

# INTRODUCTION

Thank you for purchasing the TruLink™ Wireless AV Adapter. The TruLink Wireless AV Adapter works with a Certified Wireless USB Host Adapter to wirelessly stream video and audio from your computer to a remote monitor, projector, or television. Utilizing Ultra-Wide Band technology, the Wireless AV Adapter enables in-room wireless connectivity at distances up to 30 feet between the computer and the display equipment. This highly secure wireless connection is ideal for classroom or conference room presentations or to display content from your laptop to your home entertainment system. **We recommend that you read this manual thoroughly and retain for future reference.**

# FEATURES

- ❖ Requires an existing USB Host Adapter (#28598 or #29578)-not included
- ❖ Video and Audio support in a single device adapter, delivered wirelessly from a computer to an external display
- ❖ Supports high resolution UXGA/WSXGA video and 3.5mm stereo audio
- ❖ Works in both extended desktop and dual monitor screen modes
- ❖ Supports native mode for playback of high resolution video
- ❖ Up to six computers can share one wireless display and speaker set\*
- ❖ One computer can broadcast over six audio/video displays\*\*
- ❖ Video streaming is supported up to 720p (720p only available at resolution 1024x768 or lower)
- ❖ In-room wireless connectivity up to 30ft
- ❖ Ultra-Wide Band operates in the frequency of 3.1GHz to 4.8GHz and 6.3GHz to 7.9GHz (WiMedia™ Band Group 1&3)
- ❖ Certified Wireless™ USB 1.0 compliant
- ❖ WiMedia 1.0 MAC & 1.1 PHY compliant

# SYSTEM REQUIREMENTS

- ❖ Microsoft® Windows® XP 32-bit with Service Pack 3 or higher; Microsoft® Vista® 32-bit/64-bit; or Windows 7 32-bit/64-bit

## Minimum Requirements (Office, Productivity, and Web applications)

Windows XP- Processor: 1.66GHz Atom or Celeron  
Ram: 512MB

Windows Vista/

Windows 7- Overall WEI Score: 3.0 or better  
Processor: 1.4GHz Core2Duo or better  
Memory: 1GB  
Video Card: Any GPU

## Recommended Requirements (Full-Screen Video Playback)

Windows XP- Processor: 1.8GHz Core2Duo or better  
RAM: 1GB

Windows Vista/

Windows 7- Overall WEI Score: 4.5 or better  
Processor: 2.4GHz Core2Duo or better  
Memory: 2GB  
Video Card: Intel GMA X4500, ATI Radeon HD3 series, NVidia GeForce 9 series or better

- ❖ You must also have administrative privileges on your PC to install the software package

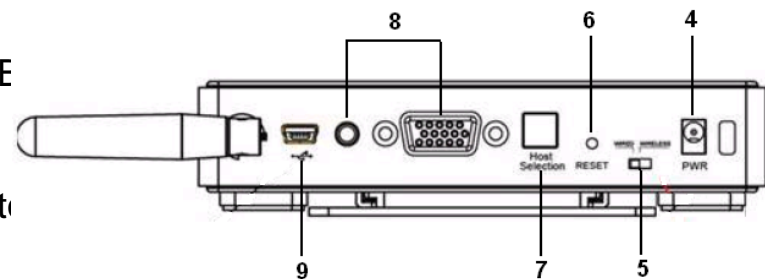
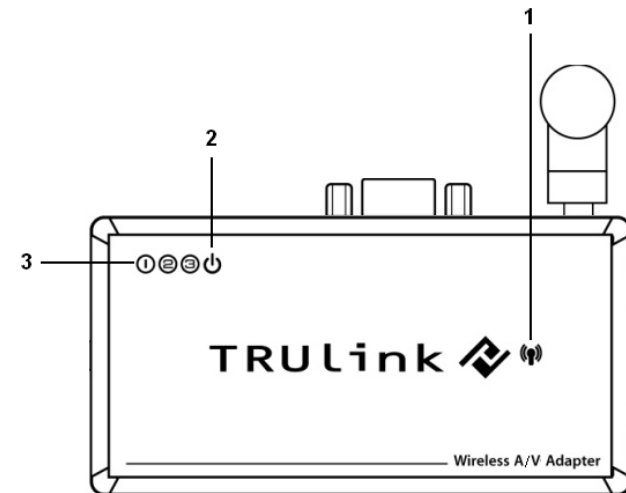
# PACKAGE CONTENTS

- ❖ Wireless AV Adapter
- ❖ One (1) Dipole Antenna
- ❖ 3ft USB A Male/Mini-B Male Cable
- ❖ 1ft VGA Male/Male Cable
- ❖ 3ft 3.5mm Male/Male Cable
- ❖ 3ft 3.5mm Male to 2 RCA Male Cable
- ❖ 5V/2.5A Power Adapter
- ❖ Mounting Bracket
- ❖ Two (2) Self-Tapping Screws
- ❖ Quick Start Guide
- ❖ Driver CD w/Electronic User Guide

# DEVICE OVERVIEW

## WIRELESS AV ADAPTER

1. VGA: VGA Activity Indicator
  - LED is solid when display cable is connected.
  - LED is blinking when data is being transferred.
2. PWR: Power Indicator
  - LED is solid when power is applied.
3. 1-2-3: Status Indicator
  - Illuminated number/s indicates the wireless USB Host Adapter that is currently synced with the Wireless VGA with Integrated Audio Adapter.
4. PWR plug
  - Power adapter input
5. Wireless/Wired switch
  - Choose from wired or wireless mode by moving the switch.
6. Reset
  - Association history can be erased by pressing and holding this button for 10 seconds.
7. Host Selection:
  - This button is used to select a different Wireless USB Adapter
8. VGA/Audio Outputs
  - HD15 and 3.5mm output connections for connecting to video and audio source
9. USB input
  - In Wireless mode, this connector is used for cable association.
  - In Wired mode, this connector is used for wired operation of the Wireless VGA with Integrated Audio Adapter



# SOFTWARE/DEVICE INSTALLATION

## IMPORTANT NOTE:

- **If installing on Windows XP, Service Pack 3 (SP3) is required. Verify that this has been installed before installing the Wireless AV Adapter software.**
- **Before installing the software, when using a Wireless USB host adapter make sure that it and the Wireless AV Adapter are not connected to the computer and the Wireless AV Adapter is not powered.**

## **STEP 1-INSTALLING THE SOFTWARE**

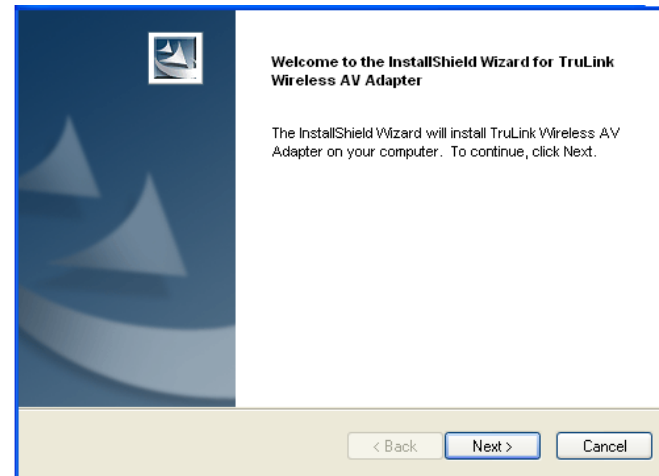
Insert the CD provided and the installer CD welcome screen will appear. Select the “Software Installation” from the menu.



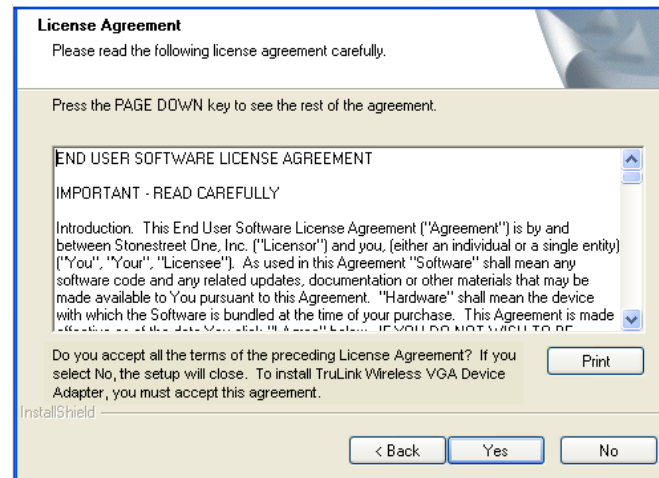
## SOFTWARE/DEVICE INSTALLATION

This will take you to the TruLink Wireless USB Kit InstallShield Wizard.

Click “Next” to go to proceed with the install.

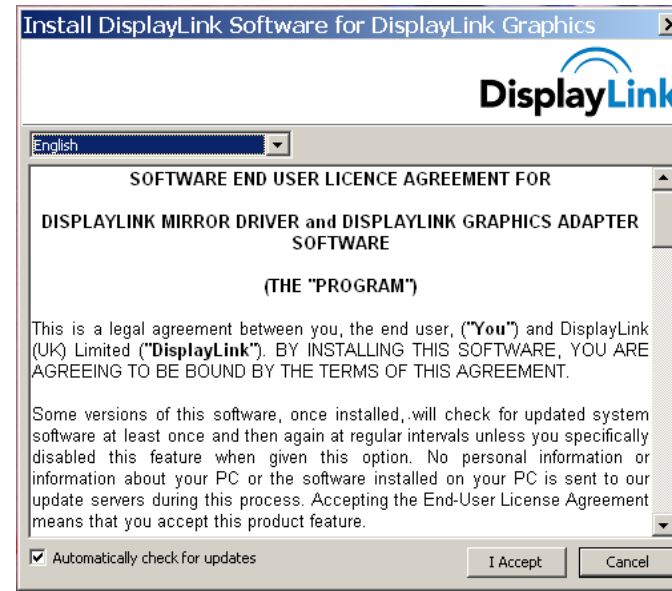


Read and accept the Wireless USB software License Agreement by clicking “Yes”.

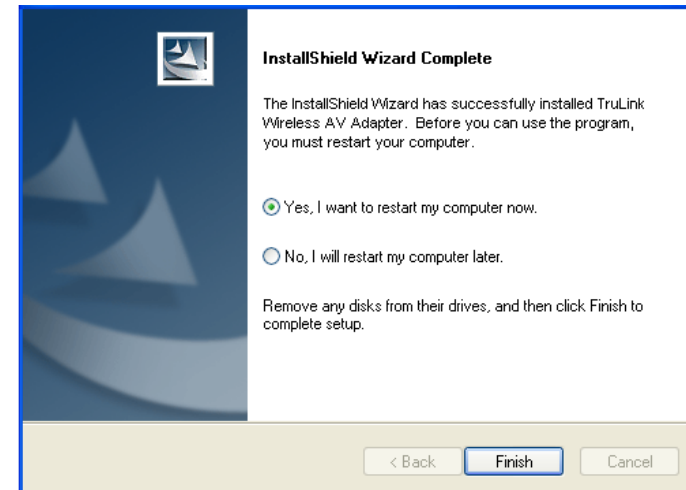


## SOFTWARE/DEVICE INSTALLATION

Read and accept the License Agreement for the DisplayLink software.



After the software installs, your installation is complete and you can hit the "Finish" button to exit the wizard.  
**Important: reboot/restart if prompted.**



### **STEP 2 (IF NECESSARY)-DRIVER INSTALLATION FOR THE WIRELESS USB HOST ADAPTER (SOLD SEPARATELY)**

1. Install your Wireless USB host adapter if you have not already done so. Please refer to your Wireless USB host adapter instructional guide or you may try to contact the manufacturer for the proper driver installation process.
2. Your Wireless USB host software utility may create an icon in your icon tray. Double-click the icon on the icon tray at the bottom of your desktop to open the utility. Below is an example of the Wireless USB Manager utility icon.



**Figure: Wireless USB Manager**

The Wireless USB software utility will open and instruct you on what to do next.

### **STEP 3 – DEVICE INSTALLATION FOR THE TRULINK WIRELESS AV ADAPTER**

The TruLink Wireless AV Adapter supports two association methods: Cable Association and Pin Association. Only one of these methods is necessary to complete installation. The instructions below describe steps for both methods, and how to use this adapter in Wired Mode. Please note that Pin Association is only recommended if using with a TruLink Wireless USB Host Adapter.

#### **Do the following before installation:**

- ❖ Make sure the antenna is connected to the Wireless AV Adapter.
- ❖ Plug the supplied power adapter into your Wireless AV Adapter.
- ❖ Be certain your Wireless USB host adapter is connected to the PC and necessary software has been loaded.
- ❖ Connect the Wireless AV Adapter to your display using a VGA cable.

#### **CABLE ASSOCIATION**

1. Make sure the Wireless AV Adapter Wireless/Wired switch is on Wireless. Using the supplied USB cable, connect the USB mini-b connector to the Wireless AV Adapter USB mini-B port and USB A connector on the cable to an available USB port on your PC.
2. A cable association window pop-up will ask you if you would like to accept the association. Accept the association and unplug the USB cable.
3. Windows will automatically install the appropriate Wireless AV Adapter drivers and you will get another successful install message pop up verifying successful installation. The installation is now finished and your Wireless VGA is ready for use.

### PIN ASSOCIATION

For Pin Association, it is strongly recommended that you use a TruLink Wireless USB Host Adapter, as some other Wireless USB host adapters may not support the feature. To pin associate with the TruLink Wireless USB Host Adapter, please do the following:

1. Make sure the Wireless AV Adapter Wireless/Wired switch is on Wireless.
2. Open the Wireless USB Manager, and click the Discovery button. The host adapter will look for the Wireless AV Adapter.
3. Once the Wireless AV Adapter is located, you will get the PIN Association dialog box that prompts you to enter the PIN of the device. The default PIN of the TruLink Wireless AV Adapter is 1234. This number may be changed and the procedure is described in the Appendix section of this guide. Enter the PIN and then click the Accept Association button.
4. The necessary Wireless AV Adapter drivers will install automatically. The VGA Activity Indicator will light on, and you are now ready to use the adapter



**Figure: Pin Association Entry**

### **VERIFY CONNECTION**

To verify connection from Cable or PIN Association, you can open the Wireless USB host manager utility and you should have an icon displayed representing the TruLink Wireless AV Adapter.

### **WIRED MODE**

Your Wireless AV Adapter can also be used wired mode.

1. Position the WIRELESS/WIRED switch in the WIRED position.
2. Plug the USB cable between your computer and the Wireless AV Adapter. If not already installed, Windows will automatically install the necessary drivers.
3. If prompted to Accept Association, please do so, and then disconnect the USB cable. The function is the same as the wireless mode but data will be transferred through the USB cable and not use the Wireless USB host adapter. You are now ready to use your TruLink Wireless AV Adapter.

# USING THE WIRELESS AV ADAPTER

## WIRELESS VGA DISPLAY SETTINGS

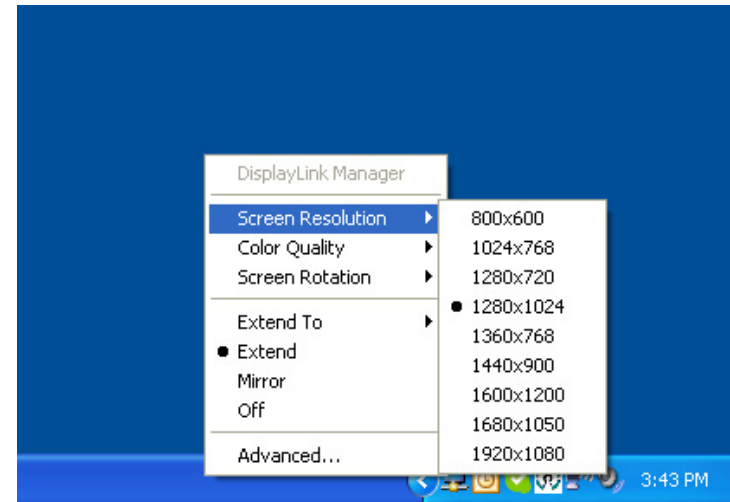
The TruLink Wireless AV Adapter hosts a number of various settings so that you may configure your image to the way you need it.

After you have properly installed the Wireless AV Adapter, an icon representing a monitor will appear in your Windows icon tray. This is the TruLink DisplayLink Manager. From this utility, you can adjust your image settings. To open the manager, right click on the icon in the Windows tray (Figure: TruLink DisplayLink Manager). A menu (Figure: Display Settings Menu) will appear and you will have the possibility to change parameters such as resolution, color quality, mirror mode or extension mode and more.



Figure: TruLink DisplayLink Manager

**NOTE:** By default, your monitor will be set for the best resolution and will extend your screen to the right.



**Figure: Display Settings Menu**



### **MENU DESCRIPTIONS**

#### **Screen Resolution**

This allows adjustment for your video's display capable screen resolutions. Please note that if all the options appear from the range of 640x480~1680x1050, your monitor will most likely only accept what its maximum capability is. You may want to refer to your specification section of your display user guide to see the optimal resolution. If you are using a notebook, Screen Resolution will only be available in Extended mode, as in Mirror mode your additional display will mimic the settings of your main notebook monitor.

#### **Color Quality**

In this setting you can adjust the color bits between Medium (16-bit) and High (32-bit).

#### **Screen Rotation**

This setting allows you to leave the display screen in Normal viewing mode, Rotated Left, Rotated Right, or Upside-Down viewing.

#### **Extend To**

If you are using Extended mode you can utilize this option to extend the display to the Right, Left, Above, or Below depending on where your monitor is positioned.

#### **Extend**

In this mode you can "extend" your desktop space to an additional monitor so you can have more view of different applications.

#### **Mirror**

In this mode you can duplicate your main monitor onto an additional monitor.

### **Advanced...**

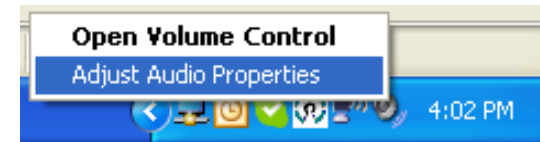
This will allow you to go into the Display Properties settings and make adjustments to your display settings.

## USING THE WIRELESS AV ADAPTER

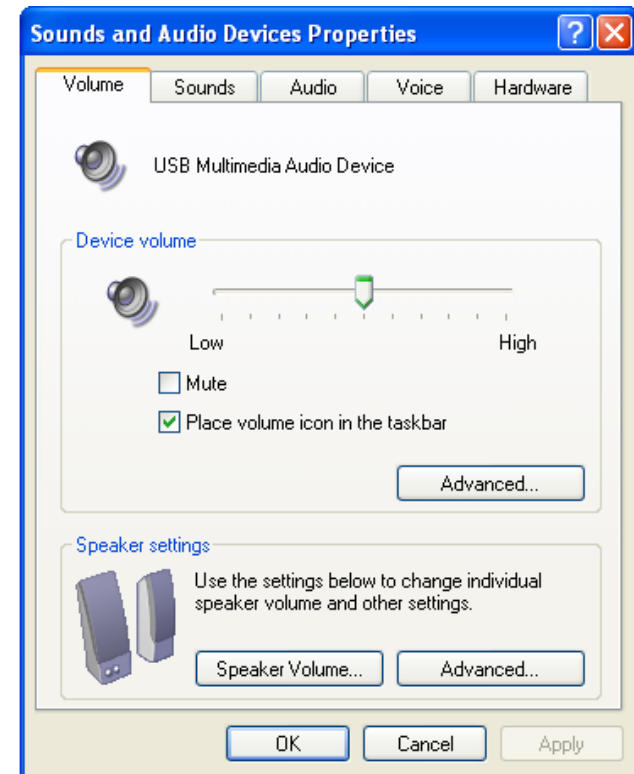
### AUDIO SETTINGS

Upon connecting the Wireless AV Adapter, your audio output from your PC will be defaulted through it at 50% listening level.

By right-clicking on the audio icon in the systems icon tray, you can go to **Adjust Audio Properties** to make any audio adjustments as you would with any audio projection device.



That will open up the **Sounds and Audio Devices Properties** screen and here you can make any adjustments. The name given to the audio output through the Wireless AV Adapter is **USB Multimedia Audio Device**.



## USING THE WIRELESS AV ADAPTER

### **WIRELESS USB HOST ADAPTER SELECTION**

Your Wireless USB host adapter/s will have to go through the association process before they can be used with the TruLink Wireless AV Adapter. For more information about the association process, please refer to Appendix – Association with other devices.

The “HOST” button on the Wireless AV Adapter is used to switch between Wireless USB host adapters. By pressing this button, the Wireless AV Adapter will look for the next associated Wireless USB host adapter in its list and connect to it. The 1-2-3 lights will move to the next position. The LED is scheme is as follows:

|        | Light | Light | Light |
|--------|-------|-------|-------|
| User 1 | On    | Off   | Off   |
| User 2 | Off   | On    | Off   |
| User 3 | Off   | Off   | On    |
| User 4 | On    | On    | Off   |
| User 5 | Off   | On    | On    |
| User 6 | On    | Off   | On    |

### **WIRELESS USB HOST ADAPTER RESET**

To erase all Wireless USB host adapters associated to your Wireless AV Adapter, hold down the “RESET” button for 10 seconds. This will cause the Wireless AV Adapter to erase all Wireless USB host adapters that have been associated from its list. Each Wireless USB host adapters will then have to be re-associated with the Wireless AV Adapter using one of the association processes (cable or pin association) in order to connect to the Wireless AV Adapter again.

# FREQUENTLY ASKED QUESTIONS

## 1. Why can't I install .NET?

You may have an older version of .NET, preventing the newer one from being installed. Using Add/Remove Programs or Programs and Features on the Control Panel, uninstall any version of Microsoft .NET Framework™ older than version 2.0. Then install Microsoft .NET Framework™ from the Wireless VGA kit installer.

## 2. My Wireless USB Host Adapter is plugged into my computer and my Wireless VGA Adapter is powered but I do not see anything on my display. What's wrong?

Check the Wireless USB Manager to see if there is an icon for your Wireless VGA Adapter. If there is no icon, try unplugging and then plugging in your Wireless USB Host Adapter to reload the Wireless VGA Adapter.

If you see an icon that is grayed out in the Wireless USB Manager, try resetting the Wireless VGA Adapter by unplugging its power and plugging it back in. You should see the icon in the Wireless USB Manager appear in color when it is connected.

Still not connected?

Try adjusting the resolution from the TruLink DisplayLink manager. Some displays such as television type displays can be recognized as a default monitor and therefore your PC may set it as a default 1280x1024 which can be too high for the monitor. If your monitor is not capable of displaying that resolution, you will need to lower the setting.

## **FREQUENTLY ASKED QUESTIONS**

### **3. Why is my video choppy?**

If you are experiencing choppy video, try changing the channel (please refer to your Wireless USB host adapter settings for this) or move in your computer closer to the display.

### **4. I see a blue screen or my desktop background on my display connected with the Wireless AV Adapter, but no icons. Is something wrong with my unit?**

No, your unit is working properly. The default setting of this device will extend your desktop on the additional display. With this function, you can grab icons or open applications on that display to make your overall viewing space larger. The default setting can be changed to Mirror mode, and with this setting you can duplicate the image from your main display or laptop screen to the additional display.

### **5. I am having issues transmitting video during DVD playback when using Windows Media Player. Is my unit not working properly? If it is, how can this be fixed?**

Your unit is working properly. Although Windows Media Player works, it does not react well for all scenarios. Windows Media Player will only work on the display connected with the Wireless AV Adapter, when you make this your primary display. To make it your primary display, you should go to the "Settings" tab in your Windows Display Properties and click the DisplayLink Device monitor, and check "Use this device as the primary monitor". Then go to your primary monitor and if "Extend my Windows desktop on the monitor" is checked, uncheck this option. Your image should now transmit to the display connected with the Wireless AV Adapter. Please note, this setup will not allow use of the original display. We recommend using a DVD based playback software if possible (i.e. PowerDVD, WinDVD) as these players have less playback issues, and your wireless display does not have to be primary.

## **FREQUENTLY ASKED QUESTIONS**

### **6. My Wireless USB Host Adapter is plugged into my computer but I do not hear anything out of my speakers when connected through the Wireless AV Adapter. What's wrong?**

Check the Wireless USB Manager to see if there is an icon for your Wireless AV Adapter. If there is no icon, try unplugging and then plugging in your Wireless USB Host Adapter to reload the Wireless AV Adapter.

If you see an icon that is gray in the Wireless USB Manager, try resetting the Wireless AV Adapter by unplugging its power and plugging it back in. You should see the icon in the Wireless USB Manager appear in color when it is connected.

Still not connected?

If you are using an audio source such as an A/V receiver, make sure the receiver is on the right input channel or attempt troubleshooting with your audio output device equipment.



# VIDEO PLAYBACK TIPS

1. We only recommend playing back video in “Extend” mode.
2. Don’t switch between “Mirror” and “Extended” modes while video is being played on the wireless display. Doing this can confuse the video player which may cause it to stop its playback. We recommend stopping playback, and then switching viewing modes if needed. Then you can restart your playback.
3. Avoid dragging video while playing from one display to another. The video may stop playback if this is done. To void this potential issue, open your media player on the wireless display, close the media player, and then re-open it. When you re-open it, the media player should open on the wireless display. From here, you can start playback of your video.
4. Avoid changing the resolution of the wireless display while a video is being played back, as this can cause the image to move to another screen if one is connected.
5. If you experience issues with QuickTime movie trailers, the solution is to disable DirectX in the QuickTime options menu. This can be found in the “Advanced” tab in the QuickTime player plug in settings.

Please visit our website for these and other tips and frequently asked questions.  
[www.cablestogo.com](http://www.cablestogo.com)

# TECHNICAL SPECIFICATIONS

## Systems Information

### Operating System

Support: Microsoft XP 32-bit; Microsoft Vista 32-bit/64-bit  
Operating Range: Up to 30 feet (10 meters)  
PHY Data Rate: 53.3Mbps, 80Mbps, 106.6Mbps, 160Mbps, 200Mbps, 320Mbps, 400Mbps, 480Mbps  
PHY Compliance: WiMedia 1.0 MAC & 1.1 PHY compliant & support for 1.2 PHY  
Frequency: 3.1GHz to 4.8GHz (WiMedia Band Group 1); 6.336~7.920 GHz (WiMedia Band Group 3)  
RF Modulation Type: QPSK/DCM  
Number of Channels: 7 Channels (3 FFI + 4 TFI)  
USB Specification: Certified Wireless USB 1.0  
Security: AES 128-bit  
Antenna Type: Omni-directional; SMA + I-PEX Dipole Antenna 81XXAA15.G05 (Type-A)

## Wireless AV Adapter Specs

Chipset: RTU 7105 Module; DisplayLink DL-165G-video  
Interface: USB 2.0 mini-B female for wired association method; HD15 female video output; 3.5mm Stereo output  
Video Resolution: 800x600 ~ 1920x1080  
Video Streaming: Up to 720p (720p only available at resolution 1280x720 or lower)  
Screen Mode: Extended and Mirror mode  
Color Depth: 32-bit True Color  
Audio Output: 2 CH DAC output  
Audio Sample Rate: 8KHz, 16KHz, 44.1KHz to 48KHz with 16-bit resolution  
Association Mode: Pre-Association, Cable Association and PIN Association;  
Stores up to 16 associated hosts  
Native Mode: For playback of high resolution video  
Reset Switch: Used for erasing association history by pressing and holding the button for 10 seconds

## Environmental Specs

Work Environment: Operation Temperature: 10~40 degrees (Celsius)  
Storage Temperature: -10~60 degrees (Celsius)

## Power Information

Power Consumption: 3.3W  
Max Output Power: -41.3 dBm/MHz  
Power Adapter: 5V, 2.5A; 100-240VAC 50-60Hz 0.5A

# CABLES TO GO™ WARRANTY STATEMENT

At Cables To Go, we want you to be totally confident in your purchase. That is why we offer a one year warranty on this device. If you experience problems due to workmanship or material defect for the duration of this warranty, we will repair or replace this device. To request a Return Merchandise Authorization (RMA) number, contact customer service at 1-800-293-4970 or [www.cablestogo.com](http://www.cablestogo.com).



Cables To Go  
3555 Kettering Blvd.  
Moraine, OH 45439  
1-800-826-7904  
[www.cablestogo.com](http://www.cablestogo.com)

# IMPORTANT SAFETY INFORMATION

**!** Do not plug the unit in any outlet that does not have enough current to allow the device to function. Refer to the specifications in this manual for power level of the unit.

**! Liquid:**  
If this unit or its corresponding power adapter has had liquid spilled on or in it, do not attempt to use the unit. Do not attempt to use this product in an outdoor environment as elements such as rain, snow, hail, etc. can damage the product.

**!** In case of a storm, it is recommended that you unplug this device from the outlet.

**!** Avoid placing this product next to objects that produce heat such as portable heaters, space heaters, or heating ducts.

**! THERE ARE NO USER SERVICEABLE PARTS**

Do not attempt to open this product and expose the internal circuitry. If you feel that the product is defective, unplug the unit and refer to the warranty information section of this manual.

©2009.Cables To Go is a trademark of Cables To Go. Microsoft and XP/Vista are either registered trademarks or trademarks of Microsoft Corporation in the United States and/or other countries. This product is not endorsed or manufactured by Microsoft Corporation.

WiMedia is a registered trademark of the WiMedia Alliance. This product is not manufactured by WiMedia Alliance.

## **CABLE ASSOCIATION WITH OTHER DEVICES**

### **ASSOCIATION CONCEPT**

In order to establish a secure wireless connection, both your Wireless USB host adapter and the Wireless AV Adapter must exchange information about each other. This is done via cable or PIN association.

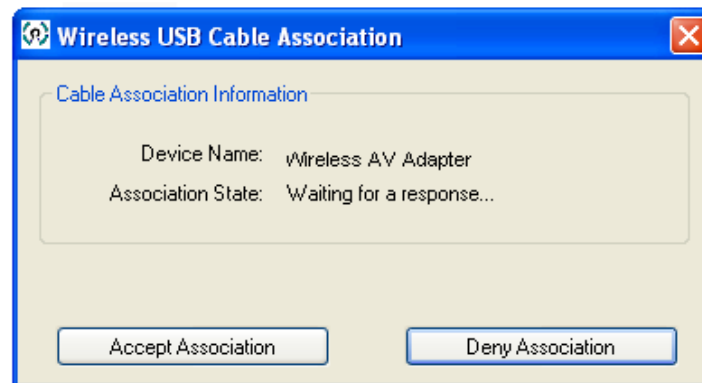
### **ASSOCIATION PROCESS**

If you purchase additional Certified Wireless USB Host Adapters, such as the TruLink Wireless USB Host Adapter, you will need to associate them with your Wireless AV Adapter. Refer to your Wireless USB device documentation for more information on its settings for association or try contacting the product's manufacturer for assistance if needed.

### CABLE ASSOCIATION PROCEDURE

Cable association steps- Examples/Figures shown used with the association of the TruLink Wireless AV Adapter when used with the TruLink Wireless USB Host Adapter. This process will vary by manufacturer of your Wireless USB host adapter.

1. Make sure that the Wireless USB host adapter utility is running. Check your Windows tray for the Wireless USB Manager icon (Figure: Wireless USB Manager).
2. Make sure the WIRELESS/WIRED switch is in the WIRELESS position
3. Plug in the power adapter for your TruLink Wireless AV Adapter.
4. Connect the USB cable between an available USB port on your computer and your Wireless AV Adapter.
5. Complete cable association by pressing the “Accept Association” button when prompted. (Figure: Cable Association)
6. Remove the USB cable from your Wireless USB Device Adapter and computer.



**Figure: Cable Association**

Associated Certified Wireless USB Devices will appear as icons in the Wireless USB Manager. When the Certified Wireless USB Devices are connected, the icon will appear in color (Figure: Wireless AV Adapter Connected).



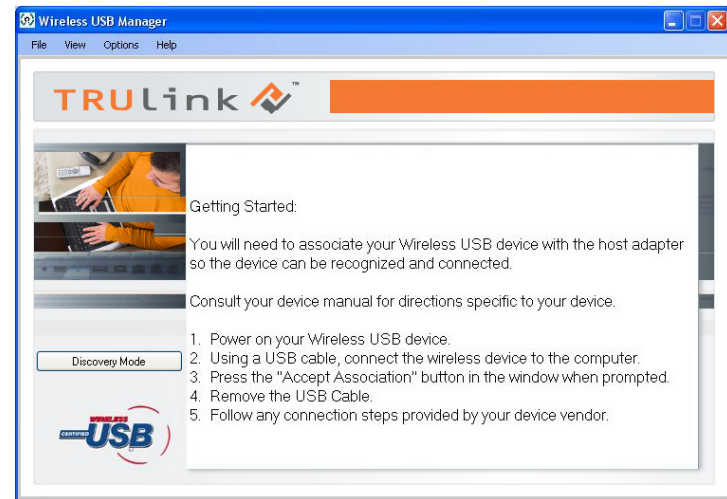
**Figure: Wireless AV Adapter Connected**

Note: You may rename or delete the Wireless USB Device by right-clicking the device icon in the Wireless USB Manager and select “rename” or “delete”.

### PIN ASSOCIATION PROCEDURE

PIN association steps: Examples/Figures shown used with the association of the TruLink Wireless AV Adapter when used with the TruLink Wireless USB Host Adapter.

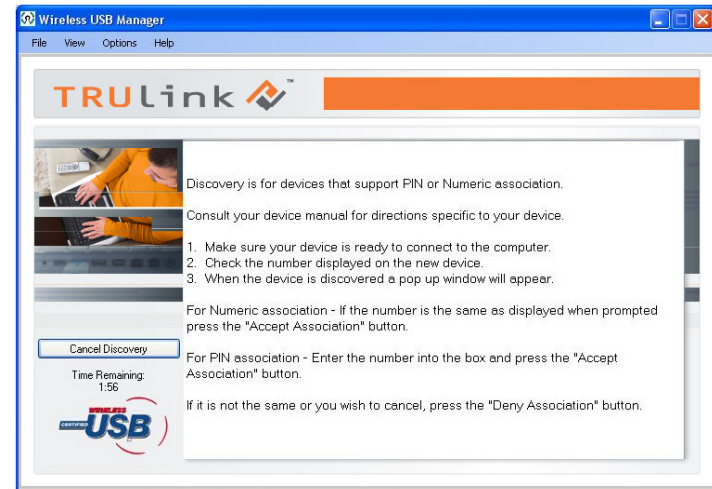
1. Make sure your Wireless AV Adapter is powered on and your Wireless USB host adapter is connected to your computer. Click the “Discovery Mode” button (Figure: Discovery Mode Screen).



**Figure: Discovery Mode Screen**



2. The Wireless USB host will search for the Wireless AV Adapter within its range. Note that this operation can take up to 20 seconds (Figure: Discovery Mode in Process).



**Figure: Discovery Mode in Process**

3. Once the Wireless USB host adapter and the Wireless AV Adapter have exchanged security information, the following dialog will appear.



**Figure: Pin Association Entry**

4. Enter the PIN of the Wireless VGA Adapter (4-digit PIN) and click Accept Association. The Wireless VGA Adapter and Wireless USB Host Adapter are now associated and ready for operation.

### **PIN CHANGE PROCEDURE**

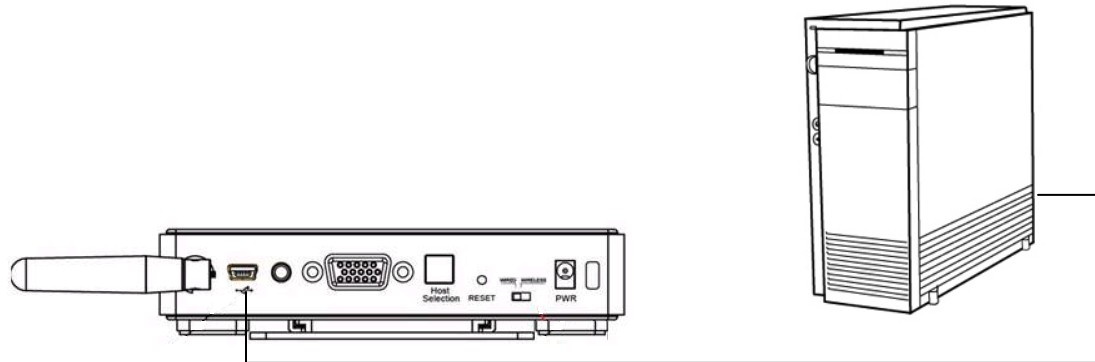
The default PIN setting for the Wireless AV Adapter is “1234”. This section gives you the instructions to change the PIN to another 4-Digit value.

**IMPORTANT:** The application used to change the PIN is not supported in Vista 64bit.

1. Make sure your Wireless USB Host Adapter and the Wireless VGA with Integrated Audio Adapter is not connected to your computer.
2. Open/Launch the application “Pin Update” (C:\Program Files\Wireless USBManager\Utility\PINUpdate). The following dialog will appear:



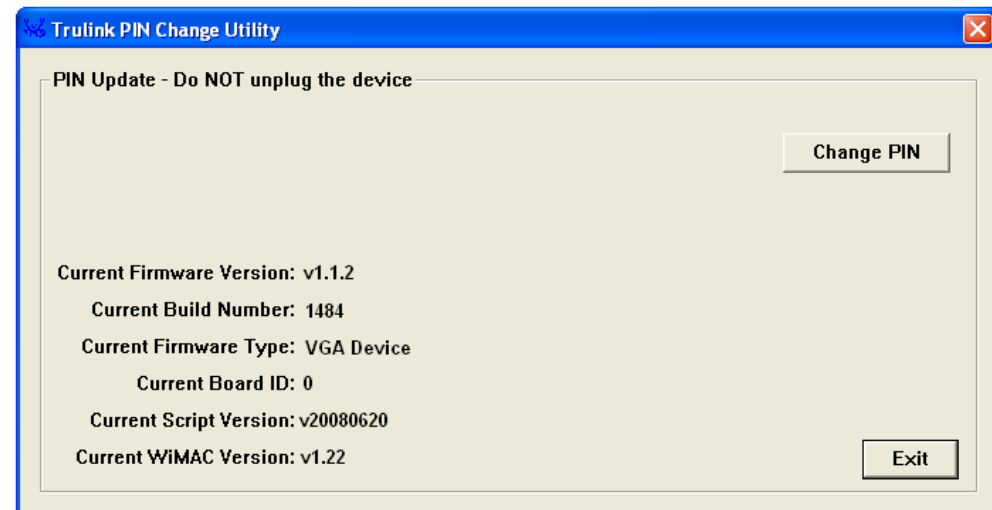
3. Make sure the WIRELESS/WIRED switch on your Wireless AV Adapter is in the WIRELESS position and the power cable is plugged in your Wireless VGA Adapter. Connect the USB cable between your Wireless AV Adapter and any available USB port on your computer.



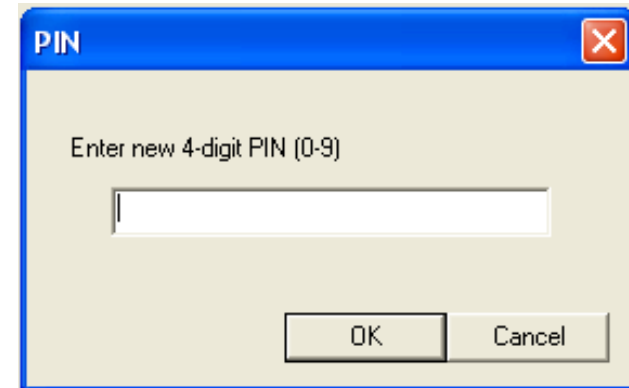
4. Click Install this driver software anyway.



5. To change pin, click "Change PIN"



6. Enter a 4-Digit PIN (0-9) and click OK.



7. If your PIN is valid, a window displaying your new PIN will appear. Press OK. Your PIN has been successfully changed. **IMPORTANT:** please exit the Trulink PIN Utility application (Exit button as shown on figure in step 5) before unplugging the USB cable between your Wireless VGA Adapter and your PC.



For more information on this product or to check for updated drivers, manuals or frequently asked questions please visit our website.

[www.cablestogo.com](http://www.cablestogo.com)



VER. 1.0.12.7.09

## Free Manuals Download Website

<http://myh66.com>

<http://usermanuals.us>

<http://www.somanuals.com>

<http://www.4manuals.cc>

<http://www.manual-lib.com>

<http://www.404manual.com>

<http://www.luxmanual.com>

<http://aubethermostatmanual.com>

Golf course search by state

<http://golfingnear.com>

Email search by domain

<http://emailbydomain.com>

Auto manuals search

<http://auto.somanuals.com>

TV manuals search

<http://tv.somanuals.com>