

DP740

INSTRUCTION MANUAL
Please read this manual carefully before operation

PRECAUTIONS

CAUTION
WARNING: OPENING THIS PRODUCT MAY RESULT IN ELECTRIC SHOCK. DO NOT REMOVE THE COVER (OR BACK) OF THE UNIT. REFER SERVICING ONLY TO QUALIFIED SERVICE PERSONNEL.

CAUTION
The lightning flash with arrowhead symbol within an equilateral triangle is intended to alert the user to the presence of unutilized "dangerous voltage" within the product's enclosure that may be of sufficient magnitude to constitute a risk of electric shock.

For Customer Use:
Enter below the serial number that is located on the bottom of the unit. Retain this information for future reference.
Model No. DP740
Serial No. _____

For recycling or disposal information about this product, please contact your local authorities or the Electronics Industries Alliance: www.eia.org.

PRECAUTIONS

WARNING:
To prevent fire or shock hazard, do not expose this device to rain or moisture. Dangerous high voltage is present inside the enclosure. Do not open the cabinet.
CAUTION: To prevent electric shock, match wide blade of plug to wide slot of outlet and fully insert.

FCC Statement:
This device complies with Part 15 of the FCC Rules. Operation is subject to the following two conditions:
(1) This device may not cause harmful interference, and
(2) This device must accept any interference received, including interference that may cause undesired operation.

Note:
This equipment has been tested and found to comply with the limits for Class B digital devices, pursuant to Part 15 of the FCC rules. These limits are designed to provide reasonable protection against harmful interference in a residential installation. This equipment generates, uses and can radiate radio frequency energy and, if not installed and used in accordance with the instructions, may cause harmful interference to radio communications. However, there is no guarantee that interference will not occur in a particular installation. If this equipment does cause harmful interference to radio or television reception, which can be determined by turning the equipment off and on, the user is encouraged to try to correct the interference by one or more of the following measures:
- Reorient or relocate the receiving antenna.
- Increase the separation between the equipment and receiver.
- Connect the equipment into an outlet on a circuit different from that to which the receiver is connected.
- Consult the dealer or an experienced radio/TV technician for help.
Use of shielded cable is required to comply with Class B limits in Subpart B of Part 15 of the FCC rules.
Do not make any changes or modifications to the equipment unless otherwise specified in the manual. If such changes or modifications should be made, you could be required to stop operation of the equipment.

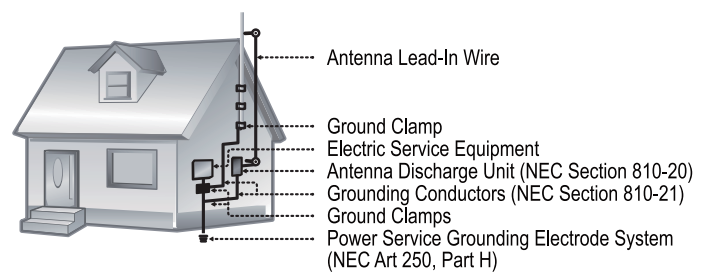
IMPORTANT SAFETY INSTRUCTIONS

- Read Instructions: All the safety and operating instructions should be read before the product is operated.
- Retain Instructions: The safety and operating instructions should be retained for future reference.
- Head Warnings: All warnings on the product and in the operating instructions should be adhered to.
- Follow Instructions: All operating and usage instructions should be followed.
- Cleaning: Unplug this product from the wall outlet before cleaning. Do not use liquid cleaners or aerosol cleaners. Use a damp cloth for cleaning.
- Attachments: Use only attachments recommended by the manufacturer. Use of other attachments may be hazardous.
- Water and Moisture: Do not use this product near water (e.g., near a bath tub, washbowl, kitchen sink, laundry tub, in wet basements, or near a swimming pool and the like).
- Accessories: Do not place this product on an unstable cart, stand, tripod, bracket, or table. Use only with carts, stands, tripods, brackets, or tables recommended by the manufacturer or sold with the product. Any mounting of the product should follow the manufacturer's instructions and should use a mounting accessory recommended by the manufacturer.
- A product and cart combination should be moved with care. Quick stops, excessive force, and uneven surfaces may cause the product and cart combination to overturn.
- Ventilation: Slots and openings in the cabinet are provided for ventilation to ensure reliable operation of the product and to protect it from overheating. These openings should never be blocked by placing the product on a bed, sofa, rug, or other similar surface. This product should not be placed in a built-in installation such as a bookcase or rack unless proper ventilation is provided or the manufacturer's instructions have been adhered to.
- Power Sources: This product should be operated only from the type of power source indicated on the rating label. If you are not sure of the type of power supply to your home, consult your product dealer or local power company. For products intended to operate from battery power or other sources, refer to the operating instructions.



IMPORTANT SAFETY INSTRUCTIONS

- Grounding or Polarization: This product may be equipped with a polarized alternating-current line plug that has one blade wider than the other. This plug will only fit into the power outlet and is provided for your protection. If you are unable to insert the plug fully into the outlet, by reversing the direction of the plug. If the plug should still fail to fit, contact an electrician to replace the obsolete outlet. Do not defeat the safety purpose of the polarized plug.
- Power-Cord Protection: Power supply cords should be routed so that they are not likely to be walked on or run over by items placed upon or against them, paying particular attention to cords at plugs, convenience receptacles, and at the point where they exit from the product.
- Protective Attachment Plug: The product may be equipped with an attachment plug with overload protection. This is a safety feature. See the operating instructions for replacement or directions to reset the protective device. If replacement of the plug is required, be sure the service technician has used a replacement plug that has the same overload protection as the original plug as specified by the manufacturer.
- Outdoor Antenna Grounding: If an outside antenna is connected to the product, be sure the antenna system is grounded so as to provide some protection against voltage surges and built-up static charges. Article B10 of the National Electrical Code, ANSI/NFPA 70 provides information with regard to proper grounding of the mast and supporting structure, grounding of the lead-in wire to an antenna-discharge unit, size of grounding conductors, location of antenna-discharge unit, connection to grounding electrodes, and requirements for the grounding electrode (see figure).



IMPORTANT SAFETY INSTRUCTIONS

- Lighting: For added protection for this product, unplug it from the wall outlet and disconnect the antenna or cable system during a lightning storm or when it is left unattended and unused for long periods of time. This will prevent damage to the product due to lightning or power-line surges.
- Power Lines: An outside antenna system should not be located in the vicinity of overhead power lines or other electric, light or power circuits, or where it can fall into such power lines or circuits. When installing an outside antenna system, extreme care should be taken to keep from touching such power lines or circuits, as contact with them might be fatal.
- Overheating: Do not overload wall outlets, extension cords, or integral convenience receptacles as this can result in a risk of fire or electric shock.
- Object and Liquid Entry: Never push objects of any kind into this product through openings as they may touch dangerous voltage points or short-circuit parts that could result in a fire or electric shock. Never spill liquid of any kind on the product.
- Service: Do not attempt to service this product yourself as opening or removing covers may expose you to dangerous voltage or other hazards. Refer all servicing to qualified service personnel.
- Damage Requiring Service: Unplug this product from the wall outlet and refer servicing to qualified service personnel under the following conditions: a) when the power supply cord or plug is damaged; b) liquid has been spilled on or objects have fallen into the product; c) the product has been exposed to rain or water; d) the product does not operate normally by following the operating instructions; Adjust only those controls that are covered by the operating instructions as improper adjustment of other controls may result in damage and will often require extensive work by a qualified technician to restore the product to its normal operation; e) if the product has been dropped or damaged in any way; f) when the product exhibits a distinct change in performance—this indicates a need for service.
- Replacement Parts: When replacement parts are required, be sure that your service technician has used replacement parts specified by the manufacturer or have the same characteristics as the original part. Unauthorized substitutions may result in fire, electric shock, or other hazards.
- Safety Check: Upon completion of any service or repairs to this product, ask the service technician to perform safety checks to ensure that the product is in proper operating condition.

IMPORTANT SAFETY INSTRUCTIONS

- Wall or Ceiling Mounting: The product should be mounted to a wall or ceiling only as recommended by the manufacturer.
- Heat: The product should be situated away from heat sources such as radiators, heat registers, stoves, or other products (including amplifiers) that produce heat.

TABLE OF CONTENTS

PRECAUTIONS 2
IMPORTANT SAFETY INSTRUCTION 4
TABLE OF CONTENTS 8
PACKAGE CONTENTS 9
FEATURES 10
UNIT VIEW 11
Function Buttons 11
Getting Started 12
Installing a Memory Card 12
Powering your Digital Photo Frame 12
Turning Your Photo Frame On/Off 13
Photo 13
Changing View 14
Zoom 14
CALENDAR 15
SETUP 16
Photo Setup 16
Calendar Setup 17
System Setup 18
Reset 18
TROUBLE SHOOTING 20
SPECIFICATION 20

SPECIFICATION

Display Type	7" Full Color TFT LCD
Display Resolution	800x480
Memory	MS Card SD/MMC/SD Card Full-size USB
Photo Format	JPEG / JFIF
USB Host	USB 2.0 High-Speed
Power Supply	DC 5V, 1A, 100-240V AC Adapter

Photos are copyright © 2008.
Specifications and subject to change without prior notice.

2

3

4

5

6

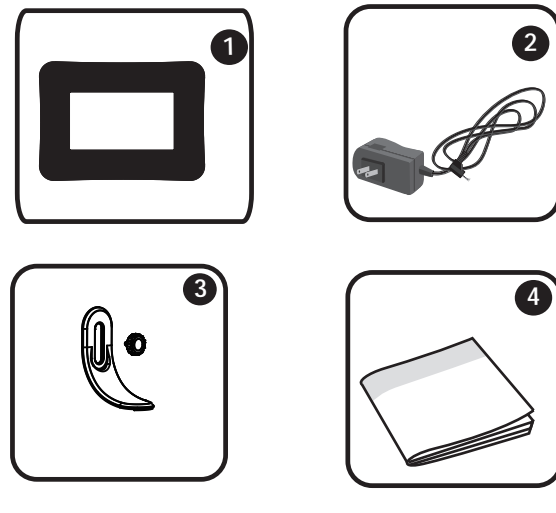
7

8

9

PACKAGE CONTENTS

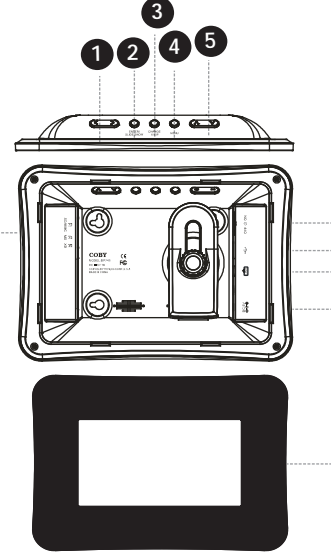
Please make sure that the items shown below are included in the package. Should an item be missing, please contact the retail retailer from which you purchased this product.



FEATURES

- 7" wideScreen TFT LCD color display
- Displays JPEG, JPG photo files
- Photo slideshow mode
- Calendar and clock with alarm timer
- SD, MMC, MS, XD card slot
- Full-size USB port for use with flash memory drives
- Wall-mountable design with detachable stand

UNIT VIEW



- Function Buttons**
- Up Button**: Press to move the cursor left/right in menu setting and also can be used to turn pages in the full screen display.
 - Enter/Slideshow**: Press for menu selection. In photo full-screen display mode, press and hold this button to start/stop photo slideshow.
 - Change View**: Press this button to shift between the view modes: Crop to Fill, Full Screen and Fit to Screen in photo (full-screen) display mode. In Calendar Mode, press this button to change the calendar mode.
 - Menu**: Press to exit. On the Main Menu Screen, press this button to move the cursor to the memory choice list.
 - Down/Up button**: Press to move the cursor down/up during menu selection. On the Main Menu Screen, select the desired memory device, and then press Enter button to confirm.
 - Card slot**: Connect the SD/MMC/MS/XD card.
 - Power switch**: To turn photo frame on/off.
 - Full-size USB port**: To connect with USB flash drives.
 - Mini-size USB port**: To connect with computer.
 - Power Jack**: Connect with the power source.
 - TFT Display**.

GETTING STARTED

- Installing a Memory Card**
Your picture frame supports the following types of memory cards:
- Memory Stick (MS)
 - XD-Picture (XD)
 - Secure Digital (SD)
 - Multi Media Card (MMC)
 - USB Flash Storage Drive

Simply insert the memory card of your choice into its corresponding card slot located on the left panel of the photo frame. Take care to orient the card in the proper direction.

Powering your Digital Picture Frame
Your Picture Frame should be connected to an AC 100-240V wall outlet.

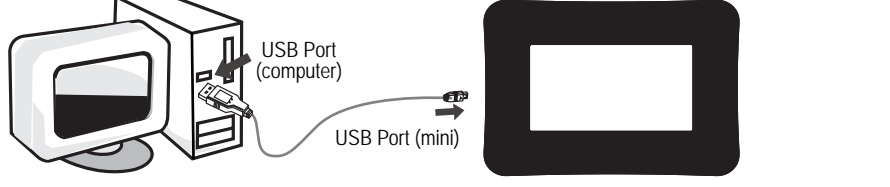
- Using the supplied power adapter, plug one end of the adapter into your photo frame's Power In Jack and plug the other end into an AC 100-240V wall outlet.

Do not connect the power plug to a power outlet other than that which is indicated here or on the label as this may result in the risk of fire or electric shock.
Use only AC adapters of the type specified here. Failure to do so may cause a fire or damage the player.

GETTING STARTED

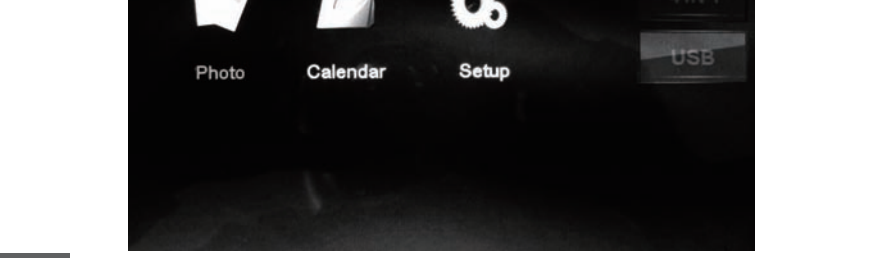
- Turning Your Photo Frame On/Off**
- To turn your photo frame on, set the Power Switch to the "On" position.
 - To turn your photo frame off, set the Power Switch to the "Off" position.

Connecting to a Computer
Connect the photo frame to your computer with a USB cable. Upon connection:
• Your computer will automatically recognize the memory cards installed in your photo frame. Icons representing your installed memory cards will appear as "Removable Disk" when you open "My Computer".



Make sure that there's no USB flash drive connecting to the DP frame before connecting the DP frame to a computer.

Upon turning on the power, your photo frame will display the "Main menu" screen shown below:



GETTING STARTED

Inserted a card icon that is in-color indicates that a memory card has been inserted (not installed) in the corresponding slot. No card icon that is grayed-out indicates that a memory card has not been inserted in the corresponding slot and is not available for use. Selected: A highlighted frame indicates that the card slot is selected. Only card slots with an installed memory card may be selected.

The demo slideshow will automatically start in approximately 8 seconds if you don't press any button.

Photo
Select the Photo icon on the main menu screen and press Enter button to enter the Photo mode. If your photo frame is set to slideshow in photo setup, it will display the photo in slideshow mode. You can press Menu button to enter thumbnail mode, and press Menu button again to exit. If your photo frame is set to thumbnail in photo setup, it will display in thumbnail mode. In this mode, to display a photo/full screen, use the direction button to select a thumbnail and press enter button to confirm.

Changing View
Press the CHANGE VIEW button to change between the screen ratio modes Full Screen, Fit to Screen and Crop to Fill.

Zoom
To zoom in the pictures, press "+" button. To zoom out in the pictures, press "-" button. Each successive press of "+" button will change the level of magnification as shown below: 125% > 150% > 175% > 200% > 225% > 250% > ZOOM OFF

Note: You can only press the "+" button to zoom out the amplified pictures, but can't zoom out the original pictures.

To the amplified picture(s), press Up/Down button to move it up/down; press and hold "+"/- button to zoom to 8x left/right.

The Photo List will display supported Photo files, only. Your photo frame can display baseline JPEG / JPG files.

CALENDAR

Calendar
To view time and date, select Calendar on the main menu screen and press Enter button to confirm. Then the calendar will show as below.



- You can adjust the time and date in Calendar setup menu, please refer to Calendar setup in the Setup menu.
- There are three display modes available, you can press Change View button to select the desired mode.
- Press "+" button to view the previous/next month.
- If there are available pictures, it will be displayed on the right of the window in slideshow mode.
- Press Menu button to exit.

SETUP

Photo Setup

Item	Instruction	Default setting
Display Mode	Sets the photo display mode for entering the Photo Mode from the Main Menu.	Slideshow
Brightness	Sets the brightness of the screen.	F
Contrast	Sets the Contrast of the screen.	Z
Saturation	Sets the Saturation of the screen.	Z
Slide Show Duration	Sets the time interval of slideshow photos.	55sec.
Transition Effect	Sets the photo slideshow effect.	Random
Slideshow Repeat	Sets the photo slideshow repeat function on/off.	On

Calendar Setup

Item	Instruction	Default setting
Display Mode	Sets the Calendar display mode.	Calendar Time/Slideshow
Set Date	To set Date: Press the UP / DOWN button to select the number of the date and year, and press the LEFT/RIGHT button to adjust.	
Clock Mode	Sets the Clock Mode.	24-hour
Set Time	To set the Clock Time: Press the UP / DOWN button to select the time, and press the LEFT/RIGHT button to adjust.	

Alarm Set
To set an Alarm Time: Press the UP / DOWN button to select the ON/OFF and time and press the LEFT/RIGHT button to select the desired time and On.
To delay the alarm timer, when the alarm timer sounds, press the ENTER button to turn it off temporarily, press any other button to delay. The alarm timer will sound again 9 minutes, 18 minutes and 27 minutes later. The alarm will then turn off automatically.

Alarm Frequency/Source	Sets the Alarm Frequency	Mon to Fri, Repeat
------------------------	--------------------------	--------------------

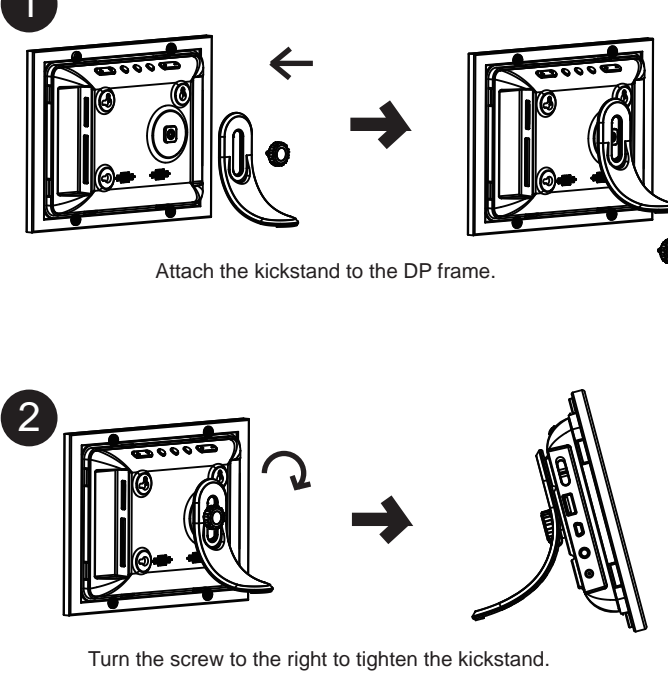
SETUP

System Setup

Item	Instruction	Default setting
Language	Sets the menu language of the photo frame.	English
Brightness	Sets the brightness of the screen.	F
Contrast	Sets the Contrast of the screen.	Z
Saturation	Sets the Saturation of the screen.	Z
Slide Show Duration	Sets the time interval of slideshow photos.	55sec.
Transition Effect	Sets the photo slideshow effect.	Random
Slideshow Repeat	Sets the photo slideshow repeat function on/off.	On
Auto boot time	Sets the auto boot/start time for the photo frame.	
Auto Shut time	1. Make sure the Power switch on the DP frame is set to ON. 2. Press the UP/DOWN button to select On / Off set time. 3. Press the LEFT/RIGHT button to select the desired time.	
Auto-power frequency	Sets the Auto-Power On / Off Frequency.	Mon. to Fri.
Reset	Resets all settings to their factory default state.	

KICKSTAND

Using the Kickstand



TROUBLESHOOTING

If you have a problem with this device, please read the troubleshooting guide below and check our website at www.cobyusa.com for Frequently Asked Questions (FAQs) and firmware updates. If these resources do not resolve the problem, please contact Technical Support.

ADDRESS
COBY Electronics Technical Support
150 Knowlton Way
Savannah, GA 31407
EMAIL
techsupport@cobyusa.com
WEB
www.cobyusa.com
PHONE
800-727-3592: Weekdays 8:30AM-6:00PM EST
609-727-3592: Saturdays 9:00AM-5:30PM EST
718-416-3197: Weekdays 8:00AM-5:30PM EST

The player does not turn on.
• Make sure the unit has been powered on manually (i.e., the Power Switch has been physically set to the ON position).
• Ensure that the power cord has been properly connected to the power outlet.

I cannot select a memory card.
• Ensure that a memory card has been installed.
• Ensure that the memory card is properly installed.
• Ensure that the memory card is not defective.

The alarm does not work.
• Make sure the Alarm Setting is set properly in Calendar Setup in Setup Menu.

Free Manuals Download Website

<http://myh66.com>

<http://usermanuals.us>

<http://www.somanuals.com>

<http://www.4manuals.cc>

<http://www.manual-lib.com>

<http://www.404manual.com>

<http://www.luxmanual.com>

<http://aubethermostatmanual.com>

Golf course search by state

<http://golfingnear.com>

Email search by domain

<http://emailbydomain.com>

Auto manuals search

<http://auto.somanuals.com>

TV manuals search

<http://tv.somanuals.com>