

# COBY®

## CV890

### 2.4GHz Wireless Stereo Headphone



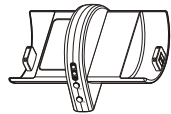
**COBY Customer Service Department**  
Monday-Friday 8:00 AM - 11:00 PM EST, 1-800-681-2629 or 718-416-3197  
Monday-Friday 6:30 PM - 11:00 PM EST, 1-800-727-3592  
Saturday-Sunday 9:00 AM - 11:00 PM EST, 1-800-727-3592

#### Unpacking

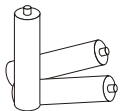
Check that you have the following items when you open the packaging:



HEADPHONE



TRANSMITTER



BATTERIES



AUDIO LINE



AUDIO CONVERSION LINE



AC ADAPTER

#### Thank you for selecting the COBY CV-890 Wireless Stereo Headphone System.

Before operating the unit, please read this manual thoroughly and retain it for future reference, some features are:

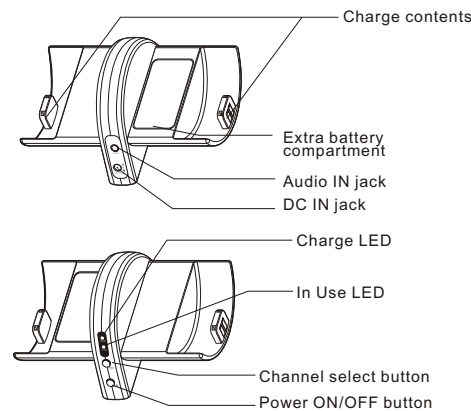
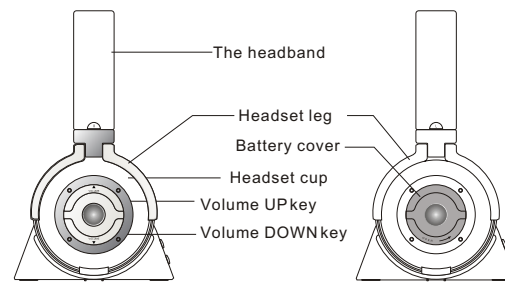
- Wireless system that allows you to listen to a program free from the restriction of a cord.
- High fidelity sound reproduction.
- A compact transmitter with an AC power adaptor (supplied) enables simple charging of the headphone batteries. Just by placing the headphones on the transmitter, headphone batteries can be charged.
- Comfortable Circum-aural headphones with self adjusting head band.
- As power saving feature, the transmitter automatically turns ON when the audio signal is detected and OFF when the signal is not received.

#### Notes on Receiving Performance

The system for this equipment utilizes very high frequency signals in the 2.4GHz band so the receiving performance may deteriorate due to the surroundings. Some examples of conditions that may reduce the possible receiving range or cause interference with reception.

- Inside a building with walls containing steel beams.
- Area with many steel file cabinets, etc.
- Area with many electrical appliances capable of generating electromagnetic noise.
- Transmitter is placed on a metal instrument.
- Area facing roadways.
- Noise or interfering signals exist in the surroundings due to radio transceivers in trucks, etc.
- Noise or interfering signals exist in the surroundings due to wireless communication systems installed along roadways.

#### Description



#### Warning

To prevent fire or shock hazard, do not expose the unit to rain or moisture.

To avoid electrical shock, do not open the cabinet. Refer servicing to qualified personnel only.

You are cautioned that any changes or modifications not expressly approved in this manual could void your authority to operate this equipment.

If you have any questions about this product, you may call:  
**COBY Customer Service Department**  
Monday-Friday 8:00 AM - 11:00 PM EST, 1-800-681-2629 or 718-416-3197  
Monday-Friday 6:30 PM - 11:00 PM EST, 1-800-727-3592  
Saturday-Sunday 9:00 AM - 11:00 PM EST, 1-800-727-3592  
You can also reach us online at [techsupport@cobyyusa.com](mailto:techsupport@cobyyusa.com) or [customerservice@cobyyusa.com](mailto:customerservice@cobyyusa.com)

#### FCC Rules

This equipment has been tested and found to comply with the limits for a Class B digital device, pursuant to Part 15 of the FCC rules. These limits are designed to provide reasonable protection against harmful interference in a residential installation. This equipment generates, uses and can radiate radio frequency energy and, if not installed and used in accordance with the instructions, may cause harmful interference to radio communications. However, there is no guarantee that interference will not occur in a particular installation. If this equipment does cause harmful interference to radio or television reception, which can be determined by turning the equipment off and on, the user is encouraged to try to correct the interference by one or more of the following measures:

- Reorient or relocate the receiving antenna.
- Increase the separation between the equipment and receiver.
- Connect the equipment into an outlet on a circuit different from that to which the receiver is connected.
- Consult the dealer or an experienced radio/TV technician for help.

#### Install the batteries

The supplied rechargeable Ni-MH batteries are not charged from the first time you use them. Be sure to charge them before use. To charge, the headphones, place them on the transmitter.

- 1 Turn the battery cover according to the direction of the arrowhead silk and open it.



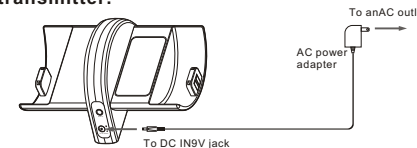
- 2 Insert the supplied rechargeable Ni-MH batteries into the battery compartment matching the correct terminals between the batteries and the compartment.



- 3 Close the battery compartment cover according to the opposite direction of the arrowhead silk.



- 4 Connect the supplied AC power adaptor to the transmitter.

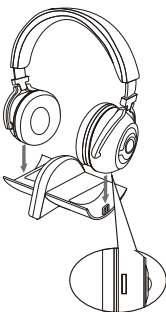


#### Battery Caution

To reduce the risk of fire or injury to persons, read and follow these instructions:

- For the wireless headphone, use only 3AAA 1.2V 600mAh Nickel Metal Hydride (Ni-MH) batteries (included).
- Do not dispose of the batteries in a fire. The cells may explode. Check with local codes for possible special disposal instructions.
- Do not open or mutilate the batteries. Released electrolyte is corrosive and may cause damage to the eyes or skin. It may be toxic if swallowed.
- Exercise care in handling batteries in order not to short the battery with conducting materials such as rings, bracelets, and keys. The battery or conductor may overheat and cause burns.
- Do not attempt to rejuvenate the batteries identified for use with this product by heating them. Sudden release of the battery electrolyte may occur causing burns or irritation to eyes or skin.
- When inserting batteries into this product, the proper polarity or direction must be observed. Reverse insertion of batteries can cause charging, and that may result in leakage or explosion.
- Remove the batteries from this product if the product will not be used for a long period of time (several months or more) since during this time the battery could leak in the product.
- Do not store this product, or the batteries identified for use with this product, in high temperature areas. Batteries that are stored in a freezer or refrigerator for the purpose of extending shelf life should be protected from condensation during storage and defrosting.

- 5 Put the headphone on the transmitter so that the headphone's contact meets the transmitter's contact pin while making sure that the charging indicator lights in red.



The charging hole, and the headphone's contact is in it

Charging is completed in about 16 hours and the charging indicator goes off.

When placing the headphones on the transmitter, be sure to hold them level with both hands and that the right and left housings are placed straight down on the transmitter, and then tilt them back as illustrated above.

#### When the indicator does not light in red

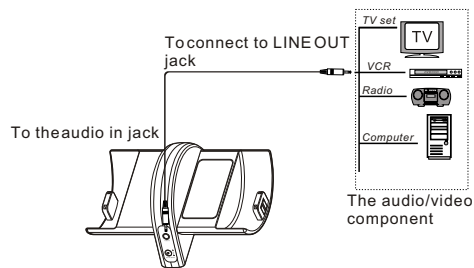
Check if the right and left headphones are rested on the transmitter correctly. The indicator will not light up if the headphone's contact does not meet the transmitter's contact pin. Remove the headphones and replace them on the transmitter again so that the indicator lights in red.

#### Notes on Batteries

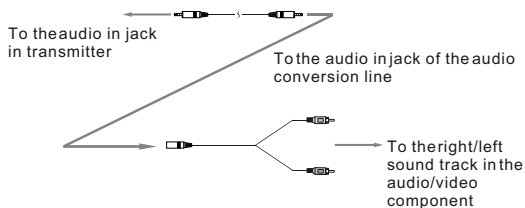
- Do not charge the dry battery.
- Do not carry a dry battery together with coins or other metallic objects. It can generate heat if the positive and negative terminals of the battery accidentally come into contact with metallic objects.
- If you are not going to use the unit for a long time, remove the battery to avoid damage from battery leakage or corrosion.

## Setting up the transmitter

### 1 Connect the transmitter to audio/video equipment.

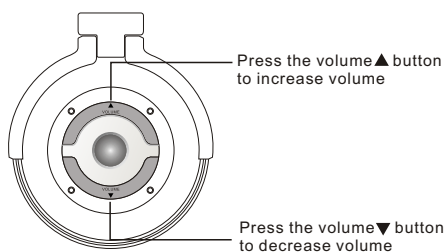


**NOTE:** If your audio/video component have right&left sound track stereo plug system, you can use the audio connect line and the audio conversion line to connect it.



**NOTE:** The transmitter at a frequency that may cause interference to nearby TVs, Cordless Telephone or other wireless systems. In such case, place the transmitter away from the wireless system.

### 5 Turn up the volume to a moderate level with the volume UP/DOWN button.



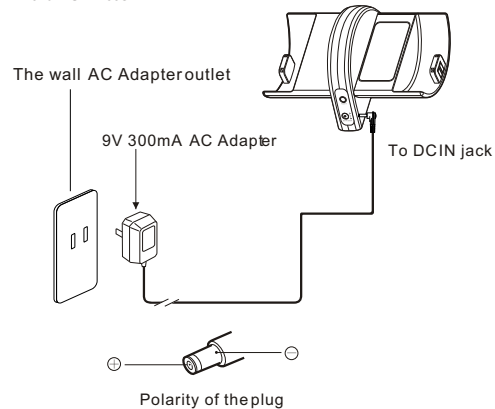
### The effective areas of the transmitter

The optimum distance is up to approximately 30 feet without the system picking up some interference. However, the distance may vary according to the surroundings and environment. If the system picks up some noise while using it within the above mentioned distance, reduce the distance between the transmitter unit and the headphones, or select another channel.

### NOTES:

- When you use the headphones inside the effective areas of the transmitter, the transmitter can be placed in any direction from the listener.
- Even within the signal reception area, there are some spots (dead spot) where the RF signal can not be received. This is a characteristic inherent to RF signals, and does not indicate malfunction. By slightly moving the transmitter, location of the dead spot can be changed.

### 2 Connect the supplied AC power adapter to the transmitter.



**NOTE:** Use only the supplied AC power adapter. Do not use any other AC power adapter. Connect the AC power adapter to a continuous power supply. Place the transmitter close the AC outlet so that you can plug the AC power adapter easily.

**WARNING:** Charging compartment only and explosion if charging the dry battery !

## Troubleshooting

### No sound/Muffled sound

- Turn on the transmitter first, then put on the headphones;
- Check the connection of the audio/video equipment or the AC Power adapter;
- Check that the audio/video equipment is turned on;
- Turn up the volume on the connected audio/video equipment, if the transmitter is connected to the headphones jack;
- Change the channel with the CH button on the transmitter;
- The headphone's POWER indicator light is weak or turned off;

*Charge the supplied rechargeable batteries or if the POWER indicator is still off after charging the supplied rechargeable batteries, take the headphones to a COBY dealer for replacement of the rechargeable battery.*

### Loud background noise

- Move closer to the transmitter. As you move away from the transmitter, more noise is likely to be heard;
- If the transmitter is connected to the headphone's jack, turn up the volume of the connected audio/video equipment;
- Change the channel with the CH button on the transmitter;
- The headphone's POWER indicator light is weak or turned off;

*Charge the supplied rechargeable batteries or if the POWER indicator is still off after charging the supplied rechargeable batteries, take the headphones to a COBY dealer for replacement of the rechargeable battery.*

## Operating the system

### Listening to a program

#### Before listening

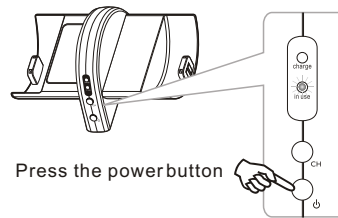
To prevent your ears from being damaged, first lower the volume of headphones.

#### 1 Turn on the audio/video equipment connected to the transmitter.

Setting the volume control of the audio source equipment as high as possible but not so high that the audio signal becomes distorted.

#### 2 Remove the headphones from the transmitter and press the button to turn on the power of transmitter.

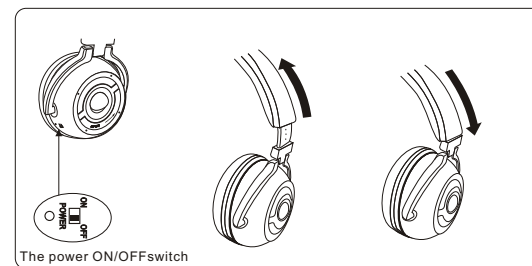
The transmitter's IN USE indicator will light in green.



Press the power button

#### 3 Turn on the power of headphone and put on the headphones.

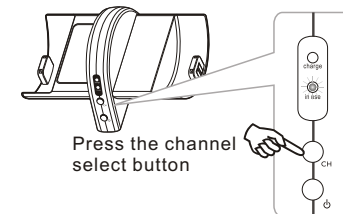
The power ON/OFF switch is located in the right headphone.



#### 4 Coupling the code of transmitter and headphone.

Press the volume UP and DOWN button simultaneously until you hear a low beep sound, press and hold the CH button on the transmitter, then you will hear a higher beep sound, which shows you are successful in coupling code.

#### 5 Select the frequency with the CHANNEL selector button.



Press the channel select button

Press the CH button on the transmitter to select the clearest one to provide the best possible reception. There are 10 channels to be selected.

## WARRANTY

### FULL 90 DAYS LIMITED WARRANTY

COBY ELECTRONICS CORP. (COBY) warrants this product to the original purchaser to be free from defects in material or workmanship under normal use for 90 DAYS from the date of original purchase. COBY agrees at our option under this warranty, to repair or replace it with a new or reconditioned product at no additional charge. Our warranty, of course, does not cover any product which has been subject to neglect, unreasonable use, accident, violation of operating instructions, or any product that has been repaired or modified by an unauthorized service agent.

To obtain factory service, return this unit freight-prepaid to the address shown below within the duration of this warranty. Enclose \$6.00 for each item in the form of money order made payable to COBY ELECTRONICS CORP. to cover the cost of postage and handling. Also, include a copy of the sales receipt to show the proof of purchase and a detailed description of the problem. The unit(s) must be packaged in such a way as to reasonably protect it from possible shipping damage. For further information, email techsupport@cobyusa.com or call 1-800-681-2629, 1-718-416-3197 or write to:

**COBY ELECTRONICS CORP.**  
Customer Service Dept.  
56-65 Rust Street  
Maspeth, N.Y. 11378

Coby's liability under any legal theory for any loss or damage in any way related to this product shall in no event exceed the sales price of this product. In no event shall COBY be liable for any incidental or consequential damages resulting from the use of, or inability to use this product. Repair or replacement as provided under this warranty is the exclusive remedy of the consumer.

Except to the extent prohibited by law, no express or implied warranty of merchantability or fitness for a particular purpose on this product shall not extend beyond the period of this warranty. Some states prohibit the exclusion or limitation of incidental or consequential damages, so that the above limitations or exclusion may not apply to you. This warranty gives you specific rights, and you may also have other rights which may vary from state to state.

## Free Manuals Download Website

<http://myh66.com>

<http://usermanuals.us>

<http://www.somanuals.com>

<http://www.4manuals.cc>

<http://www.manual-lib.com>

<http://www.404manual.com>

<http://www.luxmanual.com>

<http://aubethermostatmanual.com>

Golf course search by state

<http://golfingnear.com>

Email search by domain

<http://emailbydomain.com>

Auto manuals search

<http://auto.somanuals.com>

TV manuals search

<http://tv.somanuals.com>