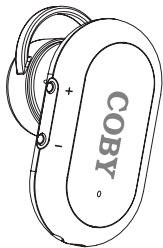


COBY®

**Wireless Micro Headset with
Bluetooth Technology**

CV-M225



Instruction Manual

Please read this manual carefully before operation

Table of Contents

| | |
|---|----|
| TABLE OF CONTENTS | 2 |
| PACKAGE CONTENTS | 3 |
| LOCATION OF CONTROLS | 4 |
| POWERING YOUR HEADSET | 5 |
| Charging Your Headset..... | 5 |
| Turning Your Headset On and Off | 6 |
| USING YOUR HEADSET | 7 |
| Pairing Your Headset | 7 |
| Adjusting the Volume | 9 |
| Overview of Controls During Use with Cellular Phones..... | 10 |
| TROUBLESHOOTING | 12 |
| IMPORTANT INFORMATION..... | 15 |
| GUIDE FOR SAFE & EFFECTIVE USE | 17 |
| CONFORMITY DECLARATION | 20 |
| SPECIFICATIONS | 21 |

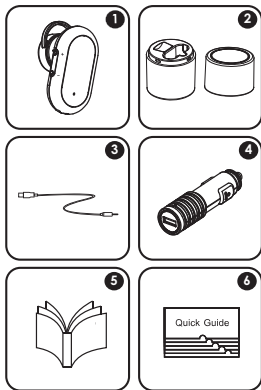
Package Contents

The Coby Micro Headset CV-M225 is designed to be the lightest and smallest full-featured Bluetooth earpiece you can buy. Although small in profile, it uses the latest Bluetooth v2.0 chipset with digital signal processing to provide strong connectivity, great sound, and extended battery life.

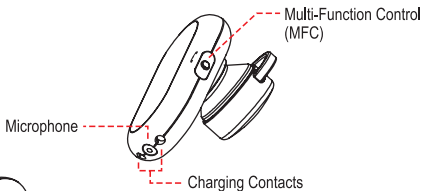
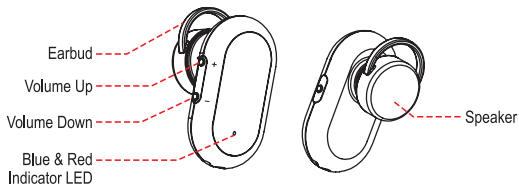
This package contains the following:

1. Micro Headset CV-M225
2. Charger Base
3. USB Power Cable
4. DC Car Charger
5. Instruction Manual
6. Quick Guide

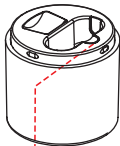
The accessories may be subject to change for the sake of product improvement. Changes may be made without prior notice.



Location of Controls



Charging Port Line-In



Charge Indicator

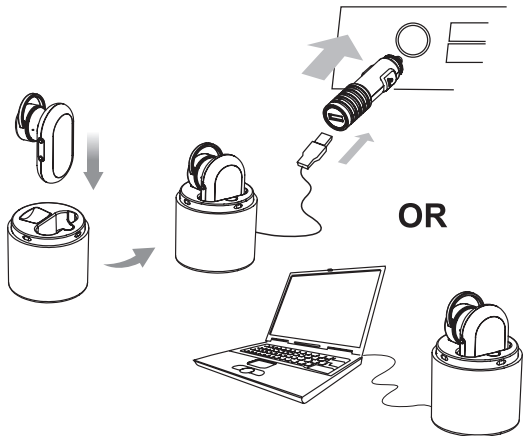


Cover

Powering Your Headset

Charging Your Headset

The headset will begin charging when inserted into the charging base and the base is connected to a power supply. The LED will light red when charging; when charging is complete, the LED will turn off.



Powering Your Headset

Turning Your Headset On and Off

To turn your headset on:

Press and hold the multi-function control for about 6 seconds. The LED will flash blue and there will be a short tone from the speaker. The headset is now in standby mode.



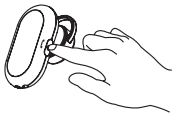
6 seconds



Low Battery Prompt: The LED will flash red and a short tone will sound from the speaker when the battery power is low. If the battery power continues to decrease, the headset will turn off automatically.

To turn your headset off:

Press and hold the multi-function control for about 2 seconds. The LED will flash red and there will be a short tone from the speaker. The headset is now off.



2 seconds

Using Your Headset

Pairing Your Headset

Pairing means creating a trusted relationship between two or more Bluetooth devices. The devices must be paired before they can communicate with each other. Pairing identification is stored for later use, and devices will recognize each other the next time they are connected. The CV-M225 will store up to 7 device IDs in memory, although it can only connect to one device at a time.



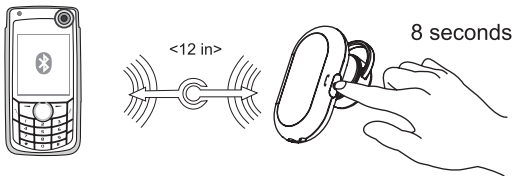
The CV-M225 should be turned off before starting the pairing procedure.

To pair your headset with a cellular phone:

1. Ensure that the cellular phone and headset are within 1 foot of each other. Be sure to turn off any other Bluetooth or Wi-Fi equipment in the area.
2. On the headset, press and hold the multi-function control (MFC) for about 8 seconds until the LED flashes red and blue alternately.

Using Your Headset

3. Activate the Bluetooth search function of the cellular phone. The message “CV-M225” will appear in the phone’s display when detected.



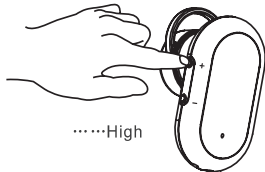
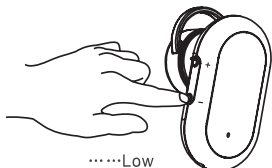
4. If necessary, enter the passkey “1234”.
5. If pairing is successful, the LED of the CV-M225 will flash blue intermittently. The headset is now in standby mode.
6. You can abort pairing at any time by pressing and holding the MFC for about 2 seconds until the red and blue LED turns off. The headset is now turned off. Previous pairing (if any) remains.

Using Your Headset

Adjusting the Volume

During a call, the volume can be increased with the volume button, which will be accompanied by a short tone. When the volume is at maximum, you will be alerted with two short tones.

When reducing the volume with the volume button, there will be a short accompanying tone. When the volume is at its lowest level, you will be alerted by two short tones.



Using Your Headset

Overview of Controls During Use with Cellular Phones

| Headset Status | Multi-Function Control (MFC) | |
|----------------------|------------------------------|------------------------------|
| | <i>Press Briefly</i> | <i>Press & Hold</i> |
| Off | -- | Turn on (~6 sec.) |
| | | Enter pairing mode (~8 sec.) |
| Standby | Enter voice dial | Turn off (~2 sec.) |
| Pairing | Cancel pairing | Turn off |
| Voice Dial | Cancel voice dial | Turn off |
| Incoming Call | Accept | Reject |
| While Talking | Hang up | Turn off |



Not every cellphone will support all of the functions above. Please consult the user's manual of your phone for more information.

Using Your Headset

| Headset Status | Volume Up | | Volume Down | |
|----------------------|----------------------|-------------------------|----------------------|-------------------------|
| | <i>Press Briefly</i> | <i>Press & Hold</i> | <i>Press Briefly</i> | <i>Press & Hold</i> |
| Off | -- | -- | -- | -- |
| Standby | Volume up | -- | Volume down | -- |
| Pairing | Volume up | -- | Volume down | -- |
| Voice Dial | -- | -- | -- | -- |
| Incoming Call | -- | -- | -- | -- |
| While Talking | Volume up | -- | Volume down | -- |



Not every cellphone will support all of the functions above. Please consult the user's manual of your phone for more information.

Troubleshooting

If you have a problem with this unit, please read the troubleshooting guide below and check our website at www.cobyusa.com for Frequently Asked Questions (FAQs) and firmware updates. If these resources do not resolve the problem, please contact Technical Support.

Address **COBY Electronics Technical Support**

56-65 Rust Street
Maspeth, NY 11378

Email techsupport@cobyusa.com

Web www.cobyusa.com

Phone 800-727-3592: Weekdays 8:00AM–11:00PM EST
Weekends 9:00AM–5:30PM EST

718-416-3197: Weekdays 8:00AM–5:30PM EST

Troubleshooting

1. *There is no audio contact between the headset and another device.*

The headset and the receiving device have to be paired to recognize each other. They also have to be within range of each other. Make sure the headset and the receiving device are no more than 10m./30ft. apart with no solid objects in between.

2. *The LED indicator light on the headset is flashing red.*

This indicates that the headset battery is low and has only limited speech and standby time left. Plug the headset into the charging base and charge it for approximately 1.5 to 2 hours.

3. *No indication of charge is being shown.*

If your headset battery is empty, or has not been used for a long time, it may take several minutes for the light to indicate charging (a steady red light appears).

Troubleshooting

4. *Pairing is unsuccessful.*

If pairing has not succeeded after a few tries, you may need to reset the headset before pairing.

To reset the headset:

With the headset turned off, press and hold the multi-function control (MFC) for about 8 seconds until the LED indicator flashes red and blue, and then press and hold the MFC again until the LED indicator light turns off. The headset has now been reset.

5. *Some headset functions do not work.*

If you notice that you cannot make use of all of the features of the headset, please check if your cellular phone has the right software version.

Important Information



Please read all of the following information before using the Coby CV-M225 headset.

1. Check for any exceptions or rules due to national/local requirements or limitations concerning the use of this Bluetooth headset or any other Bluetooth device.
2. Check the laws and regulations on the use of cellular phones and hands-free equipment in the areas where you drive.
3. Please note that only authorized Coby dealers or service partners should remove and/or replace any internal components of this device.
4. Please use Coby original accessories only. Use of non-Coby original accessories may result in damage, loss of performance to the headset, injury, electric shock, or even fire.
5. Please do not expose the headset to extreme high or low temperatures, moisture, or fluid.
6. Please do not drop, throw, or bend the headset as rough treatment will damage it.
7. If the headset will not be used for a while, please store it in a place where it is dry, free from dust, and not prone to extreme temperature fluctuations.
8. RF frequency and energy may affect some electronic systems in a motor

Important Information

vehicle. Please check with the car manufacturer to ensure that the headset will not affect the electronics systems in the motor vehicle.

9. Some medical electronic equipment may not be shielded from RF energy. Therefore, please do not use the headset near medical equipment without permission.
10. Please turn off the headset before boarding any aircraft. To prevent any interference with communication systems, please do not use the headset while the plane is in the air.
11. Please turn off the headset in any area with a potentially explosive atmosphere.
12. Please do not allow children to play with the headset since it contains small parts.



The headset connects to cellular phones and other electronic devices using radio frequency signals which cannot guarantee connection under all conditions or circumstances. Therefore, please never rely solely upon the headset for essential or emergency communications.

Guide for Safe & Effective Use

Please read the following information before using the CV-M225.



Safety Instructions:

- Never put this device beside your ear. The loudness of the speaker may damage your hearing.
- Make sure the volume is suitable before using the headset. If the volume is too high, it may damage your hearing.
- Always put the device in a clean place. Do not store it in a dusty area.
- Don't expose the device to chemicals or any other liquids.
- Don't expose the device to extreme temperatures (above 95°F or below 23°F). Don't expose it to moisture.
- Don't apply excessive pressure to the device.
- Don't let any foreign matter spill into the device.
- Don't place any heavy objects on top of the device.
- Don't expose it to direct sunlight or heat sources.
- Keep it away from any liquid. Don't expose it to moisture or humidity.
- Keep it away from fire.
- Don't throw or try to flex this device.
- Don't paint the device.



Guide for Safe & Effective Use

- Don't use the device near medical equipment without permission.
- Don't use the device in places where radio equipment or wireless devices are prohibited (e.g., in an airplane).
- Don't use the device in such a place where the danger of explosion exists.
- Don't try to disassemble this device at any time. Only Coby-authorized personnel can repair it.



Personal medical equipment:

This Bluetooth product may affect the normal operation of a heart pacemaker or other embedded equipment. Please don't put the CV-M225 on top of these devices. Always put it on the side far away from the pacemaker. The interference is limited when the distance between the CV-M225 and the pacemaker is not less than 15 cm (6 inches). If you feel that interference exists, turn off the CV-M225 headset immediately. Please contact a cardiologist for details. For the influence on other medical equipment, please consult the related manufacturers.

Children:

In order to avoid injury to themselves or others, and to avoid damaging the device, do not allow children to play with this equipment or its accessories. The device or its accessories may include detachable small parts which could cause suffocation.



Guide for Safe & Effective Use

Disposal:

Don't dispose of this device as municipal waste. Please consult the local regulations regarding worn-out electronic products.



Conformity Declaration

FCC:

This device complies with Part 15 of the FCC Rules. Operation is subject to the following two conditions: (1) This device may not cause harmful interference, and; (2) This device must accept any interference received, including interference that may cause undesired operation.

RoHS:

This Coby Electronics product is fully compliant with the RoHS Directive 2002/95/EC.



WEEE:

This Coby Electronics product is fully compliant with the WEEE Directive 2002/96/EC.



Specifications

| | |
|-------------------------------|---|
| Compliance | Bluetooth v 2.0 |
| Power Class | Class 2 (-6 ~ 4dB) |
| Frequency Range | 2.4 – 2.48GHz |
| Microphone Sensitivity | < 95dB |
| Talk Time | max. 4 hours |
| Standby Time | 50 hours |
| Unit Dimensions | 0.79" x 1.38" x 0.79" |
| Unit Weight | 0.23oz |
| Compatibility | Bluetooth® headset and handsfree profiles |

Specifications and features are subject to change without prior notice.

Notes

Notes

Coby Electronics Corporation

56-65 Rust Street
Maspeth, NY 11378

www.cobyusa.com

Coby is a registered trademark of Coby Electronics Corporation.
Bluetooth is a registered trademark of Bluetooth SIG, Inc.

Printed in China.



Free Manuals Download Website

<http://myh66.com>

<http://usermanuals.us>

<http://www.somanuals.com>

<http://www.4manuals.cc>

<http://www.manual-lib.com>

<http://www.404manual.com>

<http://www.luxmanual.com>

<http://aubethermostatmanual.com>

Golf course search by state

<http://golfingnear.com>

Email search by domain

<http://emailbydomain.com>

Auto manuals search

<http://auto.somanuals.com>

TV manuals search

<http://tv.somanuals.com>