

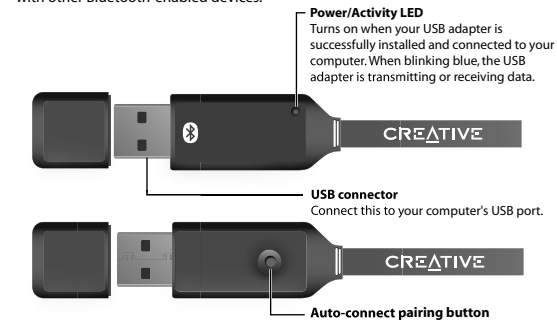
**CREATIVE**  
Wireless Adapter



**Quick Start**

**About Your Creative Wireless Adapter  
CB3200/CB3700**

Thank you for choosing the Creative Wireless Adapter CB3200/CB3700. Your USB adapter is easy to set up and supports wireless transfer rates of up to 3 Mbps\*. Your USB adapter adds Bluetooth technology to your computer and can be paired with other Bluetooth-enabled devices.



CB3700 (Black strap) - Class 1 (Wireless range up to 100m)  
 CB3200 (Silver strap) - Class 2 (Wireless range up to 10m)

\* May vary depending on actual operating environment and mode. Effective throughput of up to 2.1 Mbps.

**1 Installing Your USB Adapter**

Before you install your Creative Wireless Adapter CB3200/CB3700, take note of the Bluetooth Device Address (BDA) found on a label on your USB adapter. You need them later to verify your Bluetooth installation and pair your Bluetooth devices.

**DO NOT** connect the USB adapter to your computer before installing the software. You will be required to do so halfway through the installation.

- Turn on your computer and insert the Installation CD into your CD-ROM/DVD-ROM drive. Your CD should start automatically. If it does not, follow the steps below:
  - Double-click the **My Computer** icon. Alternatively, click **Start** → **My Computer**.
  - Right-click the **CD-ROM/DVD-ROM drive** icon, and then click **AutoPlay**.
- Follow the instructions on the screen to install the Bluetooth Software.
- When the **Bluetooth Device Not Found** dialog box appears, click the **Cancel** button.
- Click the **Finish** button.
- When prompted, restart your computer.

- Connect your USB adapter to your computer's USB port.
  - Windows 98 and 98 SE users may be prompted by an **Add New Hardware Wizard** dialog box when Microsoft® Windows® detects your USB device. Follow the instructions on the screen. You may need to insert the Windows Installation CD into the CD-ROM drive during installation. Some computers may be supplied without the Windows CD, but have the necessary files stored in `c:\windows\options\cabs` (replace `c\` with the drive letter your Windows has been installed on).

The **My Bluetooth Places** icon appears on your computer's desktop and system tray.

**For Windows XP Service Pack 2 only**

- When the **Found New Hardware Wizard** dialog box appears, select **No, not this time** and click the **Next** button.
- Select **Install from a list or specific location (Advanced)** and click the **Next** button.
- Select **Don't search. I will choose the driver to install** and click the **Next** button.
- Select **CB3200/CB3700 Creative Wireless Adapter** and click the **Next** button.
- Click the **Finish** button. Your USB adapter should appear under **Bluetooth Devices** in Device Manager.

Your computer's USB port may be located on the front panel. If your USB adapter does not fit into the USB port located on the back panel, connect it to the USB port located on the front panel.

**Product Registration**

Registering your product ensures you receive the most appropriate service and product support available. You can register your product during installation or at [www.creative.com/register](http://www.creative.com/register). Please note that your warranty rights are not dependent on registration.

**Creative Knowledge Base**

Resolve and troubleshoot technical queries at Creative's 24-hour self-help Knowledge Base. Go to [www.creative.com](http://www.creative.com), select your region and then select **Support**.

**Customer Support Services & Warranty**

You can find Customer Support Services, Warranty and other information in the Installation CD.

Customer Support Services	d:\support\<region>\<language>\support.chm
Warranty	d:\warranty\<region>\<language>\warranty.chm Please keep your Proof of Purchase for the duration of the Warranty period.
Regulatory	d:\fcc\<model>\doc.chm
User's Guide	d:\manual\<language>\manual.pdf

(replace `d\` with the drive letter of your CD-ROM/DVD-ROM drive, `<region>` with the region you are in, `<model>` with the product model, and `<language>` with the language that the document is in).

**Keep this document for future reference.**

Bluetooth is a registered trademark of the Bluetooth SIG, Inc., USA. Windows is a registered trademark of Microsoft Corporation. Information in this document is subject to change without notice and does not represent a commitment on the part of Creative Technology Ltd. No part of this document may be reproduced or transmitted in any form or by any means, electronic or mechanical, including photocopying and recording, for any purpose without the written permission of Creative Technology Ltd. The software described in this document is furnished under a license agreement and may be used or copied only in accordance with the terms of the license agreement. It is against the law to copy the software on any other medium except as specifically allowed in the license agreement. The licensee may make one copy of the software for backup purposes. Copyright © 2005 Creative Technology Ltd. All rights reserved. Version 1.0 February 2006.

P/N: 235-10263

**2 Configuring Your Bluetooth Device**

- On your taskbar, right-click the **My Bluetooth Places** icon , and select **Start Using Bluetooth**. The **Initial Bluetooth Configuration Wizard** dialog box appears.
- Follow the instructions on the screen to complete the configuration.
- When you are prompted to install another Bluetooth device, click the **Skip** button.
- Click the **Finish** button.

**3 Verifying Your Bluetooth Installation**

- On your taskbar, right-click the **Bluetooth** icon, and select **Advanced Configuration**. The **Bluetooth Configuration** dialog box appears.
- Click the **Hardware** tab. The **Bluetooth Configuration** dialog box appears.
- In the **Device Properties** box, check the device status and device address. The device should be indicated as working properly and the device address should match the BDA, found on a label on your USB adapter.

**4 Pairing Your USB Adapter to Other Bluetooth-Enabled Devices**

You need to pair your USB adapter for it to work with other Bluetooth-enabled devices.

**a. Using My Bluetooth Places Application**

To pair your USB adapter to Bluetooth-enabled devices using **My Bluetooth Places**, do the following:

- On your taskbar, double-click the **My Bluetooth Places** icon . The **My Bluetooth Places** window appears.
- Double-click the **Find Bluetooth Devices** icon.  
*For Windows XP only:* In the **Bluetooth Tasks** box, click **View devices in range**.
- In the **Entire Bluetooth Neighborhood** dialog box, double-click the Bluetooth-enabled device that you want to pair to.
- Follow the instructions on the screen.

- For more information on **My Bluetooth Places**, refer to the User's Guide (on CD).
- If prompted for a Bluetooth pin code, enter the pin code of the Bluetooth-enabled device that you are pairing your USB adapter to.

**b. Using the Auto-connect Pairing Button**

To pair your USB adapter to a Bluetooth-enabled keyboard or mouse, using the **Auto-connect pairing** button, do the following:

- These steps are for Windows XP or Windows 2000 only.
  - Make sure that your Bluetooth-enabled keyboard or mouse is in **Discoverable** mode. For more information, refer to your keyboard or mouse's User's Guide.
  - Press and hold the **Auto-connect pairing** button on your USB adapter until the **Power/Activity** LED blinks blue.
  - When the **Bluetooth Device Selection** dialog box appears on the screen, your USB adapter will detect your Bluetooth-enabled mouse or keyboard.
  - To pair to your keyboard**  
The Bluetooth Security Setup dialog box will appear once your keyboard is detected. On the **PIN Code box**, a keyboard pairing pin is displayed. Type the pin in the **PIN Code box**, and press the **<Enter>** key. The **Bluetooth** icon on the taskbar turns green.  
**To pair to your mouse**  
The **Confirmation Required** dialog box will appear once your mouse is detected. Follow the instructions and click the **Click here** button. The **Bluetooth** icon on the taskbar turns green.

## Free Manuals Download Website

<http://myh66.com>

<http://usermanuals.us>

<http://www.somanuals.com>

<http://www.4manuals.cc>

<http://www.manual-lib.com>

<http://www.404manual.com>

<http://www.luxmanual.com>

<http://aubethermostatmanual.com>

Golf course search by state

<http://golfingnear.com>

Email search by domain

<http://emailbydomain.com>

Auto manuals search

<http://auto.somanuals.com>

TV manuals search

<http://tv.somanuals.com>