



MP4213



## MP3 PLAYER User'S Manual

### ■Exit

After enter this menu, press "MODE" key to exit the main menu .

### VI. Software Installation (MP3 playerDisk Tool in disk )

It is important to correctly install the drives on your PC before connecting the MP3-Player with it. There is a Windows Installer Package on the Driver CD. If your OS system is Window 98 ,when you insert this Driver CD into your CD-ROM drive, your PC will automatically install the driver.

Disconnection with the computer.

Press the sign "Plug-and-Play" with the right key of the mouse, appears the sign "Delete the hardware safely" and the communication box appears when confirmation. Pull out the player after confirmation accordingly. Formation. Please make sure to choose the "FAT" form when formatting and then continue to use.

### VII. Upload and download from computer.

1 > After the software setup, connect the player with the computer when upload or download (use copy method) MP3/WMA files, Connect Mp3 player to PC with USB cable.  
2 > After connection OK , LCD display the sign of the connection with computer. Then the computer will automatically search the movable hard disk.

If you want to connect with PC, please connect the line with player first, then connect to PC port, if you want to disconnect the device, please Press the sign "plug-and- play" with right key of the mouse, appears the sign "Delete the hardware safely" and the communication box appears when confirmation. Pull out the player after confirmation accordingly. Disconnect PC port first then disconnect the device. Improper operation may cause program stop. Any improper operation method may cause the documents missing, and the manufacturer is not responsible for the above things.

### Warning!

Please format this unit by FAT! Don't format by FAT32. Because internal F/W takes some space, so the actual memory may be smaller than the labelled space, it is within natural range.

The device will cause no damage to the environment.

Technical Parameters

Dimension	89×33×20mm
Weight	27g
Power supply	AAA size Alkaline battery
Mp3 Bit rate	8kbps-320kbps
WMA Bit rate	5kbps-384kbps
Distortion	<0.2%
Frequency response	20Hz-20KHz
Signal noise ratio	>90db
Sound track separation	>90db
Dynamic range	>93db
Record FMT	IMADPCM/MSADPCM/ADPCM
Output power	>5mW×2

.....  
.....  
.....  
.....  
.....

## V. Menu Setting

It supports menu and various options. Press "MODE" key in stand by state to enter main menu, Switch from main menu by click **⏪** key.

■ Enter the main menu, press **⏪** key to choose "Navigation", press "MODE" key to enter "Navigation". Press Vol- key to display all the music folders and music files under root folder, press **⏪** key to choose music folder or file and press VOL+ key can enter the music folder, press "MODE" key to play the selected music file or folder. Long press "MODE" key to go back to the main menu.

### ■ Play Music

After entering this menu, press "MODE" key to select Music Mode. Press **▶** key to play music file.

### ■ Voice Mode.

After enter this menu, Press "MODE" key to select voice mode. Press **▶** key to play voice file.

### ■ Setting

#### ● EQ Set

After entering this menu, Press "MODE" key, Press **⏪** key to see the options as following: Natural, Rock, Jazz, Classic, Pop, soft, DBB and then press "MODE" key to confirm.

#### ● Play Mode

After entering this menu, press "MODE" key, then press **⏪** key to see options as: Normal, Repeat All, Repeat One, Random, Random All, Preview and then press "MODE" key again to confirm.

#### ● Contrast

After entering this menu, press "MODE" key and it display "Level" and then press **⏪** key to increase/decrease contrast of LCD. Press "MODE" key to confirm.

12

## I. Special Features:

1 > Support MP3/WMA/ADPCM playback

2 > Support Multi-language menu. 10 hours playing time, AAA battery for earphone.

3 > Built-in digital recording function, can take digital record function and can last for 520mins for 128M in ADPCM format.

4 > Dot matrix display, blue LCD back light display

5 > Seven EQ Mode: Jazz, Classic, Rock, Pop, Natural. Soft, DBB.

6 > ID3 Tags display, display lyric.

7 > Support os of Windows 98/ME/2000/XP/MAC, drive less above Win2000

8 > USB version 2.0 interface, transform various file and data from PC.

9 > Super long time play: one AAA battery use earphone listen for over 10 hours.

10 > Support DRM9 function

Warning : Download operation of WMA music with DRM protection

On Window 98/ Window ME / Windows 2000/Windows XP , WMA music with DRM should be transferred by Windows Media Player 9.0

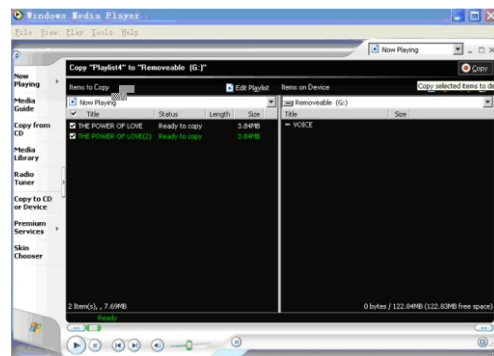
Other download operation probably will cause the player can not read the WMA music with DRM file.

Operation introduction :

On Window 98/ Window ME / Windows 2000/Windows XP , user should upgrade Windows Media Player to 9.0

1

5) In the opening windows, choose the desired WMA music with DRM. And choose "Removable Disk"

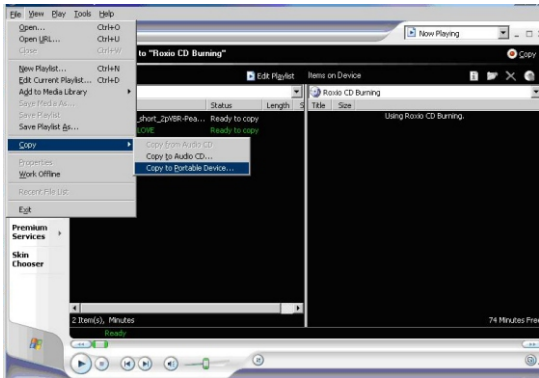


3

On Windows Media Player 9.0 version : (Window 98/ Window ME / Windows 2000/ Windows XP)

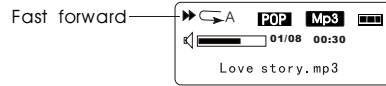
- 1) Connect MP3 player to PC
- 2) Open Windows Media Player 9.0
- 3) In Windows Media Player 9.0 , open the desired WMA music with DRM  
System maybe request to download the license in case if user does not download the WMA music with DRM properly from the website .  
In this case , user need download the license from music publisher as instruction of Microsoft Website showing in the operating window.

4) In operation windows ,click "File " "Copy" "Copy to Portable Device"



2

3).Play/Pause/Last Music/Next Music/Rewind/Fast Forward. After power on, Press key begins to play music, press again , It will pause .When in play/ pause/stop state, Press key to select last music, press key to select next music .Long press key to rewind when in play mode, Long press key to fast forward, Show as follows:



4).To adjust the volume (increase/decrease)/ segment repeat Click " + " key to increase volume in play mode, click " - " key to decrease volume. When in play mode, press "MODE" key to be in A-B segment repeat mode and set the beginning point A of the segment you want to replay, the screen will display A-, press "MODE" key again to set the ending point B, the screen will show A-B, it begins to replay segment A-B To cancel segment A-B, press "MODE" key again. A-B logo disappears, see as follows:



11

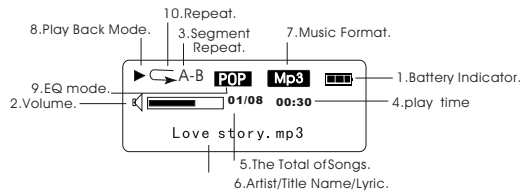


## II. Interface Brief

### 1) Appearance



## 2) Graphic LCD



- 1 > Battery Indicator.
- 2 > Volume.
- 3 > Segment Repeat.
- 4 > play time
- 5 > The Total of Songs.
- 6 > Artist/Title Name/Lyric.
- 7 > Music Format.
- 8 > PlayBack Mode.
- 9 > EQmode.
- 10> Repeat.

6

## III. Function menu

1>Main menu

Power on and enter settingstate, Press "MODE" key to enter the Main menu:

- Navigation
- Play Music
- Voice
- Setting
- Record
- Delete
- About
- Exit

7

## Free Manuals Download Website

<http://myh66.com>

<http://usermanuals.us>

<http://www.somanuals.com>

<http://www.4manuals.cc>

<http://www.manual-lib.com>

<http://www.404manual.com>

<http://www.luxmanual.com>

<http://aubethermostatmanual.com>

Golf course search by state

<http://golfingnear.com>

Email search by domain

<http://emailbydomain.com>

Auto manuals search

<http://auto.somanuals.com>

TV manuals search

<http://tv.somanuals.com>