



LUMINA MATRIX™

SKU# LUM013

The new Lumina Matrix™ features (16) 7W Warm White (2,700K) <80 CRI LEDs packaged in perfectly aligned halogen looking reflectors, 15° beam producing a smooth wash or blinder effect, electronic 16bit dimming (0-100%), variable dimming curves, individual pixel control (1-16), chase macros with variable speed and fade control, flicker free operation for TV and FILM, side by side vertical and horizontal array rigging, multiple unit power linking, 150W max power consumption, remote device management protocol support, and a multi-voltage universal auto switching power supply (120-240v).

FEATURES

- (16) 7W Warm White (2,700K) <80 CRI LEDs**
- Perfectly Aligned Halogen Looking Reflectors**
- 15° Beam Producing a Smooth Wash or Blinder Effect**
- Electronic 16bit Dimming (0-100%) + Variable Curves**
- Individual Pixel Control (1-16)**
- Chase Macros with Variable Speed and Fade Control**
- Flicker Free Operation for TV and FILM**
- Side By Side Vertical and Horizontal Array Rigging**
- Multiple Unit Power Linking**
- 150W Max Power Consumption**
- Remote Device Management Protocol Support**



ELATION | LUMINA MATRIX™ | Product Specification Sheet

Specifications are subject to change without notice ©Elation Professional

Elation Professional USA | 6122 S. Eastern Ave. | Los Angeles, CA. 90040
323-582-3322 | 323-832-9142 fax | www.elationlighting.com | info@elationlighting.com

Elation Professional B.V. | Junostraat 2 | 6468 EW Kerkrade, Netherlands
+31 45 546 85 66 | +31 45 546 85 96 fax | www.elationlighting.eu | info@elationlighting.eu

PRODUCT SPECIFICATIONS

FEATURES

15° Beam Producing a Smooth Wash or Blinder Effect
 Electronic 16bit Dimming (0-100%)
 Variable Dimming Curves
 Individual Pixel Control (1-16)
 Flicker Free Operation for TV and FILM
 Side By Side Vertical and Horizontal Array Rigging
 Multiple Unit Power Linking
 Remote Device Management Protocol Support

SOURCE

(16) 7W Warm White (2,700K) <80CRI LEDs

PHOTOMETRIC DATA

Pending

EFFECTS

Electronic 16bit Dimming: 0% - 100%
 Variable Dimming Curves
 (Stage, TV, Architectural, Theatre)
 Chase Macros with Variable Speed and Fade Control

CONTROL / CONNECTIONS

(6) DMX Channel Modes (7 / 8 / 10 / 14/ 16 / 22)
 Remote Device Management Protocol Support
 (4) Button Control Panel
 LCD Menu Display
 5pin DMX In/Out
 powerCON In/Out

SIZE / WEIGHT

Length: 15.7" (400mm)
 Width: 3.1" (78.5mm)
 Vertical Height: 15.7" (400mm)
 Weight: 21.1 lbs. (9.8 kg)

ELECTRICAL / THERMAL

AC 100-240V - 50/60Hz
 150W Max Power Consumption
 Multiple Unit Power Linking:
 MAX 12pcs (AC100-120V) or MAX 21 pcs (220-240V)

APPROVALS / RATINGS

CE Approved
 IP20 Rated

INSTALLATION

Rigging: Side By Side Vertical and Horizontal Arrays
 Working Position: Any (360°)

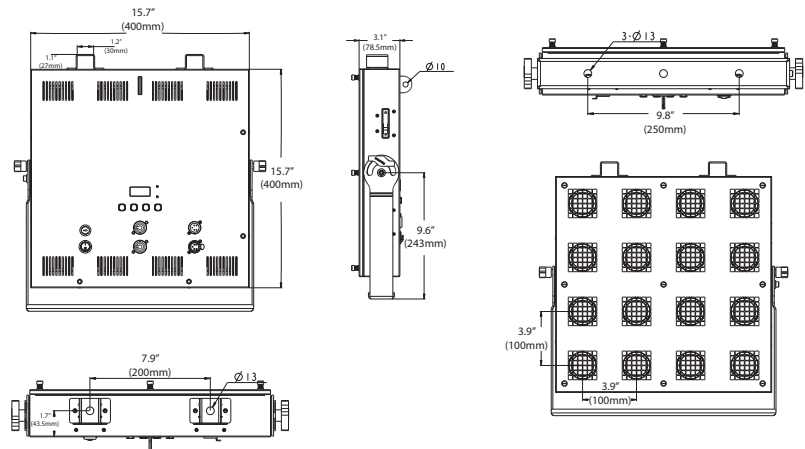
INCLUDED ITEMS

(1) powerCON Cable

PHOTOMETRIC DATA

Pending

DIMENSIONAL DIAGRAM



OPTIONAL ACCESSORIES

ORDER CODE	ITEM
TRIGGER CLAMP	Heavy Duty Wrap Around Hook Style Clamp
AC5PDMX5PRO	5 ft. (1.5m) 5pin PRO DMX Cable
AC5PDMX10PRO	10 ft. (3m) 5pin PRO DMX Cable
AC5PDMX15PRO	15 ft. (4.5m) 5pin PRO DMX Cable
AC5PDMX25PRO	25 ft. (7.5m) 5pin PRO DMX Cable
AC5PDMX50PRO	50 ft. (15m) 5pin PRO DMX Cable
AC5PDMX100PRO	100 ft. (30m) 5pin PRO DMX Cable
PLC3	3' (1m) PowerCON PRO Link Cable
PLC6	6' (1.8m) PowerCON PRO Link Cable
PLC10	10' (3m) PowerCON PRO Link Cable
PLC15	15' (4.5m) PowerCON PRO Link Cable



Specifications are subject to change without notice ©Elation Professional

Elation Professional USA | 6122 S. Eastern Ave. | Los Angeles, CA. 90040
 323-582-3322 | 323-832-9142 fax | www.elationlighting.com | info@elationlighting.com

Elation Professional B.V. | Junostraat 2 | 6468 EW Kerkrade, Netherlands
 +31 45 546 85 66 | +31 45 546 85 96 fax | www.elationlighting.eu | info@elationlighting.eu

Free Manuals Download Website

<http://myh66.com>

<http://usermanuals.us>

<http://www.somanuals.com>

<http://www.4manuals.cc>

<http://www.manual-lib.com>

<http://www.404manual.com>

<http://www.luxmanual.com>

<http://aubethermostatmanual.com>

Golf course search by state

<http://golfingnear.com>

Email search by domain

<http://emailbydomain.com>

Auto manuals search

<http://auto.somanuals.com>

TV manuals search

<http://tv.somanuals.com>