

## Installation instructions and User guide

### Designer series island canopy

HI120DXB1, HI120DMB1 models

NZ AU GB IE

# Contents

Safety and warnings	1
Installation instructions	2
Getting started quickly	5
Cleaning and maintenance	6
Manufacturer's warranty	7
Customer care	8

## ***Important!***

### **SAVE THESE INSTRUCTIONS**

*The models shown in this User Guide may not be available in all markets and are subject to change at any time. For current details about model and specification availability in your country, please visit our local website listed on the back cover or contact your local Fisher & Paykel dealer.*

## Important!

- Please read the entire set of instructions before installing the island canopy.
- This island canopy is not intended for use by young children or infirm persons without supervision.
- Young children should be supervised to ensure that they do not play with the island canopy.
- There must be adequate ventilation of the room when the island canopy is used at the same time as appliances burning gas or other fuels. (A partial vacuum in the room could result in too high a concentration of gas in the air).
- You must read the details concerning the method and frequency of cleaning.
- There is a fire risk if cleaning is not carried out in accordance with the instructions.
- Do not flambé under the island canopy.
- Exhaust air must not be discharged into an existing flue that is used for exhausting fumes from appliances burning gas or other fuels.
- The minimum distance between the cooktop surface and the filters of the island canopy shall be 600 mm, or 650 mm if installed over a gas cooktop.
- Attention should be given to ensure that any applicable regulations concerning the discharge of exhaust air is fulfilled.
- If the supply cord of this equipment is damaged it must only be replaced by the manufacturer, its service agent or similarly qualified person in order to avoid a hazard.
- Always switch the power off prior to installation, servicing or cleaning the island canopy.
- Never use the island canopy without the filters in place.
- Stainless steel is very easily damaged during installation if abraded or knocked by tools. It is recommended to protect the top of the canopy with cardboard or polystyrene during the installation to minimise the risk of damage occurring.
- A power outlet should be within 750 mm of the motor assembly and can be either on the wall, behind the chimney or in the ceiling.
- To comply with electrical safety regulations, this canopy must be plugged into a socket near the appliance. The socket must be accessible, or have an accessible isolating switch, to enable the end user to isolate the canopy from the power for the purpose of internal cleaning or maintenance.
- Ducting accessories are not supplied. All ducting must comply with local requirements and building codes.

## **WARNING!**



### **Electrical Shock Hazard**

All electrical work must be done in accordance with local and/or national electrical codes as applicable. For safety, this product must be earthed. If you are unfamiliar with methods of installing electrical wiring, employ the services of a qualified electrician. Turn off power at service entrance before installing wiring or servicing this product.

## **WARNING!**



**43.2 kg**

### **Weight Hazard**

The island canopy is heavy. Please ensure adequate care is taken when installing the island canopy to prevent personal injury. The island canopy must be installed onto a solid wall, stud, beam or truss. Weight of the product is 43.2 kg.

## 2 Installation instructions

Thank you for purchasing a quality Fisher & Paykel island canopy. Each island canopy is tested and approved before it leaves the factory, ensuring our high standard of quality control is met.

### Contents of packaging

- 1 x island canopy
- 2 x chimney pieces
- 8 x angle brackets
- 1 x installation instructions
- 4 x aluminium mesh filters
- 4 x 12 x 40 mm screw
- 30 x 6 x 1/4" self tapping screw (2 spare)

### Typical equipment required:

- Electric drill
- Screwdriver
- Duct tape
- Jig saw
- Ladder
- Ducting
- Tape measure
- Drill bits
- Spirit level

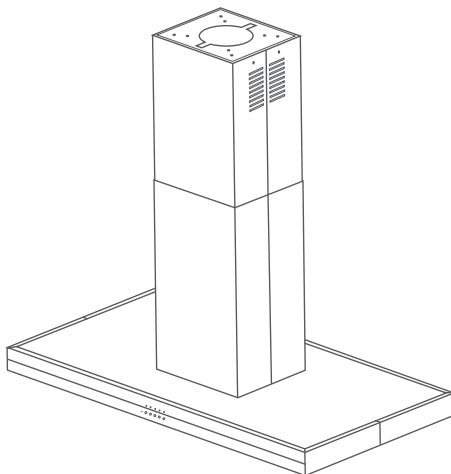


Fig.1 Designer island canopy

### Accessories

Accessory	Part Number
Chimney ext 3048 mm (10') ceiling SS	89094
Chimney ext 3048 mm (10') IR	89095
Recirculation kit	RR1744
Replacement charcoal filter	R104165
Light bulb	R104467
Replacement aluminium filter	R104660

## Height of island canopy

- The island canopy is designed for 2440 mm high ceilings.
- The chimney is telescopic and is designed for hood installations between 600 to 750 mm above the cooking surface.
- Ascertain the desired installation height of the island canopy.
- Any installation above 750 mm will compromise the extraction performance.
- The air outlet from the motor requires 150 mm round ducting which requires a 160 mm (min) diameter hole in the ceiling.

A = 600 min (electric cook top)

A = 650 min (gas cook top)

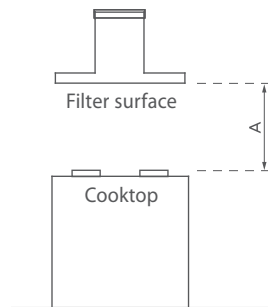


Fig.2 Positioning

## Ducting options

### Recirculation

For recirculation, please purchase a recirculation kit (part no. RR1744). The recirculation kit is required to channel the air out through the side-vents at the top of the flue.

Note: a ducting hole is not required to be cut in the ceiling if a recirculation kit is fitted.

### Ducting

For ducted installation, it is recommended that you use 150 mm diameter, rigid or semi-rigid ducting. This will require a 160 mm (min) round hole in the ceiling, which the decorative chimney will cover. Care should be taken to align the canopy with the decorative chimney allowing sufficient clearance to accommodate the ducting.

For optimum efficiency, use smooth-wall, solid galvanized or plastic ducting for reduced noise and increased airflow. Flexible ducting should only be used as a last resort (ie in difficult installations) and if used, ensure that it is pulled tight.

The smoother, straighter and shorter the ducting the quieter and more efficient the wall canopy will perform.

All ducting must comply with local requirements and building codes.

Note: we recommend an Easy Fit by Fisher & Paykel or a UNIDUCT ducting system, products that have been designed to expel air efficiently.

## Preparing the island canopy for installation

- Before drilling any holes check that the area behind the surface to be drilled is clear of any electrical cables, pipes etc.
- Fixing to a solid joist or 50 mm deep truss is recommended.
- Whenever possible protect the cooktop with cardboard or the like to prevent damage on installation.

## 4 Installation instructions

### **Important!**

*An additional person will be required for Step 11 of this operation, or, a simple support frame made to the correct dimensions will aid assembly of the island canopy.*

- 1 Before commencement, unpack the island canopy and check that it functions correctly.
- 2 Use a plumb line to mark the centre of the cooking surface on the ceiling.
- 3 Using the ceiling bracket as a template (Fig.3), mark the four holes on the ceiling. Ensure that the ceiling bracket front edge is parallel with the bench top and that the plumb line mark is central to the four mounting screw holes.
- 4 Drill holes in the ceiling at the points marked.
  - a When fitting to a 50 mm truss, drill a pilot hole through the ceiling and into the truss.
  - b If securing to any other ceiling type, please use appropriate fasteners and follow their instructions of use carefully.
- 5 For the ducting, mark out and cut a  $\text{Ø}160$  mm (min) hole in the ceiling.
- 6 Fix the ceiling bracket to the ceiling using the screws supplied.
- 7 Using duct tape, secure the ducting to the top of the motor housing. Tape the power plug to the top of the ducting, this will enable easy access to the plug after installation.
- 8 Mount a set of four angle brackets to the canopy. Use eight self tapping screws, one per side, and one per corner.
- 9 Determine the installed height of the canopy and attach the second set of four angle brackets to the first to achieve this height. Secure with eight self tapping screws, one per side per corner.

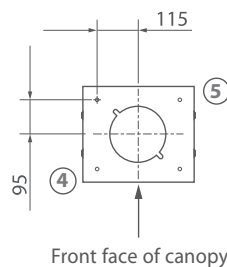


Fig.3 Ceiling bracket as template

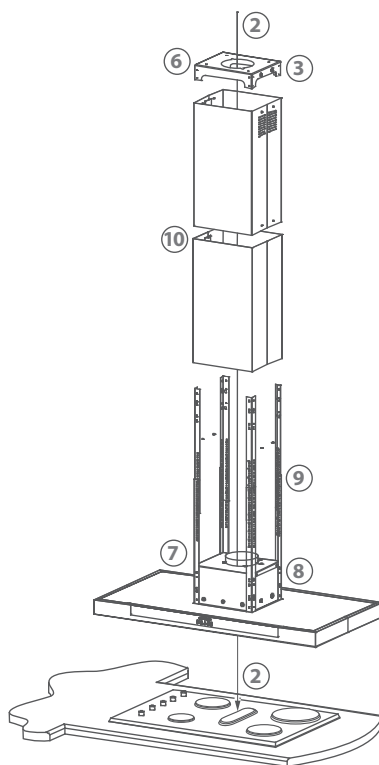


Fig.4 Plan view of support frame

- 10 Strip the plastic protective film off the two chimney pieces and place these over the corners.  
Note: Fisher & Paykel logo to go to the front of the product. The lower chimney will rest on top of the canopy hood and the upper chimney will be extended and secured to the ceiling bracket. To ensure that the upper chimney does not slip inside the lower chimney, secure it so that the upper chimney is showing. Duct tape or placing two screws/nails through the upper chimney securing holes will do this.
- 11 Offer the island canopy, angle brackets, chimneys and ducting up to the ceiling bracket and secure in place with eight screws provided, one per side per corner. The dimension between the filters and the cooking surface should be in line with those suggested in the 'Height of island canopy' section. An additional person will be required for this operation or a simple support frame manufactured to the correct dimensions will aid assembly of the island canopy.
- 12 Finish assembling the ducting, ensuring the path is as short, straight and smooth as possible.
- 13 Connect to the supply and switch on the power using switch/socket outside the island canopy.
- 14 Slide the upper chimney piece up to the ceiling and secure in place with four screws supplied.

## Getting started quickly

### Control panel



*Fig.5 Control panel*

**DELAY OFF SWITCH:** Enables the island canopy to remain on a low, mid or high speed for five minutes, to clear away all residual cooking odours before switching off automatically.

## 6 Cleaning and maintenance

### **Caution!**

*Never use abrasive or oil based liquid cleaners.*

### **General maintenance**

The manufacturer is not liable for any damage caused by not following these instructions.

The island canopy should be cleaned regularly using warm water with soap or mild liquid detergents. This ensures that no build-up of grease occurs as these deposits are corrosive. Do not use abrasives or harsh detergents/cleaning fluids.

Note: in areas of high humidity and coastal environments cleaning should be carried out frequently.

### **Aluminium filters**

The grease filters must be periodically cleaned (at least every two months).

Remove the grease filters and wash them either by hand using hot soapy water or place them in the dishwasher using mild detergent. Badly smoked filters may be cleaned with "cookware cleaners".

Note: some discolouration of the frame may occur.

### **Charcoal filters**

Charcoal filters are designed to remove grease and odours from cooking vapours, prior to the cleansed air re-entering the kitchen (when the island canopy is in recirculating mode). Charcoal filters are disposable items and it is recommended that these should be replaced every three to six months depending on use.

Note:

- Fully saturated charcoal filters can become a barrier to air movement, impeding the island canopy's performance.
- In the event of fire, fully grease laden filters could be flammable and therefore regular replacement is recommended.
- In ducted installations, conventional aluminium filters are recommended.

For replacement charcoal filters, ducting accessories, spare parts and service, please contact your local supplier or Fisher & Paykel Customer Care Centre.

### **Light bulb replacement**

(Halogen bulb 12 Volts/20 Watt)

- 1 Switch off the power to the island canopy.
- 2 Use a small bladed screwdriver to prise off the light cover, taking care not to damage the surrounding material.
- 3 Remove the defective bulb from the canopy hood.
- 4 Replace with a new bulb using a cloth. Do not touch the bulb with fingers as this will shorten the life of the bulb.
- 5 Snap the cover back into place.

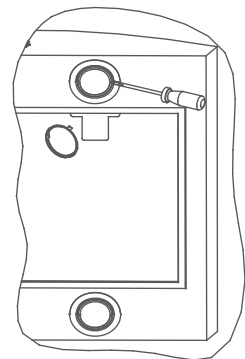


Fig.6 Replacing a light bulb



You automatically receive a 2 year Manufacturer's Warranty with the purchase of this Product covering parts and labour for servicing within the country of purchase.

## **Fisher & Paykel undertakes to:**

Repair or, at its option, replace without cost to the owner either for material or labour any part of the Product, the serial number of which appears on the Product, which is found to be defective within TWO YEARS from the date of purchase.

## **This warranty DOES NOT cover**

- A** Service calls which are not related to any defect in the Product. The cost of a service call will be charged if the problem is not found to be a Product related fault. For example:
  1. Correcting the installation of the Product.
  2. Instructing you how to use the Product.
  3. Replacing house fuses or correcting house wiring.
  4. Correcting fault(s) caused by the user.
  5. Noise or vibration that is considered normal, eg. fan sounds, refrigeration noises or user warning beeps.
  6. Correcting damage caused by pests, eg. rats, cockroaches etc.
- B** Defects caused by factors other than:
  1. Normal domestic use or
  2. Use in accordance with the Product's User Guide.
- C** Defects to the Product caused by accident, neglect, misuse or 'Act of God'.
- D** The cost of repairs carried out by non-authorized repairers or the cost of correcting such unauthorised repairs.
- E** Normal recommended maintenance as set out in the Product's User Guide.
- F** Repairs when the appliance has been dismantled, repaired or serviced by other than a Fisher & Paykel AUTHORISED CUSTOMER SERVICE CENTRE or the selling dealer.
- G** Pick up and delivery.
- H** Transportation or travelling costs involved in the repair when the Product is installed outside the Fisher & Paykel AUTHORISED CUSTOMER SERVICE CENTRE'S normal service area.

This Product has been designed for use in a normal domestic environment. It is not intended for commercial use. Doing so may affect Product warranty.

Service under this manufacturer's warranty must be provided by an Authorised Service Agent (refer to the Customer care section for contact details). Such service shall be provided during normal business hours. This warranty certificate should be shown when making any claim.

### **Note:**

This Warranty is an extra benefit and does not affect your legal rights.

**Please keep this User Guide in a safe place.**

Check the things you can do yourself.  
Refer to your User Guide and check:

- 1 Your appliance is correctly installed.
- 2 You are familiar with its normal operation.



If after checking these points you still need assistance, please refer to your nearest AUTHORISED SERVICE CENTRE, or contact us through our local website listed on the back cover.

### **In New Zealand if you need assistance...\***

Call your Fisher & Paykel retailer who is trained to provide information on your appliance, or if we can be of any further help, please contact our Customer Care Centre,

**Toll Free:** 0800 FP CARE or 0800 37 22 73      **Fax:** (09) 273 0656

**Email:** [customer.care@fp.co.nz](mailto:customer.care@fp.co.nz)

**Postal address:** P.O. Box 58732, Greenmount, Auckland

### **If you need service...\***

Fisher & Paykel has a network of independent Fisher & Paykel Authorised Service Centres whose fully trained technicians can carry out any service necessary on your appliance. Your dealer or our Customer Care Centre can recommend an Authorised Service Centre in your area.

### **In Australia if you need assistance...\***

Call the Fisher & Paykel Customer Care Centre and talk to one of our Customer Care Consultants.

**Toll Free:** 13 00 650 590      **Fax:** (07) 3826 9298

**Email:** [customer.care@fp.com.au](mailto:customer.care@fp.com.au)

**Postal Address:** PO Box 798, Cleveland QLD 4163

### **If you need service...\***

Fisher & Paykel Australia Pty Ltd has a network of independent Fisher & Paykel Authorised Service Centres whose fully trained technicians can carry out any service necessary on your appliance. Our Customer Care Centre can recommend an Authorised Service Centre in your area.

### **In United Kingdom if you need assistance...\***

**Phone:** (0845) 066 2200

**Fax:** (0845) 331 2360

**Email:** [customer.care@fisherpaykel.co.uk](mailto:customer.care@fisherpaykel.co.uk)

**Postal Address:** Fisher & Paykel Appliances Limited, Maidstone Road, Kingstons, Milton Keynes, Buckinghamshire, MK10 0BD

### **In Ireland if you need assistance...\***

**Phone:** 01800 625 174

**Fax:** 01800 635 012

**Email:** [customer.care@fisherpaykel.ie](mailto:customer.care@fisherpaykel.ie)

**Postal Address:** Fisher & Paykel Appliances (Irl) Ltd, Unit D2, North Dublin Corporate Park, Swords, Co Dublin

\*If you call or write, please provide: name, address, model number, serial number, date of purchase and a description of the problem. This information is needed in order to better respond to your request for assistance.

**Product Details**

Fisher & Paykel Appliances Ltd

**Model/Serial No.**

**Date of Purchase** \_\_\_\_\_ **Purchaser** \_\_\_\_\_

**Dealer** \_\_\_\_\_ **Suburb** \_\_\_\_\_

**Town** \_\_\_\_\_ **Country** \_\_\_\_\_

Copyright © Fisher & Paykel 2009. All rights reserved.  
The product specifications in this booklet apply to the specific products and models described at the date of issue. Under our policy of continuous product improvement, these specifications may change at any time. You should therefore check with your Dealer to ensure this booklet correctly describes the product currently available.

**[www.fisherpaykel.co.nz](http://www.fisherpaykel.co.nz)**  
**[www.fp.com.au](http://www.fp.com.au)**  
**[www.fisherpaykel.co.uk](http://www.fisherpaykel.co.uk)**  
**[www.fisherpaykel.ie](http://www.fisherpaykel.ie)**

NZ AU GB IE  
Designer series island canopy  
Installation instructions and user guide  
Published: 02/2009  
**Part No. 400006 E**

## Free Manuals Download Website

<http://myh66.com>

<http://usermanuals.us>

<http://www.somanuals.com>

<http://www.4manuals.cc>

<http://www.manual-lib.com>

<http://www.404manual.com>

<http://www.luxmanual.com>

<http://aubethermostatmanual.com>

Golf course search by state

<http://golfingnear.com>

Email search by domain

<http://emailbydomain.com>

Auto manuals search

<http://auto.somanuals.com>

TV manuals search

<http://tv.somanuals.com>